



Louvered Hanging Systems

CUSTOMIZABLE VERTICAL STORAGE FOR HANGING BINS



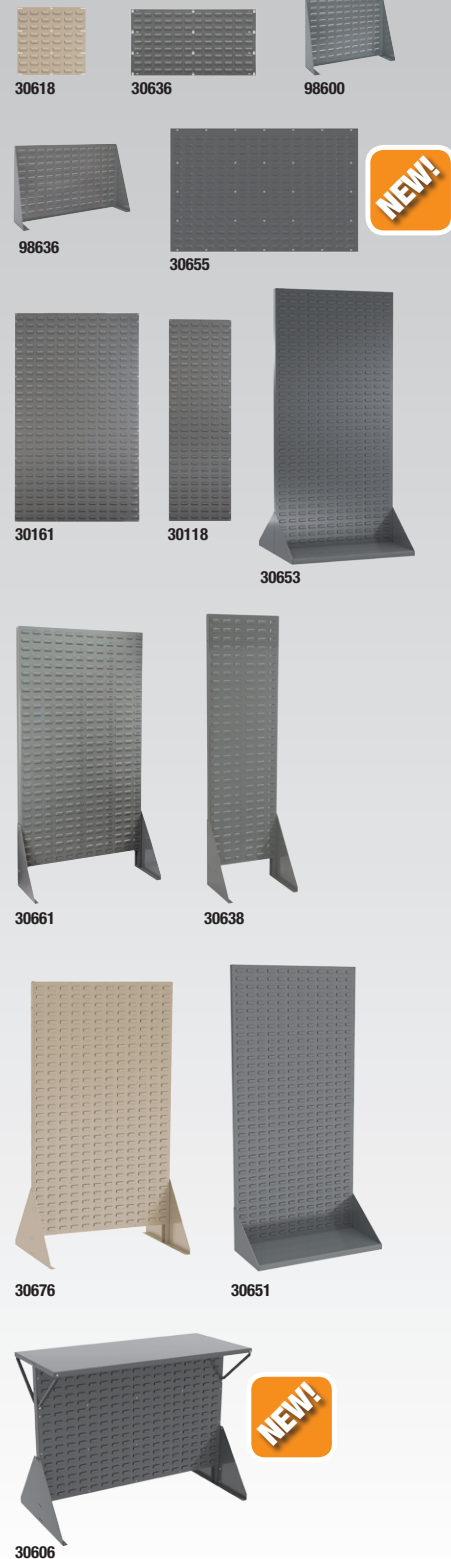
FEATURES

- 1 Louvered Panels securely support AkroBins® and InSight® Bins (sold separately, see Pgs. 4, 9)
- 2 Heavy-duty 16-gauge, cold-rolled steel for strength and durability
- 3 Attractive, durable powder-coated finish
- 4 Save installation time with Rivet Racks! Models 30661, 30638 and 30676 are full louvered panels mounted to a convenient heavy-duty frame



PRODUCT HIGHLIGHTS

- **EFFICIENT** – Wall-mounted units keep items out of the way, off the floor and off the work table
- **BENCH RACKS** – Used on work tables to keep parts within easy reach
- **FLOOR RACKS** – Can be placed near work areas to improve productivity
- **SINGLE-SIDED RACKS** – Can be placed against a wall to save floor space
- **DOUBLE-SIDED RACKS** – Expand storage options
- **MOBILE KIT** – Available to mobilize two-sided racks



COLORS
Gray, Beige

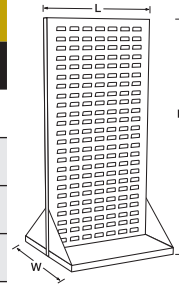


AkroBin Louvered Hanging Systems			Dimensions (In.)				Rack Wt. Cap. (lbs.)	AkroBin quantity to fit Louvered Hanging System – AkroBins Model No. (Bin Weight Capacity)									
Model No.	Description	Ctn. Qty	L	W	H	30210 (10 lbs.)		30220 (10 lbs.)	30224 (30 lbs.)	30230 (30 lbs.)	30234 (50 lbs.)	30235 (60 lbs.)	30239 (50 lbs.)	30240 (60 lbs.)	30250 (75 lbs.)	30255 (60 lbs.)	30320 (80 lbs.)
30618*	Louvered Panel	4	18	5/8	19	160	16	16	12	9	9	3	4	4	2	3	–
30636*	Louvered Panel	4	35 3/4	5/8	19	160	32	32	24	18	18	9	8	8	4	6	3
	2 Louvered Panels		35 3/4	5/8	37	–	72	72	36	36	36	18	16	16	8	12	5
	3 Louvered Panels		35 3/4	5/8	55	–	104	104	54	54	54	27	28	28	14	18	8
	4 Louvered Panels		35 3/4	5/8	73	–	144	144	72	72	72	36	36	36	18	24	11
30655	Louvered Panel	1	52	5/8	34 1/2	750	96	96	60	45	45	20	24	24	12	15	5
98600*	Bench Rack	1	27 1/2	8 3/8	19 1/2	120	30	30	18	12	12	6	6	6	–	–	–
98636	Bench Rack	1	36	8	20	120	40	40	24	18	18	9	8	8	4	6	3
30161*	Louvered Panel	1	36	5/8	61	1000	120	120	80	60	60	30	28	28	14	20	10
30118	Louvered Panel	1	18	5/8	61	500	48	48	36	30	30	14	12	12	6	9	–
30653	Heavy-Duty Double-Sided Floor Rack	1	35 3/4	32	75 1/2	2000	288	288	192	144	144	72	72	72	36	48	–
30661*	Single-Sided Rivet Floor Rack	1	36 1/2	13 1/2	66 1/2	500	120	120	80	60	60	30	28	28	14	20	10
30638	Single-Sided Rivet Floor Rack	1	18	13 1/2	66 1/2	250	48	48	36	30	30	14	12	12	6	9	–
30676*	Double-Sided Rivet Floor Rack	1	36 1/2	25	66 1/2	1000	240	240	144	108	108	56	48	48	24	36	20
30651	Heavy-Duty Single-Sided Floor Rack	1	35 3/4	17	75 1/2	1000	144	144	98	72	72	36	36	36	18	24	11
30653DOLLY	Mobile Kit for 30653	1	–	–	–	500	–	–	–	–	–	–	–	–	–	–	–
LVDMOBILE	Mobile Kit for 30676	1	–	–	–	1500	–	–	–	–	–	–	–	–	–	–	–

*Also available in Beige.

Low Profile Floor Rack – Single-Sided		Rack Dimensions (In.)			Bin Model No.	Bin Dimensions (In.)			Bin Qty.	Wt. Capacity (Lbs.)	Panel/Top	Colors
Model No.	Description	W	H	D		L	W	H				
30650GY	Low Profile Floor Rack	52 1/2	40	13 1/2	–	–	–	–	–	500/250	–	
30650GY240	Low Profile Floor Rack	52 1/2	40	13 1/2	30240	14 3/4	8 1/4	7	24	500/250	B, R, Y, SC	
30650GY250	Low Profile Floor Rack	52 1/2	40	13 1/2	30250	14 3/4	16 1/2	7	12	500/250	B, R, Y, SC	
30650GYASST	Low Profile Floor Rack	52 1/2	40	13 1/2	30240 / 30250	See Above	–	–	12/6	500/250	B, R, Y, SC	
30656GY	Low Profile Floor Rack no Shelf	52 1/2	39 1/2	13 1/2	–	–	–	–	–	500	B, R, Y, SC	
30656GY240	Low Profile Floor Rack no Shelf	52 1/2	39 1/2	13 1/2	30240	14 3/4	8 1/4	7	24	500	B, R, Y, SC	
30656GY250	Low Profile Floor Rack no Shelf	52 1/2	39 1/2	13 1/2	30250	14 3/4	16 1/2	7	12	500	B, R, Y, SC	
30656GYASST	Low Profile Floor Rack no Shelf	52 1/2	39 1/2	13 1/2	30240 / 30250	See Above	–	–	12/6	500	B, R, Y, SC	

Specify color of bins when ordering. B=Blue, R=Red, Y=Yellow, SC=Clear.



InSight Louvered Panel Systems		
Model No.	Description	Bin Qty.
30636BEIGE A1	35 3/4" x 19" Louvered Panel with 305A1	32
30636BEIGE A3	35 3/4" x 19" Louvered Panel with 305A3	32
30636BEIGE A5	35 3/4" x 19" Louvered Panel with 305A5	32
30636BEIGE B1	35 3/4" x 19" Louvered Panel with 305B1	18

InSight Louvered Panel and Bin Combinations		Bin Qty.			
Model No.		305A1	305A3	305A5	305B1
30618BEIGE		16	16	16	9
98600BEIGE		30	30	30	12

Bins sold separately.

Low Profile Floor Rack – Double-Sided		Rack Dimensions (In.)			Bin Model No.	Bin Dimensions (In.)			Bin Qty.	Wt. Capacity (Lbs.)	Panel/Top	Colors
Model No.	Description	W	H	D		L	W	H				
30606GY	Low Profile Floor Rack	52 1/2	40	27	–	–	–	–	–	500 per side/250	–	
30606GY240	Low Profile Floor Rack	52 1/2	40	27	30240	14 3/4	8 1/4	7	48	500 per side/250	B, R, Y, SC	
30606GY250	Low Profile Floor Rack	52 1/2	40	27	30250	14 3/4	16 1/2	7	24	500 per side/250	B, R, Y, SC	
30606GYASST	Low Profile Floor Rack	52 1/2	40	27	30240 / 30250	See Above	–	–	24/12	500 per side/250	B, R, Y, SC	
30607GY	Low Profile Floor Rack no Shelf	52 1/2	39 1/2	27	–	–	–	–	–	500	B, R, Y, SC	
30607GY240	Low Profile Floor Rack no Shelf	52 1/2	39 1/2	27	30240	14 3/4	8 1/4	7	48	500	B, R, Y, SC	
30607GY250	Low Profile Floor Rack no Shelf	52 1/2	39 1/2	27	30250	14 3/4	16 1/2	7	24	500	B, R, Y, SC	
30607GYASST	Low Profile Floor Rack no Shelf	52 1/2	39 1/2	27	30240 / 30250	See Above	–	–	24/12	500	B, R, Y, SC	

Specify color of bins when ordering. B=Blue, R=Red, Y=Yellow, SC=Clear.

LOW-PROFILE LOUVERED FLOOR RACK



30650GYASST
Available with or without top shelf;
single- or double-sided.



Lean Panel™ : Lean Floor Rack

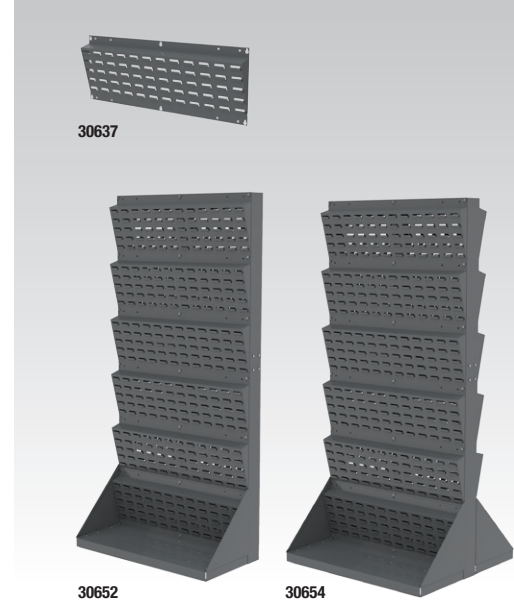
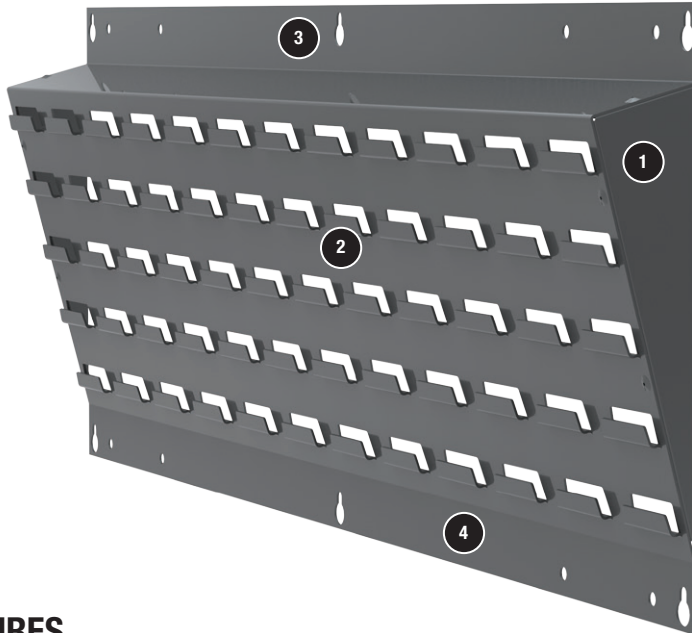
15° LOUVERED HANGING SYSTEM



800.253.2467
akro-mils.com



NEW!



COLOR
Gray



FEATURES

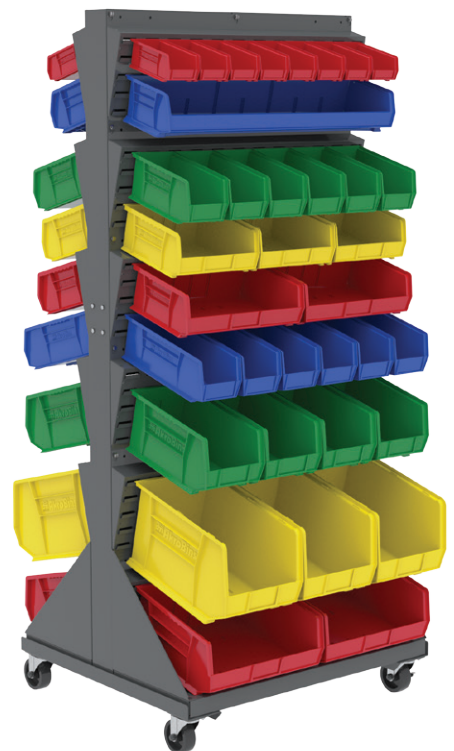
- 1 Keeps hanging bins at an ergonomic 15-degree angle for easier visibility and more comfortable picking
- 2 Louvers allow for easy placement of AkroBins®, InSight® Bins, or ProHANGER®
- 3 Individual panels can be wall mounted or used with floor standing racks
- 4 Durable powder-coated finish on heavy-duty 16-gauge steel



Lean
panel by Akro-Mils

Lean Panel & Lean Panel Floor Rack		Dimensions (In.)			
Model No.	Description	L	W	H	Weight Capacity
30637A	Lean Panel – 1 PACK	35½	2½	13¼	90 lbs.
30637	Lean Panel – 3 PACK	35½	2½	13¼	90 lbs. ea.
30652	Single-Sided Floor Rack	35¾	17	75¾	500 lbs.
30654	Double-Sided Floor Rack	35¾	32	75¾	1000 lbs.
30653DOLLY	Mobile Kit for Floor Rack	–	–	–	500 lbs.

AkroBin Quantities for Lean Panel & Lean Panel Floor Rack									
Model No.	30210, 30220	30224	30230, 30234	30239, 30240, 30265	30235	30260	30255	30250, 30270	30320
30637A	24	16	12	4	6	3	4	2	2
30652	144	96	72	24	36	18	24	12	12
30654	288	192	144	48	72	36	48	24	24



30654 with 30653DOLLY
(Bins sold separately)



ReadySpace® Storage System

BIN HANGING SYSTEMS FOR MEDICAL & HEALTHCARE

800.253.2467
akro-mils.com

BIN HANGING
SYSTEMS & RACKS

Ready, Set, Organize!®

PRODUCT HIGHLIGHTS

- **FUNCTIONAL** – Wall, Bench or Mobile Floor Units free up valuable workspace!
- **CLEAN** – Durable white powder-coated finish creates a neat, attractive storage space in any healthcare and medical environment
- **MOBILE UNIT** – Casters come standard with the Mobile Floor Unit
- **WALL UNIT** – Ships complete with its own mounting bracket for easy installation
- **BENCH UNIT** – 2-piece base allows for assembly as a single- or double-sided unit
- **VARIETY** – Preconfigured packages with Stone AkroBins® are available, or create your own system using AkroBins and InSight® Bins!

ReadySpace Wall Unit Packages		Capacity/Qty.		
Model No.	Description (L x W x H)	No. of Ctns.	Wt. Cap. (lbs.)	Bin Qty.
30536	37½" x 13¼" x 25¾" Panel	1	50	N/A
30536210S	Unit with 30210STONE Bins	3	50	48
30536220S	Unit with 30220STONE Bins	3	50	48
30536230S	Unit with 30230STONE Bins	3	50	24
30536235S	Unit with 30235STONE Bins	3	50	12
30536320S	Unit with 30320STONE Bins	2	50	4
30536A1	ReadySpace Wall Unit with 305A1	4	50	48
30536A3	ReadySpace Wall Unit with 305A3	4	50	48
30536A5	ReadySpace Wall Unit with 305A5	5	50	48
30536B1	ReadySpace Wall Unit with 305B1	3	50	24

ReadySpace Mobile Floor Unit Packages		Capacity/Qty.		
Model No.	Description (L x W x H)	No. of Ctns.	Wt. Cap. (lbs.)	Bin Qty.
30553	24¾" x 23" x 52"	1	150	N/A
30553210S	Unit with 30210STONE Bins	6	150	120
30553220S	Unit with 30220STONE Bins	6	150	120
30553230S	Unit with 30230STONE Bins	6	150	60
30553235S	Unit with 30235STONE Bins	6	150	30
30553A1	ReadySpace Mobile Floor Unit with 305A1	9	150	120
30553A3	ReadySpace Mobile Floor Unit with 305A3	9	150	120
30553A5	ReadySpace Mobile Floor Unit with 305A5	11	150	120
30553B1	ReadySpace Mobile Floor Unit with 305B1	7	150	64
30553LF	Leveling Feet for Floor Unit	-	150	-



30536
Wall Unit



98536
Bench Unit



COLOR
White



ReadySpace Bench Unit Packages		Capacity/Qty.		
Model No.	Description	No. of Ctns.	Wt. Cap. (lbs.)	Bin Qty.
98536	37¾" x 12" x 26¾" (Single)	1	100	N/A
98536210SS	Single-Sided Bench Unit with 30210STONE Bins	3	100	48
98536220SS	Single-Sided Bench Unit with 30220STONE Bins	3	100	48
98536230SS	Single-Sided Bench Unit with 30230STONE Bins	3	100	24
98536235SS	Single-Sided Bench Unit with 30235STONE Bins	3	100	12
98536320SS	Single-Sided Bench Unit with 30320STONE Bins	2	100	4
98536	37¾" x 22½" x 26¾" (Double)	1	100	N/A
98536210SD	Double-Sided Bench Unit with 30210STONE Bins	5	100	96
98536220SD	Double-Sided Bench Unit with 30220STONE Bins	5	100	96
98536230SD	Double-Sided Bench Unit with 30230STONE Bins	5	100	48
98536235SD	Double-Sided Bench Unit with 30235STONE Bins	5	100	24
98536320SD	Double-Sided Bench Unit with 30320STONE Bins	3	100	8



Rail Hanging Systems

IDEAL SYSTEMS FOR WORKSTATIONS



FEATURES

- 1 14-gauge steel rails securely support AkroBins®, 19-Series Cabinets and InSight® Ultra-Clear Bins (sold separately)
- 2 Heavy-duty steel for strength and durability
- 3 Durable powder-coated finish

PRODUCT HIGHLIGHTS

- **EFFICIENT** – Allow for fast, easy organization and parts retrieval
- **SINGLE-SIDED** – Units are ideal for placement against a wall to save space
- **DOUBLE-SIDED** – Units can “float” in any room environment and can be picked from both sides
- **MOBILE KIT** – Available to mobilize two-sided rack
- **STEEL RAIL** – Wall mountable rail is ideal for supply rooms and workstations



Rail Hanging Systems				Dimensions (In.)			AkroBins Model No. (Bin Weight Capacity)‡										InSight Bins (Bin Weight Capacity)				19-Series Cabinets
Model No.	Description	Wt. Cap.	Ctn. Qty.	L	W	H	30210 (10 lbs.)	30220 (10 lbs.)	30224 (30 lbs.)	30230 (30 lbs.)	30234 (50 lbs.)	30235 (50 lbs.)	30239 (50 lbs.)	30240 (60 lbs.)	30250 (75 lbs.)	30255 (60 lbs.)	305A1 (10 lbs.)	305A3 (10 lbs.)	305A5 (15 lbs.)	305B1 (25 lbs.)	
30008*	Rack, 1-Sided	250	1	36	14½	53	96	96	48	48	48	24	24	24	12	16	96	96	96	48	6
30016*	Rack, 2-Sided	500	1	36	20	53	192	192	96	96	96	48	48	48	24	32	192	192	192	96	12
30148	Steel Rail	110	1	47¾	¾	3	11	11	11	8	8	4	4	4	2	2	11	11	11	8	2
30812	Bin Cart	250	1	38½	24	36½	96	96	64	48	48	24	24	24	12	16	96	96	96	48	12

*Can be assembled as a 12 or 16 rail rack. ‡Do not exceed rail weight capacity.

Mobile Kit					
Model No.	Description	Wt. Cap.	Ctn. Qty.	Fits Hanging System No.	Castors
30424	Mobile Kit - Casters & Handle	500	1	30016	4" Polyolefin
98400	Suspension Straps (Set of 2) ‡‡	–	1	30008, 30016, 30812	

‡‡ 98400 suspension straps required for hanging 19-Series Cabinets. Two straps per cabinet needed to secure cabinet to rack.

ACCESSORIES

Suspension Straps Model No 98400
Hang 19-Series Cabinets securely to rail rack



30016 with (1) 30424, (12) 98400, (12) 19320

Pick Racks

HIGH-DENSITY STORAGE WITH ANGLED SHELVES

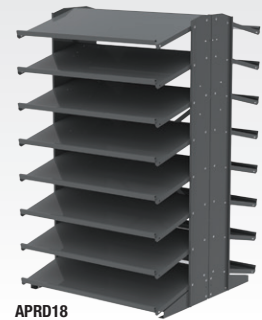
800.253.2467
akro-mils.com



APRBENCH



APRS



APRD18

**NEW!
SIZE**

COLOR
Gray



FEATURES

- 1 16-gauge steel construction
- 2 Angled shelves keep parts at the front of bin
- 3 Works with Akro-Mils' industry-leading Shelf Bins, ShelfMax® Bins, Indicator® Bins, AkroDrawers® and System Bins™
- 4 Durable, powder-coated finish

PRODUCT HIGHLIGHTS

- **EFFICIENT** – Improve workspace organization and efficiency
- **HEAVY-DUTY** – Up to 1,800 lb. capacity with Double-Sided 18" Racks
- **VARIETY** – Choose from 3 styles: Single-Sided, Double-Sided, Bench, and two shelf depths: 12" and 18"

12" Deep Pick Rack 12" D x 36 3/4" W x 60 1/4" H				Shelf Dimensions (in.)		
Model No.	Description	Wt. Capacity (Lbs.)	Caster	D	L	H
APRS	Single-Sided Pick Rack (no bins)	400	–	12 1/2"	35 3/4"	6 1/8"
APRD	Double-Sided Pick Rack (no bins)	800	–	12 1/2"	35 3/4"	6 1/8"
APRDMOBILE	Mobile Kit (Handle & Dolly) for Double-Sided Pick Rack	500	4" x 1 1/2" Polyolefin	–	–	–

Bench Rack 12" D x 36 3/4" W x 25" H			Bin Dimensions (in.)			
Model No.	Description	Bin Model No.	L	W	H	Bin Qty.
APRBENCH	Bench Pick Rack, No Bins	–	–	–	–	–
APRBENCH120*	Bench Pick Rack with Shelf Bins	30120	11 1/2"	4 1/2"	4"	24
APRBENCH150*	Bench Pick Rack with Shelf Bins	30150	11 1/2"	8"	4"	12
APRBENCH040**	Bench Pick Rack with ShelfMax	30040	11 1/2"	4 1/2"	6"	24
APRBENCH090**	Bench Pick Rack with ShelfMax	30090	11 1/2"	6"	6"	15
APRBENCH312	Bench Pick Rack with System Bins	30312	12"	33"	5"	3

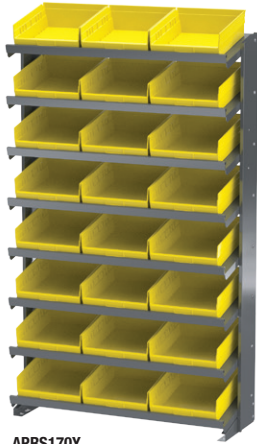
*Specify color of Shelf Bins when ordering: Red, Blue, Yellow, Green or White. **Specify color of ShelfMax Bins when ordering: Red, Blue, Yellow, Gray or Crystal Clear.

18" Deep Pick Rack 18" D x 36 3/4" W x 60 1/4" H				Shelf Dimensions (in.)		
Model No.	Description	Wt. Capacity (Lbs.)	Caster	D	L	H
APRS18	Single-Sided Pick Rack (no bins)	900*	–	18 1/2"	35 3/4"	6 1/8"
APRD18	Double-Sided Pick Rack (no bins)	1800**	–	18 1/2"	35 3/4"	6 1/8"
APRD18MOBILE	Mobile Kit (Handle & Dolly) for Double-Sided Pick Rack	1800	5" x 2" Phenolic	–	–	–

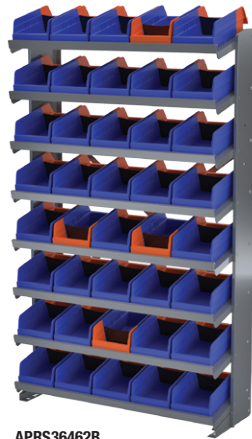
*When anchored to wall and floor. **When anchored to floor.

Pick Rack Systems

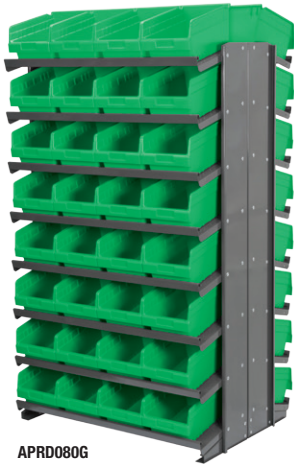
12" DEEP ANGLED SHELVES



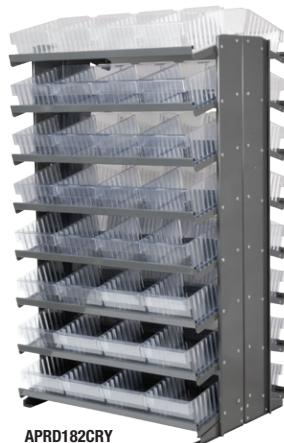
APRS170Y



APRS36462B



APRD080G



APRD182CRY



APRD312R

12" Deep Single-Sided Pick Rack			Bin Dimensions (In.)			Bin Qty.	Colors
Model No.	Description	Bin Model No.	L	W	H		
Shelf Bins							
APRS110	Rack with Shelf Bins	30110	11%	2¾	4	96	B,R,Y,G,W,SC
APRS120	Rack with Shelf Bins	30120	11%	4%	4	64‡	B,R,Y,G,W,SC
APRS130	Rack with Shelf Bins	30130	11%	6%	4	40‡	B,R,Y,G,W,SC
APRS150	Rack with Shelf Bins	30150	11%	8%	4	32‡	B,R,Y,G,W,SC
APRS170	Rack with Shelf Bins	30170	11%	11%	4	24	B,R,Y,G,W,SC
ShelfMax Bins							
APRS040	Rack with ShelfMax	30040	11%	4%	6	64	B,R,Y,G,W,SC
APRS080	Rack with ShelfMax	30080	11%	8%	6	32	B,R,Y,G,W,SC
APRS090	Rack with ShelfMax	30090	11%	6%	6	40	B,R,Y,G,W,SC
APRSAST00	Rack with ShelfMax	30040 / 30090	See above			32 / 20	B,R,Y,G,W,SC
Indicator Bins							
APRS36442B	Rack with Indicator Bins	36442BLUE	11%	4%	4	64‡	B
APRS36462B	Rack with Indicator Bins	36462BLUE	11%	6%	4	40‡	B
AkroDrawers							
APRS112	Rack with AkroDrawers	31112	11%	11%	4%	24	B,R,Y,GRY,CRY
APRS142	Rack with AkroDrawers	31142	11%	3%	4%	72	B,R,Y,GRY,CRY
APRS162	Rack with AkroDrawers	31162	11%	5%	4%	48	B,R,Y,GRY,CRY
APRS182	Rack with AkroDrawers	31182	11%	8%	4%	32	B,R,Y,GRY,CRY
APRSAST	Rack with AkroDrawer Mix	31142, 31162, 31182	See Above			18 / 24 / 8	B,R,Y,GRY,CRY
System Bins							
APRS312	Rack with System Bins	30312	12	33	5	8‡	B,R,Y

Specify color of bins when ordering. ‡Bonus bins included. B=Blue, R=Red, Y=Yellow, G=Green, W=White, SC=Clear, GRY=Gray, CRY=Crystal Clear.

12" Deep Double-Sided Pick Rack			Bin Dimensions (In.)			Bin Qty.	Colors
Model No.	Description	Bin Model No.	L	W	H		
Shelf Bins							
APRD110	Rack with Shelf Bins	30110	11%	2¾	4	192	B,R,Y,G,W,SC
APRD120	Rack with Shelf Bins	30120	11%	4%	4	128‡	B,R,Y,G,W,SC
APRD130	Rack with Shelf Bins	30130	11%	6%	4	80‡	B,R,Y,G,W,SC
APRD150	Rack with Shelf Bins	30150	11%	8%	4	64‡	B,R,Y,G,W,SC
APRD170	Rack with Shelf Bins	30170	11%	11%	4	48	B,R,Y,G,W,SC
ShelfMax Bins							
APRD040	Rack with ShelfMax	30040	11%	4%	6	128	B,R,Y,G,W,SC
APRD080	Rack with ShelfMax	30080	11%	8%	6	64	B,R,Y,G,W,SC
APRD090	Rack with ShelfMax	30090	11%	6%	6	80	B,R,Y,G,W,SC
APRDAST00	Rack with ShelfMax	30040 / 30090	See above			64 / 40	B,R,Y,G,W,SC
Indicator Bins							
APRD36442B	Rack with Indicator Bins	36442BLUE	11%	4%	4	128‡	B
APRD36462B	Rack with Indicator Bins	36462BLUE	11%	6%	4	80‡	B
AkroDrawers							
APRD112	Rack with AkroDrawers	31112	11%	11%	4%	48	B,R,Y,GRY,CRY
APRD142	Rack with AkroDrawers	31142	11%	3%	4%	144	B,R,Y,GRY,CRY
APRD162	Rack with AkroDrawers	31162	11%	5%	4%	96	B,R,Y,GRY,CRY
APRD182	Rack with AkroDrawers	31182	11%	8%	4%	64	B,R,Y,GRY,CRY
APRDAST	Rack with AkroDrawer Mix	31142, 31162, 31182	See Above			36 / 48 / 16	B,R,Y,GRY,CRY
System Bins							
APRD312	Rack with System Bins	30312	12	33	5	16‡	B,R,Y

Specify color of bins when ordering. ‡Bonus bins included. B=Blue, R=Red, Y=Yellow, G=Green, W=White, SC=Clear, GRY=Gray, CRY=Crystal Clear.

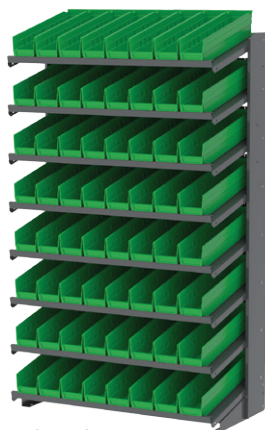


Pick Rack Systems

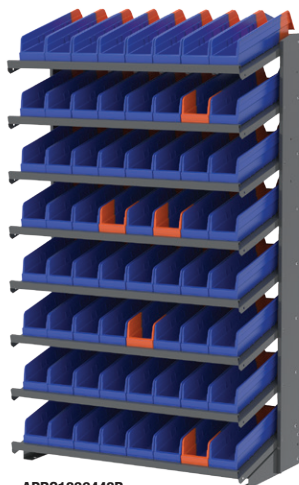
18" DEEP ANGLED SHELVES

800.253.2467
akro-mils.com

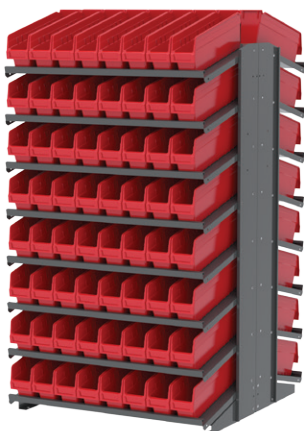
BIN HANGING
SYSTEMS & RACKS



APRS18128G



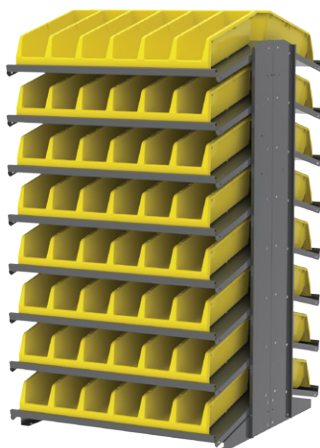
APRS1836448B



APRD18048R



APRD18148B



APRD18318Y

18" Deep Single-Sided Pick Rack			Bin Dimensions (In.)			Bin Qty.	Colors
Model No.	Description	Bin Model No.	L	W	H		
Shelf Bins							
APRS18128	Rack with Shelf Bins	30128	17%	4%	4	72‡	B,R,Y,G,W,SC
APRS18138	Rack with Shelf Bins	30138	17%	6%	4	48‡	B,R,Y,G,W,SC
APRS18158	Rack with Shelf Bins	30158	17%	8%	4	36‡	B,R,Y,G,W,SC
APRS18178	Rack with Shelf Bins	30178	17%	11%	4	24	B,R,Y,G,W,SC
ShelfMax Bins							
APRS18048	Rack with ShelfMax	30048	17%	4%	6	64	B,R,Y,G,W,SC
APRS18088	Rack with ShelfMax	30088	17%	8%	6	32	B,R,Y,G,W,SC
APRS18098	Rack with ShelfMax	30098	17%	6%	6	40	B,R,Y,G,W,SC
APRS18AST00	Rack with ShelfMax	30048 / 30098	See above			32/20	B,R,Y,G,W,SC
Indicator Bins							
APRS1836448	Rack with Indicator Bins	36448BLUE	17%	4%	4	72‡	B
APRS1836468	Rack with Indicator Bins	36468BLUE	17%	6%	4	48‡	B
AkroDrawers							
APRS18148	Rack with AkroDrawers	31148	17%	3%	4%	72	B,R,Y,GRY,CRY
APRS18168	Rack with AkroDrawers	31168	17%	5%	4%	48	B,R,Y,GRY,CRY
APRS18188	Rack with AkroDrawers	31188	17%	8%	4%	32	B,R,Y,GRY,CRY
APRS18118	Rack with AkroDrawers	31118	17%	11%	4%	24	B,R,Y,GRY,CRY
System Bins							
APRS18318	Rack with System Bins	30318	18	33	5	8‡	B,R,Y

Specify color of bins when ordering. ‡Bonus bins included. B=Blue, R=Red, Y=Yellow, G=Green, W=White, SC=Clear, GRY=Gray, CRY=Crystal Clear.

18" Deep Double-Sided Pick Rack			Bin Dimensions (In.)			Bin Qty.	Colors
Model No.	Description	Bin Model No.	L	W	H		
Shelf Bins							
APRD18128	Rack with Shelf Bins	30128	17%	4%	4	132‡	B,R,Y,G,W,SC
APRD18138	Rack with Shelf Bins	30138	17%	6%	4	84‡	B,R,Y,G,W,SC
APRD18158	Rack with Shelf Bins	30158	17%	8%	4	72‡	B,R,Y,G,W,SC
APRD18178	Rack with Shelf Bins	30178	17%	11%	4	48	B,R,Y,G,W,SC
ShelfMax Bins							
APRD18048	Rack with ShelfMax	30048	17%	4%	6	128	B,R,Y,G,W,SC
APRD18088	Rack with ShelfMax	30088	17%	8%	6	64	B,R,Y,G,W,SC
APRD18098	Rack with ShelfMax	30098	17%	6%	6	80	B,R,Y,G,W,SC
APRD18AST00	Rack with ShelfMax	30048 / 30098	See above			64/40	B,R,Y,G,W,SC
Indicator Bins							
APRD1836448	Rack with Indicator Bins	36448BLUE	17%	4%	4	132‡	B
APRD1836468	Rack with Indicator Bins	36468BLUE	17%	6%	4	84‡	B
AkroDrawers							
APRD18148	Rack with AkroDrawers	31148	17%	3%	4%	144	B,R,Y,GRY,CRY
APRD18168	Rack with AkroDrawers	31168	17%	5%	4%	96	B,R,Y,GRY,CRY
APRD18188	Rack with AkroDrawers	31188	17%	8%	4%	64	B,R,Y,GRY,CRY
APRD18118	Rack with AkroDrawers	31118	17%	11%	4%	48	B,R,Y,GRY,CRY
System Bins							
APRD18318	Rack with System Bins	30318	18	33	5	16‡	B,R,Y

Specify color of bins when ordering. ‡Bonus bins included. B=Blue, R=Red, Y=Yellow, G=Green, W=White, SC=Clear, GRY=Gray, CRY=Crystal Clear.