

Proto-Board® Design Workstation Series

PB-501

Analog Circuit Trainer

- Compact Logic Trainer
- 8 LED Logic Indicators, Dual Function
- Logic Switches & Input Ports Supplied
- Output Ports Also Supplied
- 840 Tie Point Breadboarding Area Using 1 UBS-100
- Featuring Clock Output & Logic Pulsers (2 Debounce Switches)

The low cost PB-501 Logic Trainer permits students of digital electronics to make efficient use of valuable laboratory time. Circuits such as clocks, switches and lights are permanent parts of the PB-501 and need not be repeatedly constructed. Students build only those circuits which directly pertain to a particular experiment.

Everything required to design and experiment with logic circuitry is included in the PB-501. Power is supplied by either four 1.5V batteries or an optional AC adapter. The PB-501 is housed in a tough molded plastic carrying case with an integral hinged cover which stacks conveniently for storage.



PB-501

POWER

4 "C" batteries (not included). Optional 6 VDC battery adapter, 300mA, unregulated Model 1200CA-1

CLOCK

1 KHz user variable with external capacitor
Logic "1" output current 100 mA max
Logic "0" output current 100mA max

PULSERS

Logic "1" output current 400μAmps
Logic "0" output current 16mA max

LOGIC SWITCHES / INPUT PORTS

Dual Function: 8 switches buffered by two 4 bit tri-state buffers with separate enables Logic "1" output current 2.6 mA max, Logic "0" output current 24 mA max Enables Logic "1" input current 400mA @ 5VDC Logic "0" input current none required.

LOGIC INDICATORS

Dual function: 8 LEDs driven by two 4-bit latches with separate enables

OUTPUT PORTS

Logic "1" input current 50μA @ 5VDC Logic "0" input current none required

CONNECTORS

All functions are permanently connected to a solderless tie point connector. Each tie point has 5 solderless connection points. Power and ground have 15 connection points each. All tie points are labeled.

BREADBOARDING

One UBS-100 solderless breadboarding socket is permanently attached to the unit. The UBS-100 can accommodate up to eight 14 pin DIP ICs with 4 tie points per pin plus eight power rails with 25 tie points each, total 840 tie points

GENERAL

Weight	(less batteries and adaptor) 1 lb. 6 oz.
Dimensions	2.562"H x 7.5"W x 10" D
Model Number	104-0501

Perfect for Educational Applications

ANALOG CIRCUIT TRAINER



- ▶ Light Weight, Only 1 lb. 12 oz & Durable Case
- ▶ Power pack included
- ▶ 2 Slide Pots, 10K & 100K
- ▶ 2 SPDT Slide Switches
- ▶ 2 BNC Connectors
- ▶ 1 Speaker, 2", 8 Ohms

PB-500

LOGIC DESIGN TRAINER



- ▶ 8 LED Logic Indicators, Dual Function
- ▶ Output Ports Also Supplied
- ▶ 840 Tie Point Breadboarding Area
- ▶ Battery operated
- ▶ Featuring Clock Output & Logic Pulsers (2 Debounced Switches)

PB-501

ADVANCED LOGIC DESIGN TRAINER



- ▶ Two Fully Debounced Pushbuttons With True Logic Outputs
- ▶ TTL/CMOS Operation
- ▶ 8 SPST Logic Switches & Buffered LED Logic Indicators
- ▶ 7-Segment LCD Display
- ▶ 840 Tie Point Breadboard Area
- ▶ Power pack included

PB-502

POWERED BREADBOARDS



- ▶ Separate +12/-12 VDC power supplies, each capable of 250mA
- ▶ Now with AC power input
- ▶ Rugged metal enclosure
- ▶ Limited lifetime guarantee on sockets

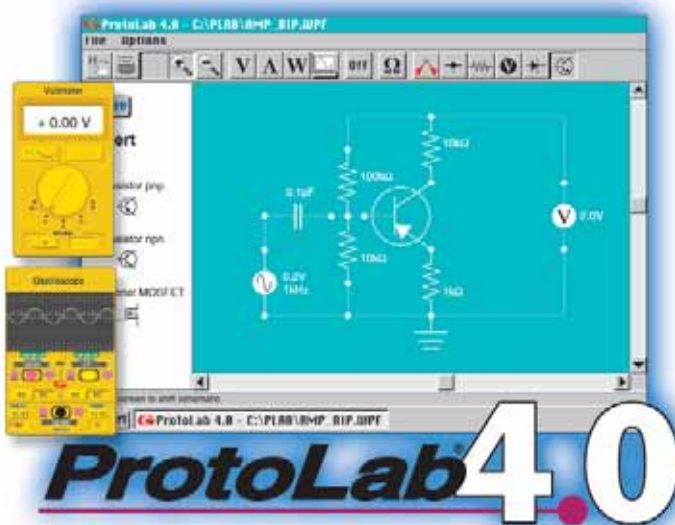
PB204



- ▶ Separate +5.5VDC / -5.5 - 18VDC power supply capable of 500mA @ 15VDC
- ▶ Factory pre-set power to ±15VDC
- ▶ Voltages adjustable internally
- ▶ AC power input
- ▶ Limited lifetime guarantee on sockets

PB203A

PROTO LAB® 4.0 CIRCUIT DESIGN AND SIMULATION SOFTWARE



- ▶ Easy-to-use interface: Create AC & DC circuits moments after installation with ProtoLab's easy "click & drag" component placement
- ▶ Choose from a list of active and passive analog components
- ▶ Five virtual instruments allow for instant, accurate circuit analysis
- ▶ Pre-designed circuit library included
- ▶ Low cost
- ▶ For Windows® 98 or above



PRO-S LAB

- ▶ Includes Model PB-10 Proto-Board®
- ▶ DC power pack included
- ▶ Power connector
- ▶ 25 pre-cut jumper wires
- ▶ Perfect for students & small experiments