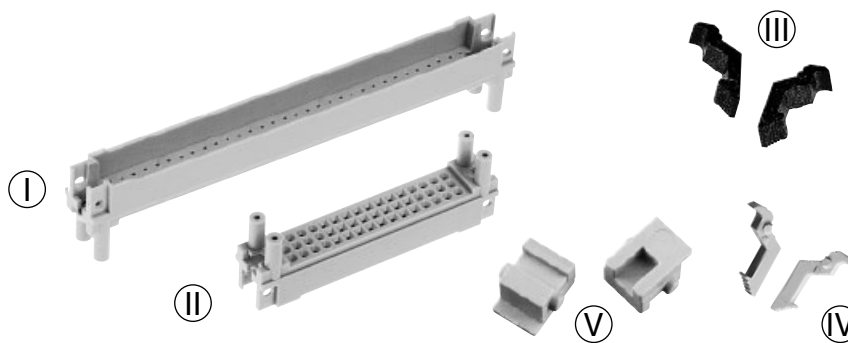


# Pin shroud



Number of contacts

# 96, 48



Pin shrouds  
for types C, 2C, R, 2R

DIN Signal  
up to 2 A

Identification	Termination length ± 0.3	pcb-thickness ± 0.4	Dimension a ± 0.1	Part No. – Pin shrouds with	
				press-in fixing <sup>1)</sup>	screw fixing
Pin shrouds for female connectors type C, R  I	13.0/ 13.2	1.6	6.7	09 03 000 9956	09 03 000 9966
		2.4	5.9	09 03 000 9957	09 03 000 9967
		3.2	5.1	09 03 000 9958	09 03 000 9968
		4.0	4.3	09 03 000 9959	09 03 000 9969
	17.0	1.6	9.9	09 03 000 9952	09 03 000 9962
		2.4	9.1	09 03 000 9953	09 03 000 9963
		3.2	8.3	09 03 000 9954	09 03 000 9964
		4.0	7.5	09 03 000 9955	09 03 000 9965
		4.8	6.7	09 03 000 9956	09 03 000 9966
		5.6	5.9	09 03 000 9957	09 03 000 9967
		6.4	5.1	09 03 000 9958	09 03 000 9968
	20.0	3.2	11.75	09 03 000 9950	09 03 000 9960
		4.0	10.7	09 03 000 9951	09 03 000 9961
		4.8	9.9	09 03 000 9952	09 03 000 9962
		5.6	9.1	09 03 000 9953	09 03 000 9963
		6.4	8.3	09 03 000 9954	09 03 000 9964
		7.2	7.5	09 03 000 9955	09 03 000 9965
Pin shrouds for female connectors type 2C, 2R  II	13.0/ 13.2	1.6	6.7	09 23 000 9956	09 23 000 9966
		2.4	5.9	09 23 000 9957	09 23 000 9967
		3.2	5.1	09 23 000 9958	09 23 000 9968
		4.0	4.3	09 23 000 9959	09 23 000 9969
	17.0	1.6	9.9	09 23 000 9952	09 23 000 9962
		2.4	9.1	09 23 000 9953	09 23 000 9963
		3.2	8.3	09 23 000 9954	09 23 000 9964
		4.0	7.5	09 23 000 9955	09 23 000 9965
		4.8	6.7	09 23 000 9956	09 23 000 9966
		5.6	5.9	09 23 000 9957	09 23 000 9967
		6.4	5.1	09 23 000 9958	09 23 000 9968
	20.0	3.2	11.75	09 23 000 9950	09 23 000 9960
		4.0	10.7	09 23 000 9951	09 23 000 9961
		4.8	9.9	09 23 000 9952	09 23 000 9962
		5.6	9.1	09 23 000 9953	09 23 000 9963
		6.4	8.3	09 23 000 9954	09 23 000 9964
		7.2	7.5	09 23 000 9955	09 23 000 9965

Identification	Part No.
Locking lever for female connectors type C, 2C*  III	09 03 000 9914
Locking lever for female connectors type R, 2R*  IV	09 03 000 9913
Fixing bracket for shell housing C*  V	09 03 000 9921

01  
62

\* order 2 pieces per connector  
<sup>1)</sup> Processing only with press-in tools, see chapter 30