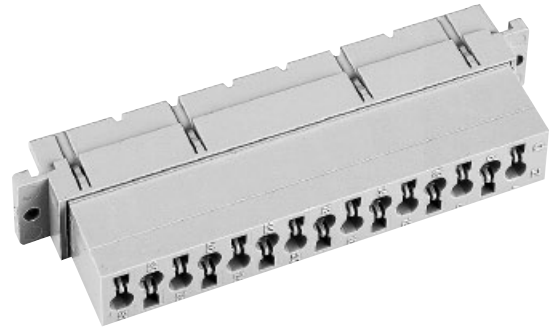


Number of contacts

15



Female connectors

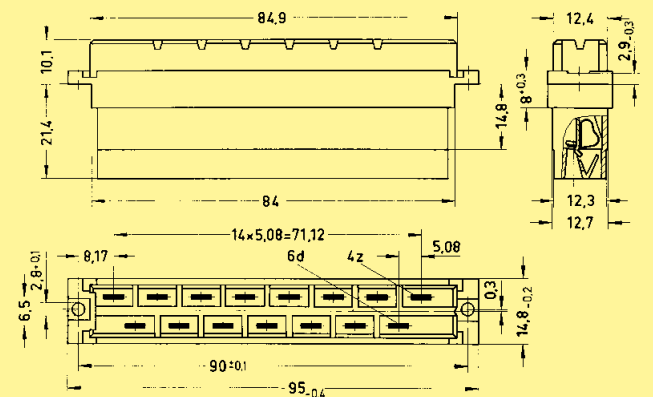
Identification	Number of contacts	Part No.	Drawing	Dimensions in mm
----------------	--------------------	----------	---------	------------------

Female connector with cage clamp
May be used in a shell housing

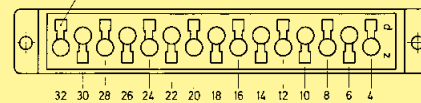
15

Performance level 1 acc. to IEC 60 603-2

09 06 015 2813¹⁾

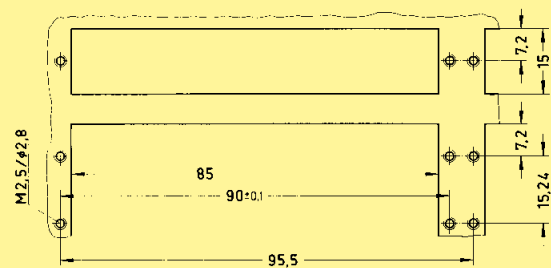


Contact arrangement View from termination side
Slot for screw driver

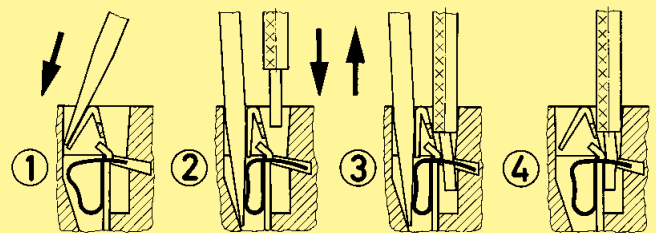


Shell housing see chapter 20

Panel cut out



Termination instructions



Screw driver width: 2.5 x 0.4 mm
 Stripping length: 4 - 10 mm
 Wire gauge: 0.14 - 1.5 mm² (AWG 26 - 16)

DIN Power up to 15 A

04 13

¹⁾ Railway classification NFF 16-101, Smoke index: F1, Flammability class: I2