

Ten reasons to buy a Fluke Visual IR Thermometer

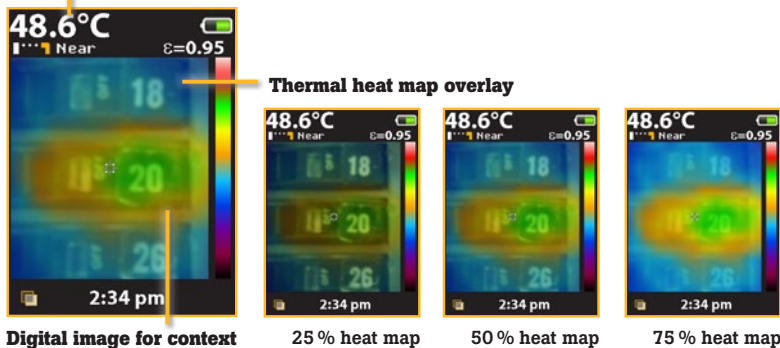
The Fluke Visual IR Thermometers combine the convenience of a spot thermometer with the visual advantage of an infrared camera, creating a brand new tool category.

Application Note

[1. Designed to see it all]

Every Fluke Visual IR Thermometer has a built-in digital camera with a thermal heat map overlay to instantly identify the exact location of the problem.

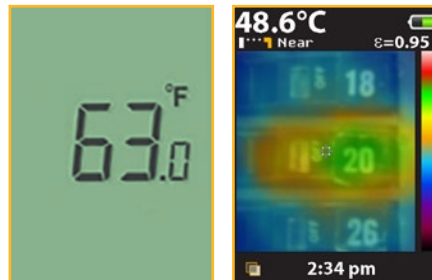
Centerpoint temperature (°C/°F)



Digital image for context
Clearly see that breaker 20 is overloaded and communicate your findings.

[2. Measure with confidence]

Traditional infrared thermometers may seem affordable and convenient, but they only show an average temperature of an area. The Fluke Visual IR Thermometer gives you the visual image of exactly what you are measuring.



Traditional IR thermometer
Optimized for single point measurements.

Visual IR Thermometer
Digital image with heat map overlay detects the exact location of the issue.



Fluke **VT02**
Visual IR
Thermometer

Fluke **VT04**
Visual IR
Thermometer

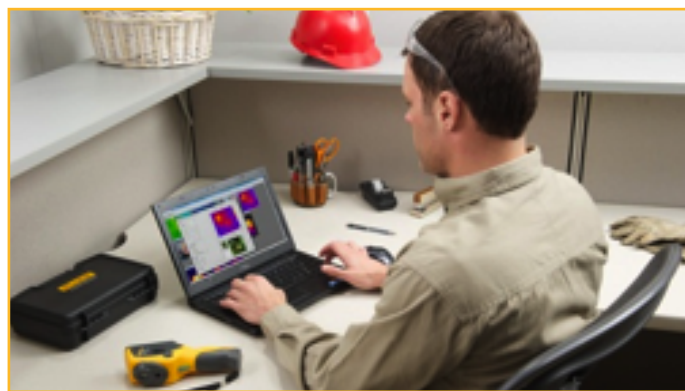
[3. Detect issues instantly]

Eliminate the tedious tasks of taking multiple grid readings. Every Fluke Visual IR Thermometer has a built-in digital camera with a thermal heat map overlay to instantly identify the exact location of the problem.



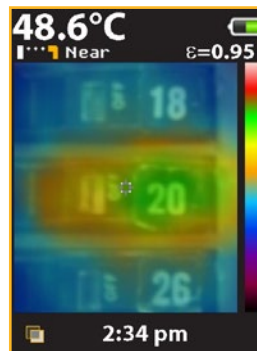
[4. Professionally document your work]

Producing a professional report with the included SmartView® Software is just as powerful as the tool itself. Easily communicate issues or document repairs that have been made.



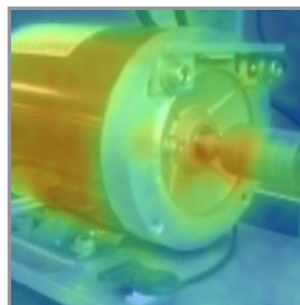
[5. No training required]

The Fluke Visual IR Thermometer is an ideal frontline troubleshooting tool that can uncover issues right out of the box with no training required. For example, it is apparent that breaker 20 is overloaded, requiring further investigation.

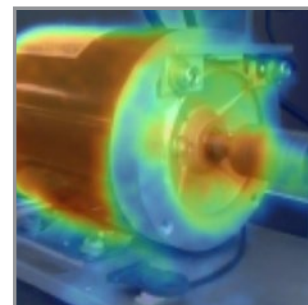


[6. Establish baselines for preventive maintenance]

Monitor mission critical equipment over time while inspecting under similar operating conditions to identify potential problems early. The VTO4 also offers automated alarm monitoring to allow you to capture images unattended.



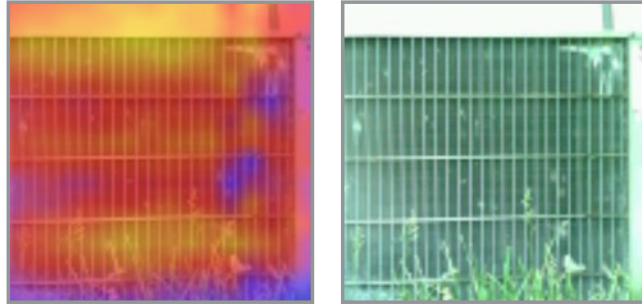
Baseline heat map image



Heat map image taken at later date indicates further mechanical inspection required

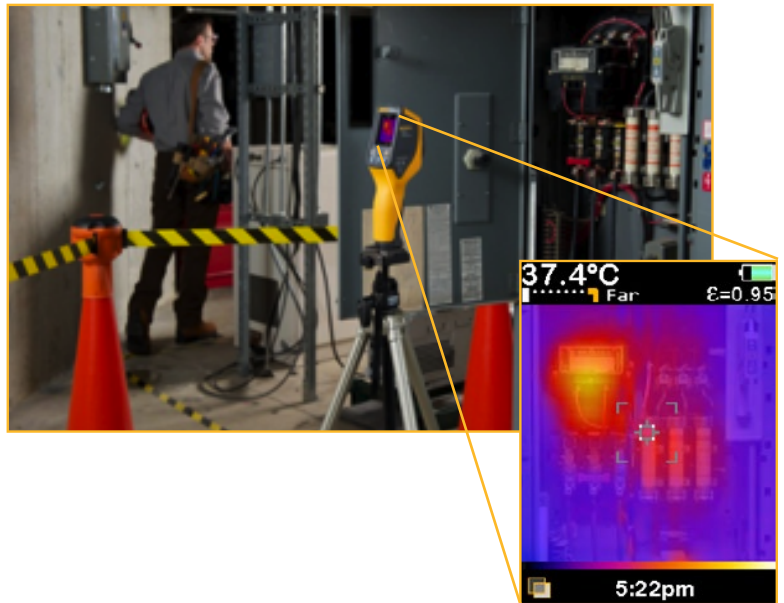
[7. Uncover issues you may have missed]

In this typical AC condenser, you can quickly see the uneven distribution of heat in the center row, which may indicate a potential issue. This could easily be missed with a traditional IR thermometer.



[8. Troubleshoot intermittent issues]

The auto monitoring feature in the VT04 allows you to troubleshoot intermittent issues that may be challenging to discover, such as looking for connection or overload conditions in combination starters. Set the time lapse alarm, and capture images in 30 second to 1 hour intervals. Images are saved to the included SD card.

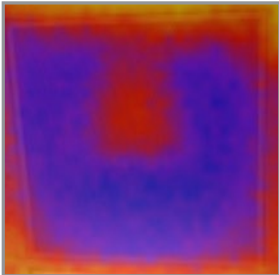


[9. Carry it everywhere]

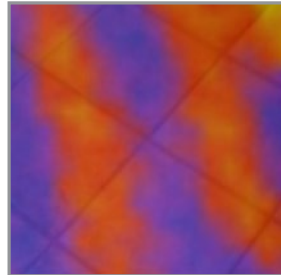
While many infrared cameras claim to be compact, the Fluke Visual IR Thermometers are specifically designed to fit in your pocket.



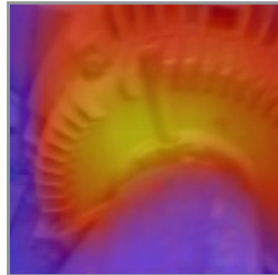
**[10. Just as versatile as the issues
you are asked to troubleshoot]**



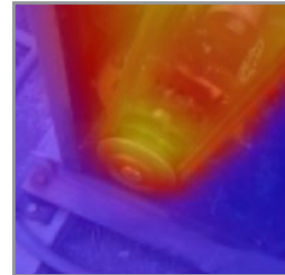
**Potentially faulty cold
air damper**



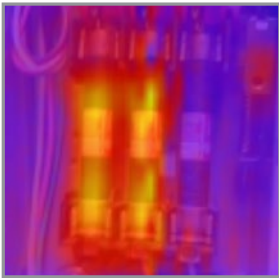
**Inspection of hydronic
floor heat**



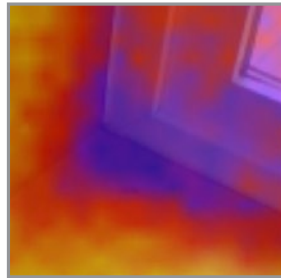
**Overheated motor
output**



**Thermal inspection
of pulley**



**Unbalanced load in 3
phase supply**



**Energy loss around
window**

Set yourself up for success.

Follow a few simple steps that will help you troubleshoot issues in facilities applications:

- Wear proper PPE for your environment, according to your local, national, and company protocols. Always remain the proper distance away from potentially hazardous equipment.
- Have direct access to the target you are scanning. Disassembly may be required around your target.
- When you've found a potential issue using the blended heat map, move closer to take a center-point temperature measurement.
- Understand how surface material characteristics such as emissivity can influence your readings.

Fluke Europe B.V.
P.O. Box 1186
5602 BD Eindhoven
The Netherlands
Web: www.fluke.co.uk

For more information call:
In Europe/M-East/Africa
+31 (0) 40 2 675 200 or
Fax +31 (0) 40 2 675 222

Fluke (UK) Ltd.
52 Hurricane Way
Norwich, Norfolk
NR6 6JB
United Kingdom
Tel.: +44 (0) 20 7942 0700
Fax: +44 (0) 20 7942 0701
E-mail: industrial@uk.fluke.nl
Web: www.fluke.co.uk

©2013 Fluke Corporation. All rights reserved.
Data subject to alteration without notice.
8/2013 Pub_ID: 12112-eng

**Modification of this document is not permitted
without written permission from Fluke Corporation.**