

Panel Mount Coupler and Socket



Panel Mount Coupler and Socket (FACKSpm, SACKS2pm, SGACKSpm, SGKSmcpm, SKFwhpm and FKFBkpm)

Our innovative new range of RJ45 couplers and connectors is designed for easy mounting on panels of virtually any thickness. The range now consists of six items: a Category 5e, Category 6 and Category 6A shielded coupler and a Category 5e, Category 6 and Category 6A socket.

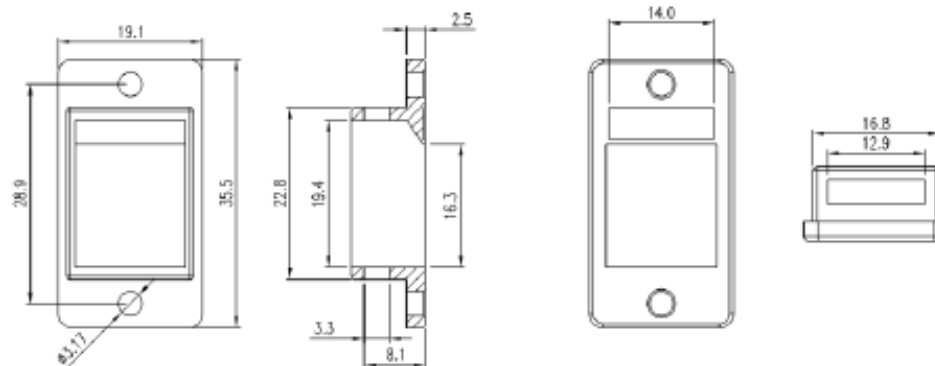
Features

- High performance Cat 5e/Cat 6/Cat 6A FTP panel mount couplers and Cat 5e/Cat 6/Cat 6A panel mount sockets
- Die cast adaptor is robust and ensures easy mounting (into standard cut-out) and reliable earthing
- Outstanding value
- Butterfly wing toolless IDC enables quick and easy termination of sockets

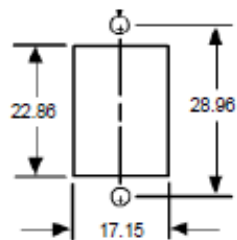
Specifications

- Kit includes coupler/connector, panel mount adaptor and 2 x round head (4.40 x ¼") machine screws
- Contact Materials: 50µ"/ 1.27µm gold plating over nickel-plated phosphor bronze
- For specifications of couplers and 6A socket see separate WebPages as follows:
 - Cat 5e FTP keystone coupler :
http://www.tuk.co.uk/tuk_live/product_details.php?category_id=&pId=61
 - Cat 6 FTP keystone coupler
http://www.tuk.co.uk/tuk_live/product_details.php?category_id=&pId=60:
 - Cat 6A FTP keystone coupler:
http://www.tuk.co.uk/tuk_live/product_details.php?category_id=8&pId=127
 - Cat 6A FTP keystone jack:
http://www.tuk.co.uk/tuk_live/product_details.php?category_id=&pId=113

Panel mount adaptor for keystones



Requirements for cut-out:



TUK Ltd
Code: KApma