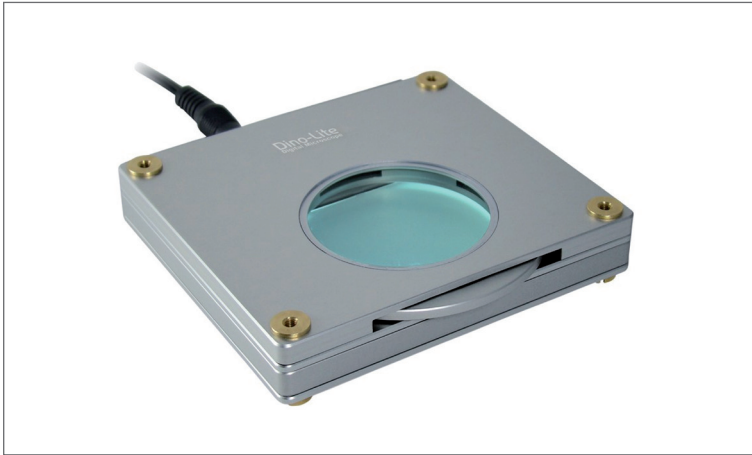


# BL-ZW1



**BL-ZW1 is a back light illumination table with adjustable polarization for the Dino-Lite.**

Please note that the polarizing feature has to be used with the Dino-Lite digital microscope with polarizing abilities; such as the AM4113ZT or the AD4113ZT handheld digital microscope. An optional accessory that can be attached to the BL-ZW1 is the BL-GC1 Gem Clip (The BL-GC1 Gem Clip is sold separately).

The polarizing ability of the BL-ZW1 can be used for many applications such as but not limited to geology (examining thin rock sections), metallurgy, and chemistry. For a business owner point of view, it can be used for jewelers for inspecting and presenting jewelry/ gems. The BL-ZW1 polarizing ability can also be useful for industrial applications; such as inspecting flexible circuit boards (FPC) for flaws and defects.

## TECHNICAL SPECIFICATIONS

Polarizer	Yes
Unit Dimension	10cm (L) x 9cm (W) x 2cm (H)
Power Source	USB or DC adaptor switchable
Operating Voltage	DC 5V+- 0.5V
Light Intensity	Over 5000 cd/m <sup>2</sup> with freely rotatable polarizer
Housing Material	Aluminum Alloy

## APPLICATIONS

Science / Engineering work / Study and Educational use / Dermatology / Detailed repair / Assembly & quality control / Electronic industry / Mechanical industry / Hobbies & collecting (coin, stamp, watch, jewelry, etc) / Antiques / Enforcement