

# LPX 40/60 ENCLOSURES

## AMERICAS

5810 Van Allen Way  
Carlsbad, CA 92008  
Telephone: 760-930-4600  
Facsimile: 760-930-0698

## EUROPE

Astec House, Waterfront Business Park  
Merry Hill, Dudley  
West Midlands, DY5 1LX, UK  
Telephone: 44 (1384)842-211  
Facsimile: 44 (1384) 843-355

## ASIA

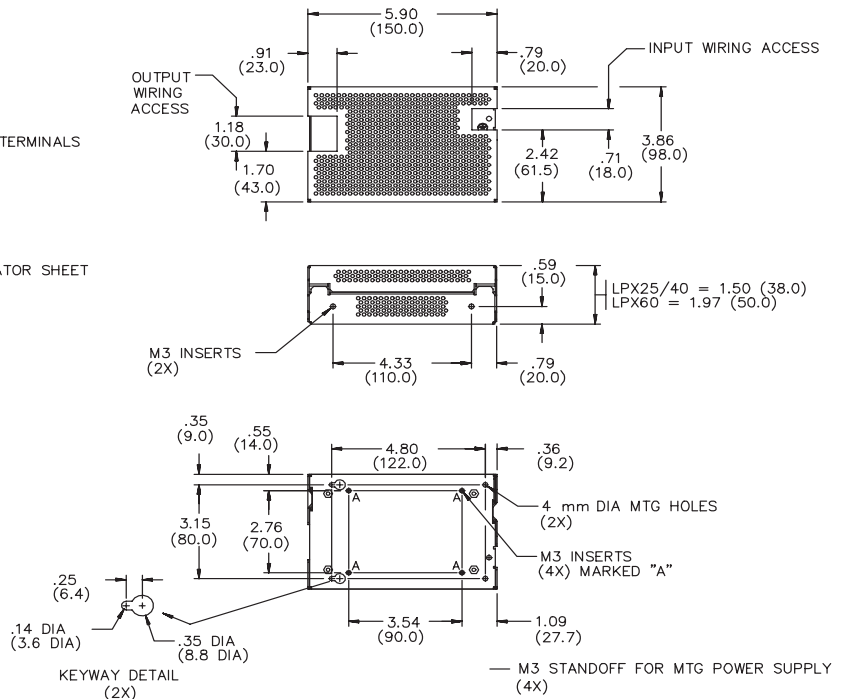
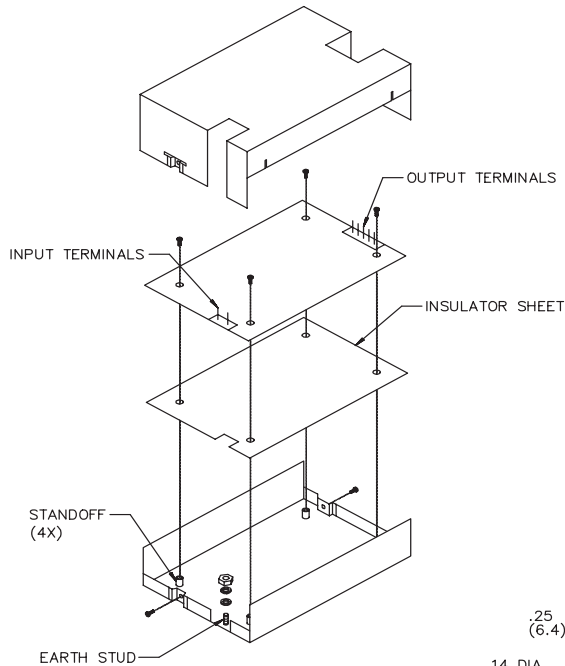
17th Floor, Lu Plaza  
2 Wing Yip Street  
Kwun Tong, Kowloon  
Hong Kong SAR  
Telephone: 852-2176-3333  
Facsimile: 852-2176-3888



## Installation Notes

### LPX 40 and LPX 60 • Cover Enclosure Kit

LPX40 will fit both the LPX4X and LPX2X power supplies.



## MATERIALS

- 1 Base
  - 1 Cover (top and sides perforated)
  - 6 M3 x 6mm screws with captive lock washer
  - 1 M4 nut
  - 1 M4 star washer
  - 1 M4 spring washer
  - 1 Plastic insulator sheet
- } For earth stud

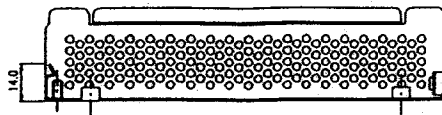
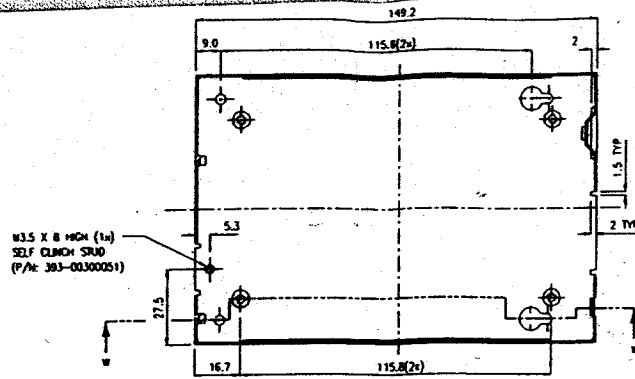
## NOTES

1. All dimensions in inches (mm).
2. Overall dimensions:  
LPX 25/40: 5.9 (150) x 3.86 (98) x 1.5 (38)  
LPX 60: 5.9 (150) x 3.86 (98) x 1.97 (50)
3. Base plate has three sets of customer mountings:  
a. Bottom mounting (4x) M3 inserts, max. screw penetration 3mm;  
b. Bottom mounting (2x) 4mm clear holes plus 2 keyways (see keyway detail);  
c. Side mountings (2x) M3 inserts, max. screw penetration 6mm.
4. Ensure insulator is correctly fitted in base under PCB to maintain safety creepage and clearance distances.
5. Ensure base is firmly connected to supply earth via the earth stud marked ⊕.
6. When using this enclosure, ensure that relevant safety standards (e.g., EN60950) are complied with, in respect to creepage and clearance distances, and distances through insulation.

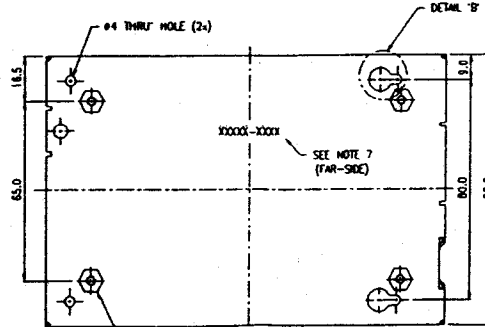
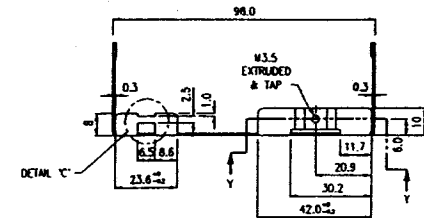
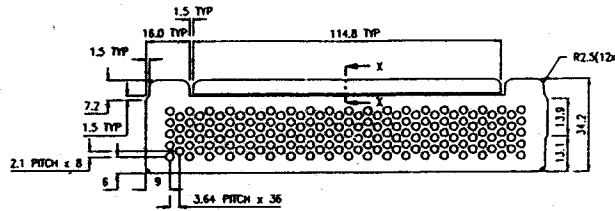
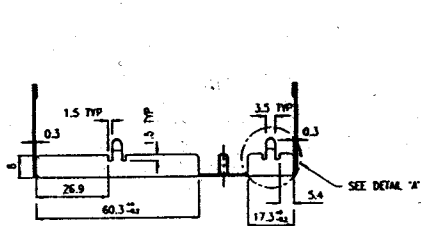


NOTES:-

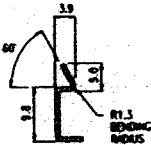
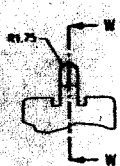
1. MATERIAL : 0.8 ± 0.07mm THK. ELECTROGALVANIZED STEEL  
ASTEC RAW MAT'L P/N. 380-00100120
2. PART REWORKING SURFACE FINISH REFER TO ASTEC COSMETIC ACCEPTANCE  
STD NO.: ASP2. (TYPE B FOR OUTER SURFACE, & TYPE C FOR INNER SURFACE).
3. PART MUST BE FREE FROM BURRS, SHARP EDGES, GREASE AND DIRT.
4. AVOID SHARP CORNERS AND MAKE RADIUS 1mm (APPROX.).
5. ALL INSIDE BEND RADII SHOULD BE 0.5mm UNLESS OTHERWISE SPECIFIED.
6. PART SHOULD BE FLAT AND SQUARE AFTER FORMING UNLESS OTHERWISE SPECIFIED.
7. LAST FIVE DIGITS OF ASTEC PART NO. AND VENDOR CODE SHOULD BE STAMPED IN 3mm HIGH CHARACTERS WITHIN THIS AREA.
8. A MIN. OF 5 FIRST PIECES 'OFF-TOOL' SAMPLES MUST BE SUPPLIED TO ASTEC COMPONENT ENGG DEPT WITH THE VENDOR'S QUALITY INSPECTION REPORT FOR EVALUATION AND DESIGN APPROVAL BEFORE PRODUCTION DELIVERY.
9. ALL FURTHER DELIVERIES MUST BE ACCOMPANIED BY THE QUALITY INSPECTION REPORT.
10. ON PRE-COATED MATERIAL (ELECTROGALVANIZED STEEL) BENDING MARKS WILL BE ACCEPTABLE IF PASS A 48 HOURS SALT-SPRAY TEST UNDER ASTM-8117.
11. THE STANDOFF SHOULD BE ASSEMBLED AFTER FORMING AND CONFORM TO ASTEC STANDARD P/N. 393-00000000.
12. ALL THREADED HOLES MUST BE APPLIED ANTI-CORROSION COATING PROTECTING RUSTNESS CORROSION PRIOR TO SHIPMENT.
13. TAPPED HOLES SHALL WITHSTAND A TIGHTENING TORQUE OF 15 IN-LB.



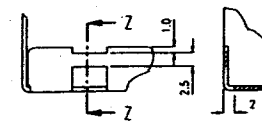
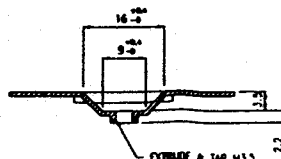
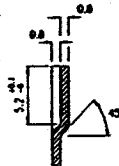
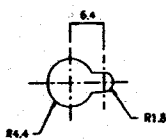
SECTION W-W



FOR REFERENCE ONLY



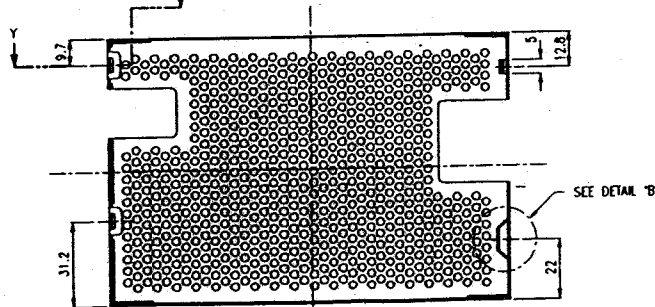
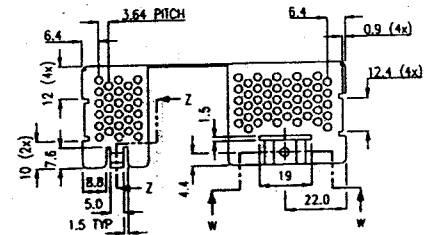
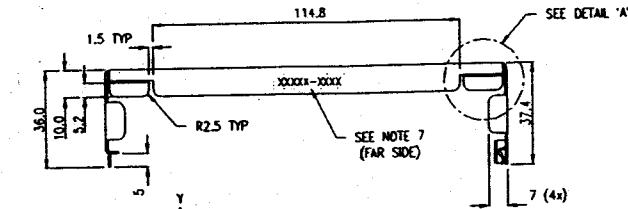
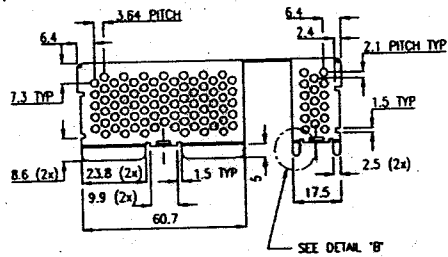
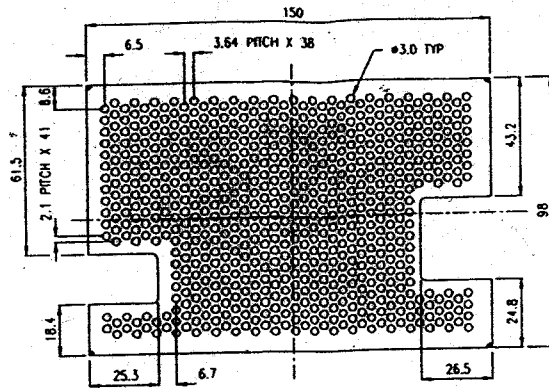
SECTION W-W



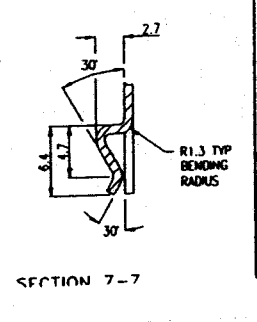
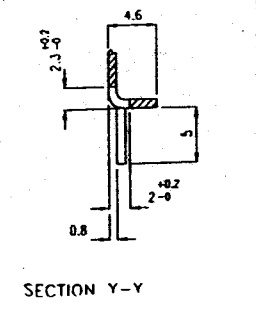
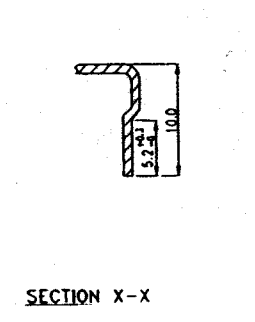
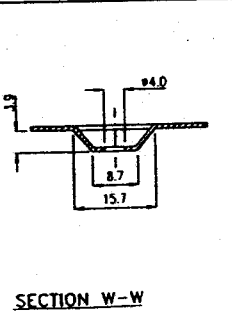
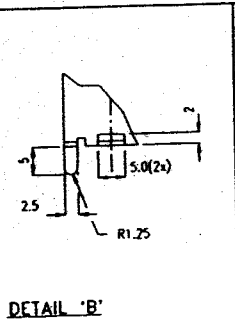
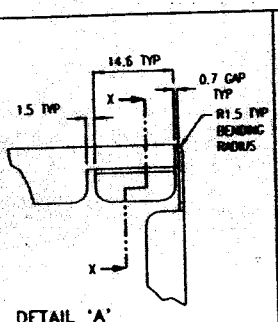
WHEN MACHINE DRAWING ALL DIMENSIONS ARE IN MM UNLESS OTHERWISE SPECIFIED SCALE 1:1 DATE 02/02/2004	DO NOT SCALE DRAWING DWG NO. 130084 REVISED BY DATE 02/02/2004 DRAWN BY DATE 02/02/2004	TITLE BASE FIRST USED ON UP242	PART NO 403-810674
--	--	---	-----------------------

NOTES :

1. MATERIAL : 0.8 ± 0.07mm THK. ELECTROGALVANIZED STEEL  
ASTEC RAW MAT'L P/N : 380-00100120
2. PART REQUIRING SURFACE FINISH REFER TO ASTEC COSMETIC ACCEPTANCE  
STD NO.: ASP2. (TYPE B FOR OUTER SURFACE & TYPE C FOR INNER SURFACE)
3. PART MUST BE FREE FROM BURRS, SHARP EDGES, GREASE AND DIRT.
4. AVOID SHARP CORNERS AND HAVE R 1mm (APPROX.)
5. ALL INSIDE BEND RADIUS SHOULD BE 0.5mm UNLESS OTHERWISE SPECIFIED.
6. PART SHOULD BE FLAT AND SQUARE AFTER FORMING UNLESS OTHERWISE SPECIFIED.
7. LAST FIVE DIGITS OF ASTEC PART NO. AND VENDOR CODE SHOULD BE STAMPED IN 3mm HIGH CHARACTERS WITHIN THIS AREA ON FAR SIDE. NO MARKINGS TO BE VISIBLE ON BOTTOM SURFACE.
8. A MIN. OF 5 FIRST PIECES 'OFF-TOOL' SAMPLES MUST BE SUPPLIED TO ASTEC COMPONENT ENGG DEPT WITH THE VENDOR'S QUALITY INSPECTION REPORT FOR EVALUATION AND DESIGN APPROVAL BEFORE PRODUCTION DELIVERY.
9. ALL FURTHER DELIVERIES MUST BE ACCOMPANIED BY THE QUALITY INSPECTION REPORT.
10. ON PRE-COATED MATERIAL (ELECTROGALVANIZED STEEL) BENDING MARKS WILL BE ACCEPTABLE, IF PASS A 48 HOURS SALT-SPRAY TEST UNDER ASTM-B117.
11. ALL THREADED HOLES MUST BE APPLIED ANTI-CORROSION COATING PROTECTING RUSTINESS CORROSION PRIOR TO SHIPMENT.



FOR REFERENCE ONLY



OTHER DIMENSIONS SPECIFIED		DO NOT SCALE DRAWING		TITLE	
ALL DIMENSIONS ARE IN MM	UNLESS OTHERWISE SPECIFIED	DR	DATE	COVER	
DATE: 4.8.2	SCALE: 1:0.5	DR	DATE	FIRST USED ON	PART NO.
DESIGN: J.P. 0.1	CHECKED: C.4 DMC	DATE: 18.05	DESIGN: C.4 DMC	1565	085-496950
				MATERIAL	FINISH
				SEE NOTES	SEE NOTES