

## **AN-1600 LM26400Y Demonstration Board**

---

---

---

### **1 Introduction**

The LM26400Y demonstration board was designed to provide two 2A outputs at 1.2V and 2.5V respectively. It uses the HTSSOP package option of the LM26400Y for easier probing. The design emphasizes on the compactness of the LM26400Y PCB layout and is thermally optimized. The total solution size is about 20mm by 30mm. The board supports the conversion from an input voltage ranging from 5V to 20V down to output voltages of 1.2V and 2.5V. With the availability of a separate 5V rail and a couple of small bootstrap diodes, the board also supports an input voltage down to 3.3V with 2A output currents. The EN pins are pulled up to VIN by default for easy evaluation but can also be easily controlled by external logic.

The board also has two small C<sub>FF</sub> capacitors (C12 and C13) installed for improved load step response and elimination of output voltage overshoot after a short-circuit release.

The board's specifications are:

Input Voltage: 5V to 20V  
Maximum load current: 2A/output  
Peak Current Limit:  $\approx$  3A at 25°C  
Nominal Switching Frequency: 520 kHz

Output Voltages: 1.2V and 2.5V  
Minimum load current: 0A  
Measured Efficiency: 83% ( $V_{IN} = 5V$ ,  $I_{OUT2} = 2A$ )  
Size: 2 in. x 2 in.

### **2 Powering Up The Board**

Since the EN pins are directly tied to the input voltage, starting up the board is a single-step procedure. Simply connect a voltage rail between 5V and 20V to the VIN and GND terminals and there should be 1.2V and 2.5V output at the corresponding terminals. Certain bench-top power supplies upon powering up may shoot up to their maximum output voltages momentarily before settling to the programmed value. If their maximum voltage is above 22V, it can damage the LM26400Y demonstration board. In this case, either connect the board after the input power supply is powered up, or use the current limit knob of the power supply to bring up the input voltage.

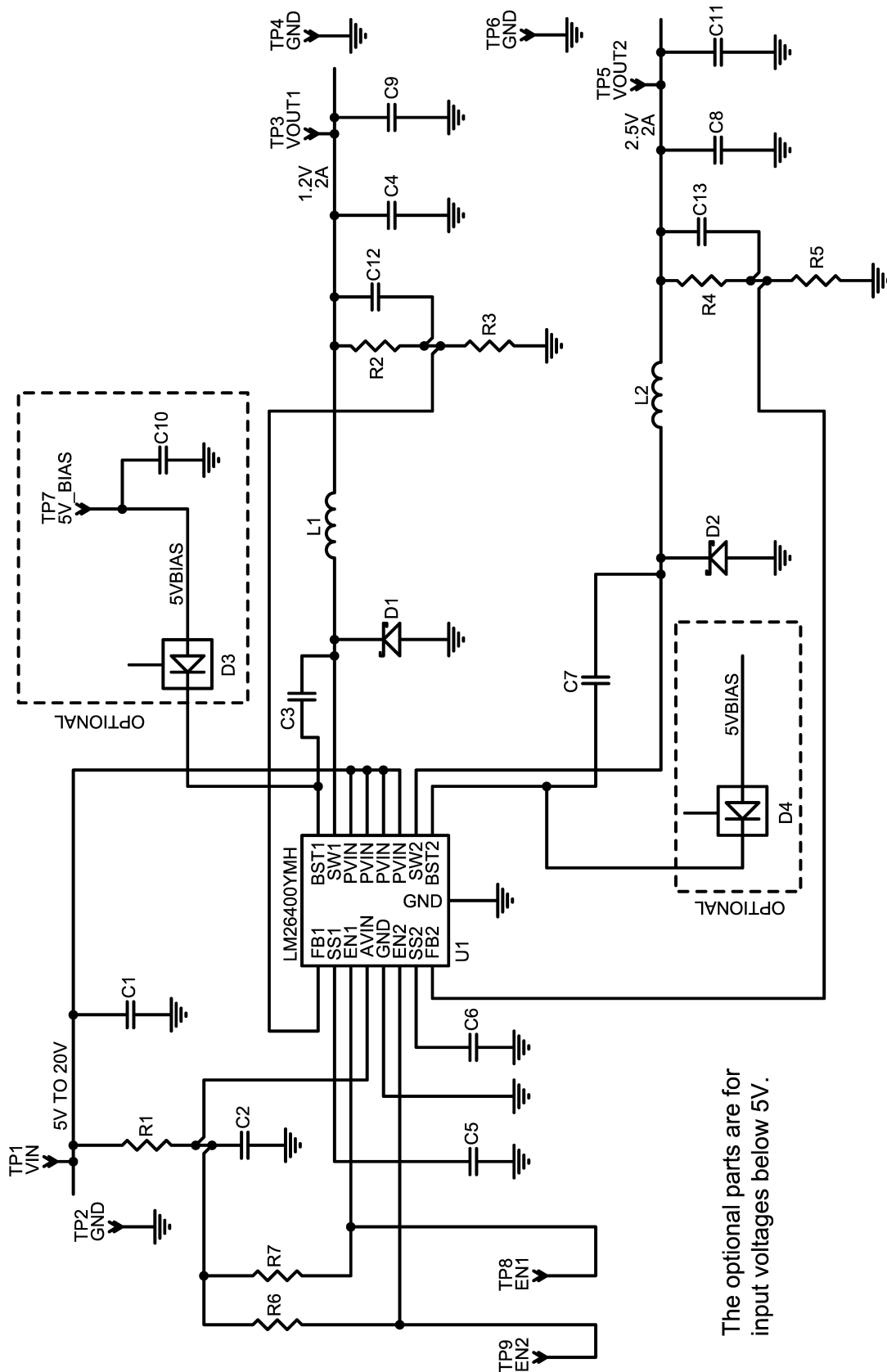
The linear soft-start ramps for the two output voltages should last about 1ms and 2ms. Load can be applied prior to power-up. If no load is applied, the two channels will operate in pulse skipping mode or discontinuous conduction mode. If an output is shorted either before or after start-up, removal of the short-circuit condition should bring the corresponding output back to normal voltage.

If additional output capacitors are desired, C8 and C9 on the back of the board are reserved for that purpose.

If it is desired to control the start-up and shutdown timing, connect the logic signals to the EN1 and/or EN2 pads on the back of the board. Make sure the voltages on the EN pads are never higher than VIN. If only a soft-start slope needs to be adjusted, simply change the corresponding SS capacitor (C5 or C6).

To operate between 3.3V and 5V of input voltage, populate D3 and D4 (on the back of the board) each with a SOT-23 Schottky diode such as the BAT54 and apply a 5V supply to the "5V\_Bias" pad on the back. Do not exceed 6V on the 5V bias. The LM26400Y device itself can work with an input voltage as low as 3V. The demonstration board when using an external bootstrap bias can operate down to 3.3V under room temperature. This extra 0.3V requirement is due to the large duty cycle in the 2.5V channel being too close to the maximum allowed.

3 Board Schematic

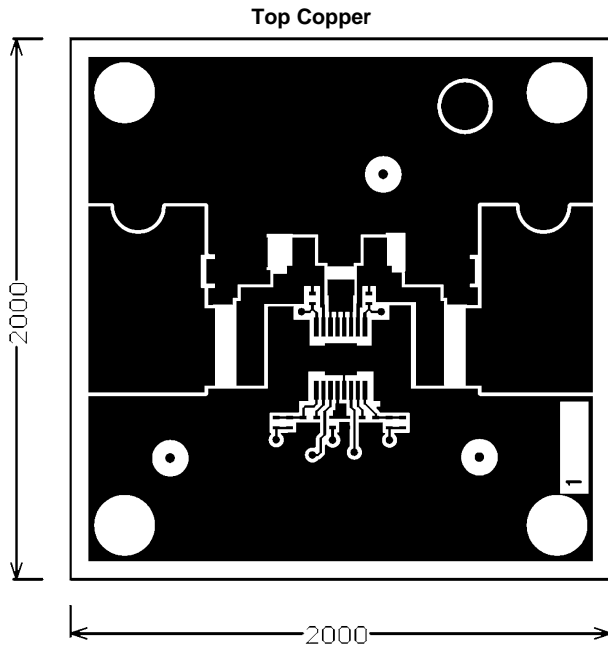


The optional parts are for input voltages below 5V.

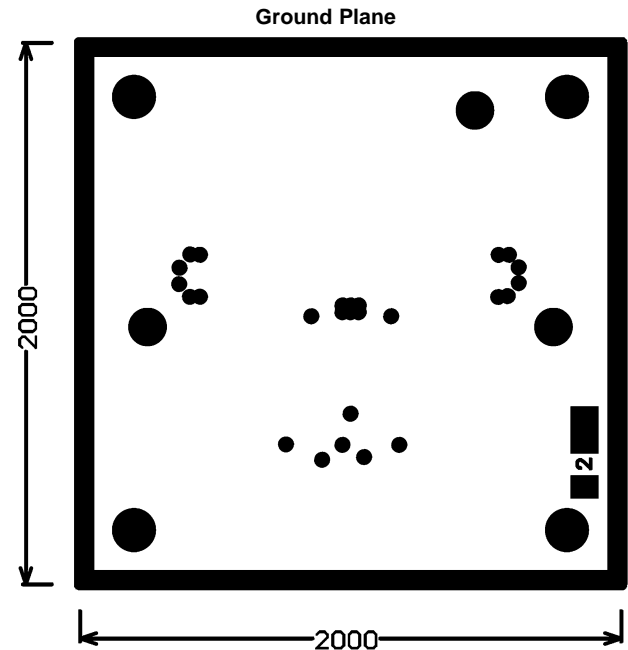
**Table 1. Bill of Materials**

Item	Designator	Description	Manufacturer	Part No.	Qty.
1	C5, C6, C12, C13	0.022 $\mu$ F, 6.3V, X5R, 10%, 0402	Kemet	C0402C223K9PACTU	4
2	C2, C3, C7	0.1 $\mu$ F, 25V, X5R, 10%, 0402	Taiyo Yuden	TMK105BJ104KV-F	3
3	C1	10 $\mu$ F, 25V, X5R, 20%, 1210	Taiyo Yuden	TMK325BJ106MM-T	1
4	C11	47 $\mu$ F, 6.3V, X5R, 20%, 1210	Taiyo Yuden	JMK325BJ476MM-T	1
5	C4	100 $\mu$ F, 6.3V, X5R, 20%, 1210	Taiyo Yuden	JMK325BJ107MM-T	1
6	D1, D2	2A, 30V, SMB	IR	20BQ030TRPBF	2
7	L1	5 $\mu$ H, 2.2A, 23m $\Omega$ , 7x7x2.8mm <sup>3</sup>	Sumida	CDRH6D26NP-5R0NC	1
8	L2	8.7 $\mu$ H, 2.2A, 25m $\Omega$ , 7x7x4mm <sup>3</sup>	Sumida	CDRH6D38NP-8R7NC	1
9	R1	4.7 $\Omega$ , 1%, 0402	Vishay	CRCW04024R70FNED	1
10	R2, R3, R5	5.9k $\Omega$ , 1%, 0402	Vishay	CRCW040259R0FKED	3
11	R4, R6, R7	18.7k $\Omega$ , 1%, 0402	Vishay	CRCW0402187RFKED	3
12	TP1-TP6	0.094" Diameter Solder Terminal	Cambion	160-1026-02-01-00	6
13	U1	Dual 2A, 20V, 500kHz PWM Switcher, HTSSOP-16	TI	LM26400	1

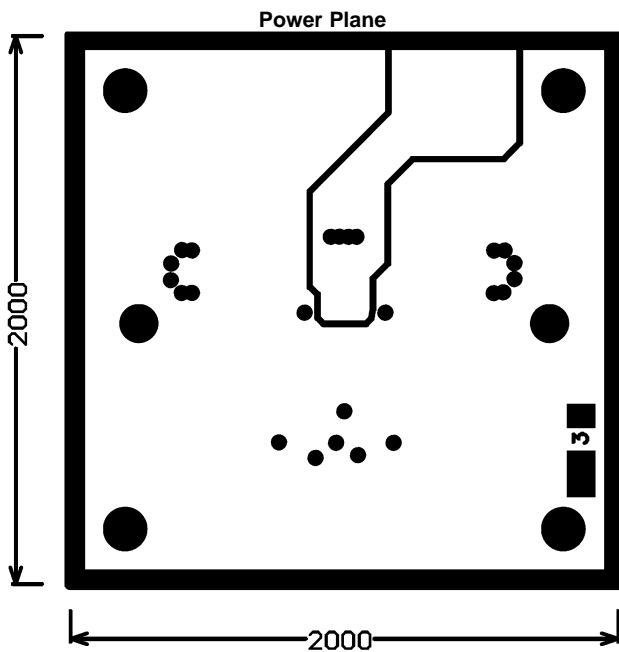
4 PCB Layout



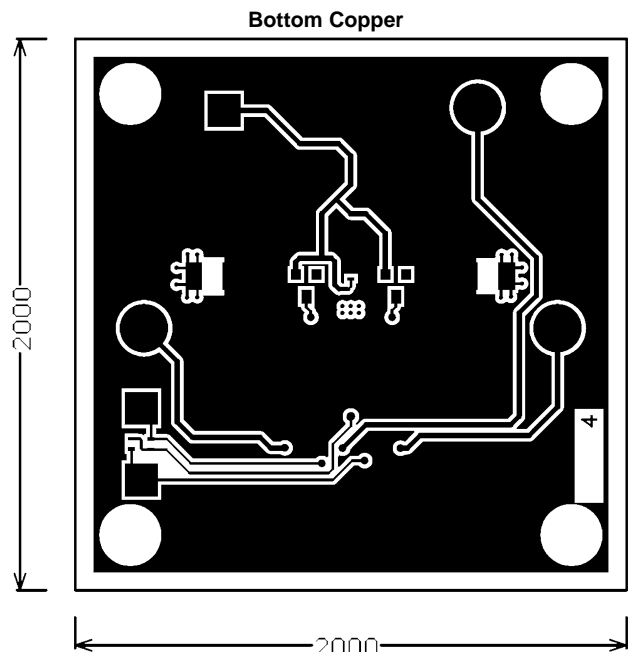
880013055-003 rev A



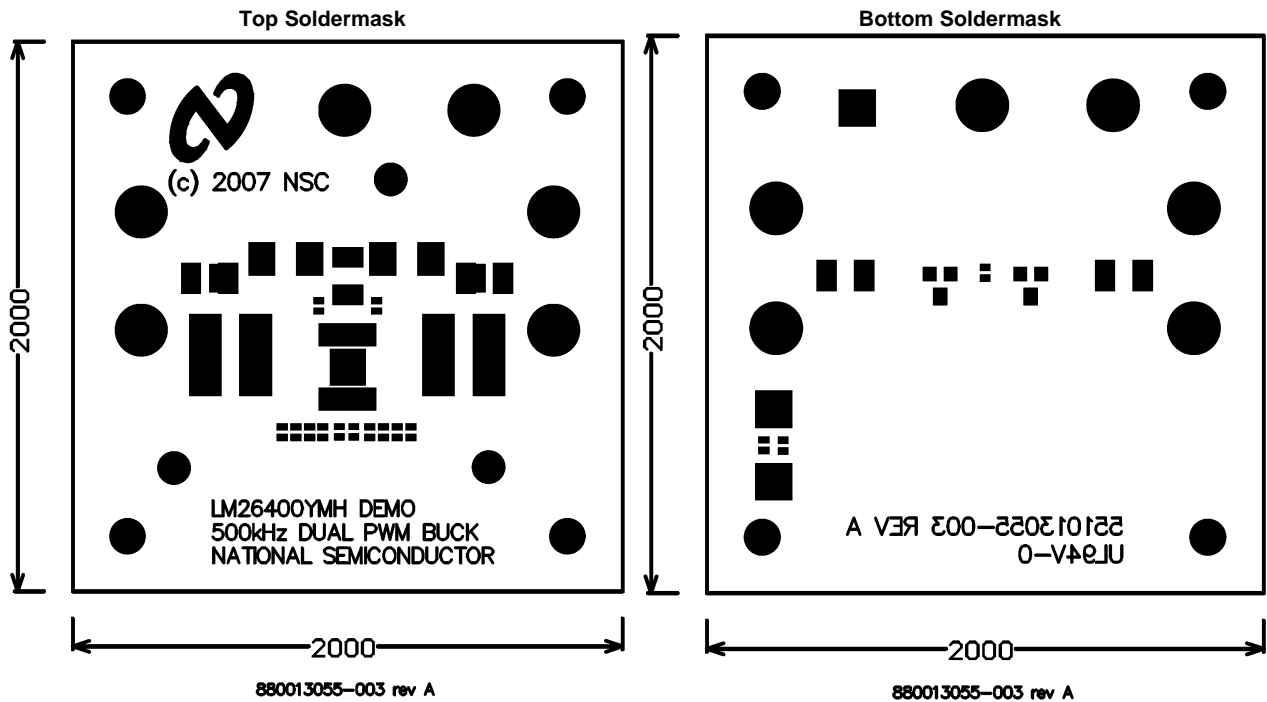
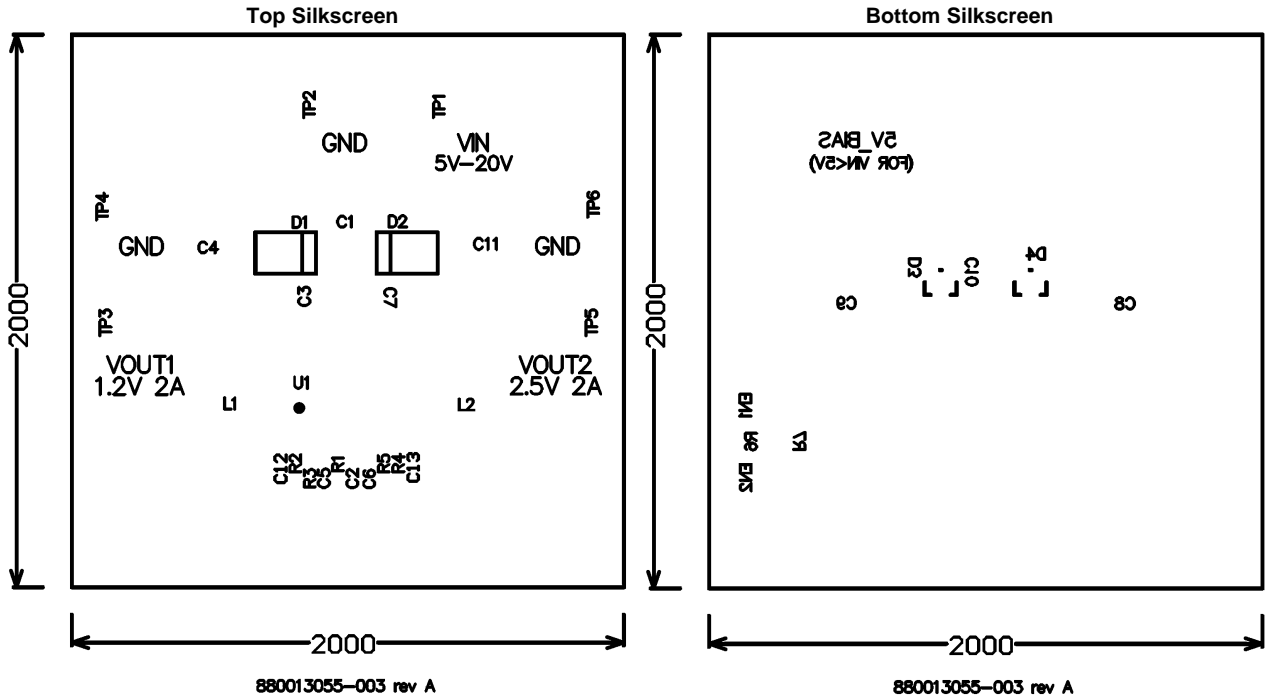
880013055-003 rev A



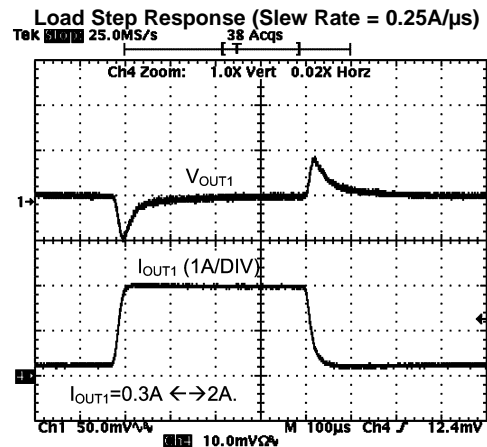
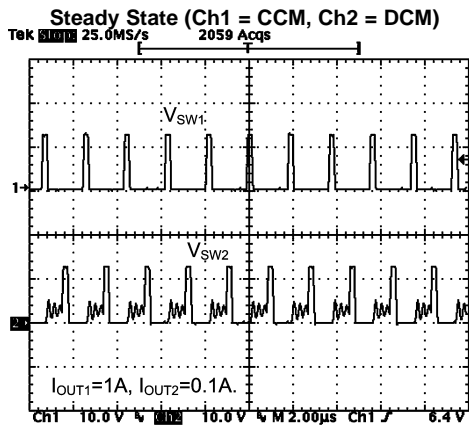
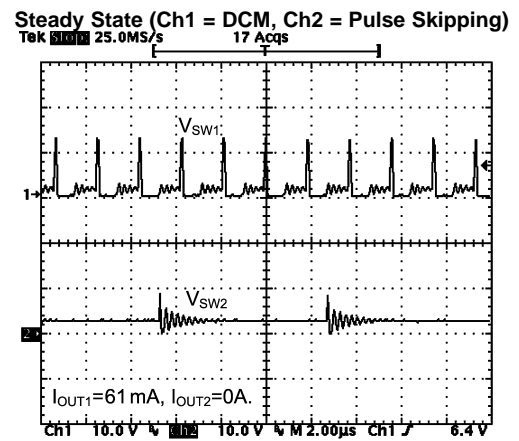
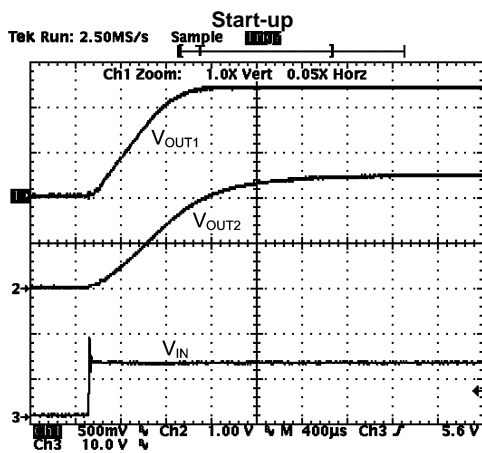
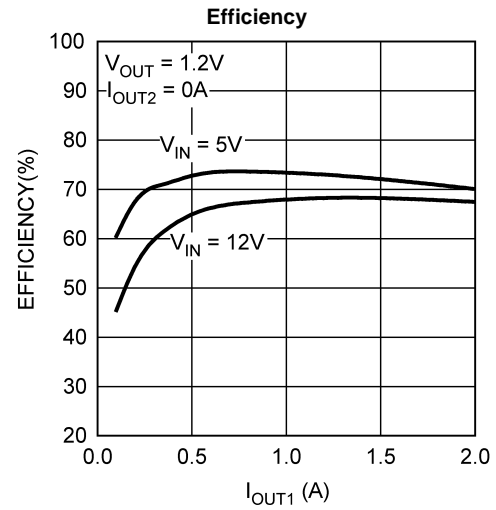
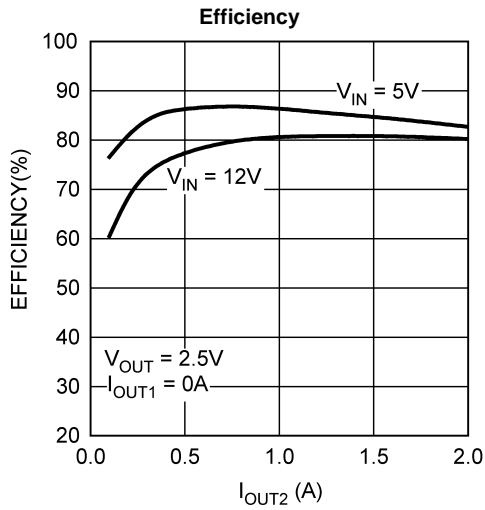
880013055-003 rev A



880013055-003 rev A



## 5 Typical Performance Characteristics



## IMPORTANT NOTICE

Texas Instruments Incorporated and its subsidiaries (TI) reserve the right to make corrections, enhancements, improvements and other changes to its semiconductor products and services per JESD46, latest issue, and to discontinue any product or service per JESD48, latest issue. Buyers should obtain the latest relevant information before placing orders and should verify that such information is current and complete. All semiconductor products (also referred to herein as "components") are sold subject to TI's terms and conditions of sale supplied at the time of order acknowledgment.

TI warrants performance of its components to the specifications applicable at the time of sale, in accordance with the warranty in TI's terms and conditions of sale of semiconductor products. Testing and other quality control techniques are used to the extent TI deems necessary to support this warranty. Except where mandated by applicable law, testing of all parameters of each component is not necessarily performed.

TI assumes no liability for applications assistance or the design of Buyers' products. Buyers are responsible for their products and applications using TI components. To minimize the risks associated with Buyers' products and applications, Buyers should provide adequate design and operating safeguards.

TI does not warrant or represent that any license, either express or implied, is granted under any patent right, copyright, mask work right, or other intellectual property right relating to any combination, machine, or process in which TI components or services are used. Information published by TI regarding third-party products or services does not constitute a license to use such products or services or a warranty or endorsement thereof. Use of such information may require a license from a third party under the patents or other intellectual property of the third party, or a license from TI under the patents or other intellectual property of TI.

Reproduction of significant portions of TI information in TI data books or data sheets is permissible only if reproduction is without alteration and is accompanied by all associated warranties, conditions, limitations, and notices. TI is not responsible or liable for such altered documentation. Information of third parties may be subject to additional restrictions.

Resale of TI components or services with statements different from or beyond the parameters stated by TI for that component or service voids all express and any implied warranties for the associated TI component or service and is an unfair and deceptive business practice. TI is not responsible or liable for any such statements.

Buyer acknowledges and agrees that it is solely responsible for compliance with all legal, regulatory and safety-related requirements concerning its products, and any use of TI components in its applications, notwithstanding any applications-related information or support that may be provided by TI. Buyer represents and agrees that it has all the necessary expertise to create and implement safeguards which anticipate dangerous consequences of failures, monitor failures and their consequences, lessen the likelihood of failures that might cause harm and take appropriate remedial actions. Buyer will fully indemnify TI and its representatives against any damages arising out of the use of any TI components in safety-critical applications.

In some cases, TI components may be promoted specifically to facilitate safety-related applications. With such components, TI's goal is to help enable customers to design and create their own end-product solutions that meet applicable functional safety standards and requirements. Nonetheless, such components are subject to these terms.

No TI components are authorized for use in FDA Class III (or similar life-critical medical equipment) unless authorized officers of the parties have executed a special agreement specifically governing such use.

Only those TI components which TI has specifically designated as military grade or "enhanced plastic" are designed and intended for use in military/aerospace applications or environments. Buyer acknowledges and agrees that any military or aerospace use of TI components which have **not** been so designated is solely at the Buyer's risk, and that Buyer is solely responsible for compliance with all legal and regulatory requirements in connection with such use.

TI has specifically designated certain components as meeting ISO/TS16949 requirements, mainly for automotive use. In any case of use of non-designated products, TI will not be responsible for any failure to meet ISO/TS16949.

### Products

Audio	<a href="http://www.ti.com/audio">www.ti.com/audio</a>
Amplifiers	<a href="http://amplifier.ti.com">amplifier.ti.com</a>
Data Converters	<a href="http://dataconverter.ti.com">dataconverter.ti.com</a>
DLP® Products	<a href="http://www.dlp.com">www.dlp.com</a>
DSP	<a href="http://dsp.ti.com">dsp.ti.com</a>
Clocks and Timers	<a href="http://www.ti.com/clocks">www.ti.com/clocks</a>
Interface	<a href="http://interface.ti.com">interface.ti.com</a>
Logic	<a href="http://logic.ti.com">logic.ti.com</a>
Power Mgmt	<a href="http://power.ti.com">power.ti.com</a>
Microcontrollers	<a href="http://microcontroller.ti.com">microcontroller.ti.com</a>
RFID	<a href="http://www.ti-rfid.com">www.ti-rfid.com</a>
OMAP Applications Processors	<a href="http://www.ti.com/omap">www.ti.com/omap</a>
Wireless Connectivity	<a href="http://www.ti.com/wirelessconnectivity">www.ti.com/wirelessconnectivity</a>

### Applications

Automotive and Transportation	<a href="http://www.ti.com/automotive">www.ti.com/automotive</a>
Communications and Telecom	<a href="http://www.ti.com/communications">www.ti.com/communications</a>
Computers and Peripherals	<a href="http://www.ti.com/computers">www.ti.com/computers</a>
Consumer Electronics	<a href="http://www.ti.com/consumer-apps">www.ti.com/consumer-apps</a>
Energy and Lighting	<a href="http://www.ti.com/energy">www.ti.com/energy</a>
Industrial	<a href="http://www.ti.com/industrial">www.ti.com/industrial</a>
Medical	<a href="http://www.ti.com/medical">www.ti.com/medical</a>
Security	<a href="http://www.ti.com/security">www.ti.com/security</a>
Space, Avionics and Defense	<a href="http://www.ti.com/space-avionics-defense">www.ti.com/space-avionics-defense</a>
Video and Imaging	<a href="http://www.ti.com/video">www.ti.com/video</a>

### TI E2E Community

[e2e.ti.com](http://e2e.ti.com)