



Ledil Oy  
Salorankatu 10  
FI-24240 SALO  
FINLAND  
[www.ledil.com](http://www.ledil.com)

## Ledil Globally

---

Local sales and technical support available in following countries  
Benelux, China, Germany, Italy, Portugal, Spain, UK, USA.  
See [www.ledil.com](http://www.ledil.com)

Shipping locations  
Salo, Finland  
Hong Kong, China

Authorized Distribution Partners  
See [www.ledil.com/where\\_to\\_buy](http://www.ledil.com/where_to_buy)

---



Q2/2012

## SINGLE LENSES



**LISA2-CLIP**  
D= 9.9 MM  
PMMA

**PHILIPS LUMILEDS  
LUXEON REBEL ES**  
FP11086\_LISA2-RS-CLIP  
FP11072\_LISA2-M-CLIP  
FP11122\_LISA2-O-CLIP  
FP11858\_LISA2-O-90-CLIP  
FP11073\_LISA2-W-CLIP  
FP11077\_LISA2-WW-CLIP  
FP11431\_LISA2-WWW-CLIP

**PHILIPS LUMILEDS  
LUXEON REBEL**  
FP11086\_LISA2-RS-CLIP  
FP11072\_LISA2-M-CLIP  
FP11122\_LISA2-O-CLIP  
FP11858\_LISA2-O-90-CLIP  
FP11073\_LISA2-W-CLIP  
FP11074\_LISA2-WW-CLIP  
FP11952\_LISA2-WWW-CLIP



**LISA2-PIN**  
D= 9.9 MM  
PMMA

**PHILIPS LUMILEDS  
LUXEON REBEL ES**  
FP11056\_LISA2-RS-PIN  
FP10992\_LISA2-M-PIN  
FP11126\_LISA2-O-PIN  
FP11853\_LISA2-O-90-PIN  
FP10993\_LISA2-W-PIN  
FP10997\_LISA2-WW-PIN  
FP11429\_LISA2-WWW-PIN

**PHILIPS LUMILEDS  
LUXEON REBEL**  
FP11056\_LISA2-RS-PIN  
FP10992\_LISA2-M-PIN  
FP11126\_LISA2-O-PIN  
FP11853\_LISA2-O-90-PIN  
FP10993\_LISA2-W-PIN  
FP10994\_LISA2-WW-PIN  
FP11951\_LISA2-WWW-PIN



**LISA**  
D= 10.8 - 11 MM  
PMMA

**PHILIPS LUMILEDS  
LUXEON REBEL**  
CP11629\_LISA-RS  
CP10544\_LISA-SS



**TINA**  
D= 16.1 MM  
PMMA

**PHILIPS LUMILEDS  
LUXEON REBEL**  
FA11212\_TINA-RS  
FA11209\_TINA-D  
FA11210\_TINA-M  
FA11203\_TINA-O  
FA11211\_TINA-W

**PHILIPS LUMILEDS  
LUXEON REBEL ES**  
FA12038\_TINA-RS  
FA12310\_TINA-D  
FA12040\_TINA-M



**TINA3**  
D= 16.1 MM  
PMMA

**PHILIPS LUMILEDS  
LUXEON REBEL**  
FA11905\_TINA3-S  
FA11870\_TINA3-OO  
FA11824\_TINA3-W  
FA11825\_TINA3-WW  
FA11826\_TINA3-WWW

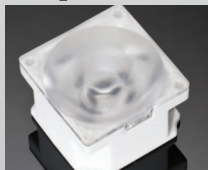
**PHILIPS LUMILEDS  
LUXEON REBEL ES**  
FA11905\_TINA3-S  
FA11870\_TINA3-OO  
FA11824\_TINA3-W  
FA11825\_TINA3-WW  
FA11826\_TINA3-WWW



**HEIDI**  
D= 21.6 MM  
PMMA

**PHILIPS LUMILEDS  
LUXEON REBEL**  
CA11663\_HEIDI-RS  
CA12242\_HEIDI-SS  
CA11264\_HEIDI-D  
CA11265\_HEIDI-M  
CA11266\_HEIDI-O  
CA11267\_HEIDI-O-90  
CA11268\_HEIDI-W  
CA12079\_HEIDI-W2

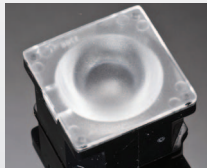
**PHILIPS LUMILEDS  
LUXEON REBEL ES**  
CA12537\_HEIDI-RS  
CA12530\_HEIDI-D  
CA12536\_HEIDI-M  
CA12079\_HEIDI-W2



**ROSE**  
21.6 MM X 21.6 MM  
PC

**PHILIPS LUMILEDS  
LUXEON REBEL / REBEL ES**  
FX10856\_RES-RS  
FX10853\_RES-SS  
FX10852\_RES-D  
FX10851\_RES-M  
FX10854\_RES-O  
FX10855\_RES-W  
FX11157\_RES-O-90

## SINGLE LENSES



**LAURA**  
21.6 MM X 21.6 MM  
PMMA

**PHILIPS LUMILEDS  
LUXEON REBEL / REBEL ES**  
CX11352\_LAURA-RS  
CX11645\_LAURA-SS  
CX11359\_LAURA-D  
CX11354\_LAURA-M  
CX11364\_LAURA-O  
CX11524\_LAURA-REF-W  
CX12568\_LAURA-W



**LAURA**  
21.6 MM X 21.6 MM  
PMMA

**PHILIPS LUMILEDS  
LUXEON REBEL / REBEL ES**  
CA11959\_LAURA-RS-PIN  
CA12011\_LAURA-SS-PIN  
CA11960\_LAURA-D-PIN  
CA11837\_LAURA-M-PIN  
CA12012\_LAURA-O-PIN  
CA12344\_LAURA-W-PIN



**LAURA**  
21.6 MM X 21.6 MM  
PMMA

**PHILIPS LUMILEDS  
LUXEON REBEL / REBEL ES**  
CP12631\_LAURA-RS-PG  
CP12634\_LAURA-SS-PG  
CP12632\_LAURA-D-PG  
CP12633\_LAURA-M-PG  
CP12635\_LAURA-O-PG  
CP12636\_LAURA-W-PG  
CP12637\_LAURA-WW-PG



**LEILA**  
D= 21.6 MM  
PMMA

**PHILIPS LUMILEDS  
LUXEON REBEL**  
CA12262\_LR2-RS  
CA11263\_LR2-D  
CA11264\_LR2-M  
CA11640\_LR2-O-90  
CA12393\_LR2-W

FCN10804\_LR1-RS  
FCN10806\_LR1-D  
FCN10803\_LR1-M  
FCN11458\_LR1-M2  
FCN10805\_LR1-REC  
FCN11106\_LR1-O-90  
FCN10890\_LR1-W

**PHILIPS LUMILEDS  
LUXEON REBEL ES**  
CA11929\_LR2-RS  
CA11930\_LR2-D  
CA11931\_LR2-M  
CA12629\_LR2-O-90  
CA12394\_LR2-W



**IRINA**  
D= 24.7 MM  
PMMA

**PHILIPS LUMILEDS  
LUXEON REBEL**  
C11421\_IRINA-RS



**EMILY**  
D= 26 MM  
PMMA

**PHILIPS LUMILEDS  
LUXEON REBEL**  
CA11387\_EMILY-SS  
CA11388\_EMILY-M  
CA11391\_EMILY-M2  
CA11389\_EMILY-O  
CA11390\_EMILY-O-90  
CA11934\_EMILY-W

**PHILIPS LUMILEDS  
LUXEON REBEL ES**  
CA12062\_EMILY-D  
CA12064\_EMILY-M  
CA12070\_EMILY-M2  
CA12066\_EMILY-O  
CA12068\_EMILY-O-90  
CA11934\_EMILY-W



**MIRA**  
D= 32.4 MM  
PC

**PHILIPS LUMILEDS  
LUXEON M**  
C12500\_MIRA-M  
C12501\_MIRA-W  
C12502\_MIRA-WW



**EVA**  
D= 35 MM  
PMMA

**PHILIPS LUMILEDS  
LUXEON M**  
C10684\_EVA-D  
C10685\_EVA-M  
C10686\_EVA-W  
C10909\_EVA-WW

## SPECIALTY PRODUCTS



**JULIA-A**  
18.9 MM X 4.7 MM  
PMMA

PHILIPS LUMILEDS  
LUXEON REBEL / REBEL ES  
F11947\_JULIA-A  
FA11948\_JULIA-A



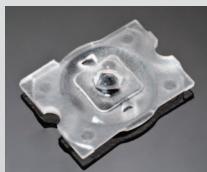
**IRIS**  
D= 38 MM  
PMMA

PHILIPS LUMILEDS  
LUXEON REBEL  
FCN12076\_IRIS-SCREW  
FCA12077\_IRIS



**STRADA-S**  
13.9 MM X 19.6 MM  
PMMA

PHILIPS LUMILEDS  
LUXEON REBEL  
CA12115\_STRADA-S  
C12114\_STRADA-S



**LOTTA-A**  
15.4 MM X 19.6 MM  
PMMA

PHILIPS LUMILEDS  
LUXEON REBEL  
C11518\_LOTTA-A  
CA11519\_LOTTA-A



**EMILY-WAS**  
D= 26 MM  
PMMA

PHILIPS LUMILEDS  
LUXEON REBEL / REBEL ES  
CA11998\_EMILY-SS-WAS  
CA12000\_EMILY-O-WAS



**VENLA-IRIS**  
D= 45 MM  
PC

PHILIPS LUMILEDS  
LUXEON S  
CP12090\_VENLA-S-IRIS



PHILIPS LUMILEDS  
LUXEON REBEL ES  
C12353\_LOTTA-A2  
CA12396\_LOTTA-A2



**STRADA-S**  
15.5MM X 19.6 MM  
PMMA

PHILIPS LUMILEDS  
LUXEON REBEL  
CA11248\_STRADA-S  
C11249\_STRADA-S



**RITA**  
D= 36 X 29 MM  
PC

PHILIPS LUMILEDS  
LUXEON REBEL / REBEL ES  
C12512\_RITA-A  
CA12514\_RITA-A



**FLARE-B**  
29.0 MM X 24.5 MM X  
14.5 MM  
PMMA

PHILIPS LUMILEDS  
LUXEON REBEL / REBEL ES  
C10946\_FLARE-B  
CA10932\_FLARE-B

## REFLECTORS



**LISA2 REFLECTOR**  
D= 9.9 MM  
PC

PHILIPS LUMILEDS  
LUXEON REBEL / REBEL ES  
C12469\_LISA2-R-PIN

PHILIPS LUMILEDS  
LUXEON A  
C12469\_LISA2-R-PIN



**VENLA**  
D= 45 MM  
METALLIZED PC

PHILIPS LUMILEDS  
LUXEON S  
C11773\_VENLA-S  
C11775\_VENLA-M  
C11776\_VENLA-W  
C11777\_VENLA-WW



**REGINA**  
D= 19 MM  
METALLIZED PC

PHILIPS LUMILEDS  
LUXEON REBEL  
C11347\_REGINA



**MIRELLA**  
D= 50 MM  
METALLIZED PC

PHILIPS LUMILEDS  
LUXEON M  
C12480\_MIRELLA-50-S-PIN  
C12481\_MIRELLA-50-M-PIN  
C12482\_MIRELLA-50-W-PIN  
CN12486\_MIRELLA-50-S-PIN-DL  
CN12487\_MIRELLA-50-M-PIN-DL  
CN12488\_MIRELLA-50-W-PIN-DL



**LAURA REFLECTOR**  
21.6 MM X 21.6 MM  
PMMA

PHILIPS LUMILEDS  
LUXEON REBEL / REBEL ES  
CA11524\_LAURA REFL-W



## MULTIPLE LENSES



**SATU**  
D= 21.8 MM (3UP)  
PMMA

**PHILIPS LUMILEDS  
LUXEON REBEL**  
C11916\_SATU-S  
C11917\_SATU-O  
C11602\_SATU-M  
C11544\_SATU-W



**CUTE-3**  
D= 35 MM (3UP)  
PMMA

**PHILIPS LUMILEDS  
LUXEON REBEL / REBEL ES**  
C10754\_CUTE-3-SS  
C10755\_CUTE-3-M  
C10756\_CUTE-3-W



**GT3**  
D= 35 MM (3UP)  
PMMA

**PHILIPS LUMILEDS  
LUXEON REBEL / REBEL ES**  
C10891\_GT3-S  
C10892\_GT3-M  
C10893\_GT3-W  
C11624\_GT3-VW



**GT4**  
D= 35 MM (4UP)  
PMMA

**PHILIPS LUMILEDS  
LUXEON REBEL**  
C10971\_GT4-S  
C10972\_GT4-M  
C10973\_GT4-W  
C10974\_GT4-VW

**PHILIPS LUMILEDS  
LUXEON REBEL ES**  
C10921\_GT4-S  
C10922\_GT4-M  
C10923\_GT4-W  
C10975\_GT4-VW



**ANNA-3**  
D= 40 MM (3UP)  
PMMA

**PHILIPS LUMILEDS  
LUXEON REBEL / REBEL ES**  
C11710\_ANNA-40-3-S  
C11711\_ANNA-40-3-M  
C11712\_ANNA-40-3-W



**ANNA-4**  
D= 40 MM (4UP)  
PMMA

**PHILIPS LUMILEDS  
LUXEON REBEL / REBEL ES**  
C11793\_ANNA-40-4-S  
C11794\_ANNA-40-4-M  
C11795\_ANNA-40-4-W



**ANNA-5**  
D= 40 MM (5UP)  
PMMA

**PHILIPS LUMILEDS  
LUXEON REBEL / REBEL ES**  
C11713\_ANNA-40-5-S  
C11714\_ANNA-40-5-M  
C11715\_ANNA-40-5-W



**ANNA-6**  
D= 40 MM (6UP)  
PMMA

**PHILIPS LUMILEDS LUXEON  
REBEL / REBEL ES**  
C11805\_ANNA-40-6-S  
C11806\_ANNA-40-6-M  
C11807\_ANNA-40-6-W



**ANNA-7**  
D= 40 MM (7UP)  
PMMA

**PHILIPS LUMILEDS  
LUXEON REBEL / REBEL ES**  
C11716\_ANNA-40-7-S  
C11717\_ANNA-40-7-M  
C11718\_ANNA-40-7-W

## MULTIPLE LENSES



**ANNA-3**  
D= 50 MM (3UP)  
PMMA

PHILIPS LUMILEDS  
LUXEON REBEL / REBEL ES  
C11606\_ANNA-50-3-S  
C11607\_ANNA-50-3-M  
C11608\_ANNA-50-3-W



**ANNA-4**  
D= 50 MM (4UP)  
PMMA

PHILIPS LUMILEDS LUXEON  
REBEL / REBEL ES  
C11799\_ANNA-50-4-S  
C11800\_ANNA-50-4-M  
C11801\_ANNA-50-4-W



**ANNA-5**  
D= 50 MM (5UP)  
PMMA

PHILIPS LUMILEDS  
LUXEON REBEL / REBEL ES  
C11612\_ANNA-50-5-S  
C11613\_ANNA-50-5-M  
C11614\_ANNA-50-5-W



**ANNA-6**  
D= 50 MM (6UP)  
PMMA

PHILIPS LUMILEDS  
LUXEON REBEL / REBEL ES  
C11811\_ANNA-50-6-S  
C11812\_ANNA-50-6-M  
C11813\_ANNA-50-6-W



**ANNA-7**  
D= 50 MM (3UP)  
PMMA

PHILIPS LUMILEDS  
LUXEON REBEL / REBEL ES  
C11670\_ANNA-7-S  
C11679\_ANNA-7-M  
C11682\_ANNA-7-W



**MARTHA / TUIJA**  
D= 50 MM (3UP)  
PMMA

PHILIPS LUMILEDS LUXEON  
REBEL / REBEL ES  
C11192\_TUIJA-3-SS  
C11193\_TUIJA-3-M  
C11191\_TUIJA-3-W



**ANGIE**  
D= 34 MM (4UP)  
PMMA

PHILIPS LUMILEDS LUXEON  
REBEL / REBEL ES  
C12285\_ANGIE-S  
C12286\_ANGIE-M  
C12287\_ANGIE-M2  
C12288\_ANGIE-W



**PENTA**  
D= 35 MM (5UP)  
PMMA

PHILIPS LUMILEDS  
LUXEON REBEL  
C10472\_RER-5-M



**TAMPA**  
D= 38 MM (7UP)  
PMMA

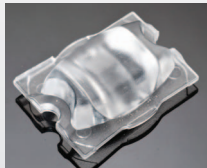
PHILIPS LUMILEDS LUXEON  
REBEL / REBEL ES  
C11232\_RER-7-MD  
C11230\_RER-7-W  
C11231\_RER-7-WW



**SANDRA**  
D= 70 MM (12UP)  
PMMA

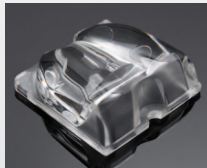
PHILIPS LUMILEDS  
LUXEON REBEL / REBEL ES  
C11814\_SANDRA-12-M  
C11700\_SANDRA-12-W

## STREET LIGHTING



**STRADA-B/B2**  
15.4 MM X 19.6 MM  
PMMA

PHILIPS LUMILEDS  
LUXEON REBEL / REBEL ES  
C10949\_STRADA-B2  
CA10950\_STRADA-B2



**STRADA-SQ-A-T**  
25 MM X 25 MM  
PMMA

PHILIPS LUMILEDS  
LUXEON M  
C12410\_STRADA-SQ-A-T  
CA12411\_STRADA-SQ-A-T



**STRADA-FW**  
15.5 MM X 19.6 MM  
PMMA

PHILIPS LUMILEDS  
LUXEON REBEL / REBEL ES  
C12086\_STRADA-FW  
CA12087\_STRADA-FW



**STRADA-C/C2**  
15.5 MM X 19.6MM  
PMMA

PHILIPS LUMILEDS  
LUXEON REBEL / REBEL ES  
C11252\_STRADA-C2  
CA11253\_STRADA-C2



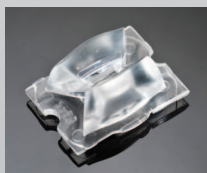
**STRADA-T-DN**  
15.5 MM X 19.6 MM  
PMMA

PHILIPS LUMILEDS  
LUXEON REBEL / REBEL ES  
C11415\_STRADA-T-DN  
CA11416\_STRADA-T-DN



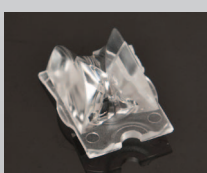
**STRADA-FT**  
15.5 MM X 19.6 MM  
PMMA

PHILIPS LUMILEDS  
LUXEON REBEL / REBEL ES  
C12049\_STRADA-FT  
CA12050\_STRADA-FT



**STRADA-DW**  
15.4 MM X 19.6 MM  
PMMA

PHILIPS LUMILEDS  
LUXEON REBEL / REBEL ES  
C11255\_STRADA-DW  
CA11256\_STRADA-DW



**STRADA-T-DW**  
15.5 MM X 19.6 MM  
PMMA

PHILIPS LUMILEDS  
LUXEON REBEL / REBEL ES  
C11425\_STRADA-T-DW  
CA11426\_STRADA-T-DW

Learn more about STRADA optics at

[http://www.ledil.com/sites/default/files/Documents/Application%20notes/Strada\\_lens\\_guide.pdf](http://www.ledil.com/sites/default/files/Documents/Application%20notes/Strada_lens_guide.pdf)





# STREET LIGHTING



**STRADA 2X2**  
50 MM X 50 MM  
PMMA

PHILIPS LUMILEDS  
LUXEON REBEL / REBEL ES  
C12361\_HB-2X2



**STRADA-T-6X1**  
25.2 MM X 120 MM  
PMMA

PHILIPS LUMILEDS  
LUXEON REBEL / REBEL ES  
C11918\_STRADA-T-6X1-DNW  
C12449\_STRADA-T-6x1-DWC

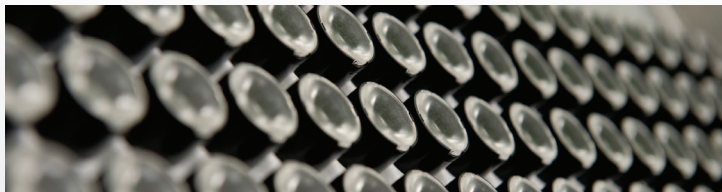


**HB-5X1**  
123 MM X 25 MM  
PMMA

PHILIPS LUMILEDS  
LUXEON REBEL / REBEL ES  
C12345\_HB-5X1

Learn more about STRADA optics at

[http://www.ledil.com/sites/default/files/Documents/Application%20notes/Strada\\_lens\\_guide.pdf](http://www.ledil.com/sites/default/files/Documents/Application%20notes/Strada_lens_guide.pdf)



#### BEAM ANGLE RANGE (FWHM)

Spot (RS, SS, S)	3-18 degrees
Medium (D, M, M2)	19 - 35 degrees
Wide (W, W2)	36 - 45 degrees
Extra Wide (WW)	46 - 63 degrees
WWW	64 -> degrees
O	Oval
REC	Rectangular

#### PREFIXES

F = FI / optic or holder

FA = FI / assembled optic+holder / tape

FN = FI / unassembled optic+holder / no tape

FX = FI / unassembled optic+holder / tape

FP = FI / assembled optic+holder/no tape

FCA = FI / assembled optic+holder / tape

FCN = FI / unassembled optic+holder / no tape

FCX = FI / unassembled optic+holder / tape

FI = Finland, Country of Origin

C = CN / optic or holder

CA = CN / assembled optic+holder / tape

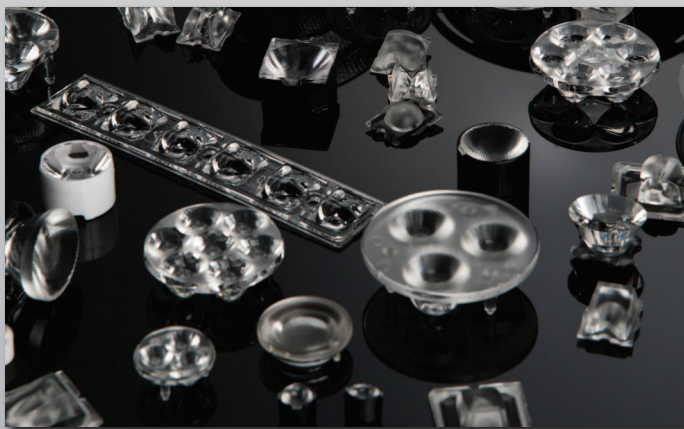
CN = CN / unassembled optic+holder / no tape

CX = CN / unassembled optic+holder / tape

CP = CN / assembled optic+holder / no tape

CN = China, Country of Origin

Qualification of LEDs with our optics occurs every day, please visit [www.ledil.com](http://www.ledil.com) for the latest information. Contact [sales@ledil.com](mailto:sales@ledil.com) if you do not see an optic qualified for your LED of choice.





## Our Company

The only true specialist in the field of secondary optics for high-power and lighting-class LEDs, LEDiL has been producing precision-engineered optics and reflectors since 2002 and now boasts nearly 1000 standard products optimized for use with LEDs produced by the world's prominent LED manufacturers.

Custom solutions are also commonly developed with minimal end-user tooling investment required. With production in Finland and China and a global network of authorized distributors, LEDiL's products are market-competitive and readily available.



## Quality

Innovative and skillful designers engineer quality into every LEDiL optic. All our lenses are produced by a unique injection molding process, which ensures high optical quality, performance, lifetime and functionality. Our optics can work in extreme conditions.