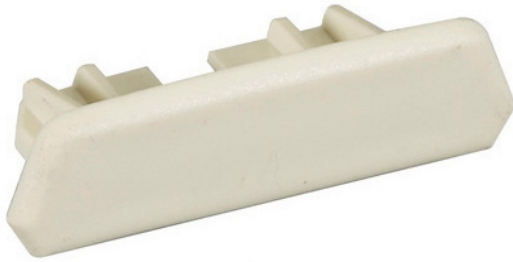


Black Box Products

Jacks, Panels, & Hardware > Raceways



2-Piece Raceway Entrance End Fitting, 400 Series (7/8" W x 7/16" D)



What's needed to feed cable from a ceiling into your BLACK BOX 2-Piece Raceway.

36865

Extended Double Diamond™ Warranty Available
(3 Additional Year)

Product Highlights

- Nonmetallic fittings to make a cable transaction from the ceiling to the first section of raceway.
- Rugged PVC.
- Guaranteed for life!

Details

Description

2-Piece Raceway Entrance End Fitting, 400 Series (7/8" W x 7/16" D)

Quick Facts

- Nonmetallic fittings to make a cable transaction from the ceiling to the first section of raceway.
- Rugged PVC.
- Guaranteed for life!

Further Details

- Distance is limited by the USB specification.
- Four cable lengths available in 4- to 16-foot (1.2- to 4.8-m) lengths.

Use these adapters to feed conduit or cable into a 400, 800, or 2300 Series 2-Piece Raceway.