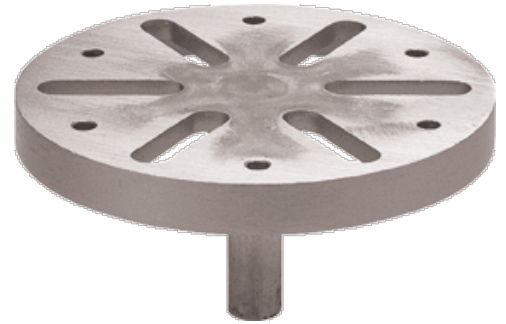


Model: 337 Fixturing Head

Exceptional choice for woodworkers and pattern makers!

Work can be attached easily to this universal Fixturing Head.

- Six slots are 0.4375" (11.1mm) wide and 1.1875" (30.2mm) long; six 0.25" (6.3mm) bolt holes are evenly spaced on a 4.375" (111.1mm) bolt circle
- Flat surface: 5.375" (136.5mm) in diameter
- Shaft is 4.125" (104.8mm) long and 5/8" (15.9mm) in diameter; compatible with all 300 series Bases
- Height (shaft to top of head): 3.75" (95.2mm), Weight: 11.5oz. (1.3kg)



In Use Example for the Fixturing Head



337 Fixturing Head being used to repair the gear box of an electric motor drive assembly



The more common use of a Model 337 Fixturing Head, wood carving.
