

## ADIS16COM1/PCBZ Breakout Board Wiki Guide OVERVIEW

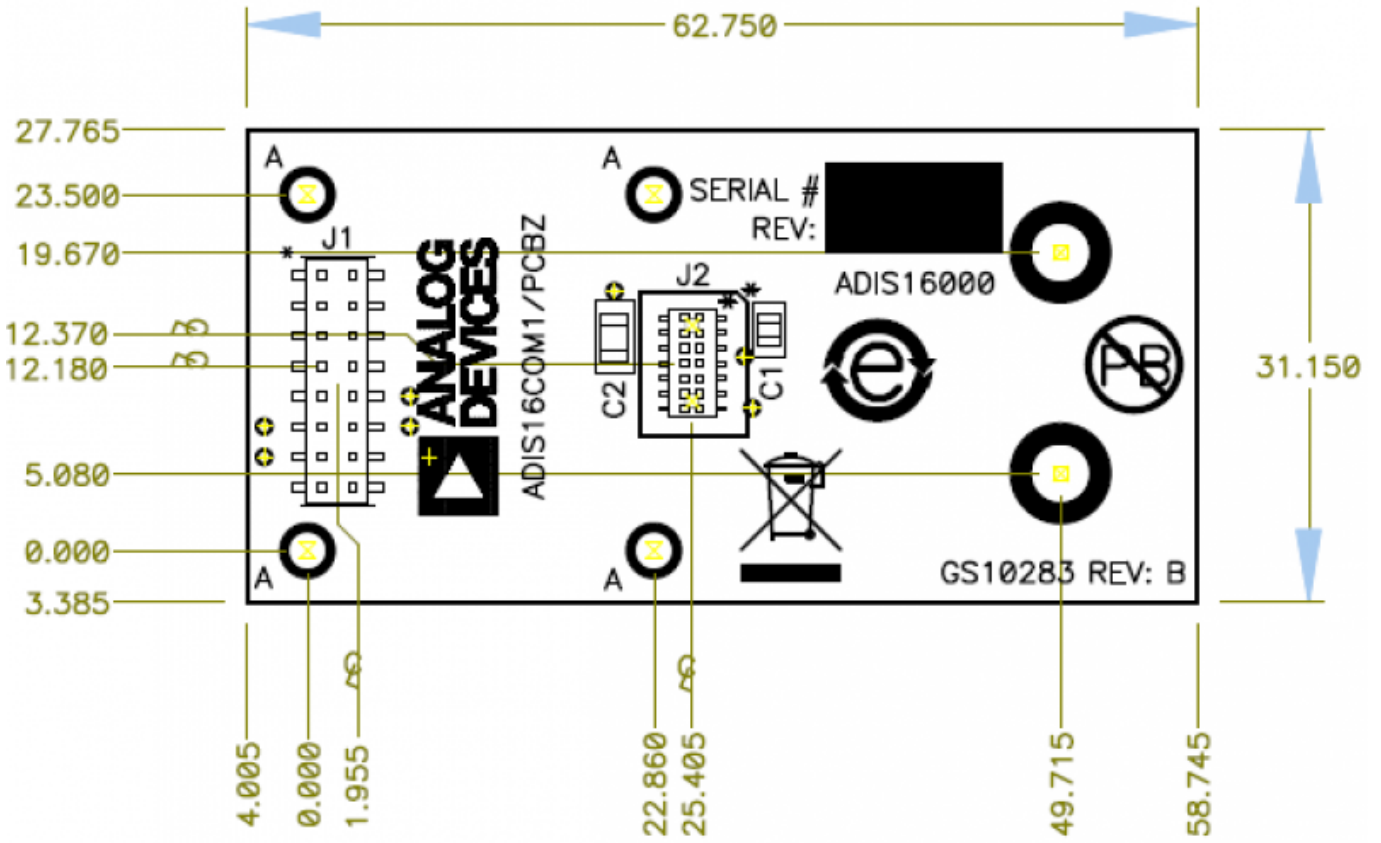
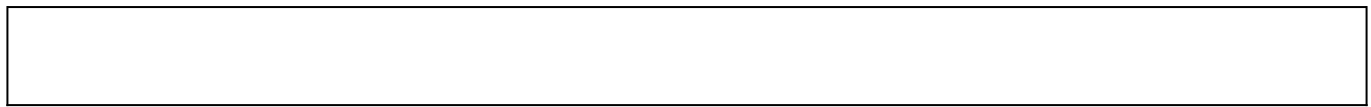
The ADIS16COM1/PCBZ provides a breakout function for the ADIS16000CMLZ, which pairs with the ADIS16229AMLZ to provide the sensor, signal processing and transceiver function for a wireless vibration sensing system.

Here is a picture of the contents that come with the ADIS16COM1/PCBZ.



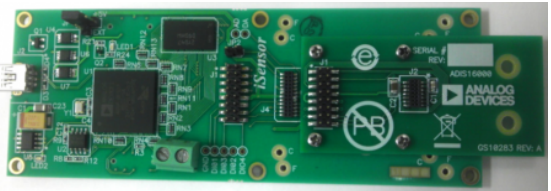
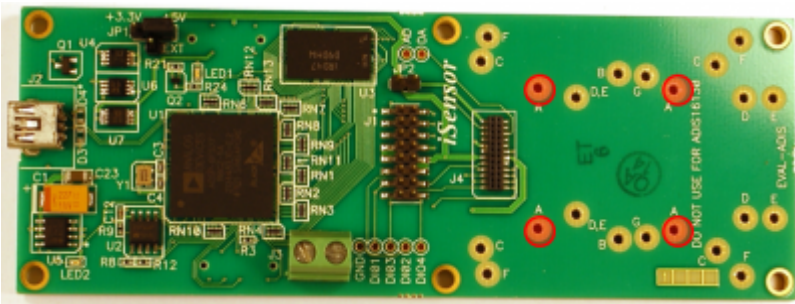
### ADIS16COM1/PCBZ MOUNTING HOLES

The ADIS16COM1/PCBZ provides 4 mounting holes that line up with mounting “A” Labeled holes on the [EVAL-ADIS](#) and supports the following products: [ADIS16000AMLZ](#) [ADIS16229AMLZ](#) products. Please see the following picture for device mounting hole locations.



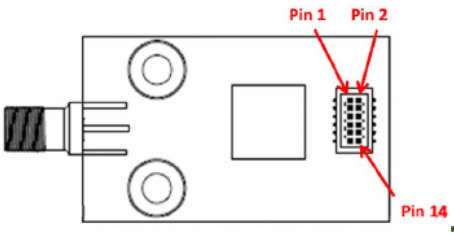
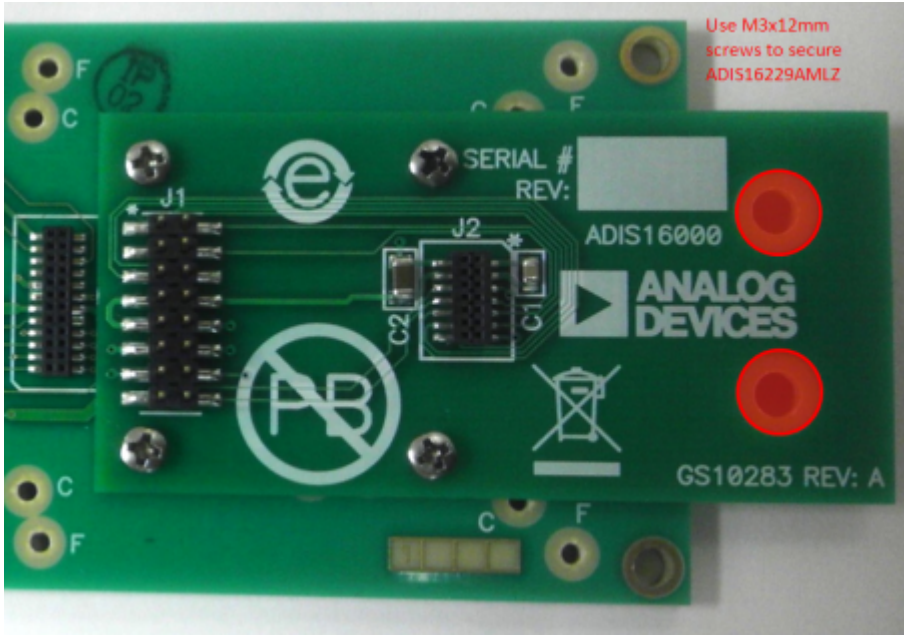
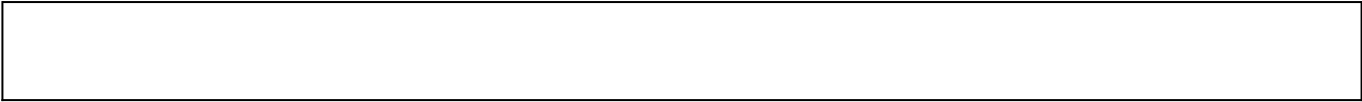
EVAL-ADIS Mounting

Use the M2x0.4x6mm machine screws (provided in pink bag ANALOGKIT2) for mounting the ADIS16COM1/PCBZ to the EVAL-ADIS and set their torque for 20 inch-ounces. The red-highlights in the top-view picture illustrate the location of the mounting holes.

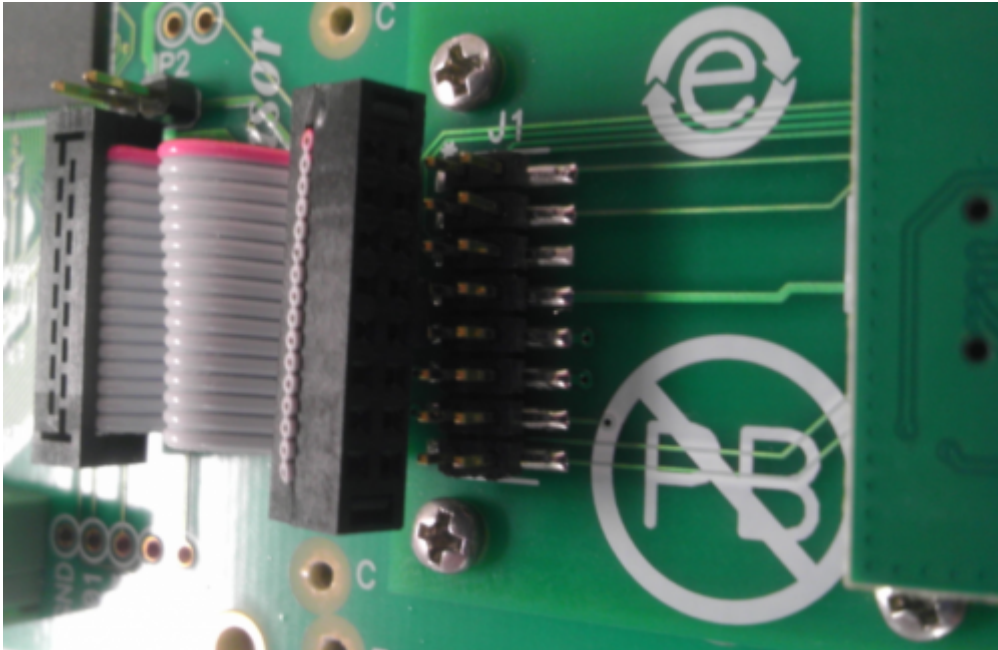


ADIS16000 Mounting on ADIS16COM1/PCBZ

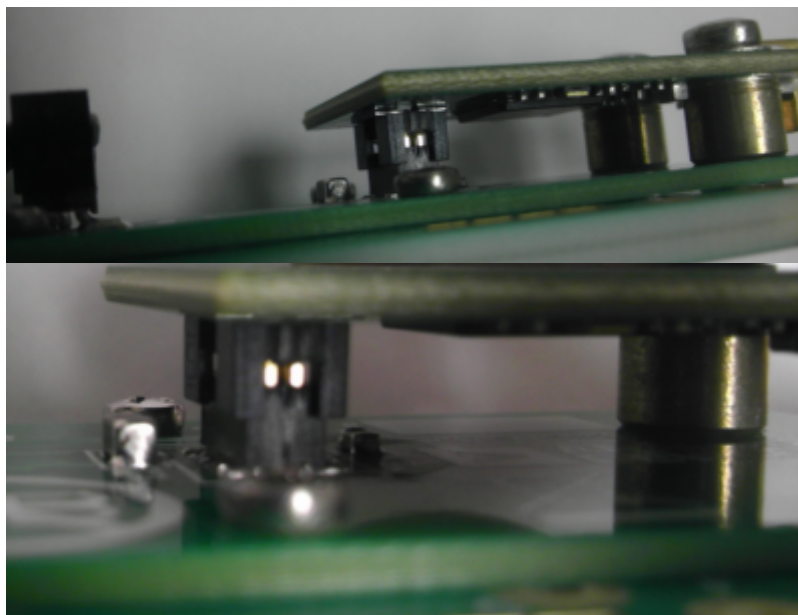
Use the M3x0.5x12mm machine screws and M3x.5x Hex nuts with the M3 washers optional(provided in pink bag ANALOGKIT2) for mounting ADIS16000AMLZ product to the ADIS16COM1/PCBZ and set their torque for 20 inch-ounces. The red-highlights in the top-view picture illustrate the location of the mounting holes for these products. Attach the 16 pin ribbon cable included with the EVAL-ADIS to connect the J1 connectors. For high-vibration environments, consider using more than 2 screws, per AN-1045



**WARNING:** Make sure that the connector pins are in alignment with J1 on the EVAL-ADIS and J1 on the ADIS16COM1/PCBZ, before pressing it into place.



Here is a close-up view, which shows a few slides of the **correct connector alignment** .





© Analog Devices, Inc. All rights reserved. Trademarks and registered trademarks are the property of their respective owners.



[www.analog.com](http://www.analog.com)