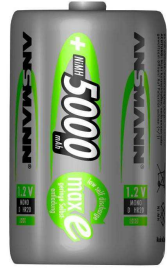
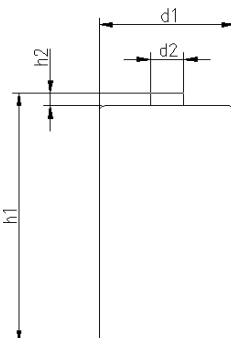


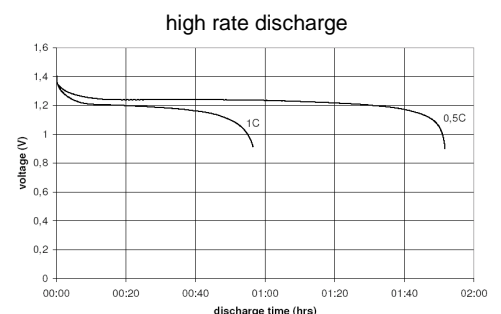
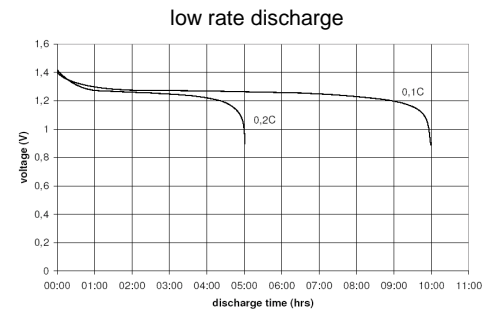
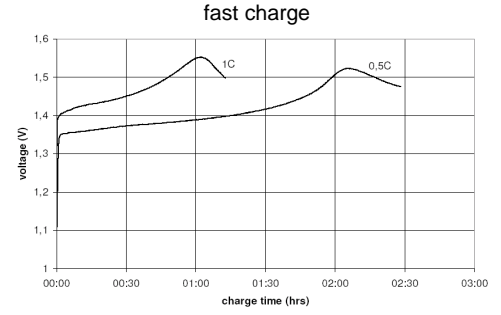
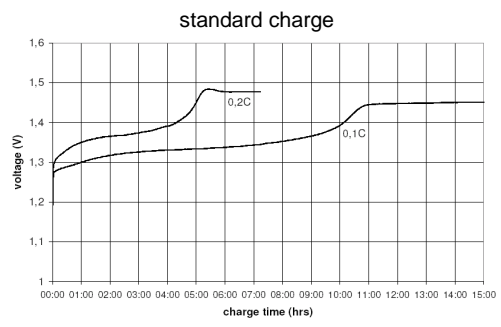
		Conditions	
cell type:		NiMH	
cell size:		D	
nominal voltage:	1.2	V	
max. charge voltage:	1.5	V	
		at standard charge (0.1C / 20°C)	
capacity			
nominal:	5000	mAh	
minimum:	5000	mAh	
	4500	mAh	
		discharge at 0.2C	
		discharge at 0.2C	
		discharge at 1C	
		1.0V end discharge voltage	
		ta: 20°C	
max. continuous discharge current:	7500	mA	
		ta: 0...45°C	
charge		current	time
standard charge:	500	mA	
quick charge:	1500	mA	
fast charge:	2500	mA	
recommended charge termination control parameters:	0...5	mV	
	0.8...1	°C	
	45...50	°C	
		- ΔV (-deltaV)	
		temperature rise per minute	
		TCO (temperature cut off)	
trickle charge current:	25...150	mA	
		(recommended)	
continuous overcharge: (less than 1 year)	≤ 500	mA	
		no conspicuous deformation	
		no leakage	
internal resistance: (impedance)	≤ 20	mΩ	
		at 1KHz	
		battery fully charged	
life expectancy:	≥ 500	cycles	
		acc. IEC standard	
self discharge			
charge retention:	≥ 80	%	
		after 12 months storage at 20°C	
initial capacity:	≥ 3500	mAh	
		within 30 days after delivery discharge at 0.2C	
ambient temperature range:	0...45	°C	
	10...40	°C	
	0...45	°C	
	- 20...65	°C	
	- 20...50	°C	
	- 20...40	°C	
	- 20...30	°C	
		standard charge	
		fast charge	
		discharge (≥1C)	
		discharge (<1C)	
		storage (≤3months)	
		storage (≤6months)	
		storage (≤24months)	

QCT1: 20/4750/20
 QCT2: 30/4500/20

mechanical specifications			
cell dimensions			
diameter d1:		32.8 - 1.0	mm
diameter d2:	max.	9.5	mm
height h1:		61.5 - 2.0	mm
height h2:	min.	1.5	mm
weight:		115 ± 5	g



Diagrams



	ANSMANN Specifications for model:	D - 5000mAh low self discharge bulk package
	data sheet no. / part no.	5030921
	supplier no.	702069
	author / date	Gramlich / 01.03.2012

Manufacturer reserves the right to alter or amend the design, model and specification without prior notice