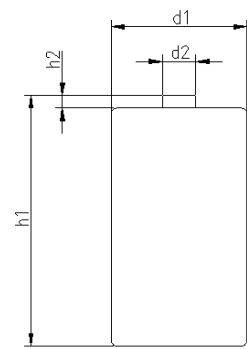
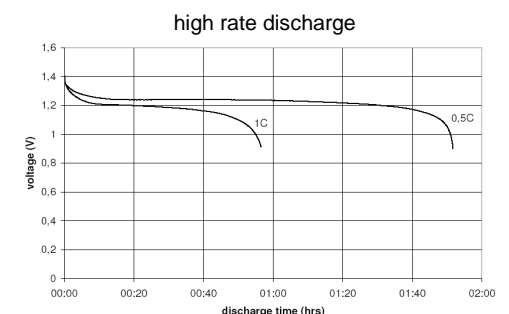
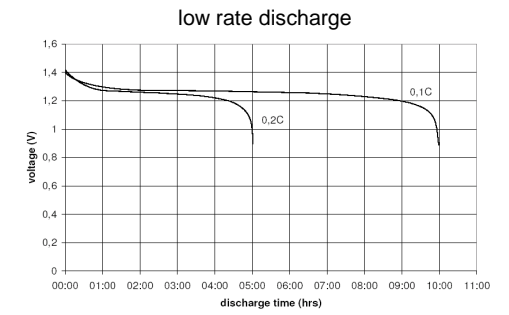
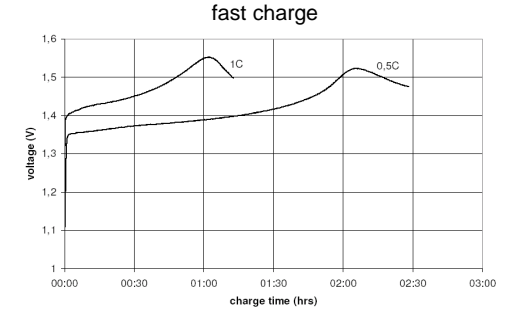
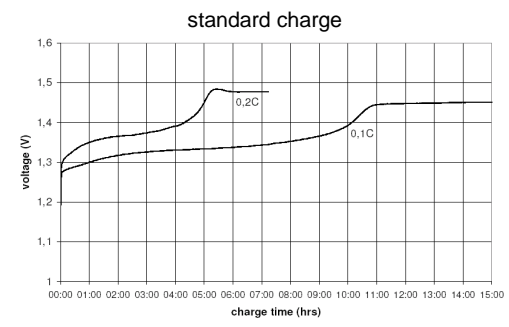


		Conditions	
<b>cell type:</b>		NiMH	
<b>cell size:</b>		D	
<b>nominal voltage:</b>	1.2	V	
<b>max. charge voltage:</b>	1.5	V	
		at standard charge (0.1C / 20°C)	
<b>capacity</b>			
nominal:	5000	mAh	discharge at 0.2C
minimum:	5000	mAh	discharge at 0.2C
	4500	mAh	discharge at 1C
			1.0V end discharge voltage
			ta: 20°C
<b>max. continuous discharge current:</b>	7500	mA	ta: 0...45°C
<b>charge</b>			
standard charge:	500	mA	14....16hrs
quick charge:	1500	mA	4hrs
fast charge:	2500	mA	2.3hrs
recommended charge termination control parameters:	0...5	mV	- ΔV (-deltaV)
	0.8...1	°C	temperature rise per minute
	45...50	°C	TCO (temperature cut off)
trickle charge current:	25...150	mA	(recommended)
continuous overcharge: (less than 1 year)	≤ 500	mA	no conspicuous deformation no leakage
<b>internal resistance:</b> (impedance)	≤ 20	mΩ	at 1KHz battery fully charged
<b>life expectancy:</b>	≥ 500	cycles	acc. IEC standard
<b>self discharge</b>			
charge retention:	≥ 80	%	after 12 months storage at 20°C
<b>initial capacity:</b>	≥ 3500	mAh	within 30 days after delivery discharge at 0.2C
<b>ambient temperature range:</b>	0...45	°C	standard charge
	10...40	°C	fast charge
	0...45	°C	discharge (≥1C)
	- 20...65	°C	discharge (<1C)
	- 20...50	°C	storage (≤3months)
	- 20...40	°C	storage (≤6months)
	- 20...30	°C	storage (≤24months)
<b>QCT1:</b>	20/4750/20		
<b>QCT2:</b>	30/4500/20		

mechanical specifications			
cell dimensions			
diameter d1:		32.8 - 1.0	mm
diameter d2:	max.	9.5	mm
height h1:		61.5 - 2.0	mm
height h2:	min.	1.5	mm
weight:		115 ± 5	g
blister card dimensions:		123 x 85	mm
blister card weight (incl. batteries):		240	g



### Diagrams



	<b>ANSMANN Specifications for model:</b>	<b>D - 5000mAh low self discharge</b>
		<b>2pcs blister package</b>
	data sheet no. / part no.	5030922
	supplier no.	702069
	author / date	Gramlich / 01.03.2012

Manufacturer reserves the right to alter or amend the design, model and specification without prior notice