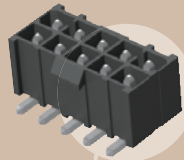


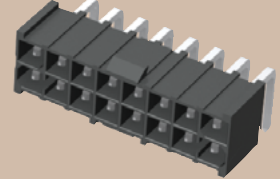


(4,19 mm) .165"

IPBT-105-H2-T-D-K



IPBT-108-H1-T-D-RA-K



IPBT-105-H1-T-D-GP

IPBT SERIES

ISOLATED TERMINAL POWER HEADER

SPECIFICATIONS

For complete specifications see www.samtec.com?IPBT

Insulator Material: Black Liquid Crystal Polymer
Contact Material: High Copper Alloy
Plating: Sn over 50µ" (1,27 µm) Ni
Operating Temp Range: -55°C to +105°C
Voltage Rating: 400 VAC/565 VDC
RoHS Compliant: Yes
Lead-Free Solderable: Yes

RECOGNITIONS

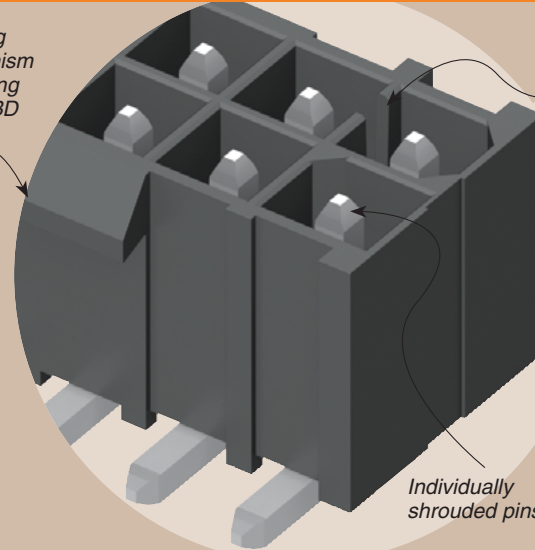
For complete scope of recognitions see www.samtec.com/quality



Mates with:
 IPBS, IPBD,
 PMSD, PMSS

IPBT/IPBS	
PINS POWERED	CURRENT RATING (PER CONTACT)
2	9.3 A
4	7.4 A
6	6.4 A
8	5.9 A
30	4.4 A

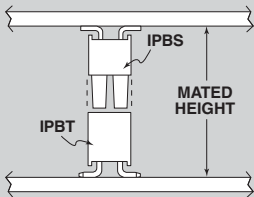
Latching mechanism for mating with IPBD Series



Keyed Polarization

• Individually shrouded contacts
 • Polarized guide post hole option

APPLICATION



IPBT/IPBS LEAD STYLE	MATED HEIGHT*
H1-01	(15,25) .600
-H2-02	(16,84) .663

*Processing conditions will affect mated height.

IPBT — 1 NO. OF POSITIONS PER ROW — LEAD STYLE — PLATING OPTION — ROW OPTION — OPTION

02, 03, 04, 05, 08, 10, 15
 (-D only)

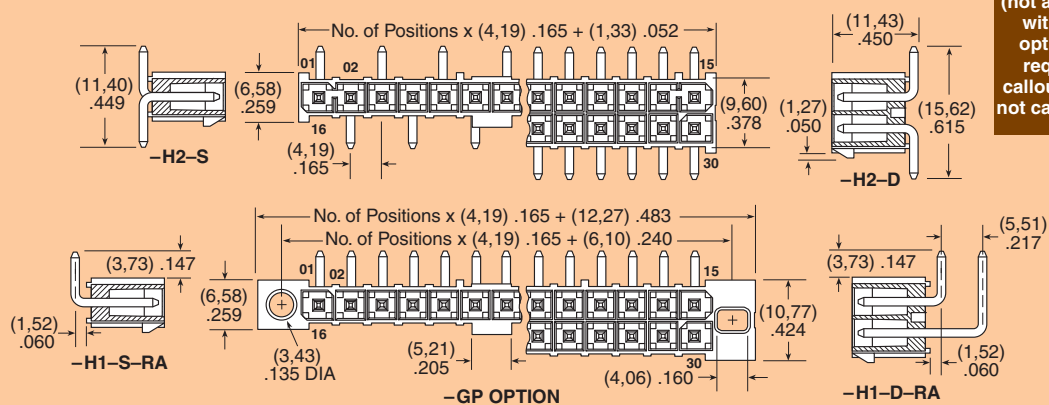
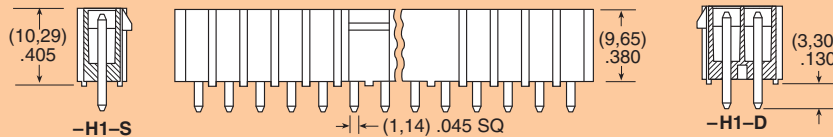
02, 03, 04, 05, 08, 10
 (-S only)
 (Standard sizes)

-H1 = Through-Hole
 -H2 = Surface Mount

-T = Matte Tin

-S = Single Row
 -D = Double Row

-RA = Right Angle (Lead Style -H1 only)
 -GP = Guide Post Holes (8 positions not available)
 -K = Keyed Polarization (not available with -GP option, is required callout if -GP not called out)



ALSO AVAILABLE (MOQ Required)

- Other sizes
 - Other lead styles
- Contact Samtec.

Note: Some lengths, styles and options are non-standard, non-returnable.

Due to technical progress, all designs, specifications and components are subject to change without notice.

WWW.SAMTEC.COM