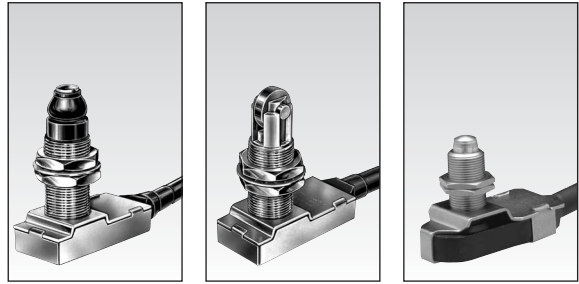


Automotive Limit Switches Series 83 731/ 83 732 / 83 733



1

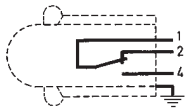
Conform to the following standards :
IEC 356.1 - EN 60204.1
NFC 20030 : Class I - 83 731 - 83 732
Class III - 83 733

Degree of protection :
IP 56 - IP 66 depending on type

Version : 1 pole

Function : 3-terminal single break two-way contact element (form C: inverter).

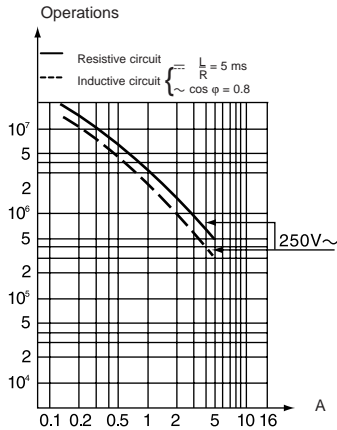
Principle :



Electrical characteristics :

Assigned operating current (Ie)
83 731 - 83 732 : 5 A 250 V
83 733 : 5 A 50 V
Thermal rating (Ith) : 12 A

Operating curve :



Connections :

PVC cable (A05 - VV - F) 0.50 m long
3 conductors cross-section 0.75 mm²
Sheathed, ext. Ø : 7.6 mm
Core connections : 1 : black (common)
2 : brown (NC)
4 : blue (NO)

Electrical protection :

Earthing terminal for version 83 731
and 83 732.

Approvals :

CSA A300.

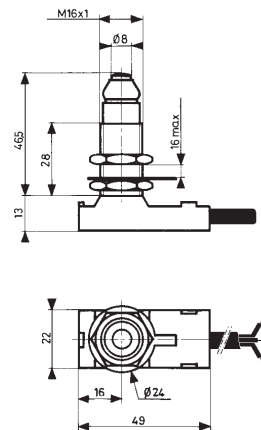
Types

| | | 83 731 3 | 83 732 3 | 83 733 3 |
|-----------------------------------|----------|-----------------|-----------------|-----------------|
| Control mechanisms | | | | |
| Top-mounted plunger | | • | | • |
| Top-mounted plunger with roller | | | • | |
| Mechanical characteristics | | | | |
| Minimum operating force | N (oz.) | 15 (53) | 15 (53) | 6 (21.2) |
| Minimum total travel force | N (oz.) | 35 (123.4) | 35 (123.4) | 25 (88.2) |
| Minimum operating travel | mm (in.) | 2 (.079) | 2 (.079) | 1.5 (.059) |
| Differential travel | mm (in.) | 0.2 (.008) | 0.2 (.008) | 0.2 (.008) |
| Max. total travel | mm (in.) | 6 (.236) | 6 (.236) | 4 (.157) |
| Mechanical life | | | | |
| Operations | | 10 ⁶ | 10 ⁶ | 10 ⁶ |
| Temperature limits | | | | |
| °C (°F) | | - 5 + 70 | - 5 + 70 | - 5 + 70 |
| Degree of protection | | | | |
| | | IP 66 | IP 66 | IP 56 |
| Weight | | | | |
| | g (oz.) | 110 (3.9) | 110 (3.9) | 70 (2.5) |

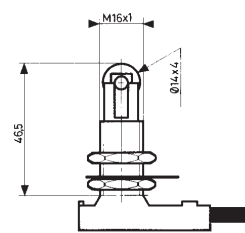
Dimensions

mm

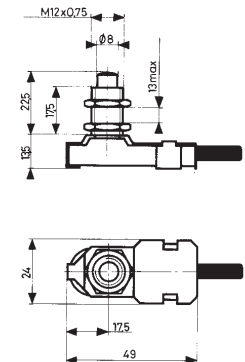
83 731 3



83 732 3



83 733 3



Other information

For other versions, functions and special contacts or special modes of operation : please consult us.

To order, specify :

| 1/2 meter cable | 1 meter cable | 2 meter cable |
|-----------------|---------------|---------------|
| 83731316 | 83731319 | 83731310 |
| 83732323 | 83732315 | 83732327 |
| 83733315 | 83733314 | 83733310 |

Standard products,
non stocked

1 Type

Example : Limit switch - 83 731 319

Products and specifications subject to change without notice.

Order/Technical Support – Tel: (800) 677-5311 / FAX: (800) 677-3865 / www.crouzet-usa.com