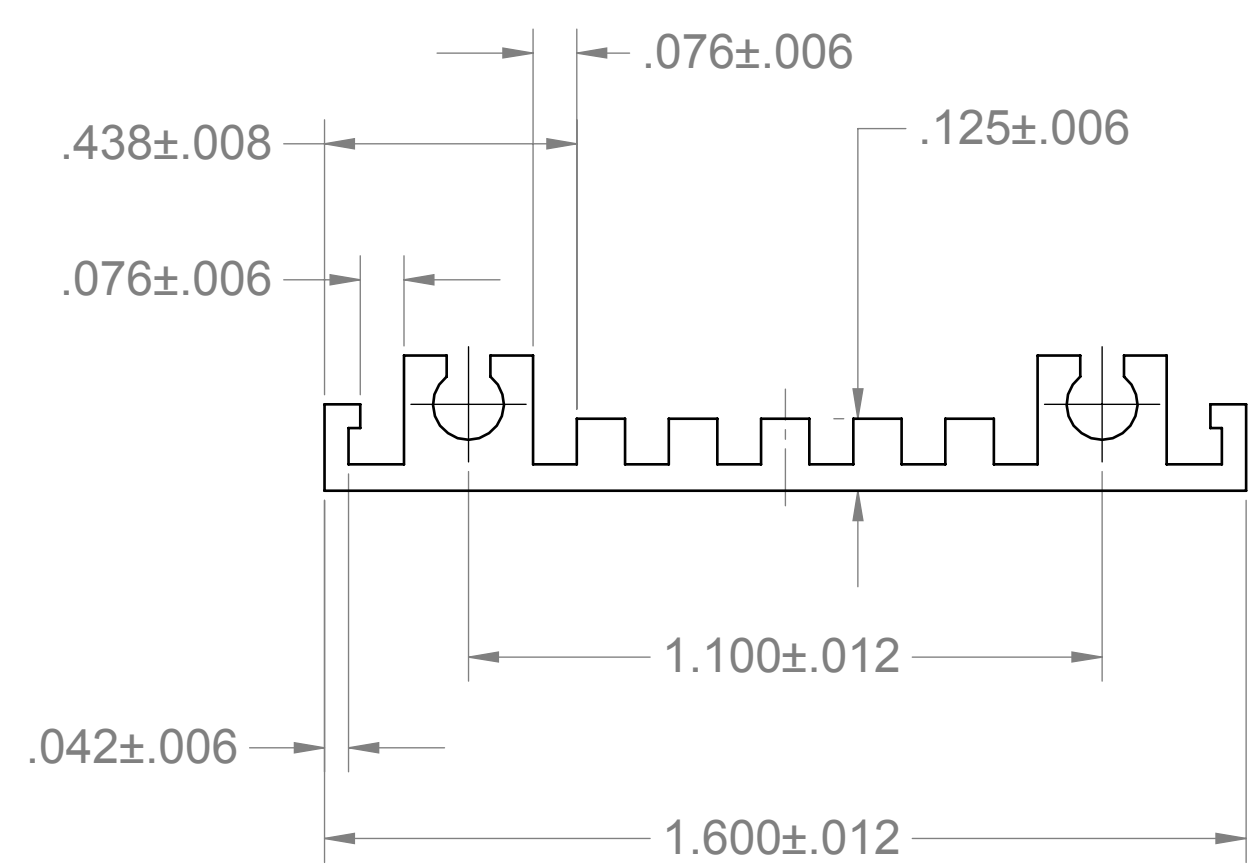
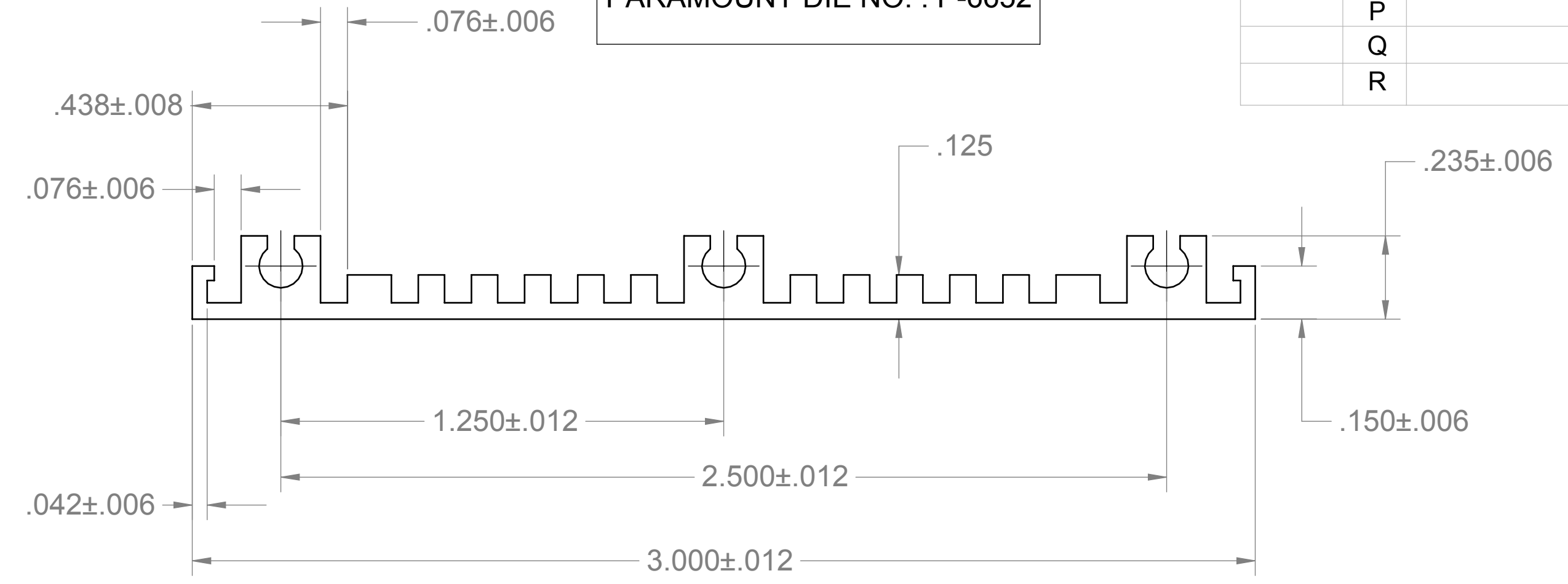




SR16-062  
PARAMOUNT DIE NO. : P-6650

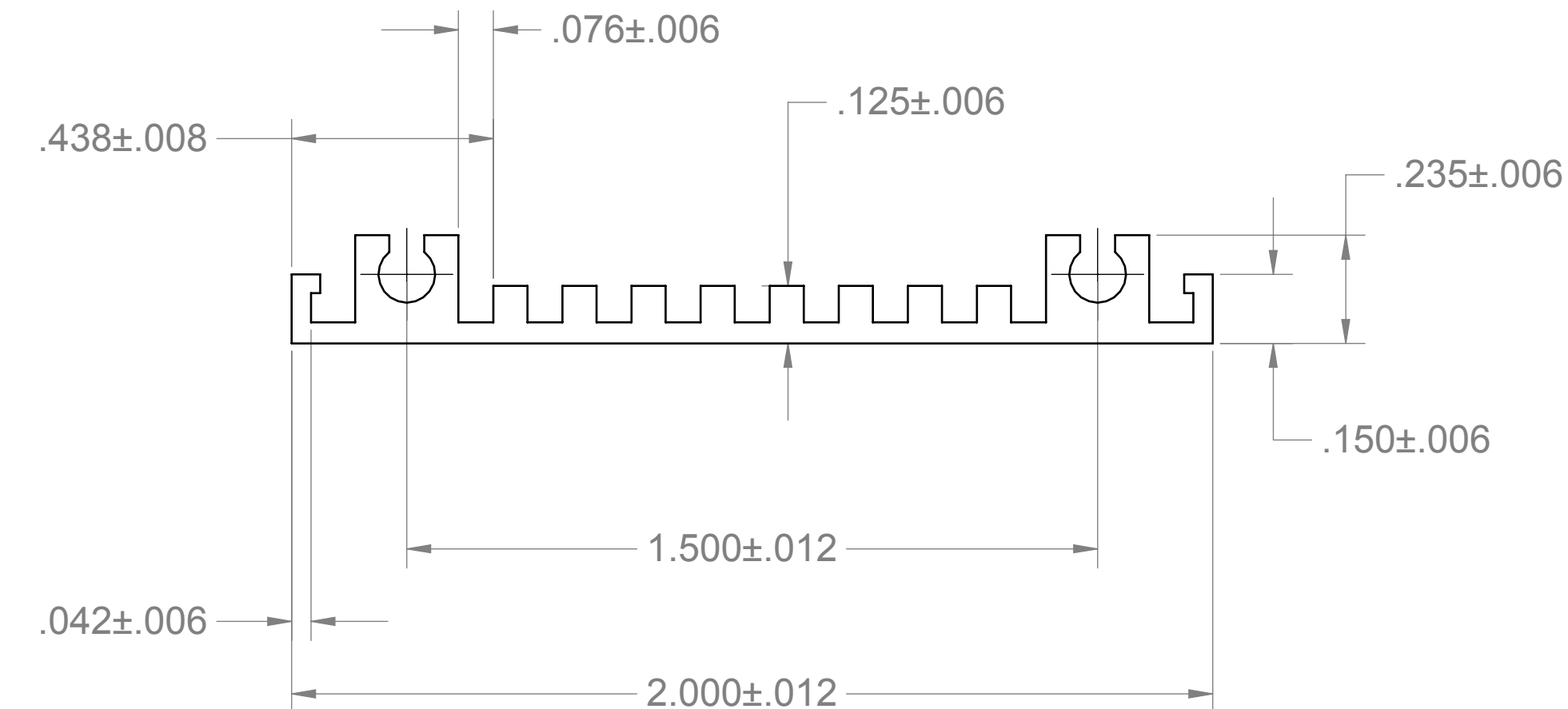


SR3-062  
PARAMOUNT DIE NO. : P-6652

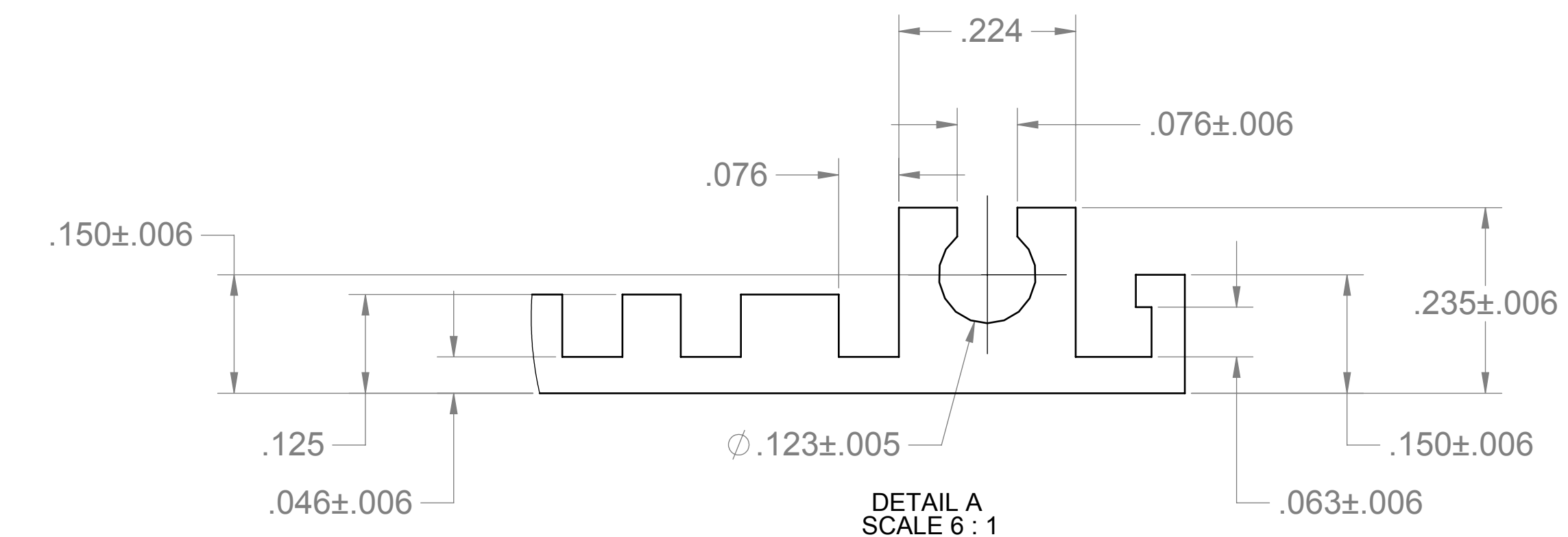
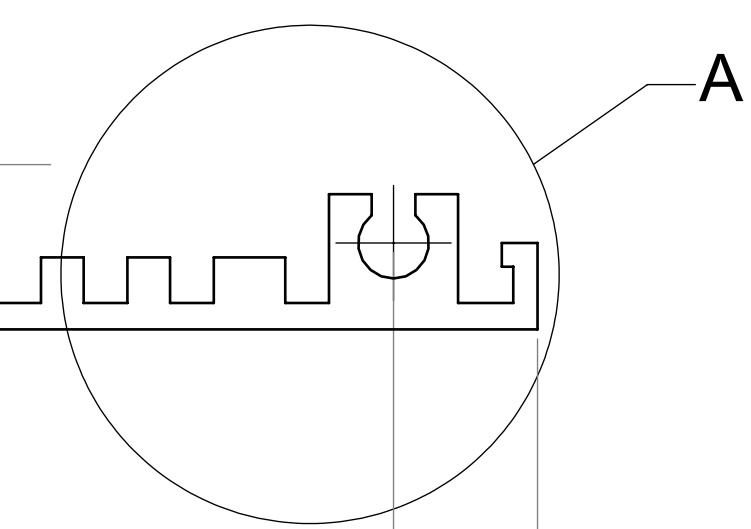
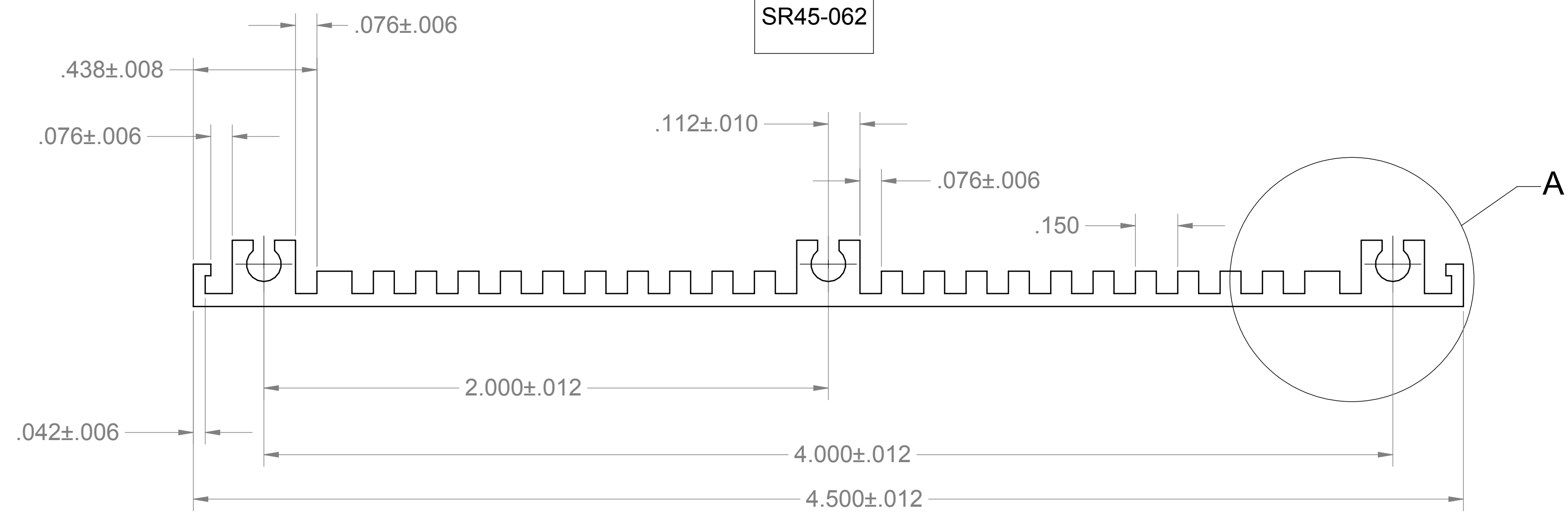


| REVISIONS |     |                  |          |          |
|-----------|-----|------------------|----------|----------|
| ZONE      | REV | DESCRIPTION      | DATE     | APPROVED |
| ALL       | N   | INC. ECO 2942    | 08/06/85 |          |
|           | P   | INC. ECO 3041    | 11/19/85 |          |
|           | Q   | EAR 1123         | 05/06/98 |          |
|           | R   | ADDED DIE NO(S). | 10/21/09 |          |

SR2-062  
PARAMOUNT DIE NO. : P-6651



SR45-062



- 10. FINISH ANOD., CLEAR TYPE II, CLASS 1, IAW MIL-A-8625
- 9. GRAIN FINISH (PRIOR TO ANOD.)
- 8. PROTECT SURFACE DURING SHIPMENT TO AVOID MARKING & SCRATCHING (MAX. WEIGHT/BUNDLE : 250 LBS.)
- 7. TWIST : 2°/FT
- 6. MAX. R. ON ALL INTERNAL & EXTERNAL CORNERS : 0.010"
- 5. SURFACE TO BE STRAIGHT WITH IN 0.012"/FT
- 4. FLATNESS 0.015"/FT IN LENGTH, 0.004"/INCH IN WIDTH
- 3. EXTRUDED LENGTH : 7' - 2'(2' IS CUTED AT EACH END FOR ANODIZING CLAMPS)
- 2. EXTRUDED FINISH : #2(60 RMS)
- 1. MATERIAL : 6063-T52

NOTES : UNLESS OTHERWISE SPECIFIED

| PART NO : | FINISH | 10 |
|-----------|--------|----|
| SR16-062  | ANOD.  |    |
| SR2-062   | ANOD.  |    |
| SR3-062   | ANOD.  |    |
| SR45-062  | NONE   |    |

PROPRIETARY AND CONFIDENTIAL  
THE INFORMATION CONTAINED IN THIS DRAWING IS THE SOLE PROPERTY OF VECTOR ELECTRONICS & TECH., INC. ANY REPRODUCTION IN PART OR AS A WHOLE WITHOUT THE WRITTEN PERMISSION OF VECTOR ELECTRONICS & TECH., INC. IS PROHIBITED.

UNLESS OTHERWISE SPECIFIED  
DIMENSIONS ARE IN INCHES  
TOLERANCES:  
DEC .X ±  
DEC .XX ±  
DEC .XXX ±.006  
FRACTIONS ±  
ANGLES ±

|          |    |
|----------|----|
| MATERIAL | 1  |
| FINISH   | 10 |

| APPROVALS | NAME    | DATE     |
|-----------|---------|----------|
| DRAWN     | TRUSHAR | 12/06/07 |
| CHECKED   |         |          |
| ENGINEER  |         |          |
| QA        |         |          |

THIRD ANGLE PROJECTION

**VECTOR** ELECTRONICS & TECHNOLOGY, INC  
11115 VANOWEN ST., NORTH HOLLYWOOD, CA 91605

## DETAIL EXTRUSION SIDE RAIL

|            |                  |              |
|------------|------------------|--------------|
| SIZE       | DWG. NO.         | REV          |
| D          | M4211D5.1        | R            |
| SCALE: 2:1 | CAGE CODE: 82893 | SHEET 1 OF 1 |