

KOMPAKT

The complete Signal Tower Solution

Signal Towers · completely pre-assembled · KOMPAKT 71



KOMPAKT 71

With the help of these compact LED signal towers two or three defined status warnings can be displayed with only one signal device. The tower is very economical due to the long life duration of up to 50,000 hours and low current consumption.

Also available with USB Interface



The advantages at a glance



- ✓ Completely pre-assembled LED Signal Tower
- ✓ Simplified ordering - the complete tower can be ordered with just one number
- ✓ Life duration of up to 50,000 hours
- ✓ High protection rating IP 65



- Completely pre-assembled
- Three colour combinations
- 70 mm diameter



Base with tube (accessory)

Life duration
up to 50,000 hrs

TECHNICAL SPECIFICATIONS:

| | |
|---------------------------------|---|
| Dimensions (Ø x Height): | 2 tier: 70 x 140 mm 3 tier: 70 x 175 mm |
| Housing: | Housing parts: PC Terminal element: PA fibreglass, high-impact |
| Fixing: | Base/Bracket mounting Tube mounting (accessory) |
| Connection: | Screw terminal max. 2.5 mm ² |
| Cable entry: | Cable diameter max. 14 mm |
| Current consumption: | 40 mA per tier |

ORDER SPECIFICATIONS:

KOMPAKT 71

| | | | |
|--------|------------------|-----------------------|------------|
| | | Mounting | 24 V DC |
| 2 tier | red/green | Base/bracket mounting | 697 010 55 |
| | red/green | Tube mounting | 697 410 55 |
| 3 tier | red/yellow/green | Base/bracket mounting | 697 000 55 |
| | red/yellow/green | Tube mounting | 697 400 55 |

KOMPAKT 71 with negative logic (common +)

| | | | |
|--------|------------------|----------------------|------------|
| | | Mounting | 24 V DC |
| 3 tier | red/yellow/green | Base/bracket mouting | 697 100 55 |
| | red/yellow/green | Tube mounting | 697 500 55 |

ACCESSORIES:

see page 79

TECHNICAL DIAGRAMS:

see page 312

See note on page 347

| | | | | | | |
|----|-----|-----------------|-----------------|------|----------------|-----|
| CE | EAC | 2 tier 170 g | 3 tier 200 g | IP65 | +50°C -20°C | PLC |
|----|-----|-----------------|-----------------|------|----------------|-----|



LED Signal Tower KOMPAKT 71 with USB Interface



Completely pre-assembled
signal tower with integrated
USB terminal element

- Completely pre-assembled signal tower with integrated USB terminal element
- No additional voltage supply or hardware is required
- Actuation via a DLL (Dynamic Link Library) or VCP (Virtual-COM-Port)
- No additional power supply or hardware necessary
- Direct triggering of signal tower via USB Interface

i TECHNICAL SPECIFICATIONS:

Life duration
up to 50,000 hrs

| | |
|--------------------------|--|
| Dimensions (Ø x Height): | 70 mm x 175 mm |
| Housing: | Housing parts: PC Terminal element: PA-GF, high-impact |
| Fixing: | Tube mounting (accessory) |
| Connection: | Via USB |
| Power supply: | Via USB (5 V DC) |
| Assembly: | Assembly includes installation software, drivers, handbook and USB connection cable (length 1.8 m) |
| Suitable for: | Windows 2000 service pack 4, Windows XP, Windows Vista or Windows 7. Also for Windows Server and Windows CE operating systems. |

🛒 ORDER SPECIFICATIONS:

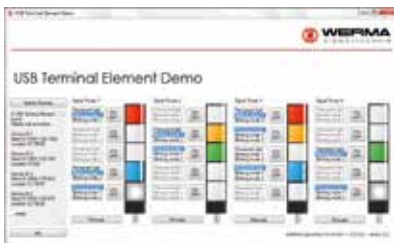
3 tier red/yellow/green **697 430 53**

🏠 ACCESSORIES:

| | |
|--------------------------------------|-------------------|
| Base with integrated tube | 975 840 10 |
| Base with tube, metal | 975 840 91 |
| Tube Ø 25 mm, all anodized aluminium | |
| 100 mm long | 975 845 10 |
| 250 mm long | 975 840 25 |
| 400 mm long | 975 840 40 |
| 600 mm long | 975 840 60 |
| 800 mm long | 975 840 80 |
| 1000 mm long | 975 840 03 |

📐 TECHNICAL DIAGRAMS:

see page 312

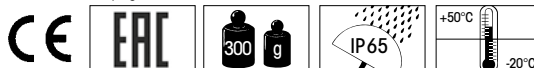


The user-friendly demonstration
software is included in the assembly



Direct triggering via USB interface
(assembly without laptop
and accessories)

See note
on page 347



Accessories for KOMPAKT 71



ORDER SPECIFICATIONS ACCESSORIES KOMPAKT 71:

| | | |
|---|--|------------|
|  | Contact box for Câble exit at side, with mounting material | 975 840 01 |
|  | Contact box with magnetic base and Câble exit at side | 975 840 04 |
|  | Bracket for tube mounting with Câble gland | 960 000 01 |
|  | Bracket for surface mounting with Câble gland | 960 698 05 |
|  | Bracket for base mounting with concealed Câble entry, incl. rubber seals | 960 000 14 |
|  | Bracket for 1-sided mounting, incl. rubber seals | 975 840 85 |
|  | Bracket for 2-sided mounting, incl. rubber seals | 975 840 86 |
|  | NEW Corner fixing bracket | 960 000 41 |



TECHNICAL DIAGRAMS:

see page 327 onwards





Accessories for KOMPAKT 71



ORDER SPECIFICATIONS ACCESSORIES KOMPAKT 71:

Tube with clamp, Ø 25 mm
250 mm long, with Câble gland **960 000 18**



Tube Ø 25 mm, all anodized aluminium

| | |
|--------------|-------------------|
| 100 mm long | 975 845 10 |
| 250 mm long | 975 840 25 |
| 400 mm long | 975 840 40 |
| 600 mm long | 975 840 60 |
| 800 mm long | 975 840 80 |
| 1000 mm long | 975 840 03 |

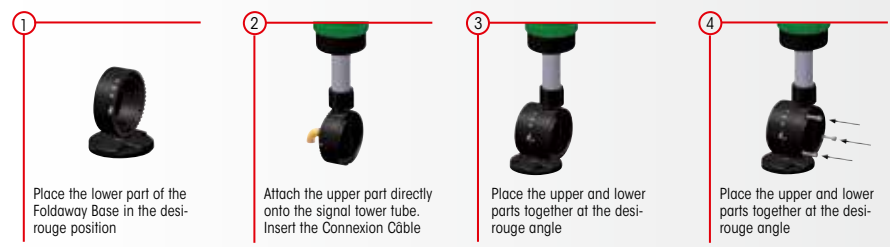
Utility model approved



Foldaway Base incl. rubber seals, suitable for tube, Ø 25 mm, all anodized aluminium (not included in assembly) **960 000 30**

Dimensions (Ø x Height): 70 mm x 117 mm
Material: PA-GF
Câble diameter: max. 14 mm
Assembly: incl. rubber seals
Fixing: Vertical, horizontal, Positioning in 7.5° steps

QUICK AND SIMPLE MOUNTING:



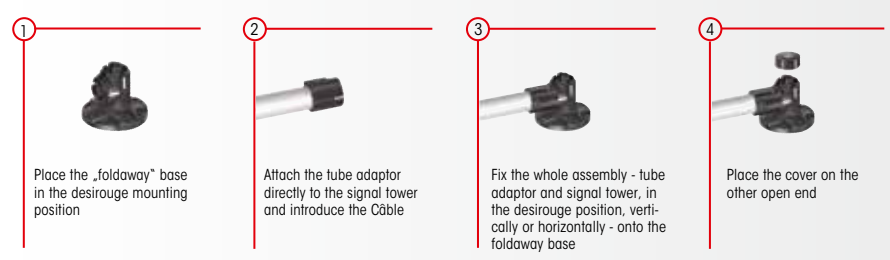
NEW



Foldaway Base incl. rubber seals, suitable for tube, Ø 25 mm, all anodized aluminium (not included in assembly) **960 009 12**

Dimensions (Ø x Height): 70 mm x 85 mm
Material: PA-GF
Câble diameter: max. 8 mm
Assembly: incl. rubber seals
Fixing: Vertical, horizontal, Positioning in 0° and 90°

QUICK AND SIMPLE MOUNTING:





ORDER SPECIFICATIONS ACCESSORIES KOMPAKT 71:



Tube Ø 25 mm, plastic for mounting the Terminal Element directly on the Foldaway Base

960 000 31



Base for tube mounting Ø 25 mm, plastic, incl. rubber seal

975 840 90



Base for tube mounting Ø 25 mm, metal, incl. rubber seal, recommended for tube lengths of 400 mm and longer

975 840 91



Base with integrated tube, Ø 25 mm, 110 mm long, plastic, incl. rubber seal

975 840 10



Adaptor for tube mounting, Ø 25 mm / 1/2" NPT thread

975 840 02



Adaptor for single hole mounting Ø 25 mm, M18

960 000 25



Cable gland for surface mounting M16 x 1.5 mm

960 000 04



TECHNICAL DIAGRAMS:

see page 327 onwards