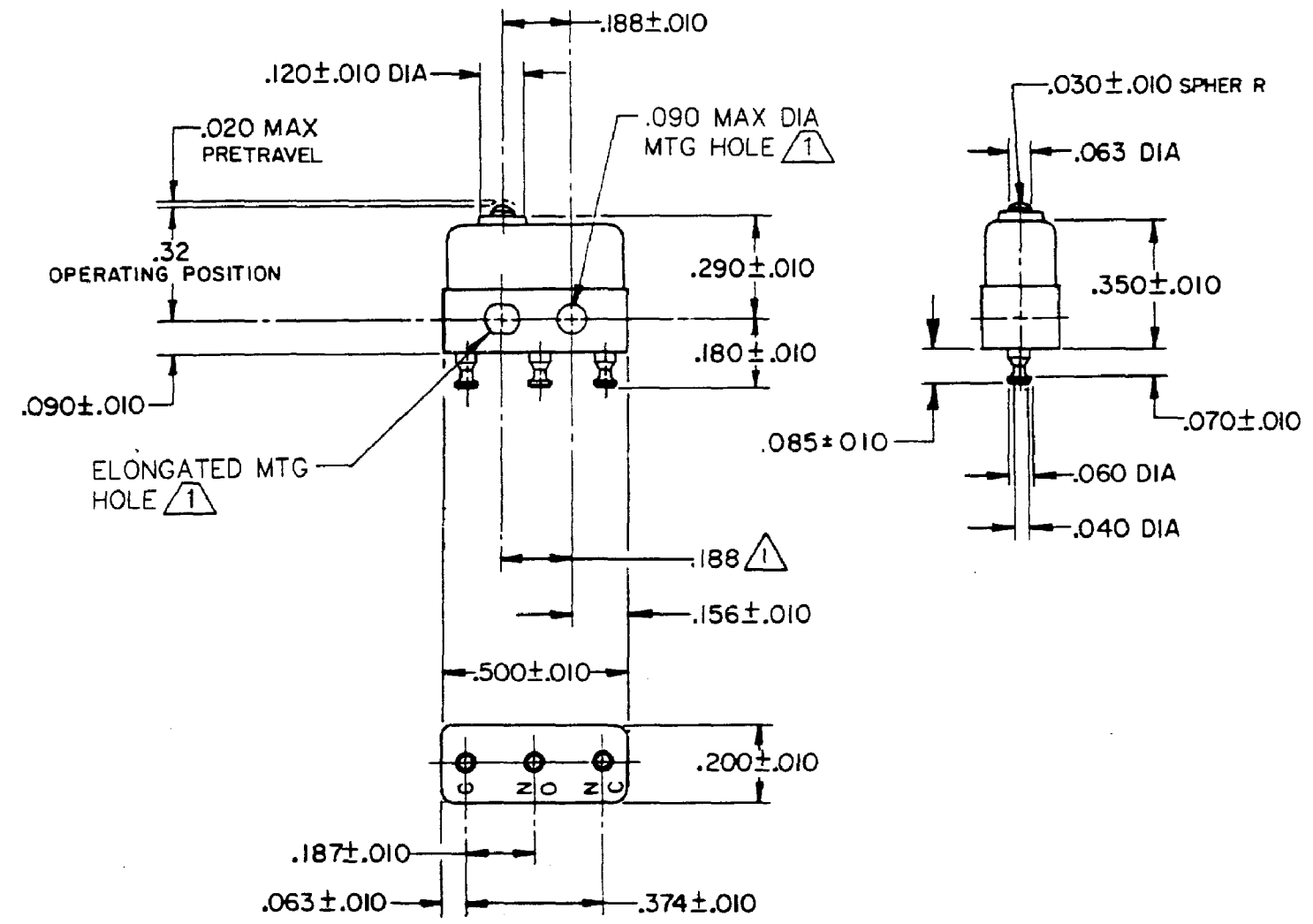
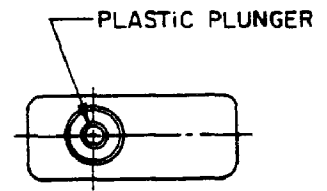


HONEYWELL
PART NUMBER
1SX1-T-C
PRODUCT CODE
VDA0195

REV	DOCUMENT	CHANGED BY	CHECK
5	0038446	KVB 20MAY08	BLR



- NOTES
- 1 MOUNTING HOLES WILL ACCEPT PINS OR SCREWS OF .087 MAX DIA ON .188 ± .002 CENTERS
 - 2 - TERMINALS ARE PLATED FOR SOLDERING
 - 3 - SWITCH WILL WITHSTAND TEMPERATURE OF 250°F
 - 4 - SORT SWITCHES INTO GROUPS BY OPERATING POSITION. EACH GROUP SHALL CONSIST OF .003 INCREMENTS AS FOLLOWS: (A=.305-.308, B=308-.311, C=.311-.314 ... J=.332-.335)
 - 5 - GROUPS MAY OVERLAP BY .001 DUE TO VARIATION IN SWITCH AND MEASURING DEVICES. GROUPS WILL VARY IN SIZE

RELEASE NO.	PR-15679
REPLACES	-

CHARACTERISTICS	
OPERATING FORCE	5 OZ MAX
RELEASE FORCE	1 OZ MIN
DIFFERENTIAL TRAVEL	.005 MAX
OVERTRAVEL	.004 MIN

ELECTRICAL DATA		
CONTACT ARRANGEMENT SPDT		
28 VOLTS DC RATING		
	SEA LEVEL	50,000 FT
INDUCTIVE	4 AMP	2.5 AMP
RESISTIVE	7 AMP	7 AMP
MAXIMUM INRUSH 24 AMP		
APPROVALS	KEMA, CE	7A 250V ~ T125 5E4
	UL, CSA	7A 250 VAC

DESIGN UNITS: INCH
TOLERANCES UNLESS NOTED:
NO PLACE X ±
ONE PLACE .X ±
TWO PLACE .XX ±
THREE PLACE .XXX ±
FOUR PLACE .XXXX ±
ANGLES ±
THIRD ANGLE PROJECTION

DRAWN	SPK	26NOV07
CHECK	RJ	26NOV07
THIS DRAWING COVERS A PROPRIETARY ITEM AND IS THE PROPERTY OF HONEYWELL. THIS DRAWING IS NOT TO BE COPIED OR USED WITHOUT THE PERMISSION OF HONEYWELL.		
INTERPRET PER ANSI Y14.5M-1982 OTHER HONEYWELL ENGINEERING STANDARDS MAY APPLY		
RASTER		

Honeywell			
TITLE SWITCH - BASIC			
SIZE	TYPE	DRAWING NAME	REV
B	I	1SX1-T-C	5
SCALE	-	WEIGHT: .003 LB MAX	SHEET 1 OF 1