

# Most Popular Standard Connectors

Glass Filled Nylon Range -29 to 220°C (-20 to 425°F)

Liquid Crystal Polymer Range -29 to 260°C (-20 to 500°F)

## OSTW/HSTW Basic Pair

- ✓ Universal Female "Fits All" Design
- ✓ Hollow-Pin Construction
- ✓ Color-Coding for ANSI or IEC
- ✓ Captive Cover Screws
- ✓ Accepts Stranded or Solid Wire up to Size 14 AWG
- ✓ Quick Connect Contact Washers
- ✓ Internal Wire Divider
- ✓ Write-On Window
- ✓ Combination Phillips/Slot Screws

**Universal Female Connector**



Removable/reversible write-on window at no extra charge

Shown larger than actual size.

OSTW -29 to 220°C	HSTW -29 to 260°C

OSTW — Glass-Filled Nylon -29 to 220°C  
HSTW — Cadmium Free Liquid Crystal Polymer -29 to 260°C  
Shown smaller than actual size

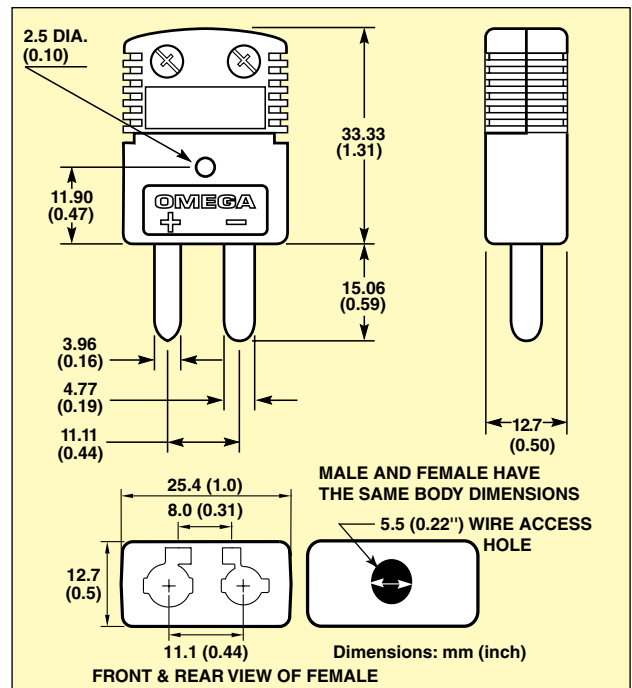


Tapered point male contacts.

Silicon strain relief grommet at no extra charge.



Shown actual size.



We make running changes when technical advances allow. Check at time of ordering for additional features.

**Also Available!**

Transmitters and Ferrite Cores for EMI Protection

STCTX built-in 4 to 20 mA transmitter.

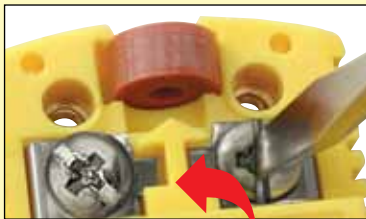
**PATENTED**

PCLM-FT cable clamp with ferrite core for EMI protection. Connector sold separately.

Quick connect contact washers. additional washers available, order CW-OST-20, pkg of 20, or CW-OST-100, pkg of 100.



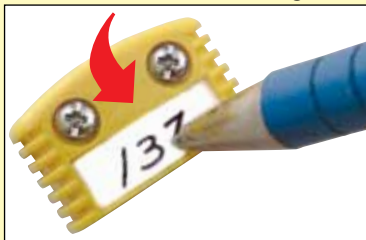
Silicon strain relief grommet at no extra charge.



Internal wire divider

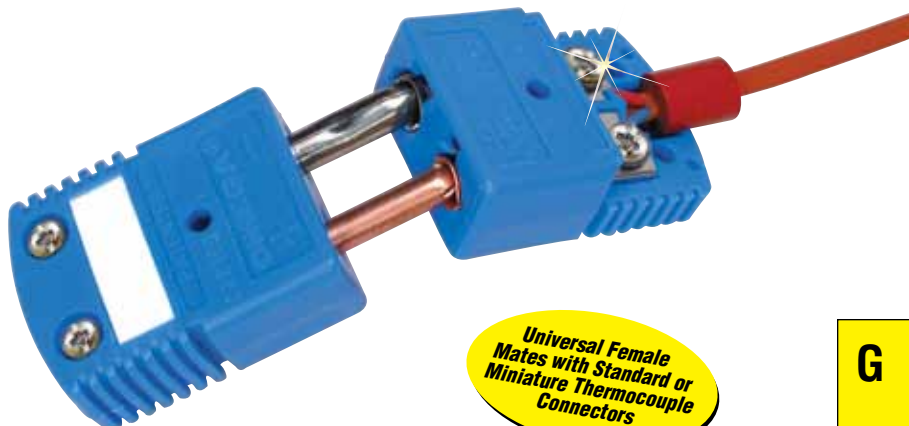
Silicon strain relief grommet at no extra charge. Additional grommets, order SR-OST-10, pk of 10, SR-OST-100, pk of 100

Removable/reversible write-on window at no extra charge.

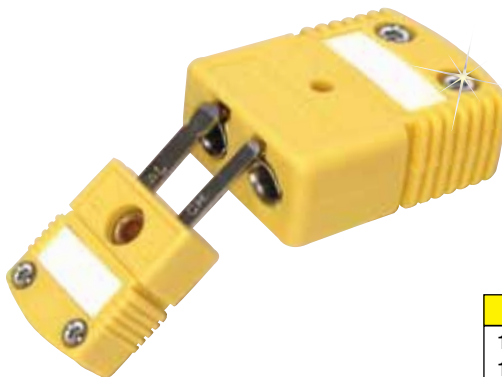


Additional write-on windows available, order WCP-L, pkg of 5.

Captive cover screws at no extra charge.



Universal Female Mates with Standard or Miniature Thermocouple Connectors



**Discount Schedule**

1-10	Net
11-49	5%
50-99	10%
100-999	15%
1000-4999	20%
5000 and over	25%

**To Order Visit [newportUS.com/HST\\_W](http://newportUS.com/HST_W) for Pricing and Details**

Alloy Code†	Compensating Alloy Used in Connector		ANSI Color Code	Glass-Filled Nylon Model Number		Liquid Crystal Polymer Model Number	
	+	—		Male*	Uni-Female	Male*	Uni-Female
	<b>K</b>	CHROMEALLOY®		ALOMEGA®	Yellow	<b>OSTW-K-M</b>	<b>OSTW-K-F</b>
<b>T</b>	Copper	Constantan	Blue	<b>OSTW-T-M</b>	<b>OSTW-T-F</b>	<b>HSTW-T-M</b>	<b>HSTW-T-F</b>
<b>J</b>	Iron	Constantan	Black	<b>OSTW-J-M</b>	<b>OSTW-J-F</b>	<b>HSTW-J-M</b>	<b>HSTW-J-F</b>
<b>E</b>	CHROMEALLOY®	Constantan	Purple	<b>OSTW-E-M</b>	<b>OSTW-E-F</b>	<b>HSTW-E-M</b>	<b>HSTW-E-F</b>
<b>R/S</b>	Copper	RNX/SNX	Green	<b>OSTW-R/S-M</b>	<b>OSTW-R/S-F</b>	<b>HSTW-R/S-M</b>	<b>HSTW-R/S-F</b>
<b>C</b>	CPX	CNX	Red	<b>OSTW-C-M</b>	—	<b>HSTW-C-M</b>	—
<b>U</b>	Copper	Copper	White	<b>OSTW-U-M</b>	<b>OSTW-U-F</b>	<b>HSTW-U-M</b>	<b>HSTW-U-F</b>
<b>N</b>	OMEGA-P®	OMEGA-N®	Orange	<b>OSTW-N-M</b>	<b>OSTW-N-F</b>	<b>HSTW-N-M</b>	<b>HSTW-N-F</b>

\* To order a pair replace suffix "M" with "MF" for a connector pair.

\*\* To order solid pin male connectors add suffix "-S" to the model number for additional cost.

† J, K, T, E, R, S and B are ANSI designations. OMEGALLOY® (OMEGA-P® & OMEGA-N®) is generically known as Nicrosil-Nisil.

ANSI color coded models shown.

Note: Type U (uncompensated) connectors are used with Type B thermocouples (Pt/6%Rh-Pt/30%Rh)

Ordering Example: **OSTW-K-MF-S**, glass-filled nylon connector pair with solid pins.