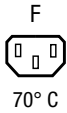




Snap-In Version



**Description**

- Panel Mount:  
Snap-in version from front side
- 1 Function:
- Connector, Pin temperature 70 °C, Protection class I
- Solder terminals or quick connect terminals

**Approvals**

- VDE Certificate Number: 40017345
- UL File Number: E103791
- CCC File Number: 2012010204546362

**Other versions on request**

- Other panel thickness
- Types for rivet mounting available upon request
- Types for enhanced glow wire test requirements acc. IEC 60695-2-12 and -13 for the use in unattended household equipment acc. IEC 60335-1
- Variant with notch for V-Lock mating Cordsets

**Weblinks**

[pdf-datasheet](#), [html-datasheet](#), [General Product Information](#), [Approvals](#), [CE declaration of conformity](#), [RoHS](#), [CHINA-RoHS](#), [Mating Connectors](#), [e-Shop](#), [SCHURTER-Stock-Check](#), [Distributor-Stock-Check](#), [CAD-Drawings](#), [Accessories](#), [Wire Harnessing](#), [Detailed request for product](#)

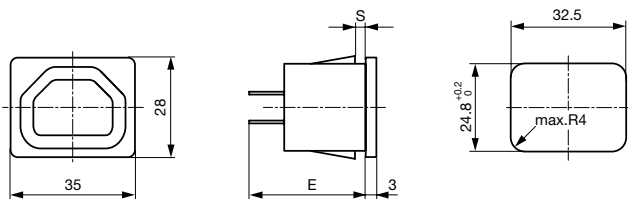
Newly available variants corresponding to V-Lock mating cordset. The connector is equipped with a notch intended for use with the latching cordset. The cord latching system prevents against accidental removal of the cordset.

**Technical Data**

|                           |   |                  |  |
|---------------------------|---|------------------|--|
| Ratings IEC               | 10A / 250VAC; 50Hz  | Appliance Outlet | F acc. to IEC 60320,   |
| Ratings UL/CSA            | 15A / 250VAC; 60Hz  |                  | UL 498, CSA C22.2 no. 182.3 (for cold conditions) pin-temperature 70 °C, 10A, Protection Class I |
| Dielectric Strength       | > 2 kVAC between L-N<br>> 2 kVAC between L/N-PE<br>(1 min/50Hz)   |                  |  |
| Allowable Operation Temp. | -25 °C to 70 °C   |                  |  |
| Degree of Protection      | from front side IP 30 acc. to IEC 60529                           |                  |  |
| Protection Class          | Suitable for appliances with protection class I acc. to IEC 61140 |                  |  |
| Terminal                  | Solder terminals or quick connect terminals                       |                  |  |
| Panel Thickness s         | Snap-in: 1/1.2/1.5/2/2.5/3 mm                                     |                  |  |
| Material: Housing         | Thermoplastic, black, UL 94V-0                                    |                  |  |

**Dimensions**

6600-4



- E: Solder terminals: 24.1 mm
- E: Quick connect terminals 4.8 x 0.8 mm: 26.5 mm
- E: Quick connect terminals 6.3 x 0.8 mm: 27.5 mm

## All Variants

| Panel mounting | Panel Thickness<br>s [mm] | Terminal                             | Order Number |   |
|----------------|---------------------------|--------------------------------------|--------------|---|
| Snap-in        | 1                         | Quick connect terminals 4.8 x 0.8 mm | 6600.4210    | ■ |
| Snap-in        | 1                         | Quick connect terminals 4.8 x 0.8 mm | 6600.4210.21 |   |
| Snap-in        | 1.2                       | Quick connect terminals 4.8 x 0.8 mm | 6600.4212    |   |
| Snap-in        | 1.2                       | Quick connect terminals 4.8 x 0.8 mm | 6600.4212.21 |   |
| Snap-in        | 1.5                       | Quick connect terminals 4.8 x 0.8 mm | 6600.4215    | ■ |
| Snap-in        | 1.5                       | Quick connect terminals 4.8 x 0.8 mm | 6600.4215.21 |   |
| Snap-in        | 2                         | Quick connect terminals 4.8 x 0.8 mm | 6600.4220    |   |
| Snap-in        | 2                         | Quick connect terminals 4.8 x 0.8 mm | 6600.4220.21 |   |
| Snap-in        | 2.5                       | Quick connect terminals 4.8 x 0.8 mm | 6600.4225    |   |
| Snap-in        | 2.5                       | Quick connect terminals 4.8 x 0.8 mm | 6600.4225.21 |   |
| Snap-in        | 3                         | Quick connect terminals 4.8 x 0.8 mm | 6600.4230    |   |
| Snap-in        | 3                         | Quick connect terminals 4.8 x 0.8 mm | 6600.4230.21 |   |
| Snap-in        | 1                         | Quick connect terminals 6.3 x 0.8 mm | 6600.4310    |   |
| Snap-in        | 1                         | Quick connect terminals 6.3 x 0.8 mm | 6600.4310.21 |   |
| Snap-in        | 1.2                       | Quick connect terminals 6.3 x 0.8 mm | 6600.4312    |   |
| Snap-in        | 1.2                       | Quick connect terminals 6.3 x 0.8 mm | 6600.4312.21 |   |
| Snap-in        | 1.5                       | Quick connect terminals 6.3 x 0.8 mm | 6600.4315    | ■ |
| Snap-in        | 1.5                       | Quick connect terminals 6.3 x 0.8 mm | 6600.4315.21 | ■ |
| Snap-in        | 2                         | Quick connect terminals 6.3 x 0.8 mm | 6600.4320    | ■ |
| Snap-in        | 2                         | Quick connect terminals 6.3 x 0.8 mm | 6600.4320.21 |   |
| Snap-in        | 2.5                       | Quick connect terminals 6.3 x 0.8 mm | 6600.4325    | ■ |
| Snap-in        | 2.5                       | Quick connect terminals 6.3 x 0.8 mm | 6600.4325.21 |   |
| Snap-in        | 3                         | Quick connect terminals 6.3 x 0.8 mm | 6600.4330    | ■ |
| Snap-in        | 3                         | Quick connect terminals 6.3 x 0.8 mm | 6600.4330.21 |   |
| Snap-in        | 1                         | Solder terminals                     | 6600.4110    |   |
| Snap-in        | 1                         | Solder terminals                     | 6600.4110.21 |   |
| Snap-in        | 1.2                       | Solder terminals                     | 6600.4112    |   |
| Snap-in        | 1.2                       | Solder terminals                     | 6600.4112.21 |   |
| Snap-in        | 1.5                       | Solder terminals                     | 6600.4115    | ■ |
| Snap-in        | 1.5                       | Solder terminals                     | 6600.4115.21 | ■ |
| Snap-in        | 2                         | Solder terminals                     | 6600.4120    | ■ |
| Snap-in        | 2                         | Solder terminals                     | 6600.4120.21 |   |
| Snap-in        | 2.5                       | Solder terminals                     | 6600.4125    |   |
| Snap-in        | 2.5                       | Solder terminals                     | 6600.4125.21 |   |
| Snap-in        | 3                         | Solder terminals                     | 6600.4130    | ■ |
| Snap-in        | 3                         | Solder terminals                     | 6600.4130.21 |   |

■ Most Popular.

Availability for all products can be searched real-time: <http://www.schurter.com/en/Stock-Check/Stock-Check-SCHURTER>

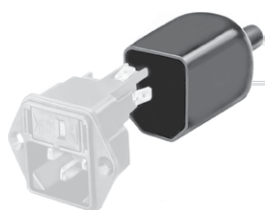
Suffix ".21" corresponds to the version with V-Lock mating cordset. The connector is equipped with a notch intended for use with the latching cordset. The cord latching system prevents against accidental removal of the cordset.

Articles for enhanced glow wire test requirements acc. IEC 60695-2-12 and -13 can be ordered with ending ".15" (xxxx.xxx.15). They are suitable for the use in unattended household equipment acc. IEC 60335-1.

**Packaging unit** 50 Pcs

### Accessories

**Description**



Assorted Covers  
Rear Cover



Wire Harness  
Wire harness for SCHURTER products



Cord retaining kits  
Cord retaining strain relief

### Mating Inlets/Plugs

**Category / Description**

[Plug Overview complete](#)



|   |      |
|---|------|
| IEC Plug E, Cord Connector (Rewireable), Straight, max. cable Diameter 8.5 mm | 4732 |
| IEC Plug E, Cord Connector (Rewireable), Angled, max. Cable Diameter 8.5 mm   | 4733 |
| IEC Plug E, Cord Connector (Rewireable), Straight, max. Cable Diameter 10 mm  | 4735 |
| IEC Plug E, Cord Connector (Rewireable), Angled, max. Cable Diameter 10 mm    | 4736 |
| IEC Plug E, Cord Connector (Rewireable), Straight                             | 9009 |

[Plug further types to 6600-4](#)

...

### Mating Inlets/Plugs shuttered

[Interconnection Cord Overview complete](#)



|   |           |
|---|-----------|
| IEC Interconnection Cord with IEC Connector C13, V-Lock, straight | 6051.2007 |
| IEC Interconnection Cord with IEC Connector C13, V-Lock, straight | 6051.2067 |

[Interconnection Cord further types to 6600-4](#)