



Black Box Products

Cables > Copper Patch Cables

GigaBase 350 CAT5e Patch Cable (UTP) with Snagless Boots, Crossover, Blue

The great choice for Gigabit crossover applications.

EVCRB81

Extended Double Diamond™ Warranty Available
(Lifetime)

Product Highlights

- Use this 350-MHz cable when making switch-to-switch or other crossover connections in your CAT5e network.

- Tested to 350 MHz.
- Meets or exceeds CAT5e T568B standards.
- Specially designed for use with other GigaBase components.
- Guaranteed for life!

Description

GigaBase 350 CAT5e Patch Cable (UTP), Snagless Boots, Crossover, Blue, 7-ft. (2.1-m)

Quick Facts

- Use this 350-MHz cable when making switch-to-switch or other crossover connections in your CAT5e network.
- Tested to 350 MHz.
- Meets or exceeds CAT5e T568B standards.
- Specially designed for use with other GigaBase components.
- Guaranteed for life!

Further Details

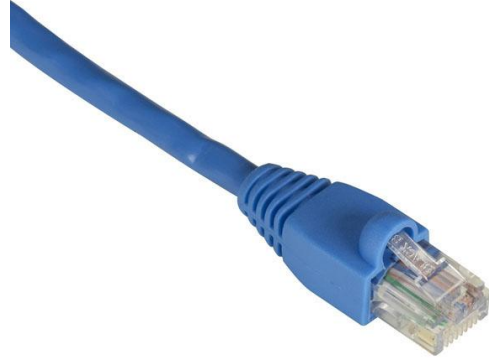
- Improved near-end crosstalk (NEXT) compared to standard CAT5 cable.
- Superior construction offers significant headroom.
- Stranded conductors for short runs.
- Tuned-plug design maintains a tighter twist and reduces noise.
- Enhanced performance parameters and electrical characteristics.
- Gold-plated contacts are designed for an insertion/extraction life of 1000 cycles.
- Has four pairs, 24 AWG construction, RJ-45 connectors, and a PVC jacket.

Technical Specifications for GigaBase 350 CAT5e Patch Cable (UTP) with Snagless Boots, Crossover, Blue, 7-ft. (2.1-m):

Attenuation (Maximum)	24.2 dB/100 m (328.1 ft.) at 100 MHz; 49.3 dB/100 m (328.1 ft.) at 350 MHz
------------------------------	---

Cable Type	4-pair UTP
-------------------	------------

Conductor Gauge	24 AWG, stranded
------------------------	------------------



Frequency	Up to 350 MHz
Impedance	100 ± 15 ohms
NEXT (Minimum)	40.3 dB/100 m (328.1 ft.) at 100 MHz; 32.2 dB/100 m (328.1 ft.) at 350 MHz
PS-NEXT (Minimum)	38.3 dB/100 m (328.1 ft.) at 100 MHz; 30.2 dB/100 m (328.1 ft.) at 350 MHz
Return Loss (Minimum)	20.1 dB/100 m (328.1 ft.) at 100 MHz; 16.3 dB/100 m (328.1 ft.) at 350 MHz
Standards	TIA/EIA-568-B.2 Category 5e

Cross Reference

- EVCRB81-0001 – 1ft
- EVCRB81-0010 – 10ft
- EVCRB81-0020 – 20ft