

IEC Appliance Inlet C14 Modular Assembling Options

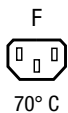
Standard- or Medical-Filter



Snap-In Version

5411.XX5X.XXX
Appliance inlet
Fuseholder
Line filter

5431.X05X.XXX
Appliance inlet
Appliance outlet
Switch
Line filter



Description

- Panel Mount:
Snap-in version from front side
- 2 - 5 Functions:
Appliance Inlet Protection class I, Connector, Line Switch 2-pole, Fuseholder for fuse-links 5 x 20 mm 1- or 2-pole, Line filter in standard and medical version
- Solder terminals 3.5 x 0.8 mm or quick connect terminals 6.3 x 0.8 mm

Approvals

- VDE Certificate Number: 101307
- UL File Number: E72928

Characteristics

- Modular component selection
- Individual components soldered on a printed circuit board
- Plug removal necessary for fuse-link replacement
Fuse drawer meets requirements of medical standard IEC/EN 60601-1
The fuseholder is accessible from the equipment front
- Technical data of filter-components see blockfilter type 5500
- Fully insulated from the rear
- Suitable for use in equipment according to IEC/UL 60950
Suitable for use in medical equipment according to IEC/UL 60601-1

Other versions on request

- Line switch with other rocker marking

References

- Alternative: version without line filter [Felcom 64](#)
- Alternative: Standard version

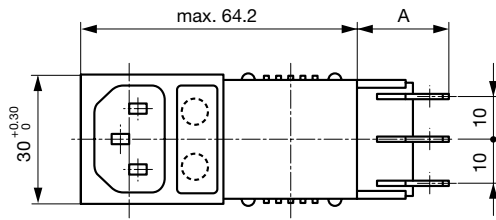
Weblinks

[pdf-datasheet](#), [html-datasheet](#), [General Product Information](#), [Approvals](#), [CE declaration of conformity](#), [RoHS](#), [CHINA-RoHS](#), [Mating Connectors](#), [e-Shop](#), [SCHURTER-Stock-Check](#), [Distributor-Stock-Check](#), [CAD-Drawings](#), [Accessories](#), [Detailed request for product](#)

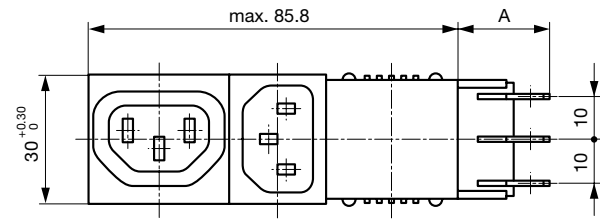
Technical Data

Ratings IEC	1 - 10A @ Ta 40 °C / 250 VAC; 50Hz	Appliance-Inlet/-Outlet	C14 acc. to IEC 60320, F acc. to IEC 60320, UL 498, CSA C22.2 no. 42 (for cold conditions) pin-temperature 70 °C, 10A, Protection Class I
Ratings UL/CSA	1 - 10A @ Ta 40 °C / 250 VAC; 60Hz	Fuseholder	1 or 2 pole, Shocksafe category PC2 acc. to IEC 60127-6, for fuse-links 5 x 20mm
Leakage Current	standard < 0.5 mA (250 V / 60Hz) medical < 5 µA (250 V / 60 Hz)	Rated Power Acceptance @ Ta 23 °C	5 x 20: 2 W (1 pole)/ 1.6 W (2-pole) per pole
Dielectric Strength	> 1.7 kVDC between L-N > 2.7 kVDC between L/N-PE Test voltage (2 sec)	Power Acceptance @ Ta > 23°C	Admissible power acceptance at higher ambient temperature see derating curves
Allowable Operation Temp.	-25 °C to 85 °C	Line Switch	Rocker switch 2-pole, non-illuminated, acc. to IEC 61058-1 Technical Details
Climatic Category	25/085/21 acc. to IEC 60068-1	Line Filter	Standard Version, IEC 60939, UL 1283, CSA C22.2 no. 8 Technical Details
Degree of Protection	from front side IP 40 acc. to IEC 60529	MTBF	> 1'400'000h acc. to MIL-HB-217 F
Protection Class	Suitable for appliances with protection class I acc. to IEC 61140		
Terminal	Solder terminals 3.5 x 0.8 mm or quick connect terminals 6.3 x 0.8 mm		
Panel Thickness s	Snap-in: 1/1.2/1.5/2/2.5/3mm1/1.2/1.5/2/2.5/3 mm		
Material: Housing	Thermoplastic, black, UL 94V-0		

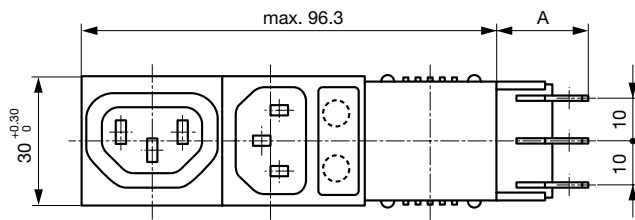
Dimension



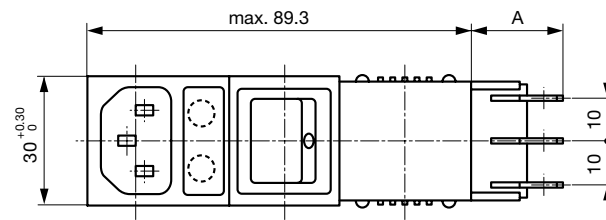
Variants 5411.XX5X.XXX
Mounting Ø: 63+0,2 x 27.6+0,2



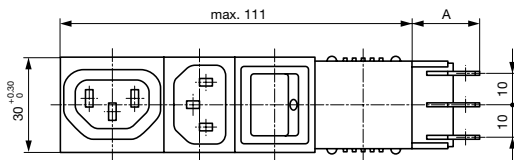
Variants 5421.X05X.XXX
Mounting Ø: 85.9+0,2 x 27.6+0,2



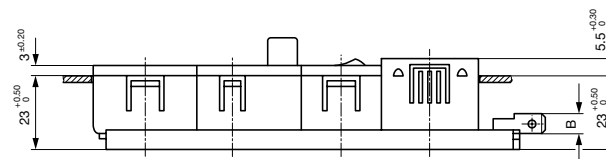
Variants 5423.XX5X.XXX
Mounting Ø: 96.4+0,2 x 27.6+0,2



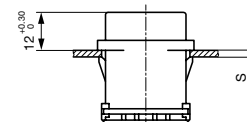
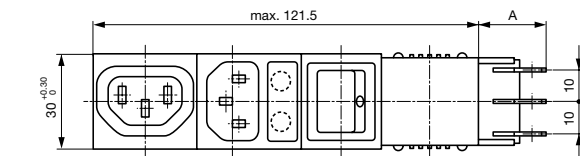
Variants 5424.XX5X.XXX
Mounting Ø: 87.9+0,2 x 27.6+0,2



Variants 5431.X05X.XXX
Mounting Ø: 111.1+0,2 x 27.6+0,2



Variants 5432.XX5X.XXX
Mounting Ø: 121.6+0,2 x 27.6+0,2

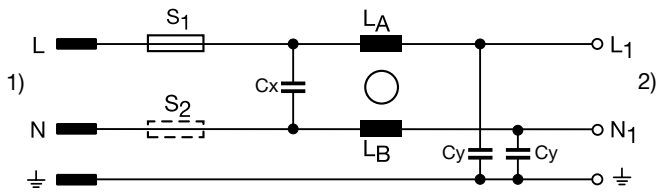


Technical Data of Filter-Components

Rated Current [A]	Filter-Type	Inductances L [mH]	Capacitance CX [nF]	Capacitance CY [nF]	R [MΩ]
1	Standard Version	2 x 11	47	2.2	-
2	Standard Version	2 x 4	47	2.2	-
4	Standard Version	2 x 1.6	47	2.2	-
6	Standard Version	2 x 0.7	47	2.2	-
8	Standard Version	2 x 0.6	47	2.2	-
10	Standard Version	2 x 0.4	47	2.2	-
1	Medical Version (M5)	2 x 11	47	-	1
2	Medical Version (M5)	2 x 4	47	-	1
4	Medical Version (M5)	2 x 1.6	47	-	1
6	Medical Version (M5)	2 x 0.7	47	-	1
8	Medical Version (M5)	2 x 0.6	47	-	1
10	Medical Version (M5)	2 x 0.4	47	-	1

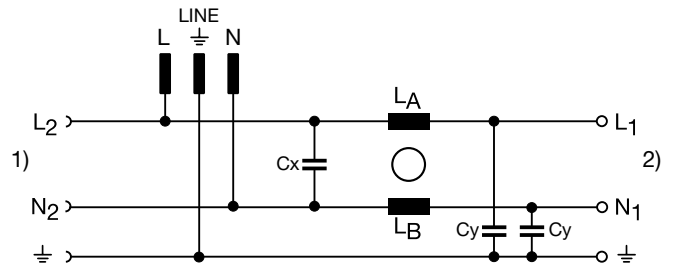
Diagrams

5411

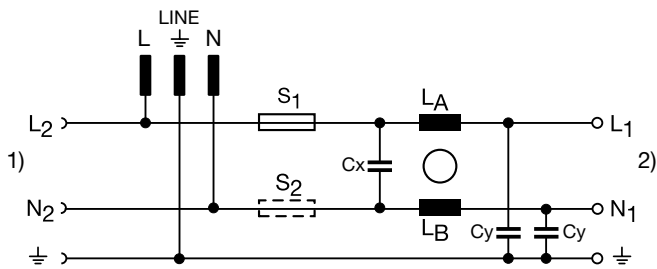


1) Line
2) Load 1
5423

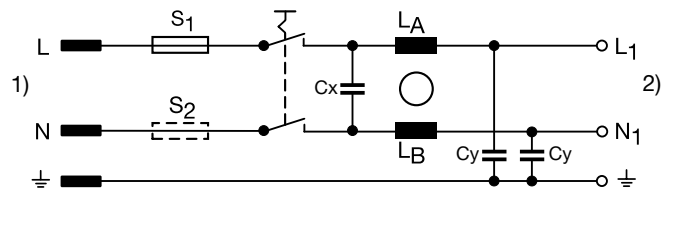
5421



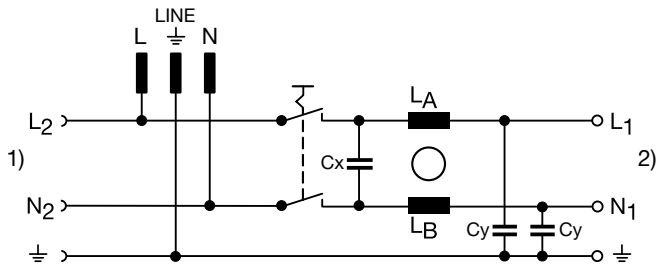
1) Load 2
2) Load 1
5424



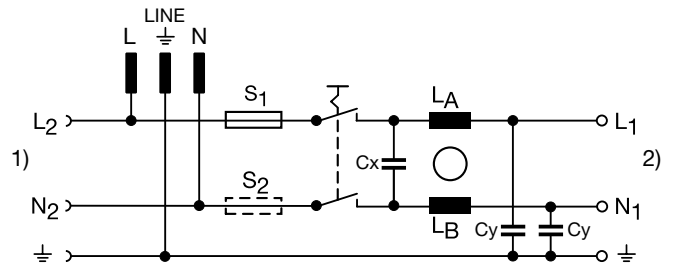
1) Load 2
2) Load 1
5431



1) Line
2) Load 1
5432



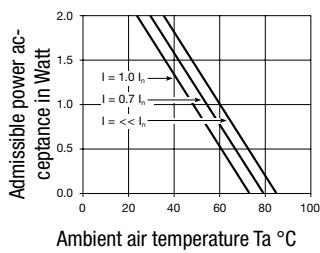
1) Load 2
2) Load 1



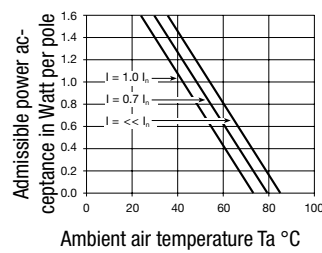
1) Load 2
2) Load 1

Derating Curves

1-pole



2-pole



Ordering instructions

54 XX.X X XX.XX X

Type of line filter
 1 = standard
 3 = medical

"Snap-in" panel thickness
 10 = 1,0 mm
 12 = 1,2 mm
 15 = 1,5 mm
 20 = 2,0 mm
 25 = 2,5 mm
 30 = 3,0 mm

Connection
 51 = solder terminals 3,5 x 0,8 mm
 53 = quick connect terminals 6,3 x 0,8 mm

Fuseholder 5 x 20 mm
 0 = without fuseholder
 1 = 1-pole
 2 = 2-pole

Line filter
 1 = 1 Amp.
 2 = 2 Amp.
 4 = 4 Amp.
 6 = 6 Amp.
 8 = 8 Amp.
 9 = 10 Amp.

Module combination
 11 = Appliance inlet, fuseholder
 21 = Appliance inlet, appliance outlet
 23 = Appliance inlet, fuseholder, appliance outlet
 24 = Appliance inlet, fuseholder, switch
 31 = Appliance inlet, appliance outlet, switch
 32 = Appliance inlet, fuseholder, appliance outlet, switch

Base model

Packaging unit 10 Pcs

Accessories

Description



[Cord retaining kits](#)
 Cord retaining strain relief

Mating Inlets/Plugs

Category / Description

[Plug Overview complete](#)



IEC Plug E, Cord Connector (Rewireable), Straight, max. cable Diameter 8.5 mm	4732
IEC Plug E, Cord Connector (Rewireable), Angled, max. Cable Diameter 8.5 mm	4733
IEC Plug E, Cord Connector (Rewireable), Straight, max. Cable Diameter 10 mm	4735
IEC Plug E, Cord Connector (Rewireable), Angled, max. Cable Diameter 10 mm	4736
IEC Plug E, Cord Connector (Rewireable), Straight	9009

[Plug further types to Felcom 54](#)

...

Mating Outlets/Connectors

[Appliance Outlet Overview complete](#)



IEC Appliance Outlet F, Screw-on Mounting, Front Side, Solder Terminal	4787
IEC Appliance Outlet F, Snap-in Mounting, Front Side, Solder or Quick-connect Terminal	4788
IEC Appliance Outlet F or H, Screw-on Mounting, Front Side, Solder, PCB or Quick-connect Terminal	5091

[Appliance Outlet further types to Felcom 54](#)



Connector Overview complete

IEC Connector C15A, Rewireable, Straight	0102
IEC Connector C15A, Rewireable, Straight	0102-G
IEC Connector C15A, Rewireable, Angled	0112
IEC Connector C13, Rewireable, Angled	4012
IEC Connector C13, Rewireable, Straight	4022
Connector further types to Felcom 54	...