

IEC Appliance Inlet C14 with modular extended Components

Plug removal necessary for fuse replacement



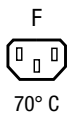
6421.005X.XX  
Appliance inlet  
Appliance outlet



6431.005X.XX  
Appliance inlet  
Switch  
Appliance outlet



6432.0X5X.XX  
Appliance inlet  
Fuseholder  
Switch  
Appliance outlet



### Description

- Panel Mount:  
Snap-in version, from front side
- 2 - 5 Functions:  
Appliance Inlet, Protection class I, Outlet, Line Switch 2-pole, Fuseholder for fuse-links 5 x 20 mm 1- or 2-pole, Solder terminals 3.5 x 0.8 mm or quick connect terminals 6.3 x 0.8 mm

### Approvals

- VDE Certificate Number: 40028094
- ENEC File Number: 101307
- UL File Number: E103791, E96454
- CSA File Number: 38456

### Characteristics

- Modular component selection
- Individual components soldered on a printed circuit board
- Plug removal necessary for fuse-link replacement  
Fuse drawer meets requirements of medical standard IEC/EN 60601-1  
The fuseholder is accessible from the equipment front
- Fully insulated from the rear
- Suitable for use in equipment according to IEC/UL 60950

### Other versions on request

- Line switch with other rocker marking

### References

Alternative: version with line filter [Felcom 54](#)

### Weblinks

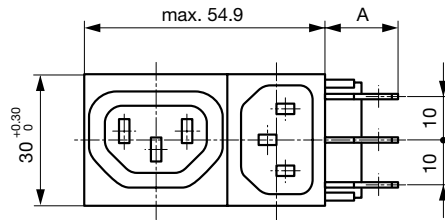
[pdf-datasheet](#), [html-datasheet](#), [General Product Information](#), [Approvals](#), [CE declaration of conformity](#), [RoHS](#), [CHINA-RoHS](#), [Mating Connectors](#), [e-Shop](#), [SCHURTER-Stock-Check](#), [Distributor-Stock-Check](#), [CAD-Drawings](#), [Accessories](#), [Detailed request for product](#)

### Technical Data

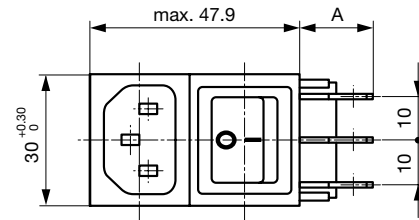
Ratings IEC	10A / 250VAC; 50Hz
Ratings UL/CSA	10A / 125/250VAC; 60Hz
Allowable Operation Temp.	-25 °C to 70 °C
Protection Class	Suitable for appliances with protection class I acc. to IEC 61140
Terminal	Solder terminals 3.5 x 0.8 mm or quick connect terminals 6.3 x 0.8 mm, tin-plated
Panel Thickness s	Snap-in: 1/1.2/1.5/2/2.5/3 mm
Material: Housing	Thermoplastic, black, UL 94V-0

Appliance Inlet / Appliance Outlet	C14 acc. to IEC 60320 and F acc. to IEC 60320, UL 498, CSA C22.2 no. 42 (for cold conditions) pin-temperature 70 °C, 10A, Protection Class I
Fuseholder	1 or 2 pole, Shocksafe category PC2 acc. to IEC 60127-6, for fuse-links 5 x 20mm
Rated Power Acceptance @ Ta 23 °C	5 x 20: 2W (1 pole)/ 1.6W (2-pole) per pole
Power Acceptance @ Ta > 23°C	Admissible power acceptance at higher ambient temperature see derating curves
Line Switch	Rocker switch 2-pole, non-illuminated, IEC 61058-1 <a href="#">Technical Details</a>

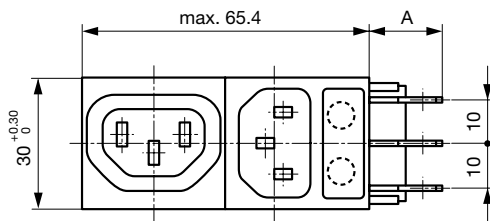
## Dimensions



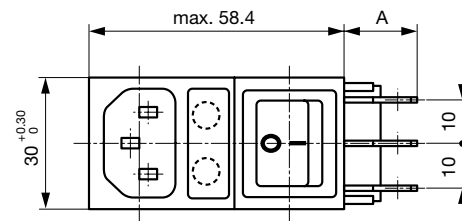
Variants 6421.005X.XX  
 Mounting hole: 53.6+0,2 x 27.6+0,2



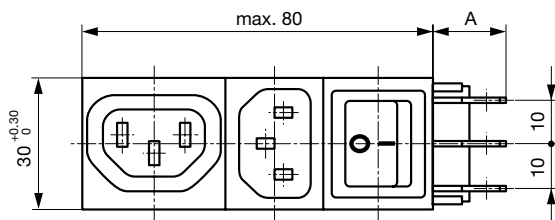
Variants 6422.005X.XX  
 Mounting hole: 46.7+0,2 x 27.6+0,2



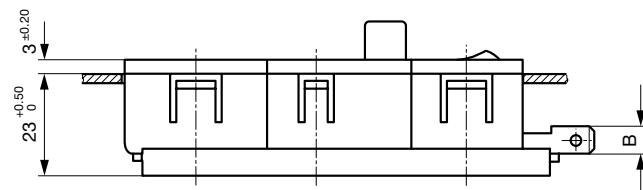
Variants 6423.0X5X.XX  
 Mounting hole: 65.5+0,2 x 27.6+0,2



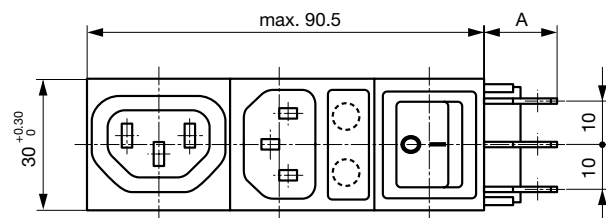
Variants 6424.0X5X.XX  
 Mounting hole: 57+0,2 x 27.6+0,2



Variants 6431.005X.XX  
 Mounting hole: 80.1+0,2 x 27.6+0,2

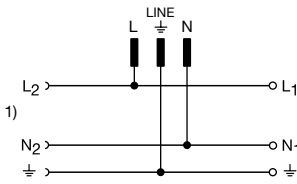


Variants 6432.0X5X.XX  
 Mounting hole: 90.6+0,2 x 27.6+0,2



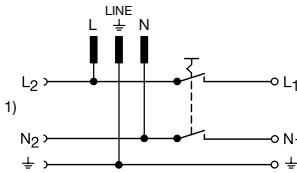
Diagrams

6421



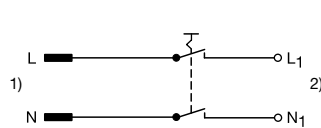
- 1) Load 2
- 2) Load 1

6431



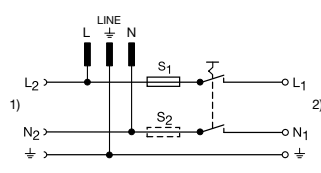
- 1) Load 2
- 2) Load 1

6422



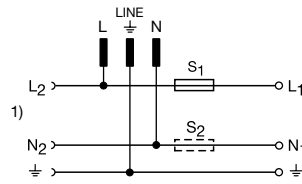
- 1) Line
- 2) Load 1

6432



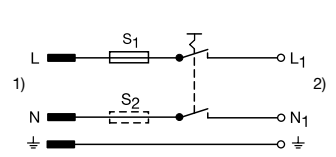
- 1) Load 2
- 2) Load 1

6423



- 1) Load 2
- 2) Load 1

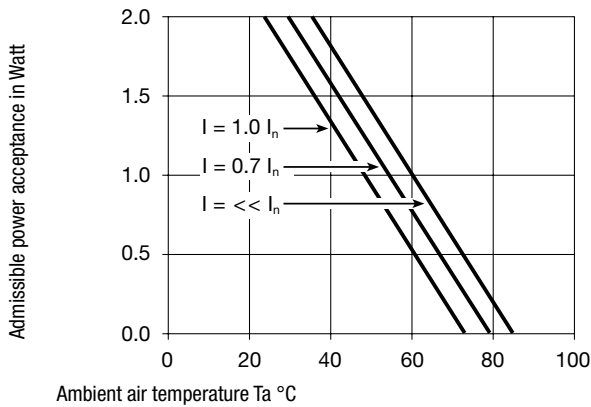
6424



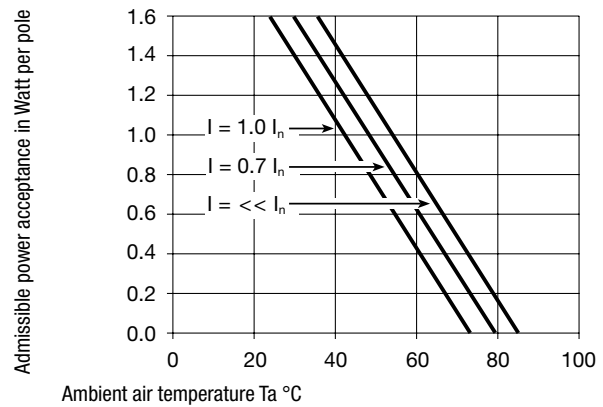
- 1) Line
- 2) Load 1

Derating Curves

1-pole



2-pole



Ordering instructions

64 XX.0X5X.XX

"Snap-in" panel thickness

- 10 = 1,0 mm
- 12 = 1,2 mm
- 15 = 1,5 mm
- 20 = 2,0 mm
- 25 = 2,5 mm
- 30 = 3,0 mm

Connection

- 51 = solder terminals 3,5 x 0,8 mm
- 53 = quick connect terminals 6,3 x 0,8 mm

Fuseholder 5 x 20 mm

- 00 = without fuseholder
- 01 = 1-pole
- 02 = 2-pole

Module combination

- 21 = Appliance inlet, outlet
- 22 = Appliance inlet, switch
- 23 = Appliance inlet, fuseholder, outlet
- 24 = Appliance inlet, fuseholder, switch
- 31 = Appliance inlet, outlet, switch
- 32 = Appliance inlet, fuseholder, outlet, switch

Base model

Packaging unit

10 Pcs

Accessories

Description



[Cord retaining kits](#)  
Cord retaining strain relief

Mating Inlets/Plugs

Category / Description

[Plug Overview complete](#)



IEC Plug E, Cord Connector (Rewireable), Straight, max. cable Diameter 8.5 mm	4732
IEC Plug E, Cord Connector (Rewireable), Angled, max. Cable Diameter 8.5 mm	4733
IEC Plug E, Cord Connector (Rewireable), Straight, max. Cable Diameter 10 mm	4735
IEC Plug E, Cord Connector (Rewireable), Angled, max. Cable Diameter 10 mm	4736
IEC Plug E, Cord Connector (Rewireable), Straight	9009
<a href="#">Plug further types to Felcom 64</a>	...

Mating Outlets/Connectors

[Appliance Outlet Overview complete](#)



IEC Appliance Outlet F, Screw-on Mounting, Front Side, Solder Terminal	4787
IEC Appliance Outlet F, Snap-in Mounting, Front Side, Solder or Quick-connect Terminal	4788
IEC Appliance Outlet F or H, Screw-on Mounting, Front Side, Solder, PCB or Quick-connect Terminal	5091
<a href="#">Appliance Outlet further types to Felcom 64</a>	...

[Connector Overview complete](#)



IEC Connector C15A, Rewireable, Straight	0102
IEC Connector C15A, Rewireable, Straight	0102-G
IEC Connector C15A, Rewireable, Angled	0112
IEC Connector C13, Rewireable, Angled	4012
IEC Connector C13, Rewireable, Straight	4022
<a href="#">Connector further types to Felcom 64</a>	...

[Power Supply or Interconnection Cord Overview complete](#)



Diverse Power Supply and Interconnection Cords 10 A	Cord Sets 10 A
<a href="#">Power Supply or Interconnection Cord further types to Felcom 64</a>	...