

Compensated High Current Choke, 1-phase



Description

- Current compensated choke
- 1-phase choke
- Flexible wire
- Flange for mounting onto printed circuit board
- Fully potted resin

Standards

- EN 60938
- UL 1283
- CSA 22.2 no 8

Applications

- Placed in front of frequency converter
- Stepper motor drives
- UPS-systems
- Inverter

Weblinks

[pdf-datasheet](#), [html-datasheet](#), [General Product Information](#), [Approvals](#), [CE declaration of conformity](#), [RoHS](#), [CHINA-RoHS](#), [e-Shop](#), [SCHURTER-Stock-Check](#), [Distributor-Stock-Check](#), [Detailed request for product](#)

Technical Data

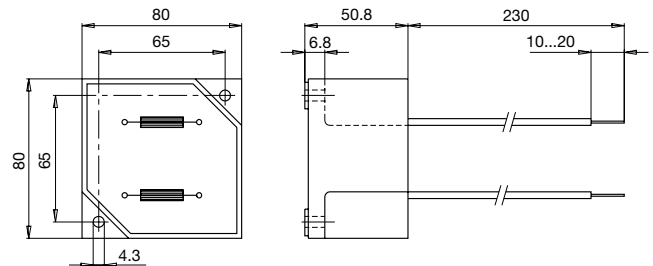
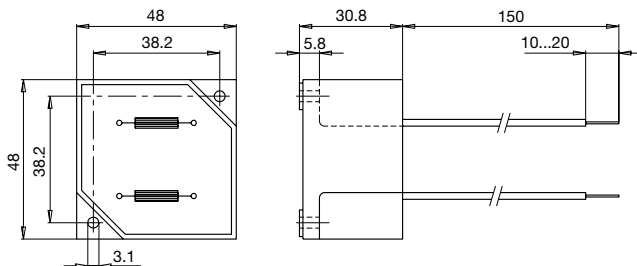
| | |
|---------------------------|-----------------------------|
| Rated voltage | up to 540 VAC |
| Rated voltage | up to 760 VDC |
| Rated Current | 10 - 50 A @ Ta 40 °C |
| Rated inductance | 1.1 - 12 mH, Tol. -30% +50% |
| Power Operating Frequency | 50 - 400 Hz |
| Terminal technic | Flexible wire |
| Weight | 145 - 1865 g |
| Material: Housing | UL 94V-0 |
| Sealing Compound | UL 94V-0 |

| | |
|---------------------------|--|
| Test Voltage | 2.5 kV, 50 Hz, 2 sec, winding to winding |
| Isolation Voltage | 2.5 kV, 50 Hz, 2 sec, winding to ambient |
| Climatic Category | 25/100/21 acc. to IEC 60068-1 |
| Allowable Operation Temp. | -25 °C to 100 °C |

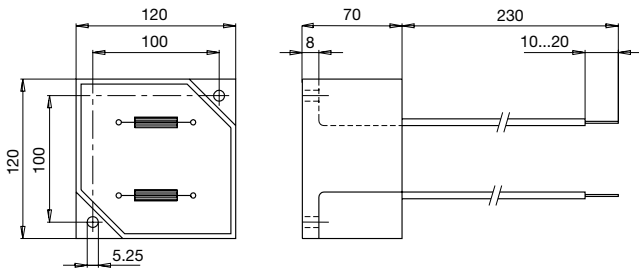
Dimension

Case 29-2W

Case 31-2W

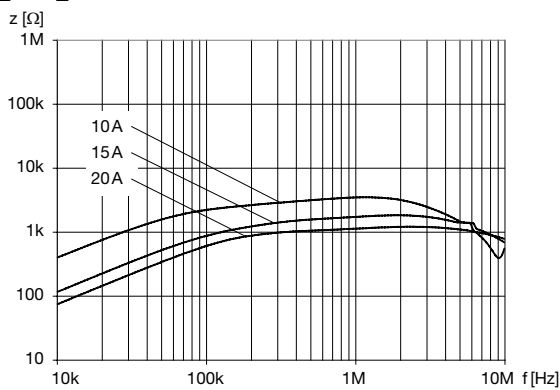


Case 33-2W

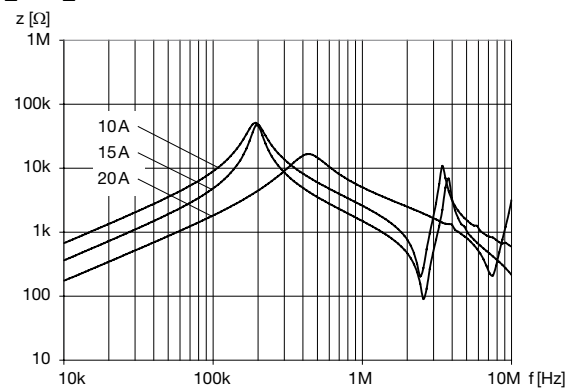


Impedance curves

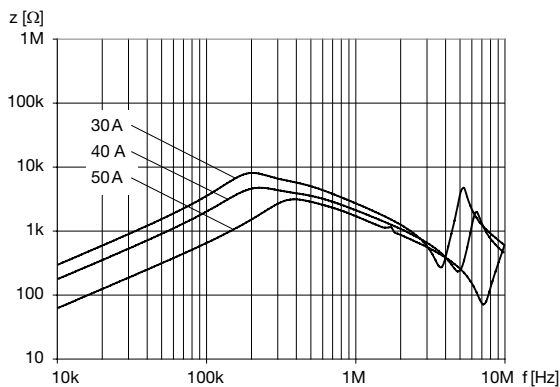
DKIP_0229_XXXX



DKIP_0231_XXXX



DKIP_0233_XXXX



All Variants

| I_n [A] | L_n [mH] | R_{cu} [mΩ] | Tripped Power Dissipation [W] | f_{RES} [MHz] | Copper ϕ [mm] | Weight [g] | Housing | Packing unit [pcs.] | Order Number |
|-----------|------------|---------------|-------------------------------|-----------------|--------------------|------------|---------|---------------------|----------------|
| 10 | 5 | 18 | 3.6 | 0.35 | 1.25 | 145 g | 29-2W | 12 | DKIP-0229-1005 |
| 15 | 2 | 8 | 3.6 | 0.6 | 1.6 | 145 g | 29-2W | 12 | DKIP-0229-1502 |
| 20 | 1.1 | 6 | 4.8 | 2.5 | 1.8 | 145 g | 29-2W | 12 | DKIP-0229-2001 |
| 10 | 12 | 40 | 8 | 0.15 | 1.25 | 477 g | 31-2W | 2 | DKIP-0231-1012 |
| 15 | 5 | 17 | 7.6 | 0.33 | 1.6 | 525 g | 31-2W | 2 | DKIP-0231-1505 |
| 20 | 3 | 10 | 8 | 0.55 | 1.8 | 506 g | 31-2W | 2 | DKIP-0231-2003 |
| 30 | 5 | 12.5 | 22.5 | 0.26 | 2.24 | 1600 g | 33-2W | 1 | DKIP-0233-3005 |
| 40 | 3 | 6 | 19.2 | 0.3 | 1.5 x 4.5 | 1830 g | 33-2W | 1 | DKIP-0233-4003 |

50 2 5 25 0.25 1.5 x 4.5 1865g 33-2W 1 DKIP-0233-5002

Most Popular.

Availability for all products can be searched real-time:<http://www.schurter.com/en/Stock-Check/Stock-Check-SCHURTER>