

Compensated High Inductance Choke, 1-phase



Description

- Current compensated choke
- 1-phase choke
- Flexible wire
- Flange for mounting onto printed circuit board
- Fully potted resin

Standards

- EN 60938
- UL 1283
- CSA 22.2 no 8

Applications

- Placed in front of frequency converter
- Stepper motor drives
- UPS-systems
- Inverter

Weblinks

[pdf-datasheet](#), [html-datasheet](#), [General Product Information](#), [Approvals](#), [CE declaration of conformity](#), [RoHS](#), [CHINA-RoHS](#), [e-Shop](#), [SCHURTER-Stock-Check](#), [Distributor-Stock-Check](#), [Detailed request for product](#)

Technical Data

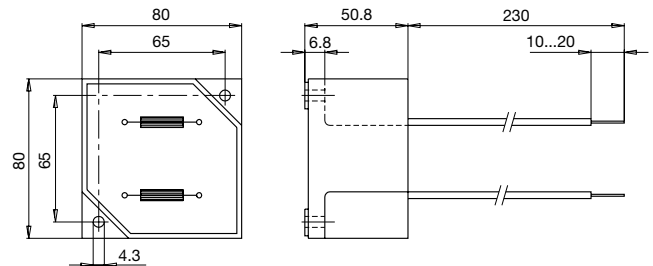
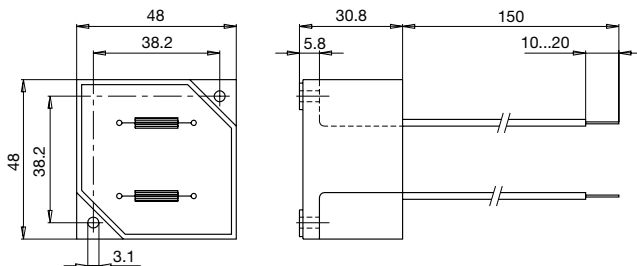
| | |
|---------------------------|----------------------------|
| Rated voltage | up to 540 VAC |
| Rated voltage | up to 760 VDC |
| Rated Current | 4 - 20 A @ Ta 40 °C |
| Rated inductance | 14 - 60 mH, Tol. -30% +50% |
| Power Operating Frequency | 50 - 400 Hz |
| Terminal technic | Flexible wire |
| Weight | 145 - 512 g |
| Material: Housing | UL 94V-0 |
| Sealing Compound | UL 94V-0 |

| | |
|---------------------------|---|
| Test Voltage | 2.5 kV, 50 Hz, 2 sec, winding to winding |
| Isolation Voltage | 2.5 kV eff., 50 Hz, 2 sec, winding to ambient |
| Climatic Category | 25/100/21 acc. to IEC 60068-1 |
| Allowable Operation Temp. | -25 °C to 100 °C |

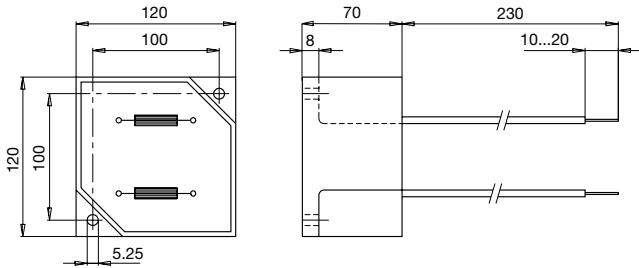
Dimension

Case 29-2W

Case 31-2W

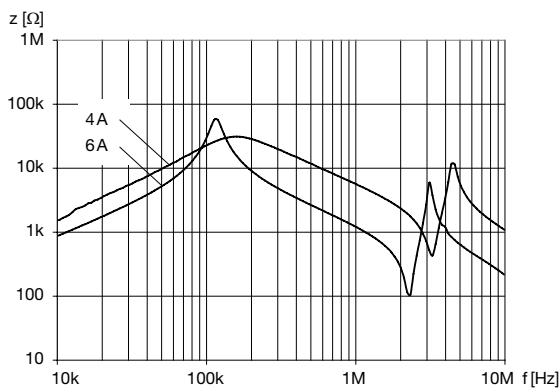


Case 33-2W

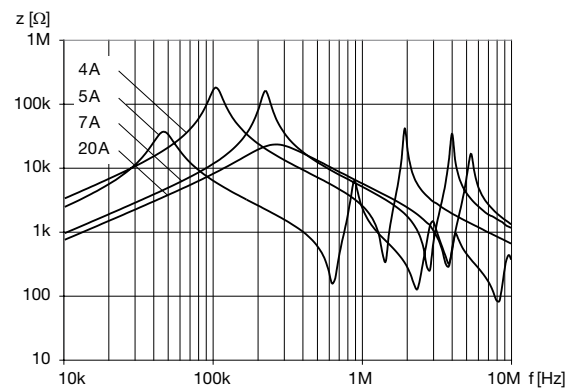


Impedance curves

DKLP-0229-xxxx



DKLP-023x-xxxx



All Variants

| I_n [A] | L_n [mH] | R_{Cu} [mΩ] | Tripped Power Dissipation [W] | f_{RES} [MHz] | Copper ϕ [mm] | Weight [g] | Housing | Packing unit [pcs.] | Order Number |
|-----------|------------|---------------|-------------------------------|-----------------|--------------------|------------|---------|---------------------|----------------|
| 4 | 30 | 96 | 3 | 0.2 | 0.8 | 145 g | 29-2W | 12 | DKLP-0229-0430 |
| 6 | 14 | 46 | 3.3 | 0.3 | 1 | 145 g | 29-2W | 12 | DKLP-0229-0614 |
| 4 | 60 | 250 | 8 | 0.1 | 0.71 | 477 g | 31-2W | 2 | DKLP-0231-0460 |
| 5 | 40 | 126 | 6.3 | 0.048 | 0.9 | 505 g | 31-2W | 2 | DKLP-0231-0540 |
| 7 | 20 | 62 | 6 | 0.18 | 1.12 | 512 g | 31-2W | 2 | DKLP-0231-0720 |
| 20 | 12 | 19 | 15.2 | 0.16 | 1.8 | 180 g | 33-2W | 1 | DKLP-0233-2012 |

Availability for all products can be searched real-time: <http://www.schurter.com/en/Stock-Check/Stock-Check-SCHURTER>