

Compensated High Inductance Choke, 3-phase



**Description**

- Current compensated choke
- 3-phase choke
- Flexible wire
- Flange for mounting onto printed circuit board
- Fully potted resin

**Standards**

- EN 60938
- UL 1283
- CSA 22.2 no 8

**Applications**

- Placed in front of frequency converter
- Stepper motor drives
- UPS-systems
- Inverter

**Weblinks**

[pdf-datasheet](#), [html-datasheet](#), [General Product Information](#), [Approvals](#), [CE declaration of conformity](#), [RoHS](#), [CHINA-RoHS](#), [e-Shop](#), [SCHURTER-Stock-Check](#), [Distributor-Stock-Check](#), [Detailed request for product](#)

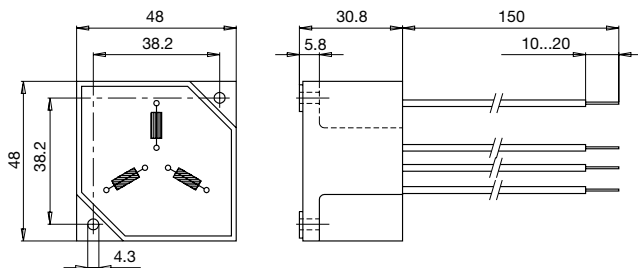
**Technical Data**

Rated voltage	up to 540 VAC
Rated voltage	up to 760 VDC
Rated Current	3 - 16 A @ Ta 40 °C
Rated inductance	4.0 - 50 mH, Tol. -30% +50%
Power Operating Frequency	50 - 400 Hz
Terminal technic	Flexible wire
Weight	145 - 1840 g
Material: Housing	UL 94V-0
Sealing Compound	UL 94V-0

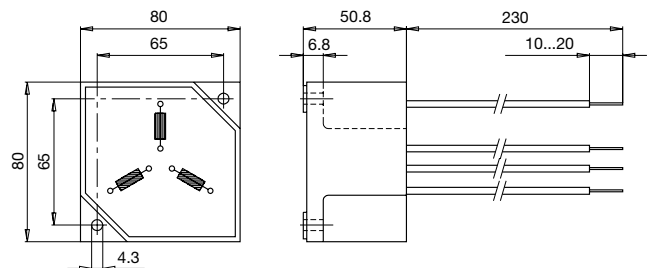
Test Voltage	2.5 kV, 50 Hz, 2 sec, winding to winding
Isolation Voltage	2.5 kV eff., 50 Hz, 2 sec, winding to ambient
Climatic Category	25/100/21 acc. to IEC 60068-1
Allowable Operation Temp.	-25 °C to 100 °C

**Dimension**

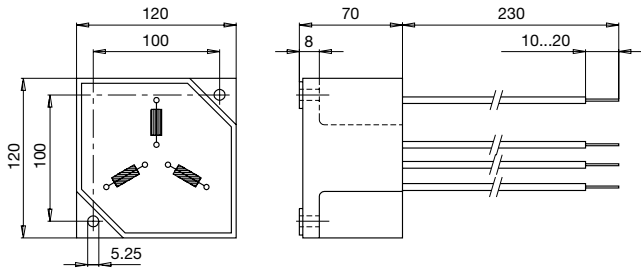
Case 29-3W



Case 31-3W

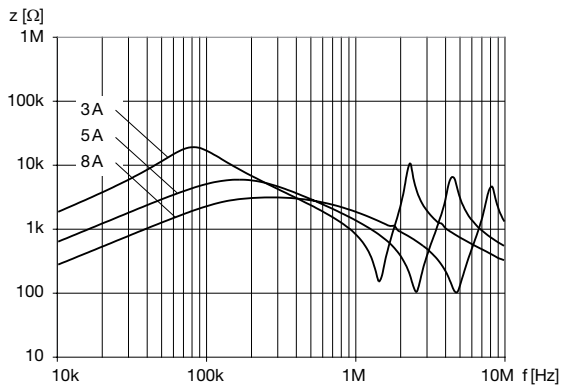


Case 33-3W

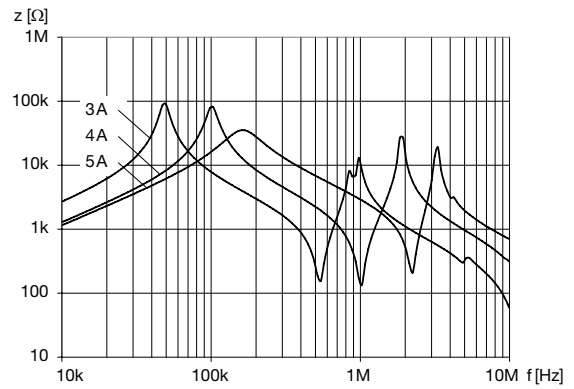


Impedance curves

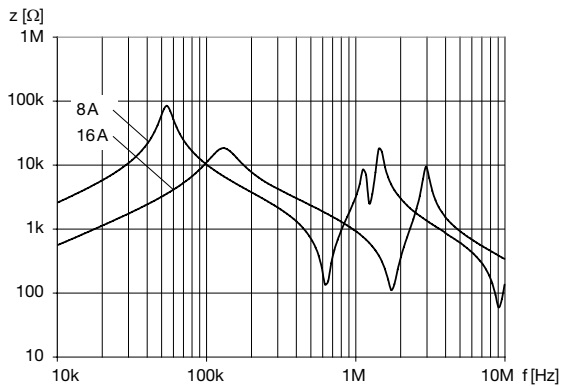
DKLP-0329-xxxx



DKLP-0331-xxxx



DKLP-0333-xxxx



All Variants

$I_n$ [A]	$L_n$ [mH]	$R_{cu}$ [mΩ]	Tripped Power Dissipation [W]	$f_{RES}$ [MHz]	Copper $\phi$ [mm]	Weight [g]	Housing	Packing unit [pcs.]	Order Number
3	30	130	3.5	0.13	0.71	145 g	29-3W	12	DKLP-0329-0330
5	10	48	3.6	0.15	0.9	145 g	29-3W	12	DKLP-0329-0510
8	4	22	4.2	0.4	1.12	145 g	29-3W	12	DKLP-0329-0804
3	50	260	7	0.055	0.71	509 g	31-3W	2	DKLP-0331-0350
4	30	155	7.5	0.075	0.8	512 g	31-3W	2	DKLP-0331-0430
5	20	100	7.5	0.145	0.9	514 g	31-3W	2	DKLP-0331-0520
8	40	110	21	0.05	1.12	1726 g	33-3W	1	DKLP-0333-0840
16	10	30	23	0.14	1.6	1840 g	33-3W	1	DKLP-0333-1610

Availability for all products can be searched real-time: <http://www.schurter.com/en/Stock-Check/Stock-Check-SCHURTER>