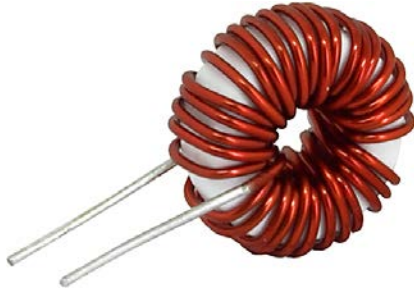


Linear Choke, open version, without socket



Description

- Linear choke
- Wire leads
- Open version without socket and chassis

Standards

- EN 60938

Applications

- Smoothing RFI suppression choke
- RFI suppression choke
- Chopper amplifiers
- DC drives and stepper motor controls
- Switching power supplies

Weblinks

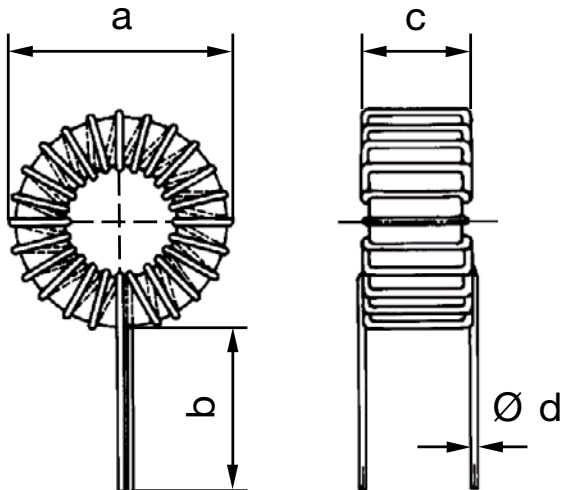
[pdf-datasheet](#), [html-datasheet](#), [General Product Information](#), [Approvals](#), [CE declaration of conformity](#), [RoHS](#), [CHINA-RoHS](#), [e-Shop](#), [SCHURTER-Stock-Check](#), [Distributor-Stock-Check](#), [Detailed request for product](#)

Technical Data

Rated voltage	to 600VDC
Rated Current	0.45 - 7A @ Ta 70 °C
Rated inductance	0.02 - 5mH, Tol. ±15%
Power Operating Frequency	up to 20kHz
Terminal technic	Wire leads
Weight	10 - 12g

Isolation Voltage	2kV eff., winding to ambient
Climatic Category	40/125/21 acc. to IEC 60068-1
Allowable Operation Temp.	-40°C to 125°C

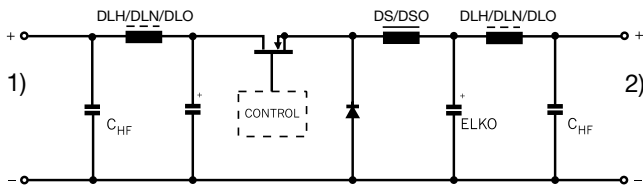
Dimension



Dimensions: see table of variants

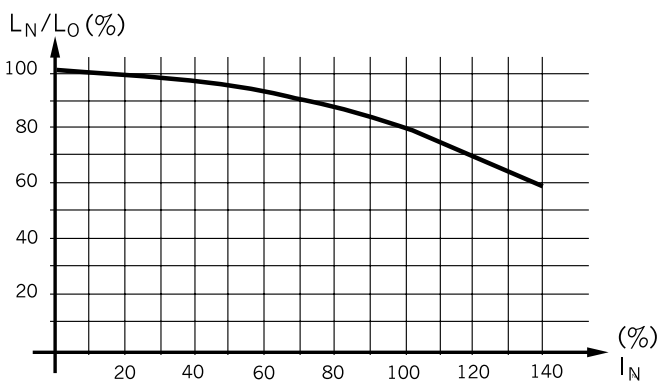
Diagrams

Application in DC-DC Converter



- 1) DC-Input unregulated
- 2) DC-Output regulated

Derating Curves



Inductance variation as function of the magnetizing current

All Variants

I_n [A]	L_n [mH]	R_{cu} [mΩ]	f_{RES} [MHz]	Inductance drop max [%]	A [mm]	B [mm]	C [mm]	D [mm]	Weight [g]	Packing unit [pcs.]	Order Number
0.45	5	3000	0.3	20	20 cm	15 cm	10 cm	0.27 cm	10 g	200	DL01-24-0008
0.6	3	1550	0.4	20	20 cm	36 cm	10 cm	0.32 cm	11 g	200	DL01-24-0007
1.0	1	600	0.8	20	20 cm	15 cm	10 cm	0.38 cm	10 g	200	DL01-24-0006
1.5	0.5	280	1.3	20	20 cm	15 cm	10 cm	0.48 cm	10 g	200	DL01-24-0005
1.8	0.3	178	2	20	20 cm	15 cm	10 cm	0.55 cm	10 g	200	DL01-24-0004
3	0.1	70	8.2	20	20 cm	36 cm	10 cm	0.65 cm	10 g	200	DL01-24-0003
4.5	0.05	26	8.4	20	20 cm	15 cm	10 cm	0.9 cm	11 g	200	DL01-24-0002
7	0.02	12	20.2	20	20 cm	36 cm	10 cm	1.2 cm	12 g	150	DL01-24-0001

R_{cu} at T_u 20°C
 Inductance drop at I_n
 Derating at $T_u > 70^\circ\text{C}$: $I = I_n \times ((125 - T_u) / 55)^{0.5}$

Availability for all products can be searched real-time: <http://www.schurter.com/en/Stock-Check/Stock-Check-SCHURTER>