

Storage Choke, high design



Description

- Storage choke
- THT-terminals
- Inductor vertically positioned in housing
- Constant inductance at high alternating field modulation and large DC magnetization
- Reduced magnetic reversal

Standards

- EN 60938

Applications

- Storage of energy in switched power supplies
- Switch-mode
- Chopper amplifiers
- DC drives and stepper motor controls

Weblinks

[pdf-datasheet](#), [html-datasheet](#), [General Product Information](#), [Approvals](#), [CE declaration of conformity](#), [RoHS](#), [CHINA-RoHS](#), [e-Shop](#), [SCHURTER-Stock-Check](#), [Distributor-Stock-Check](#), [Detailed request for product](#)

Technical Data

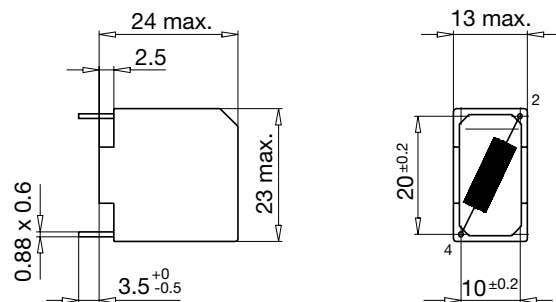
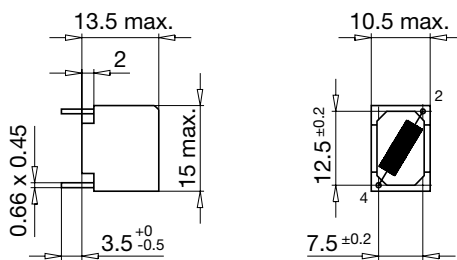
| | |
|---------------------------|-------------------------|
| Rated voltage | up to 600 VDC |
| Rated Current | 0.45 - 4.5 A @ Ta 70 °C |
| Rated inductance | 0.01 - 2 mH, Tol. ±15% |
| Power Operating Frequency | up to 1 MHz |
| Terminal technic | THT |
| Weight | 4 - 30 g |
| Material: Housing | UL 94V-0 |
| Sealing Compound | UL 94V-0 |

| | |
|---------------------------|-------------------------------|
| Isolation Voltage | 2 kV eff., winding to ambient |
| Climatic Category | 40/125/21 acc. to IEC 60068-1 |
| Allowable Operation Temp. | -40 °C to 125 °C |

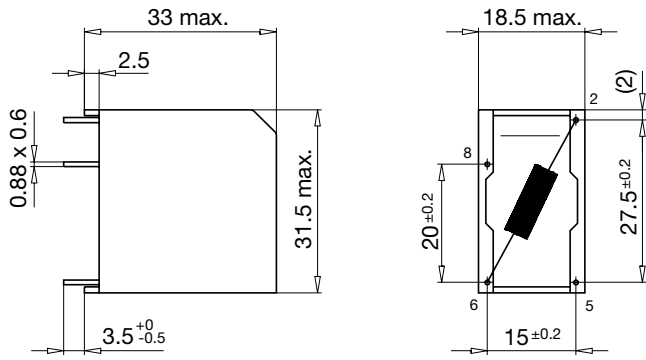
Dimension

Case 01-1

Case 09-1

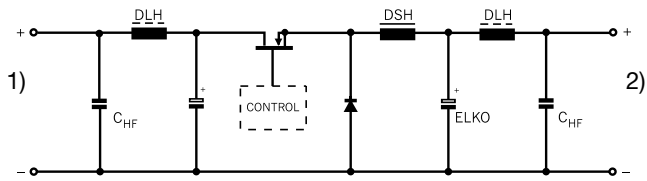


Case 19-1



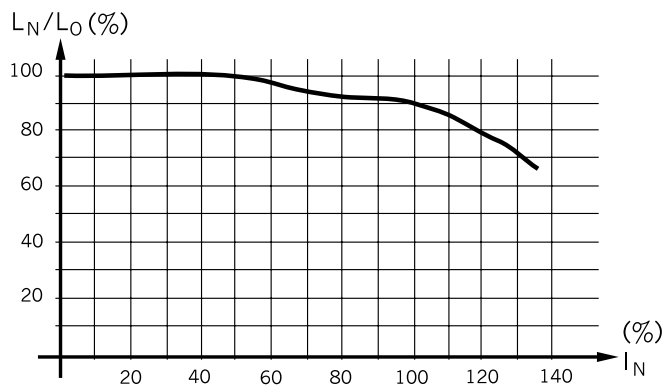
Diagrams

Application in DC-DC Converter



- 1) DC-Input unregulated
- 2) DC-Output regulated

Derating Curves



Inductance variation as function of the magnetizing current

All Variants

| I_n [A] | L_n [mH] | R_{cu} [mΩ] | f_{RES} [MHz] | Weight [g] | Housing | Packing unit [pcs.] | Order Number |
|-----------|------------|---------------|-----------------|------------|---------|---------------------|--------------|
| 0.6 | 0.14 | 280 | 8 | 4 g | 01-1 | 100 | DSH-14-0001 |
| 1 | 0.05 | 100 | 12 | 4 g | 01-1 | 100 | DSH-14-0002 |
| 2 | 0.012 | 25 | 35 | 4 g | 01-1 | 100 | DSH-14-0003 |
| 0.45 | 2 | 1250 | 0.4 | 14 g | 09-1 | 50 | DSH-22-0001 |
| 0.63 | 1 | 750 | 1.8 | 14 g | 09-1 | 50 | DSH-22-0002 |
| 1 | 0.4 | 300 | 3 | 14 g | 09-1 | 50 | DSH-22-0003 |
| 1.4 | 0.2 | 160 | 4.8 | 14 g | 09-1 | 50 | DSH-22-0004 |
| 1.8 | 0.12 | 90 | 6.5 | 14 g | 09-1 | 50 | DSH-22-0005 |
| 3.15 | 0.04 | 33 | 14 | 14 g | 09-1 | 50 | DSH-22-0006 |
| 4.5 | 0.01 | 8 | 35 | 14 g | 09-1 | 50 | DSH-22-0008 |
| 4.5 | 0.02 | 20 | - | 14 g | 09-1 | 50 | DSH-22-0007 |
| 1.6 | 0.5 | 240 | 2.5 | 29 g | 19-1 | 70 | DSH-31-0001 |
| 2 | 0.3 | 140 | 3.5 | 29 g | 19-1 | 70 | DSH-31-0002 |
| 3.15 | 0.15 | 40 | - | 30 g | 19-1 | 70 | DSH-31-0003 |
| 4 | 0.1 | 40 | 6.5 | 30 g | 19-1 | 70 | DSH-31-0004 |
| 4.5 | 0.035 | 15 | 13 | 30 g | 19-1 | 70 | DSH-31-0005 |

Most Popular.

Availability for all products can be searched real-time: <http://www.schurter.com/en/Stock-Check/Stock-Check-SCHURTER>