

PBD 1211 Test Jack, PCB Mounting, Ø 2 mm, 6.3 A, flux-proof



Description

- PCB Mounting
- Test Jack, diameter 2.0 mm
- measuring and testing during operation
- Open, close with test probe
- Resilient contacts, gold plated
- Flux-proof

Weblinks

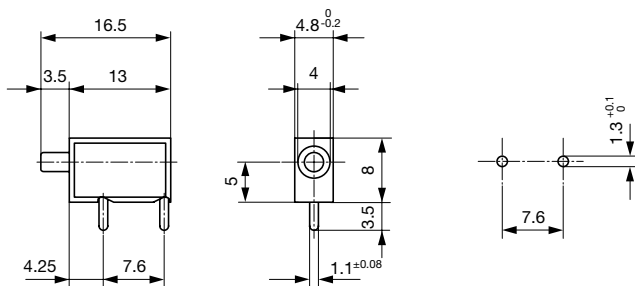
[pdf-datasheet](#), [html-datasheet](#), [General Product Information](#), [Approvals](#), [CE declaration of conformity](#), [RoHS](#), [CHINA-RoHS](#), [e-Shop](#), [SCHURTER-Stock-Check](#), [Distributor-Stock-Check](#), [CAD-Drawings](#), [Accessories](#), [Detailed request for product](#)

Technical Data

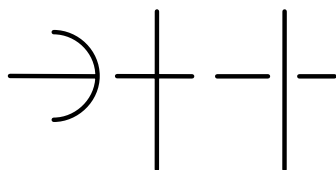
Diameter	2 mm
Rated current	6.3 A
Admissible switching power	@ 250 Insertions: 150 W / max. 2 A or 75 VDC 300 W / max. 3 A or 50 VAC
	@ 1000 Insertions: 100 W / max. 1 A or 75 VDC 150 W / max. 2 A or 50 VAC
Contact resistance	< 10 mΩ at 20 mV
Insulation Resistance	> 5 MΩ (500VDC; 1 min)
Dielectric strength	> 2 kV (50Hz; 1 min)
Clearance and Creepage Distance	> 2 mm
Allowable Operation Temp.	-25 °C to 70 °C

Resistance to Vibration	acc. to IEC 60068-2-6, test Fc
Solderability	235 °C / 2 sec acc. to IEC 60068-2-20, Test Ta, method 1
Resistance to Soldering Heat	260 °C / 5 sec acc. to IEC 60068-2-20, Test Tb, method 1A
Weight	0.6g
Material: Housing	Thermoplastic (PC), UL 94V-2
Surface of contacts	gold plated, Thickness 2.5 μm

Dimensions



Diagrams



All Variants

Product group	Color	Order Number
Test Jack	black	0040.1211
Test Jack	red	0040.1212

Most Popular.

Availability for all products can be searched real-time: <http://www.schurter.com/en/Stock-Check/Stock-Check-SCHURTER>

Packaging unit 100 Pcs

Mating Inlets/Plugs

Category / Description



[Test Jacks & Probes Overview complete](#)

PS 1061 Test Probe, Ø 2 mm, 10 A

PS 1061

[Test Jacks & Probes further types to PBD 1211](#)