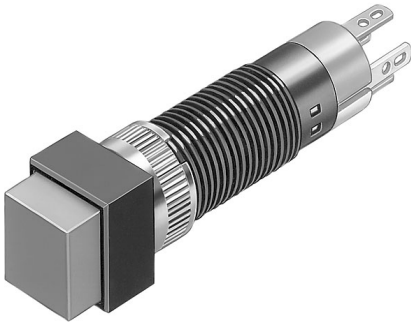


# EAO – Your Expert Partner for Human Machine Interfaces

## 19-451.035 - Illuminated pushbutton actuator

### 19-451.035 - Illuminated pushbutton actuator



*Attention: The preview is based on a sample product. This can differ from your current configuration.*

#### Mounting

Mounting cut-out  $\varnothing$  8 mm

#### Front

Front dimension 9 x 9 mm  
Front shape square

#### Other Attributes

Weight 0.002 kg

#### IP-Rating

Front protection IP 40

#### Connection Method

Terminal Solder 2.0 x 0.5mm

#### Actuator

Switching action Momentary

#### Switching element

Switching system Low-level element  
Contacts 1 NO  
Switching voltage 50 V AC  
Switching current 0.1 A  
Contact material Gold

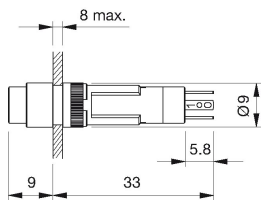
#### Function

Illuminated pushbutton

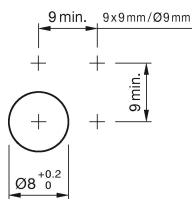
# EAO – Your Expert Partner for Human Machine Interfaces

19-451.035 - Illuminated pushbutton actuator

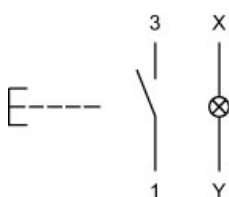
## Dimensions



## Mounting cut-outs



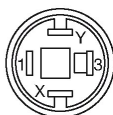
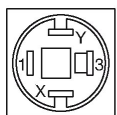
## Wiring diagram



## Component layout

9 x 9 mm

Ø9 mm



## Legend

Contacts: NO = Normally open

Switching action: B = Momentary