

# Features

## Regulated Converters

- 2:1 and 3:1 Wide Input Voltage Ranges
- 1kVDC, 2kVDC and 3kVDC Isolation
- UL94V-0 Package Material
- Continuous Short Circuit Protection
- Low Ripple and Noise
- Remote On/Off Control
- Efficiency to 83 %

### Description

Very high power density, 2:1 or 3:1 input voltage range and a wide operating temperature range -40°C to +71°C and extra features such as On/Off control are just some of the characteristics of this converter which is ideal for highly sophisticated industrial designs. The RS3 is available with 2kV or 3kV isolation options (1kVDC is standard)

### Selection Guide

| Part Number         | Input Voltage Range (VDC) | Rated Output Voltage (VDC) | Output Current Full Load (mA) | Efficiency typ. (%) | Max Capacitive Load <sup>(1)</sup> |
|---------------------|---------------------------|----------------------------|-------------------------------|---------------------|------------------------------------|
| RS3-xx3.3S (H2/H3)  | 4.5-9, 9-18               | 3.3                        | 600                           | 73-75               | 4700µF                             |
|                     | 18-36, 36-72              |                            |                               | 77-78               |                                    |
| RS3-xx05S (H2/H3)   | 4.5-9, 9-18               | 5                          | 600                           | 76-79               | 4700µF                             |
|                     | 18-36, 36-72              |                            |                               | 80-81               |                                    |
| RS3-xx09S (H2/H3)   | 4.5-9, 9-18               | 9                          | 333                           | 77-80               | 3300µF                             |
|                     | 18-36, 36-72              |                            |                               | 81-82               |                                    |
| RS3-xx12S (H2/H3)   | 4.5-9, 9-18               | 12                         | 250                           | 80-81               | 2200µF                             |
|                     | 18-36, 36-72              |                            |                               | 83                  |                                    |
| RS3-xx15S (H2/H3)   | 4.5-9, 9-18               | 15                         | 200                           | 80-81               | 2200µF                             |
|                     | 18-36, 36-72              |                            |                               | 83                  |                                    |
| RS3-xx3.3D (H2/H3)  | 4.5-9, 9-18               | ±3.3                       | ±300                          | 73-75               | ±2200µF                            |
|                     | 18-36, 36-72              |                            |                               | 75                  |                                    |
| RS3-xx05D (H2/H3)   | 4.5-9, 9-18               | ±5                         | ±300                          | 76-80               | ±2200µF                            |
|                     | 18-36, 36-72              |                            |                               | 80-81               |                                    |
| RS3-xx09D (H2/H3)   | 4.5-9, 9-18               | ±9                         | ±167                          | 77-81               | ±2200µF                            |
|                     | 18-36, 36-72              |                            |                               | 81                  |                                    |
| RS3-xx12D (H2/H3)   | 4.5-9, 9-18               | ±12                        | ±125                          | 78-83               | ±1000µF                            |
|                     | 18-36, 36-72              |                            |                               | 83                  |                                    |
| RS3-xx15D (H2/H3)   | 4.5-9, 9-18               | ±15                        | ±100                          | 79-83               | ±1000µF                            |
|                     | 18-36, 36-72              |                            |                               | 83                  |                                    |
| RS3-xx3.3SZ (H2/H3) | 9-27                      | 3.3                        | 600                           | 73                  | 4700µF                             |
|                     | 20-60                     |                            |                               | 74                  |                                    |
| RS3-xx05SZ (H2/H3)  | 9-27                      | 5                          | 600                           | 76-79               | 4700µF                             |
|                     | 20-60                     |                            |                               | 78                  |                                    |
| RS3-xx09SZ (H2/H3)  | 9-27                      | 9                          | 333                           | 77                  | 3300µF                             |
|                     | 20-60                     |                            |                               | 79                  |                                    |
| RS3-xx12SZ (H2/H3)  | 9-27                      | 12                         | 250                           | 80                  | 2200µF                             |
|                     | 20-60                     |                            |                               | 80                  |                                    |
| RS3-xx15SZ (H2/H3)  | 9-27                      | 15                         | 200                           | 80                  | 2200µF                             |
|                     | 20-60                     |                            |                               | 80                  |                                    |
| RS3-xx3.3DZ (H2/H3) | 9-27                      | ±3.3                       | ±300                          | 73                  | ±2200µF                            |
|                     | 20-60                     |                            |                               | 74                  |                                    |
| RS3-xx05DZ (H2/H3)  | 9-27                      | ±5                         | ±300                          | 77                  | ±2200µF                            |
|                     | 20-60                     |                            |                               | 78                  |                                    |
| RS3-xx09DZ (H2/H3)  | 9-27                      | ±9                         | ±167                          | 79                  | ±2200µF                            |
|                     | 20-60                     |                            |                               | 79                  |                                    |
| RS3-xx12DZ (H2/H3)  | 9-27                      | ±12                        | ±125                          | 80                  | ±1000µF                            |
|                     | 20-60                     |                            |                               | 80                  |                                    |
| RS3-xx15DZ (H2/H3)  | 9-27                      | ±15                        | ±100                          | 80                  | ±1000µF                            |
|                     | 20-60                     |                            |                               | 80                  |                                    |

No suffix is standard isolation (1kVDC) e.g, RS3-0505S

\*add suffix /H2 or /H3 for 2kVDC or 3kVDC isolation, e.g, RS3-0505S/H2, R3S-0505DZ/H3

# ECONOLINE

## DC/DC-Converter

with 3 year Warranty

# RECOM

## 3 Watt SIP8 Isolated Single & Dual Output

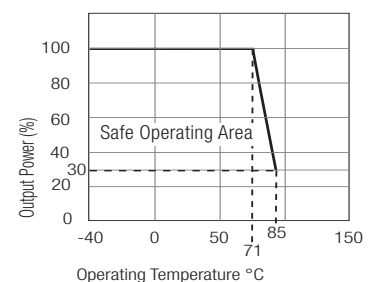


**EN-60950-1 Certified**  
**EN-60601-1 Certified\***  
(\* /H suffix)

# RS3

## Derating-Graph (Ambient Temperature)

### RS3-(Z)S\_D



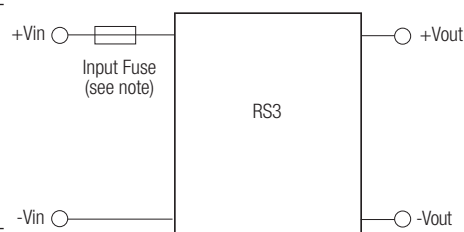
**2:1 Input** (RS3-S/D)      **3:1 Input** (RS3-SZ/DZ)  
 xx = 4.5-9Vin = 05      xx = 9-27Vin = 24  
 xx = 9-18Vin = 12      xx = 20-60Vin = 48  
 xx = 18-36Vin = 24  
 xx = 36-72Vin = 48

Refer to Application Notes

**Electrical Specifications** (measured at  $T_A = 25^\circ\text{C}$ , at nominal input voltage and rated output current unless otherwise specified)

|   |  |                       |                             |
|---|--|-----------------------|-----------------------------|
| Input Voltage Range                                       |  | 2:1 and 3:1           |                             |
| Output Accuracy   | Nominal $V_{in}$ and full load                               | $\pm 2\%$ typ.        |                             |
| Line Voltage Regulation                                   | LL to HL, full load  | $\pm 0.5\%$ max.      |                             |
| Load Voltage Regulation                                   | 20% to 100% full load  | $\pm 0.5\%$ typ.      |                             |
| Minimum Load  |  | 10% <sup>(2)</sup>    |                             |
| Output Ripple and Noise                                   | 20MHz limited  | 50mVp-p max.          |                             |
| Switching Frequency                                       | 20% to 100% full load  | 200kHz typ.           |                             |
| Efficiency at Full Load                                   |  | see Selection Guide   |                             |
| Quiescent Current   | RS3-05xxS_D  | 35mA typ.             |                             |
| Nominal input Voltage<br>(Standard, /H2 and /H3)          | RS3-12xxS_D  | 25mA typ.             |                             |
|   | RS3-24xxS_D, SZ_DZ   | 20mA typ.             |                             |
|   | RS3-48xxS_D, SZ_DZ   | 10mA typ.             |                             |
| Isolation Voltage   | Standard   | (tested for 1 second) | 1000VDC                     |
|   |  | (rated for 1 minute*) | 500VAC / 60Hz               |
|   | /H2 Version  | (tested for 1 second) | 2000VDC                     |
|   | /H3 Version  | (tested for 1 second) | 3000VDC                     |
|   |  | (rated for 1 minute*) | 1500VAC / 60Hz              |
| Isolation Capacitance (2:1 and 3:1)<br>(tested at 100kHz) | H1   | 200pF max.            |                             |
|   | H2/H3  | 30pF max.             |                             |
| Isolation Resistance                                      |  | 1G $\Omega$ min.      |                             |
| Short Circuit Protection (see note)                       |  | Continuous            |                             |
| Operating Temperature Range                               |  | -40°C to +71°C        |                             |
| Storage Temperature Range                                 |  | -55°C to +125°C       |                             |
| Relative Humidity   |  | 95% RH                |                             |
| Package Weight  |  | 4.7g                  |                             |
| Packing Quantity  |  | 22 pcs per Tube       |                             |
| MTBF (+25°C)<br>(+71°C)                                   | Detailed Information see<br>Application Notes chapter "MTBF" | using MIL-HDBK 217F   | 3303 x10 <sup>3</sup> hours |
|   |  | using MIL-HDBK 217F   | 745 x10 <sup>3</sup> hours  |

**Typical Application**



\*\*Any data referred to in this datasheet are of indicative nature and based on our practical experience only. For further details, please refer to our Application Notes.

**Certifications**

|                   |                                    |   |
|-------------------|------------------------------------|---|
| EN General Safety | Report: SPCLVD1212007              | EN60950-1:2006 + A11:2009+A1:2010+A12:2011                              |
| EN Medical Safety | Report: MDD1205098-3 + RM1205098-3 | IEC/EN 60601-1 3rd Edition<br>Medical Report + ISO14971 Risk Assessment |

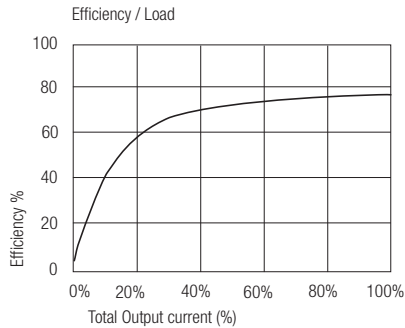
Note: To protect the converter under all fault conditions, an input fuse is required. Quick-blow fuses should be rated at 2x-3x the normal input current, time-delay fuses at 1.5x the normal input current.

**Notes**

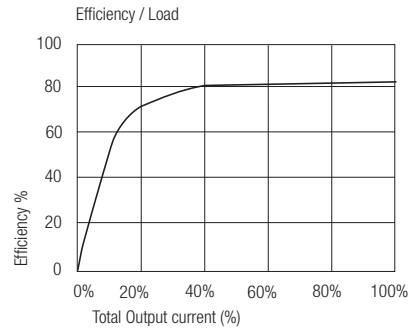
- Note 1: Maximum capacitive load is defined as the capacitive load that will allow start up in under 1 second without damage to the converter
- Note 2: The RS3 series require a minimum of 10% loading on the output to maintain specified regulation. Operating under un-load condition will not damage these devices, however they may not meet all listed specifications.

**Typical Characteristics**

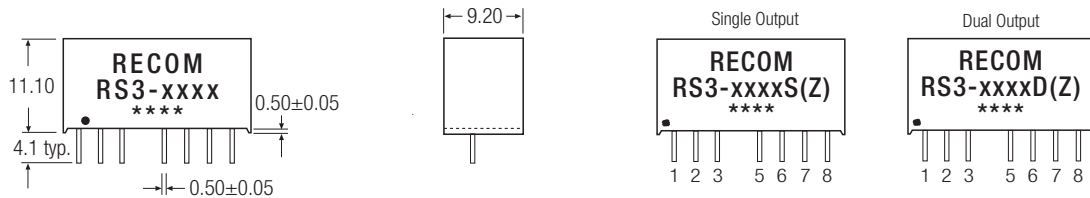
## RS3-0505S



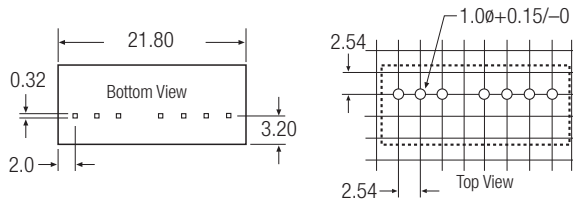
## RS3-4805D



**Package Style and Pinning (mm)**



**Recommended Footprint Details**



XX.X ± 0.5 mm  
XX.XX ± 0.25 mm

**Pin Connections**

| Pin # | Single | Dual  |
|-------|--------|-------|
| 1     | -Vin   | -Vin  |
| 2     | +Vin   | +Vin  |
| 3     | CTRL   | CTRL  |
| 5     | NC     | NC    |
| 6     | +Vout  | +Vout |
| 7     | -Vout  | Com   |
| 8     | NC     | -Vout |

NC = No Connection

**Pin 8 (NC\*)** This pin is used internally and must have no external connection.

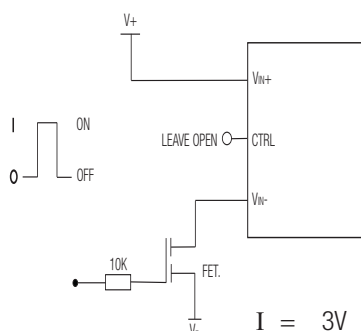
**Pin 5 (NC)** Not connected internally.

**Pin 3 (CTRL)**

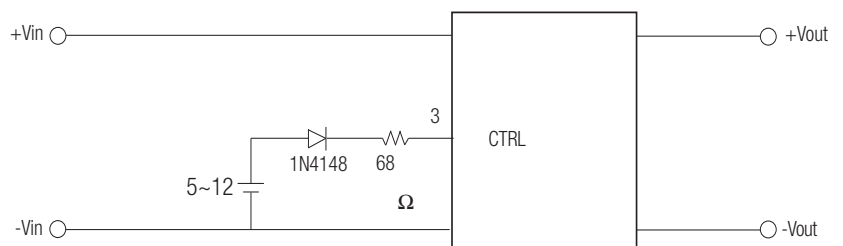
This pin provides an Off function which puts the converter into a low power mode. When the pin is 'high' the converter is OFF and when the pin is high 'Z' the converter is ON. There is no allowed low state for this pin.

**Application Examples**

**ON/OFF CONTROL**



I = 3V  
0 = 0.5V or GND



Remote ON/OFF

ON: open or high impedance  
OFF: external 5~12Vdc and 1N4148+ 68Ω resistor

The product information and specifications are subject to change without prior notice. All products are designed for non-safety critical commercial and industrial applications. The Buyer agrees to implement safeguards that anticipate the consequences of any failures that might cause harm, loss of life and/or damage property.