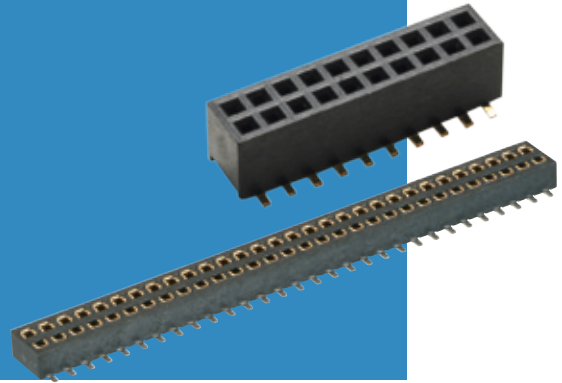


# Archer Connectors – M50

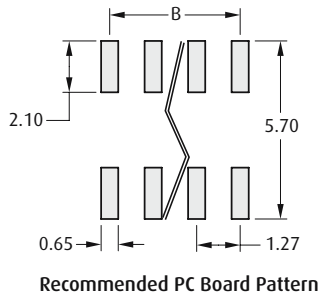
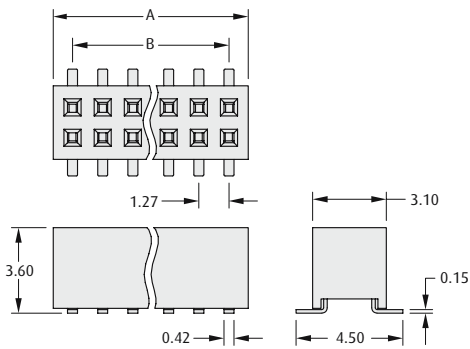


## Female Vertical Surface Mount, Low Profile

- Suitable for use with male connectors on pages 108 to 109.
- Locating pegs (posts) available to ensure correct positioning on the board.
- Dual entry connector can be used as either top or bottom entry.



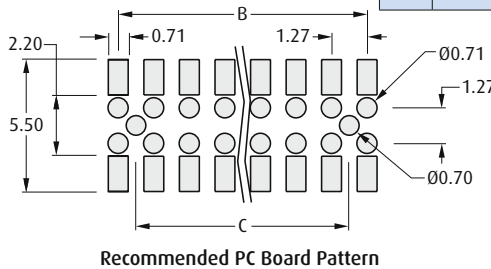
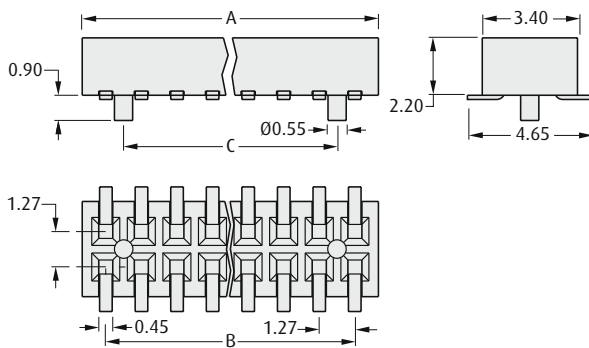
### 3.6mm HIGH WITHOUT POSTS



#### CALCULATION

<b>A</b>	$B + 1.73$
<b>B</b>	$1.27 \times (\text{No. of contacts per row} - 1)$

### 2.2mm HIGH WITH POSTS, DUAL ENTRY



#### CALCULATION

<b>A</b>	$B + 1.67$
<b>B</b>	$1.27 \times (\text{No. of contacts per row} - 1)$
<b>C</b>	$B - 1.27$

### HOW TO ORDER

**M50 - 31 X XX XX**

#### SERIES CODE

#### TYPE

<b>2</b>	3.6mm high without posts
<b>5</b>	2.2mm high with posts, dual entry

#### NO. OF CONTACTS PER ROW

**03 to 50**

#### FINISH

<b>42</b>	Gold + Tin (M50-315)	
<b>45</b>	Gold (M50-312)	

All dimensions in mm.

1.27mm (.050") PITCH