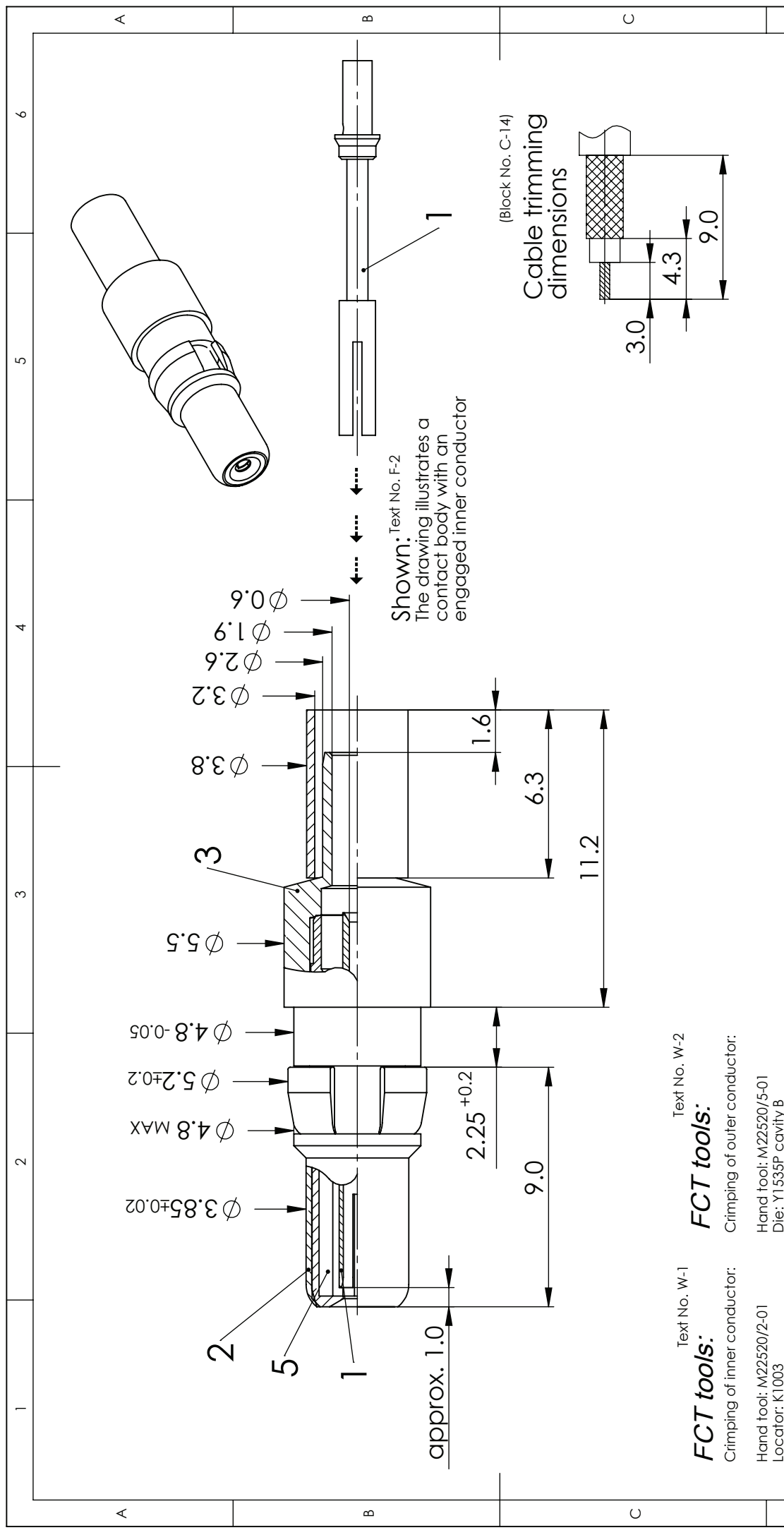


COMMENT:  
 ALL RIGHTS ARE RESERVED BY US FOR THIS DRAWING. WITHOUT OUR PRIOR CONSENT,  
 IT MAY NEITHER BE DUPLICATED NOR MADE AVAILABLE TO A THIRD PARTY.  
 AND IT ALSO MAY NOT BE IMPROPERLY USED BY THE RECEIVER, OR A THIRD PARTY.



Text No. W-1

**FCT tools:**

Crimping of inner conductor:

- Hand tool: M22520/2-01
- Locator: K1003
- Pneumatic crimp tool: WA22
- Locator: K1003

Text No. W-2

**FCT tools:**

Crimping of outer conductor:

- Hand tool: M22520/5-01
- Die: Y1535P cavity B
- Pneumatic crimp tool: HX23 (replacement for PH4001) ②
- Extraction tool: DRK38

IMPEDANCE		75 Ohm		COAXIAL CONTACT		SCALE		CABLE	
FOR		D-SUB		DRAWN		5:1		RG179BU, RG187AU, Belden 9221	
DIMENSIONS IN MM				NAME / DATE				DATA SHEET	
MATERIAL + FINISH SEE EXTRA SHEET				ffuhrmann					
UNLESS OTHERWISE SPECIFIED DIMENSIONS FOR REFERENCE ONLY				05-07-2006					
2		16-10-2012		23305		INDEX		PART NO.	
REV.		DATE		INDEX		ORIGINAL: DIN A4-DRAWING AS A FILE		FMS002P	
1		2		1		2		REV.	
								2	
								PAGE: 1/1	