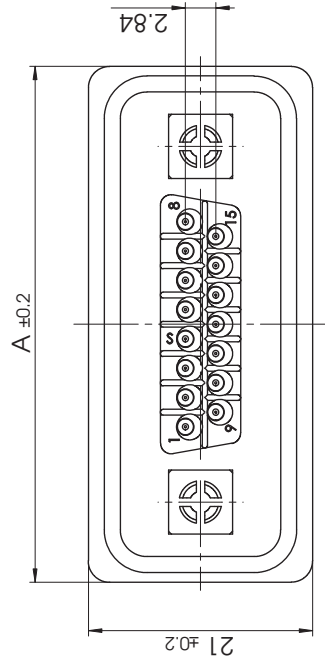
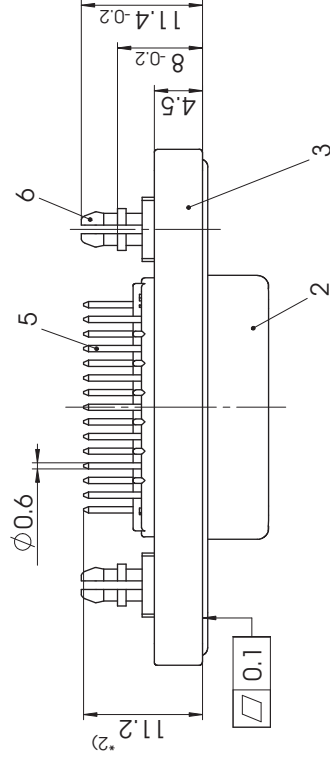
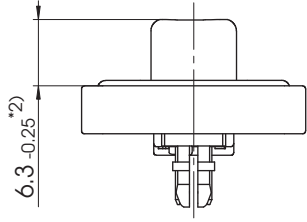
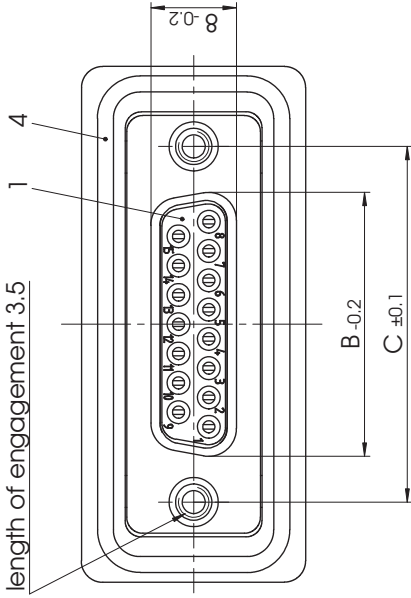


4-40UNC-2B  
length of engagement 3.5



# FWDRXX \*1) S1A

e.g. FWDR15S1A

\*1) xx No. of contacts 09, 15 or 25

xx	A mm	B mm	C mm	*øE mm	*øF mm
09	40	16.4	25		
15	48.3	24.7	33.3	ø1	ø3
25	62	38.5	47.04		

\*PCB hole patterns, øE and øF on supplement AM0023

\*2) Dimension starts from front surface of shell (Part-No. 2)

max. torque are 40 Ncm  
D-Sub connector with watertight frame,  
Protection standard IP67, 100% checked  
according to DIN EN 60529 (compl. mounted)

No.	St.	Part	Type Description / Material	SCALE	TITLE
6	2	Snap-in bolt	PCB 1.6mm 4-40 / Brass	2.1	Waterproof Connector System
5	xx	Signal contact	SI / Brass		
4	1	O-ring seal	Silicone / UL94V-0		
3	1	Watertight frame	PBT		
2	1	Shell	Brass		
1	1	Insulator	PBT (-25°C - +70°C)		
Measurement without tolerance acc. to ISO 2768-m NAME / DATE fctgroup schneider 10.07.2013 CHECKED Arke Meyer-Richter 11.07.2013					

REV.	DATE	CH.-NO.	DWG.NO.	REPLACEMENT FOR:	PAGES
1			FWDRxxS1A		1