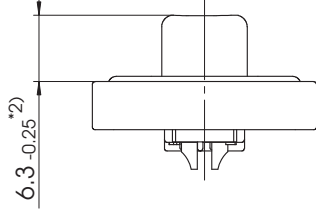
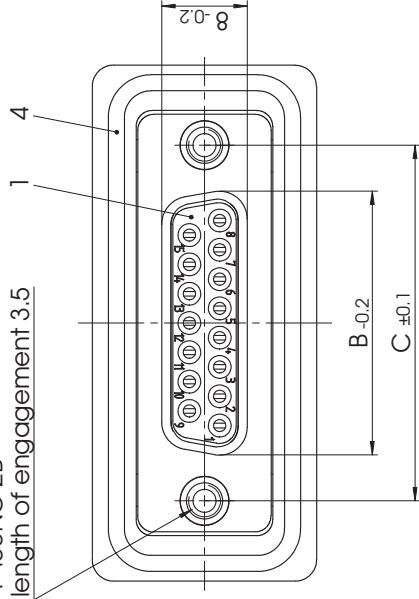


4-40UNC-2B
length of engagement 3.5



FWDRXX *1) SA

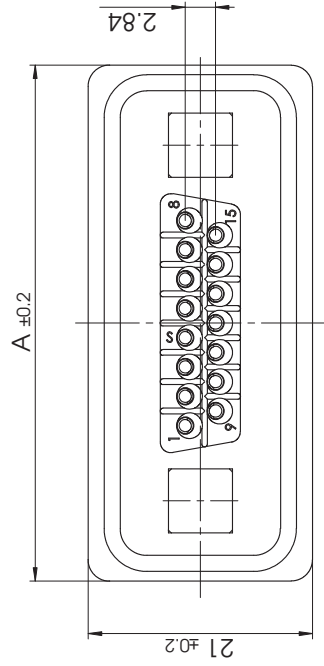
e.g. FWDR15SA

*1) xx No. of contacts 09, 15 or 25

xx	A mm	B mm	C mm
09	40	16.4	25
15	48.3	24.7	33.3
25	62	38.5	47.04

*2) Dimension starts from front surface of shell (Part-No. 2)

max. torque are 40 Ncm
D-Sub connector with watertight frame,
Protection standard IP67, 100% checked
according to DIN EN 60529 (compl. mounted)



6	2	Clinch nut	WD 4-40 / Brass	tin plated
5	xx	Signal contact	S0 / Brass	AuroPur / 0.1-0.2µm Au / AWG 20
4	1	O-ring seal	Silicone / UL94V-0	red
3	1	Watertight frame	PBT	black
2	1	Shell	Brass	tin plated
1	1	Insulator	PBT (-25°C - +70°C)	red
No.	St.	Part	Type Description/Material	Surface plating/Colour/Class
			Measurement without tolerance acc. to ISO 2768-m	SCALE 2:1
			NAME / DATE	
			DRAWN	titelund.schneider 10.07.2013
			CHECKED	Arke/Meyer-Richter 11.07.2013
			DWG.NO.	FWDRxxSA
			REV.	1
			REPLACEMENT FOR:	PAGES 1

Waterproof Connector System

ORIGINAL: DIN A3-DRAWING AS A FILE

CH.-NO.

DATE

3

2

1

4

COMMENT:
ALL RIGHTS ARE RESERVED BY US FOR THIS DRAWING. WITHOUT OUR PRIOR CONSENT,
IT MAY NOT BE REPRODUCED NOR MADE AVAILABLE TO A THIRD PARTY.
AND IT ALSO MAY NOT BE IMPROPERLY USED BY THE RECEIVER, OR A THIRD PARTY.