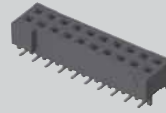
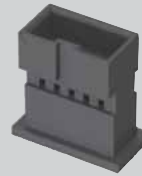




ITD2-05-D



S2M-110-02-L-D

T1M82-L-2426-01-L

(2,00 mm) .0787"

ITD2, T1M82, S2M SERIES

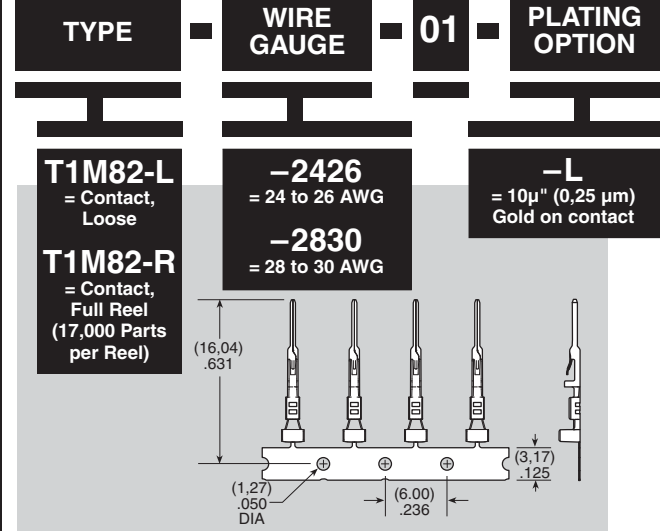
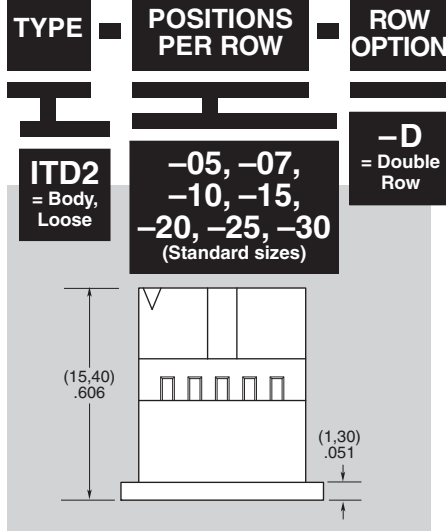
# DISCRETE WIRE COMPONENTS & TOOLING

## SPECIFICATIONS

For complete specifications see [www.samtec.com?TD2](http://www.samtec.com?TD2) or [www.samtec.com?T1M82](http://www.samtec.com?T1M82)

## TOOLING

- Hand Tool:  
CAT-HT-182-2430-11
- Mini Applicator (24-26 AWG):  
CAT-MA-182-2426-XX-01
- Mini Applicator (28-30 AWG):  
CAT-MA-182-2830-XX-01



Mates with:  
T2SD

## SPECIFICATIONS

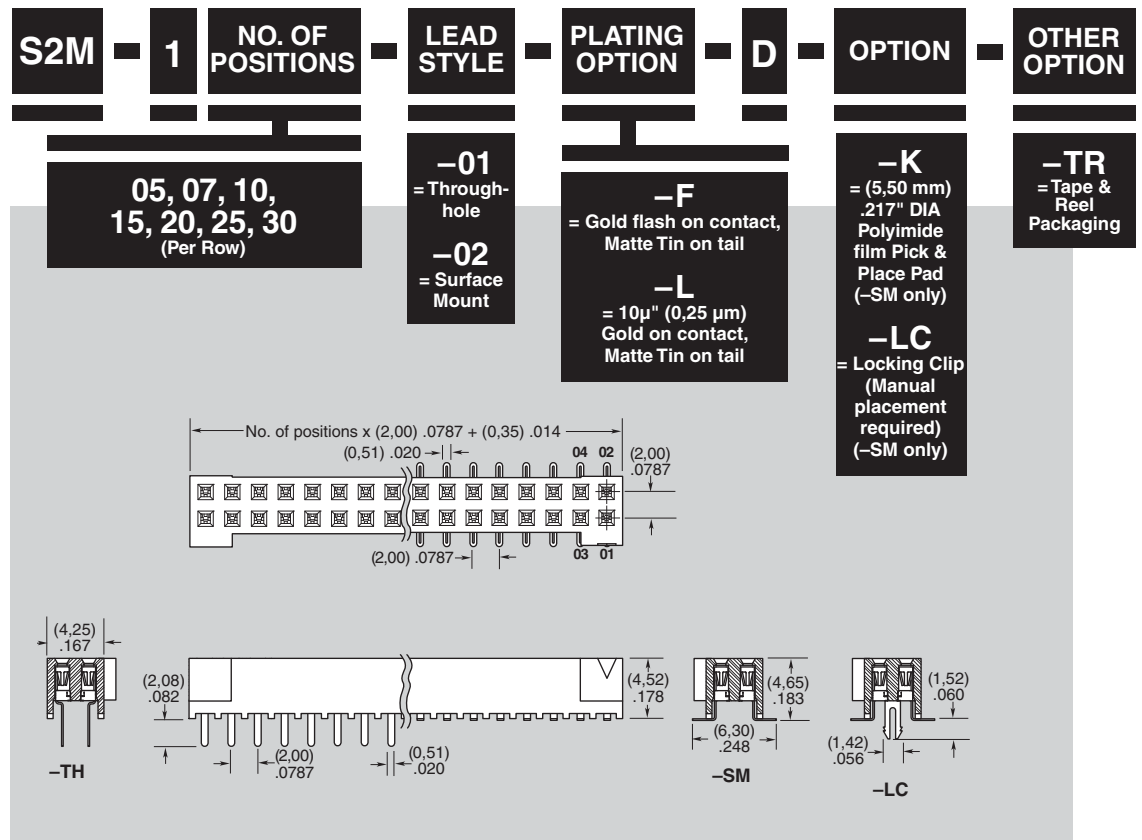
For complete specifications and recommended PCB layouts see [www.samtec.com?S2M](http://www.samtec.com?S2M)

**Insulator Material:** Black Liquid Crystal Polymer  
**Contact Material:** BeCu  
**Plating:** Sn or Au over 50µ" (1,27 µm) Ni  
**Operating Temp Range:** -55°C to +125°C  
**Contact Resistance:** 10 mΩ max  
**Insertion Depth:** (3,05 mm) .120" to (3,25 mm) .128"  
**Insertion Force:** (Single contact only) 2.0 oz (0,56 N) average  
**Withdrawal Force:** (Single contact only) 1.5 oz (0,42 N) average  
**Max Cycles:** 100 with 10µ" (0,25 µm) Au  
**RoHS Compliant:** Yes

**Processing:**  
**Lead-Free Solderable:** Yes  
**SMT Lead Coplanarity:** (0,10 mm) .004" max

## RECOGNITIONS

For complete scope of recognitions see [www.samtec.com/quality](http://www.samtec.com/quality)



Due to technical progress, all designs, specifications and components are subject to change without notice.

[WWW.SAMTEC.COM](http://WWW.SAMTEC.COM)