



BMP®21-PLUS Label Printer

Tough on the Outside. Smart on the Inside. Our lightest and easiest-to-operate printer, the BMP®21-PLUS labeler has drop-lock-and-print cartridges, a rechargeable lithium-ion battery, protective rubber bumpers and a two-year warranty.

As a one-per technician printer, it is toolbox ready and ideal for creating basic labels in lower volumes for wire and cable, panel, equipment and general industrial labels

Printer:	
Printer Name	BMP®21-PLUS Label Printer
Resolution	Thermal transfer, 203 dpi
Max Lines of Print	4
Print Speed	10mm/sec (0.4 in/sec)
Keyboard Type	ABC or Cyrillic
Dimensions:	9.5" x 2.5" x 4.5" (236.22 x 63.5 x 114.3 mm)
Weight	1.66 lbs (0.75 kg) (with AA Alkaline Batteries and Media Roll)
Warranty	2 Years
Overmold/Rugged	Yes
Operating Temp	4° to 43° C (40° to 110° F)
Humidity	10% to 90% (non-condensing)
Storage Temp	-18° to 43° C (0° to 110° F)
Continuous or Die Cut Labels	Continuous Labels Only
Portability	Yes
Features:	
Memory	12 Labels
User Profiles	1
Cutter Type	Straight cut, single hand manual actuate
Cut Options	User adjustable: cut between or at end of print job
Label Retention After Cut	Yes
Labels Per Day (Average)	100
Battery Life Indicator	Yes
Label Odometer (Supply Remaining)	No
Wearability Options	Magnet Attachment, Multi-Tool (Magnet / Flashlight / Stand Combo) and Lanyard
Drop Test	Transit drop per MIL-STD-810G 5.16.6 S4.6.5 Drop tested: 6 foot drop
Languages	English, Dutch, German, Italian, French, Spanish Portuguese, Russian (separate keyboard version)
Units	User adjustable: inches or millimeters

Power:	
Power Supply	6 AA batteries, AC adapters: US 110V, UK 240V, Europe 220V, or Lithium Ion Rechargeable Battery
Battery Included	No
Battery Life	Li-ION Battery: Output of 2000 2" (50.8mm) labels 6 AA Batteries: Output of 1800 2" (50.8mm) labels
Rechargeable Battery	Lithium Ion 11.7Wh (DC 7.2V 1620 mAh)
Battery Charging	External via AC
Re-Charge Time (estimated)	2.5 hours
Power Source Voltage	110-240
Auto Shut Off	10 minutes
Print Functions:	
Wire and Cable Wrap Mode	Yes
Cable Flag Type	Yes
Terminal Block Mode	Yes
Patch Panel (Circuit Breaker) Mode	Yes
Banner (Landscape)	Yes
Banner (Portrait)	Yes
Print Preview	No
Multi-Label View	No
Customizable Library	No
Serialization	Yes
Barcoding	39 and 128
Date/Time Stamp/ Real Time Clock	Yes
Fixed Length	Yes
Mirror Print	No
Vertical Print	Yes
Reverse Print	No
Rotate Print	No
Auto Format	Yes
Alignment	Center justified

Specifications subject to change without notice.

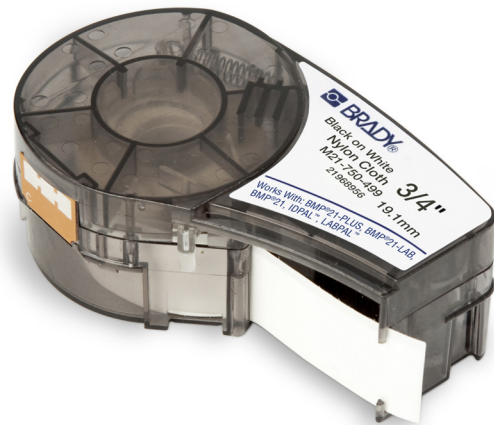
BMP®21-PLUS Label Printer Specifications (continued)

Print Functions: (continued)	
Multi-Copy Printing	Up to 99 Copies
Multi-Line Print	Yes
Frame Feature	No
Save Files	Yes
Display:	
LCD Type	Liquid Crystal, Custom
LCD size	2" x 1" (50.8mm x 25.4mm)
Resolution	132 x 64 pixels
LCD Characters	13 char x 3 lines
Backlight	Yes, user adjustable
Communication and Interface	
Connectivity:	Not Applicable
PC Connectivity	No
Import Data	No
Import Manufacturer Templates / Graphics	No
Software Compatibility	Not applicable
Media:	
Type	Cartridge (media and ribbon combined)
Load Labels Location	Top
Label Output Location	Right Side
Media System	M21 Series Cartridges
Memory in Cartridge	No
Maximum Print Width	0.63" (16mm)
Maximum Print Length	36.0" (914.4mm)
Maximum Supply Width	0.75" (19.05mm)

Media Widths	0.250", 0.375", 0.500", 0.750" (6.4, 9.5, 12.7, 19.1 mm)
Included Media	M21-750-499 (0.75" x 16" (19.05mm x 4.9m) Black on White Nylon Tape)
Number of Stock Parts	70+
Available Media Colors	Black on: White, Yellow, Clear, Orange, Purple, Brown, Grey. White on: Blue, Green Red, Clear or Black
Cartridge Width Detection	Yes
Cartridge Setting Detection	Yes
Custom Labels	No
Color Print Capability	Single / Mono Color
Compliance	
Agency Approvals	UL, CE, EAC, FCC Class B, ICES-003, NOM, RCM
RoHS compatibility	Pass 2011/65/EU
Patents	One or more patents apply including: US 8.322.936; 6.604.874; 6.732.619
Trade	Harmonization Code (HTS Schedule A or B) / 844.39.9000; Country of Origin: Malaysia (printer); ECCN: EAR99
Fonts, Graphics, Symbols	
Text Sizes	6-40 pt with Autosizing
Text Attributes	Regular, Bold
Number of Fonts	1 - Brady Standard Font
Number of Symbols	104
Symbol Categories	Arrows, Datacomm, Electrical, Greek, Home Electrical, International, Misc, Warning

BMP®21-PLUS Label Printer Media Offering

B-342 PermaSleeve® Heat Shrink Tubing	✓
B-423 Permanent Polyester	✓
B-427 Self Laminating Vinyl	✓
B-430 Clear Polyester	✓
B-461 Clear Polyester	✓
B-488 High Performance Polyester	✓
B-499 Nylon Cloth	✓
B-595 Indoor/Outdoor Vinyl	✓
B-7425 Polypropylene	✓



For more information on the
BMP®21-PLUS Label Printer and media, visit:
BradyID.com/bmp21plus

USA

Customer Service: 1-888-272-3946
Inside Sales: 1-888-311-0775
www.BradyID.com

Canada

Customer Service:
1-800-263-6179
www.BradyCanada.ca

Mexico

1-800-262-7777
Inside Sales: 1-800-262-7777 ext 177
www.BradyLatinAmerica.com



Specifications subject to change without notice.

© 2014 Brady Worldwide Inc. ALL RIGHTS RESERVED