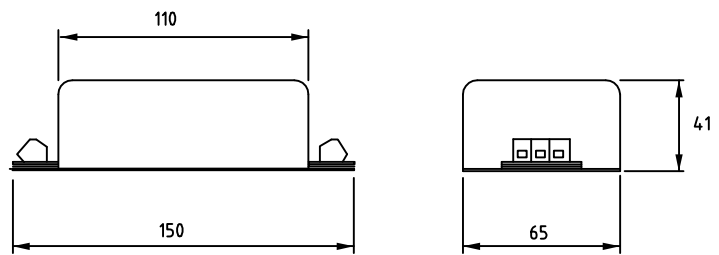
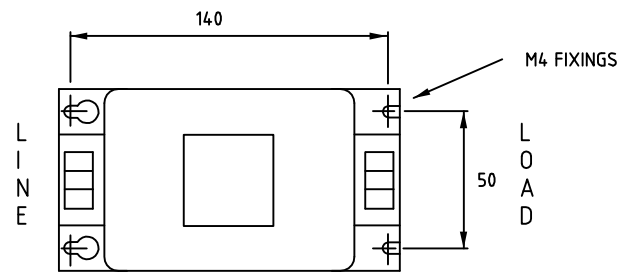
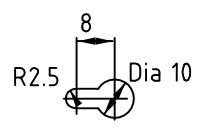


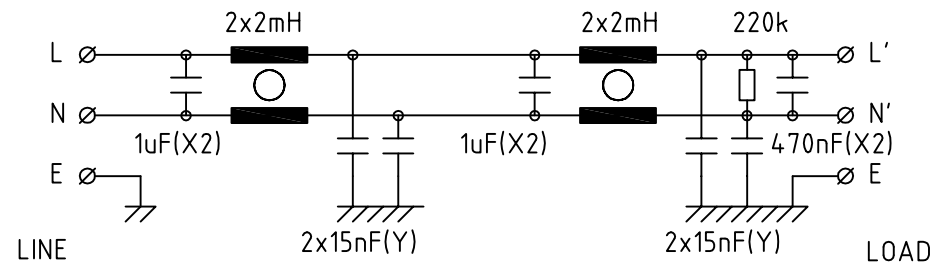
KEYWAY



SPECIFICATION

RATED VOLTAGE	250V
CURRENT	6A AT 40 Deg. C
FREQUENCY	50/60Hz
TEMPERATURE RANGE	-25 TO 85 Deg. C
LEAKAGE CURRENT	3mA AT 250V 50Hz
TEST VOLTAGE	2kV DC

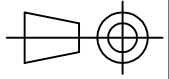
ELECTRICAL SPECIFICATION



MINIMUM INSERTION LOSS

Frequency Hz	30k	100k	150k	300k	10M
Common Mode dB	13	55	69	>80	>80
Differential dB		36	50	>60	>60

ALL DIMENSIONS IN MM / ANGLES IN DECIMAL DEGREES



DrgNo MDF06-GS		TITLE 250V 6A 50/60HZ			
		ISSUE 3		GENERAL SPECIFICATION FOR MDF06	
				CUSTOMER	
				FILTER REF	

Sheet 1 of 1 | Aprvd Date 16/07/01 | Aprvd By SW | Drwn by BFS | SCALE NTS | CNN--- | Location N: \DWG\GS\GS000243