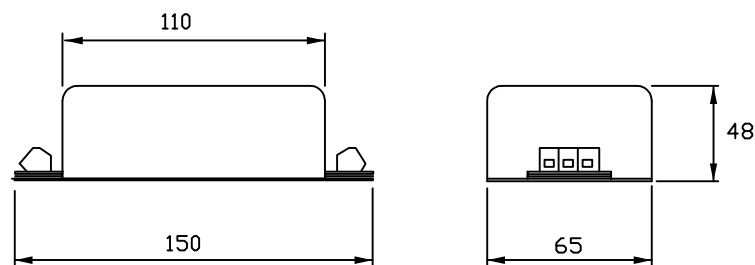
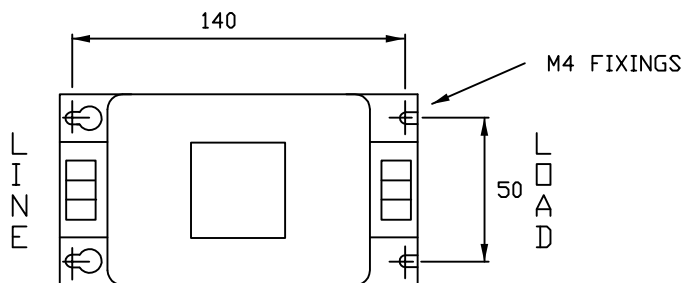
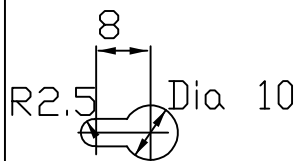


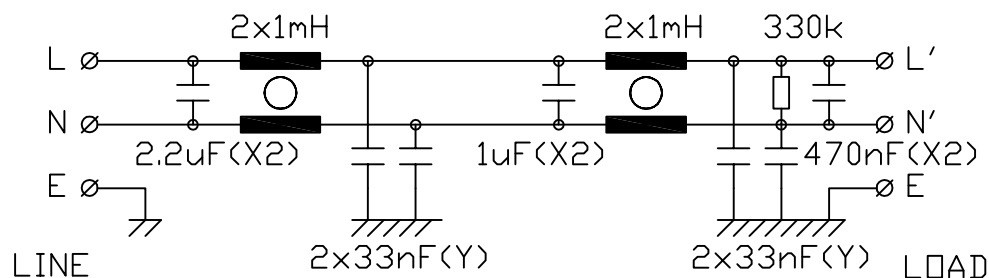
KEYWAY



SPECIFICATION

RATED VOLTAGE	250V
CURRENT	16A AT 40 Deg. C
FREQUENCY	50/60Hz
TEMPERATURE RANGE	-25 TO 85 Deg. C
LEAKAGE CURRENT	6.6mA AT 250V 50Hz
TEST VOLTAGE	2kV DC

ELECTRICAL SCHEMATIC



MINIMUM INSERTION LOSS

Frequency Hz	30k	100k	150k	300k	10M
Common Mode dB	13	55	70	>80	>80
Differential dB		31	45	>55	>55

DrgNo MDF16-GS

TITLE SINGLE PHASE 250V 16A 50/60HZ MAINS FILTER

ALL DIMENSIONS IN MM
ANGLES IN DECIMAL DEGREES

ROXBURGH EMC



ISSUE

2

GENERAL SPECIFICATION
FOR MDF16

CUSTOMER

REFERENCE

Aprvd Date 10/03/03

Aprvd By JRT

Drwn by SW

Scale: NTS

Sheet 1 / 1