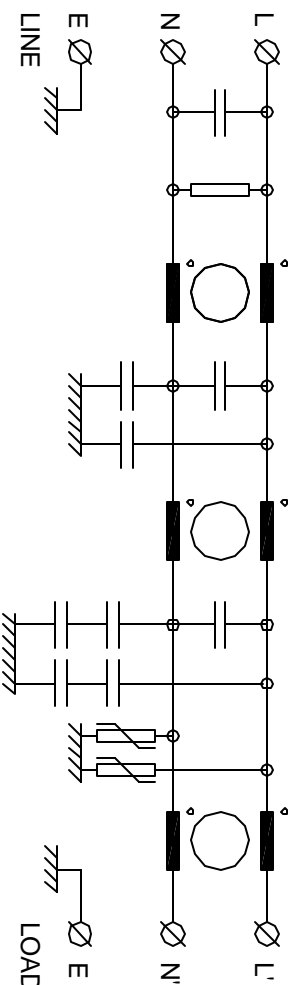


SPECIFICATION

VOLTAGE 250VAC
 FREQUENCY 50/60Hz
 CURRENT 10A @ 50 deg C
 OVERLOAD CURRENT 150% 1MIN. 200% 1SEC
 TEMPERATURE -25 TO 85 deg C
 LEAKAGE CURRENT:-
 AS PER IEC950 = 45mA @ 240V 50Hz
 HUMIDITY 90% RH
 VIBRATION 10-200Hz 1.8G
 SURGE 6kV 1.2/50uS
 ELECTRIC STRENGTH 2500VAC/1min.
 POWER LOSS (FULL LOAD) = 2.7W
 TERMINALS M4 SCREW CROSS/SLOT 2 x 2.5mm sq.
 WEIGHT 0.95kg
 BACK MOUNTING 4x M4
 SIDE MOUNTING 2x M6

FILTER MEASURED AT 1KHz

TOTAL L = 10.3mH, X CAP = 3.3uF, Y CAP = 1.1uF, RES = 150K Ohm



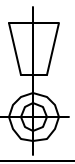
ATTENUATION

COMMON MODE - 80dB AT 150kHz
 DIFFERENTIAL MODE - 50dB AT 150kHz
 DESIGNED TO MEET EN55022B (DOMESTIC)
 WHEN SCREENED MOTOR CABLE USED

CONSTRUCTION

PERFORATED ALUMINIUM BODY FOR AIR COOLING,
 ALL COMPONENTS PCB MOUNTED

ALL DIMENSIONS IN MM / ANGLES IN DECIMAL DEGREES



FOXBURGH ELECTRONICS LTD

TITLE SINGLE PHASE 10A MAINS FILTER

Dr gNo
MIF10-GS

SS

2

GENERAL SPECIFICATION
 FOR MIF10

CUSTOMER
 REFERENCE