

SPECIFICATION

VOLTAGE 500VAC  
 FREQUENCY 50/60Hz  
 CURRENT 100A @ 50 deg C  
 OVERLOAD CURRENT 150% 1MIN. 200% 1SEC  
 TEMPERATURE -25 TO 85 deg C  
 LEAKAGE CURRENT:-  
 AS PER IEC950 = 73mA @ 500V 50Hz  
 HUMIDITY 90% RH  
 VIBRATION 10-200Hz 1.8G  
 SURGE 4kV 1.2/50uS  
 ELECTRIC STRENGTH 2500VAC/1min.  
 POWER LOSS (FULL LOAD) = 75W  
 WEIGHT 9.5kg  
 BACK MOUNTING 4x M6 (DUAL KEYWAY)  
 SIDE MOUNTING 4x M8

ATTENUATION

COMMON MODE - 60dB AT 150kHz  
 DIFFERENTIAL MODE - 40dB AT 150kHz  
 DESIGNED TO MEET EN55022B (DOMESTIC)  
 WHEN SCREENED MOTOR CABLE USED

CONSTRUCTION

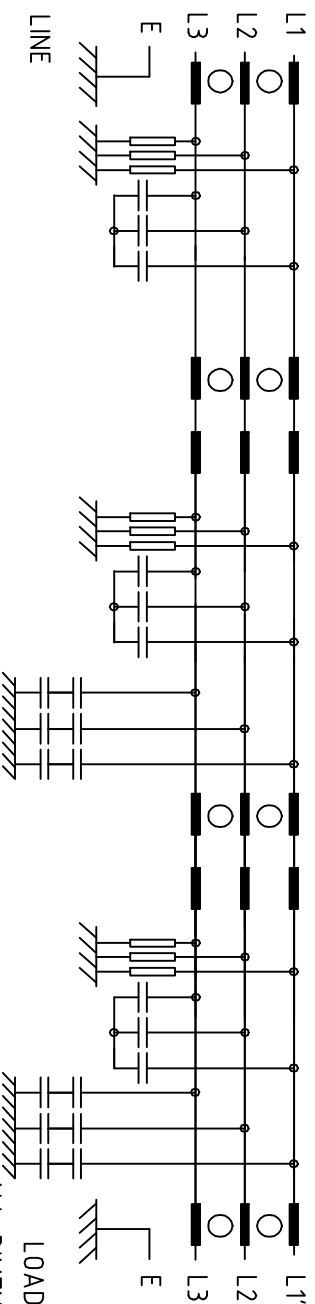
PERFORATED ALUMINIUM BODY FOR AIR COOLING,  
 ALUMINIUM BASE WITH CAPACITOR NETWORKS  
 PCB MOUNTED, CHOKES AIR COOLED FIXED TO  
 BASE PLATE, INSULATING TERMINAL BOOTS  
 SUPPLIED WITH FILTER.

ALL DIMENSIONS IN MM / ANGLES IN DECIMAL DEGREES



FILTER MEASURED AT 1KHZ

TOTAL L = 294uH, X CAP = 3.64uF, Y CAP = 1.7uF, RES = 666k Ohm



DrgnNo MIF3100-GS

TITLE THREE PHASE 500V 100A MAINS FILTER

**ROXBURGH EMC**



GENERAL SPECIFICATION  
 FOR MIF3100

CUSTOMER  
 FILTER REF

Sheet ? of 1 Aprvd Date 24/10/00 Aprvd By SW Drwn by BFS SCALE NTS CNN--- Location N:\DWG\GS\GS

©DELTRON EMCON LTD, ROXBURGH HOUSE, FOXHILLS INDUSTRIAL PARK, SCUNTHORPE, NORTH LINCOLNSHIRE, DN15 8QJ TEL +44 1724 281770 F +44 1724 270230