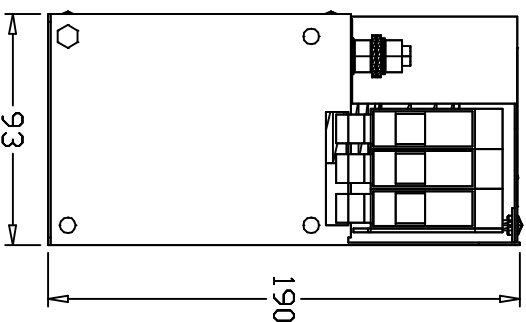
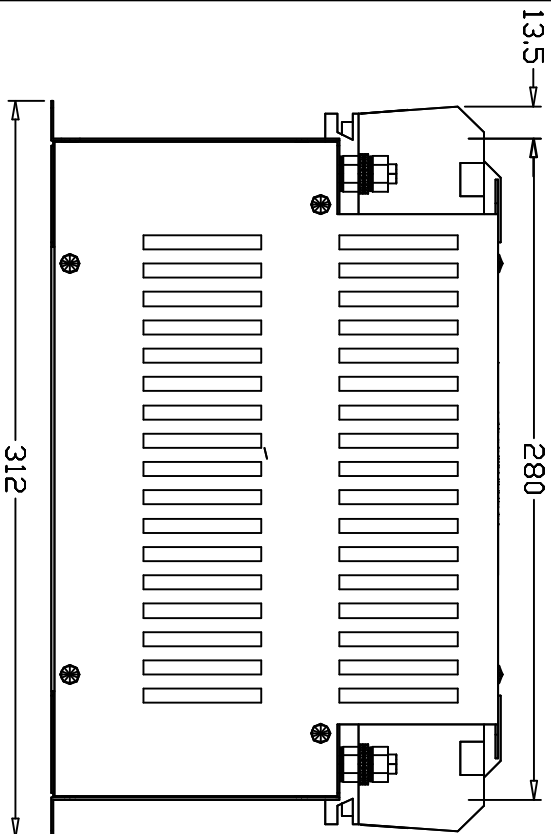
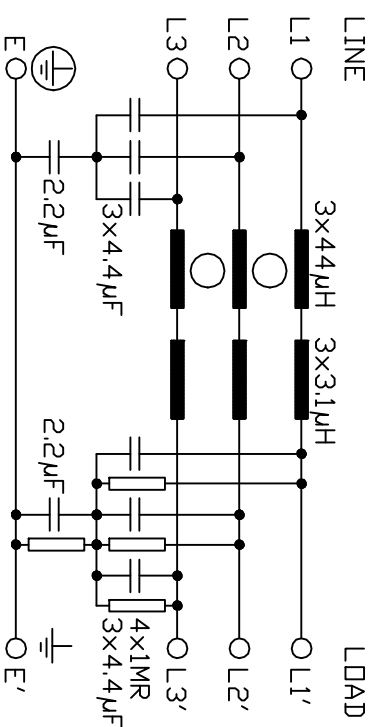
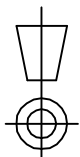


SPECIFICATIONS

VOLTAGE 500V_{ac}
 FREQUENCY 50/60Hz
 CURRENT 100A @ 40°C
 TEMPERATURE -25 TO 100°C
 LEAKAGE CURRENT 198mA @ 500V 50Hz
 HUMIDITY 90% RH (NON-CONDENSING)
 VIBRATION 10-200Hz 1.8G
 SURGE 4000Vpk 1.2/50µs
 ELECTRIC STRENGTH 2250V_{ac}/1min.
 POWER DISSIPATION 18W
 MASS 4.5kg
 TERMINALS 50sqmm TERMINAL BLOCK
 EARTH TERMINALS M8 STUD
 FLANGE MOUNTING 4x M6



ALL DIMENSIONS IN MM / ANGLES IN DECIMAL DEGREES



STANDARD FILTER

ROXBURGH ELECTRONICS LTD

TITLE 3 PHASE 100A 500V INDUSTRIAL FILTER

DrgNo
KMF3100-GS

ISSUE
1

GENERAL SPECIFICATION
 FOR KMF3100

CUSTOMER
 REFERENCE

Sheet 1 of 1 Aprvd Date 03/08/98 Aprvd By NL Drwn by AT SCALE CNN --- Location N:\DWG\GS\GS000051

© ROXBURGH ELECTRONICS LTD, FOXHILLS INDUSTRIAL PARK, SCUNTHORPE, NORTH LINCOLNSHIRE, DN15 8QJ TEL +44 1724 281770 F +44 1724 270230