

Isolating transformer for supply of medical rooms **TTML 4000/230**



Advantages

| |
|--|
| Safe galvanic isolation |
| PTC resistor built into every coil to set up an external monitoring unit for protection against overload |
| Very good switch-on behaviour thanks to reduced starting currents |
| Very high efficiency |
| Very low short circuit voltage |
| Very low idle current |
| Very good corrosion protection and low noise thanks to BLOCKIMPEX vacuum impregnation |
| Contact protected screw connection terminals complying with UVV BGV A3 |
| Low height |
| Low leakage current |

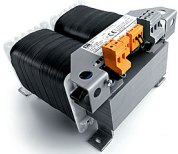
Applications

Isolating transformer for supply of medical rooms of the User group 2.

Standards

Isolating transformer for supply of medical rooms
to: VDE 0570 Part 2-15, VDE 0100 Part 710, DIN EN 61558-2-15,
EN 61558-2-15

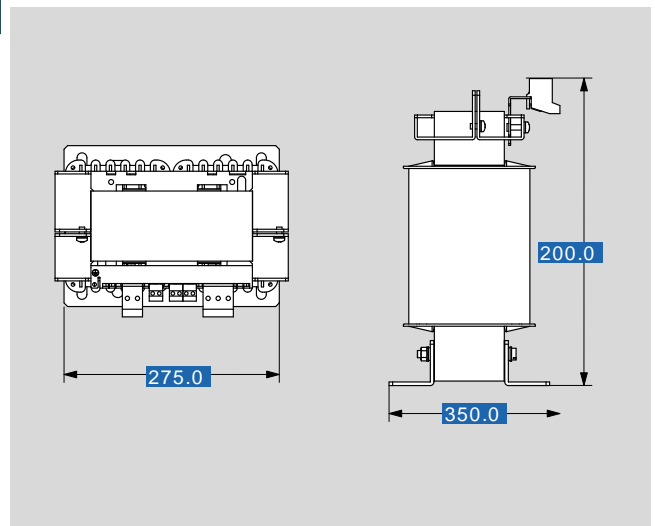
Approvals



Isolating transformer for supply of medical rooms TTML 4000/230

| Type | | TTML 4000/230 |
|----------------------------|-------------------------|--------------------------|
| Electrical data | Input | |
| | Rated input voltage | 230 Vac |
| | Low-inrush current | $\leq 12 \times I_{Nom}$ |
| | Rated frequency | 50 - 60 Hz |
| | Output | |
| | Rated output voltage | 115 and 230 Vac |
| | Rated Power | 4000 VA |
| | Short circuit voltage | $\leq 3 \%$ |
| | No-load current | $\leq 3 \%$ |
| | Efficiency | 97 % |
| Environment | | |
| Ambient temperature max. | 40 °C | |
| Safety and protection | | |
| Type | open type | |
| Class of Insulation System | B | |
| Protection index | IP 00 | |
| Safety class (prepared) | II | |
| Short circuit strength | non-short-circuit proof | |
| Test voltage | 3.75 kVac | |
| Order numbers | | |
| Order Number | TTML 4000/230 | |

| Type | | TTML 4000/230 |
|-----------------|--------------------------------|--|
| Mechanical data | Terminal and mounting | |
| | Terminals | Screw-type terminal 10 mm ² , Screw-type terminal 4 mm ² |
| | Fixing method Fixing screws | Fixing rail M8 |
| | Measures and weights | |
| | Weight | 55.00 kg |



Subjects to change.