



PRODUCT DATASHEET

Lena series

last update 13/8/2014

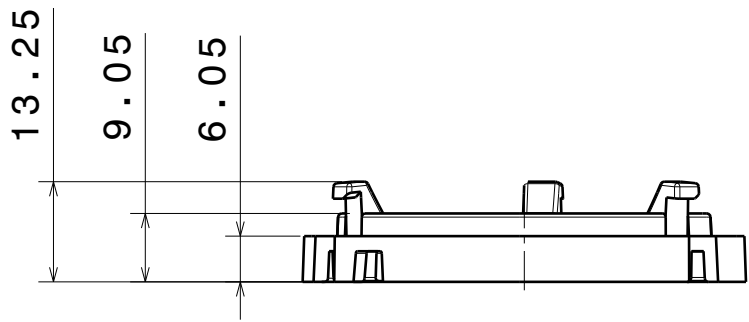
DETAILS

Product Number	C11995_LENA-STD-BASE-CL340
Family	Lena
Type	Base part
Color	white
Diameter	58.63 mm
Height	13.25 mm
Style	round
Optic Material	
Holder Material	PC
Fastening	screw
Status	ready
ROHS Compliant	Yes
Date Updated	13/08/2014

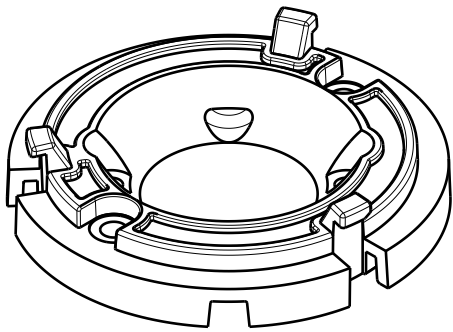


OPTICAL PROPERTIES

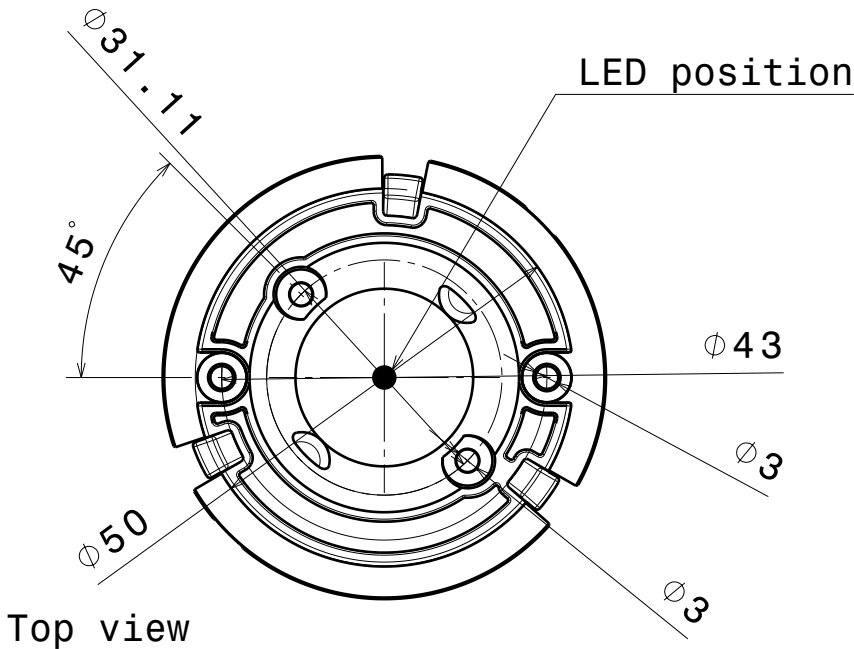
LED	Viewing Angle	Light Beam	Efficiency	cd/lm	connector
CL-L340	N/A degrees		-	(simulated) 0.000	-



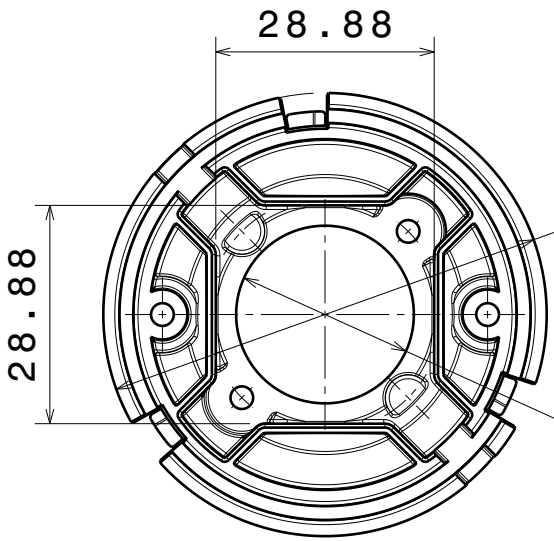
Front view



Isometric view

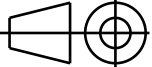


Top view



Bottom view

INDEX	PAR
1	C119

Tolerances if not otherwise shown According to DIN ISO 2768-1 Linear measures: class M According to DIN ISO 2768-2 Form and position: class L		LED
THIRD ANGLE PROJECTION: 		DRAW
This drawing is the property of LEDiL Oy. It may not be reproduced, copied or communicated without a written agreement with LEDiL Oy.		SIZE A3
		SCALE

NOTE: The typical divergence will be changed by different color, chip size and chip position tolerance. The typical total divergence is the full angle measured where the luminous intensity is half of the peak value.