

## DETAILS

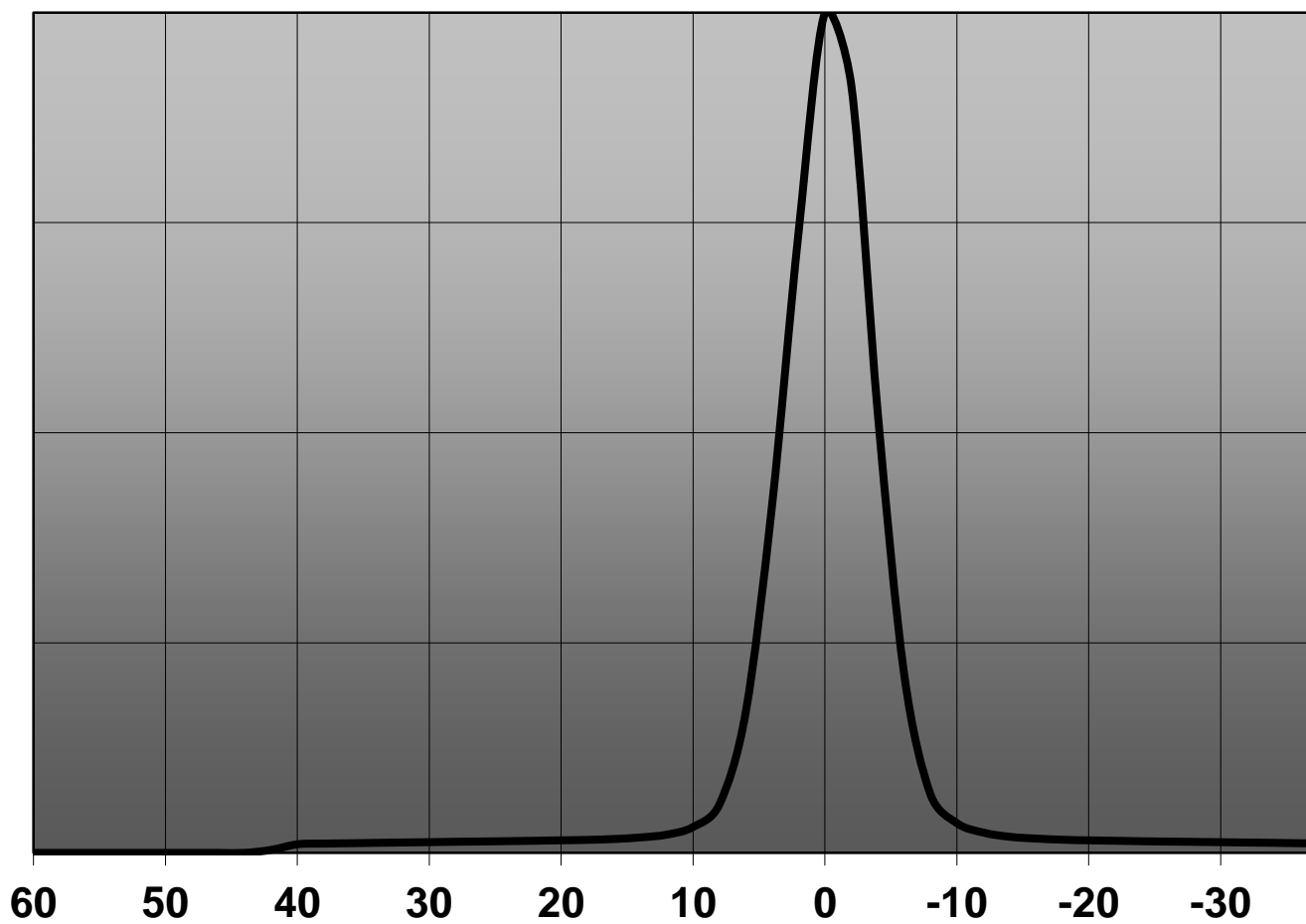
<b>Product Number</b>	C12480_MIRELLA-50-S-PIN
<b>Family</b>	Mirella
<b>Type</b>	Reflector
<b>Color</b>	metal
<b>Diameter</b>	49,9 mm
<b>Height</b>	23,9 mm
<b>Style</b>	round
<b>Optic Material</b>	PC
<b>Holder Material</b>	
<b>Fastening</b>	pin
<b>Status</b>	ready
<b>ROHS Compliant</b>	Yes
<b>Date Updated</b>	1/09/2014



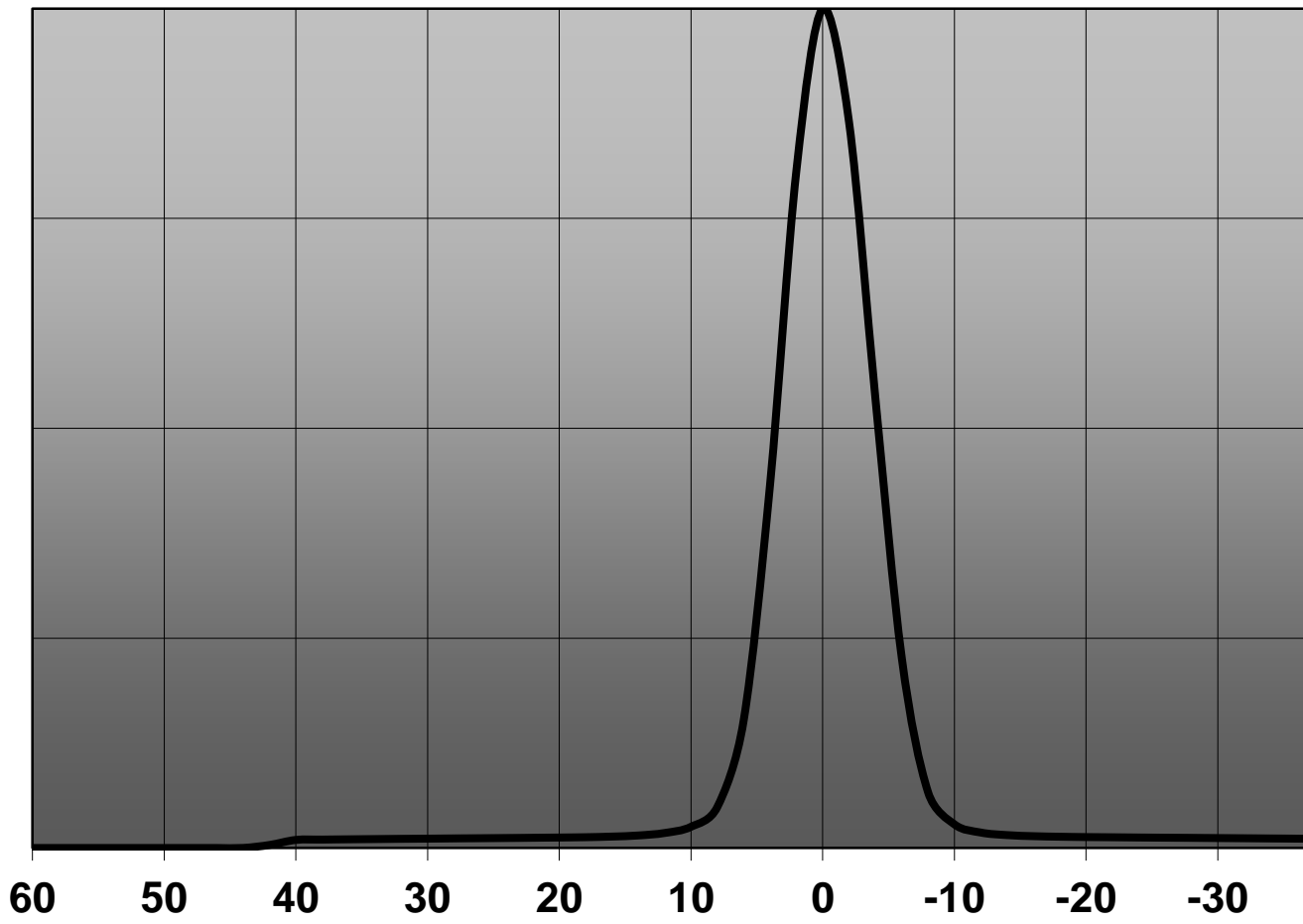
## OPTICAL PROPERTIES

LED	Viewing Angle	Light Beam	Efficiency	cd/lm	connector
XT-E	7.6 degrees		89 %	23.980	-
XP-G2	7.9 degrees		91 %	25.060	-
Oslon Square EC	8.0 degrees		90 %	23.550	-
XP-G	8.1 degrees		91 %	24.980	-
XM-L2	8.6 degrees		91 %	18.940	-
XM-L	8.7 degrees		90 %	19.340	-
LUXEON MZ	8.7 degrees		90 %	19.280	-
LUXEON A	8.9 degrees		89 %	20.540	-
NS9x383	9.2 degrees		89 %	17.740	-
Duris S8	9.7 degrees		91 %	16.040	-
LUXEON M	12 degrees		91 %	10.310	-

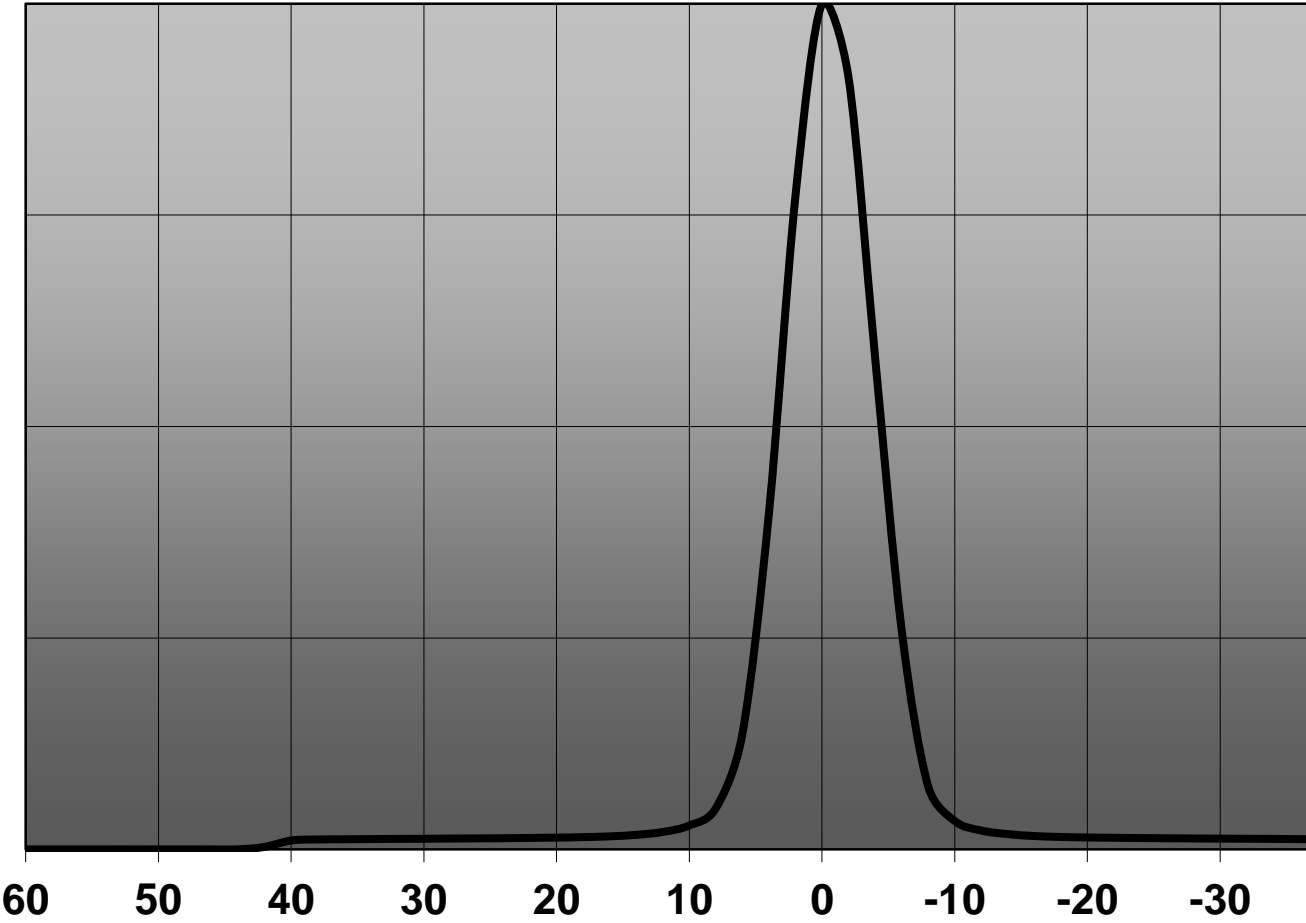
Relative intensity of C12480\_MIRELLA-50-S-PIN\_(XT



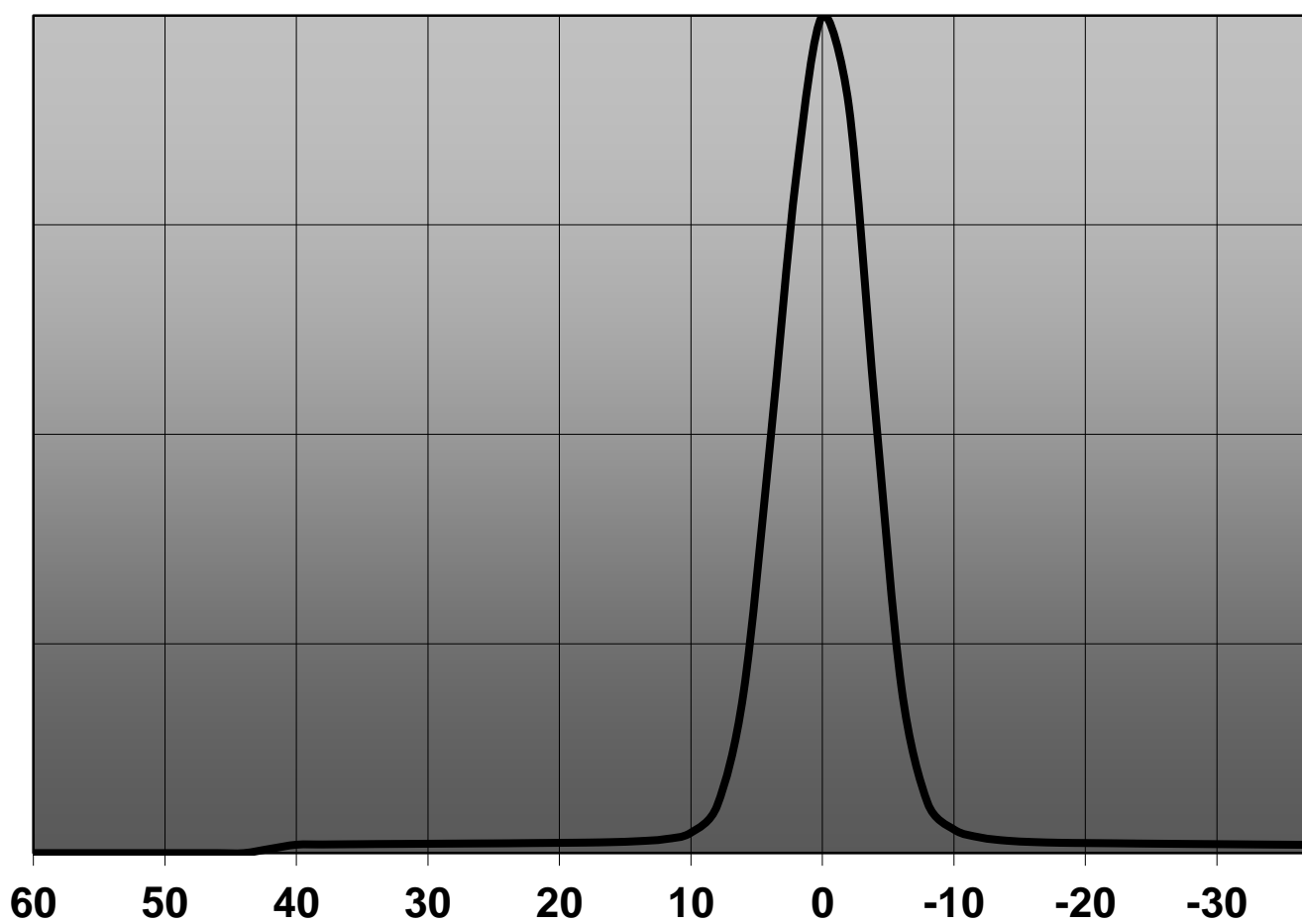
Relative intensity of C12480\_MIRELLA-50-S-PIN\_(XP-



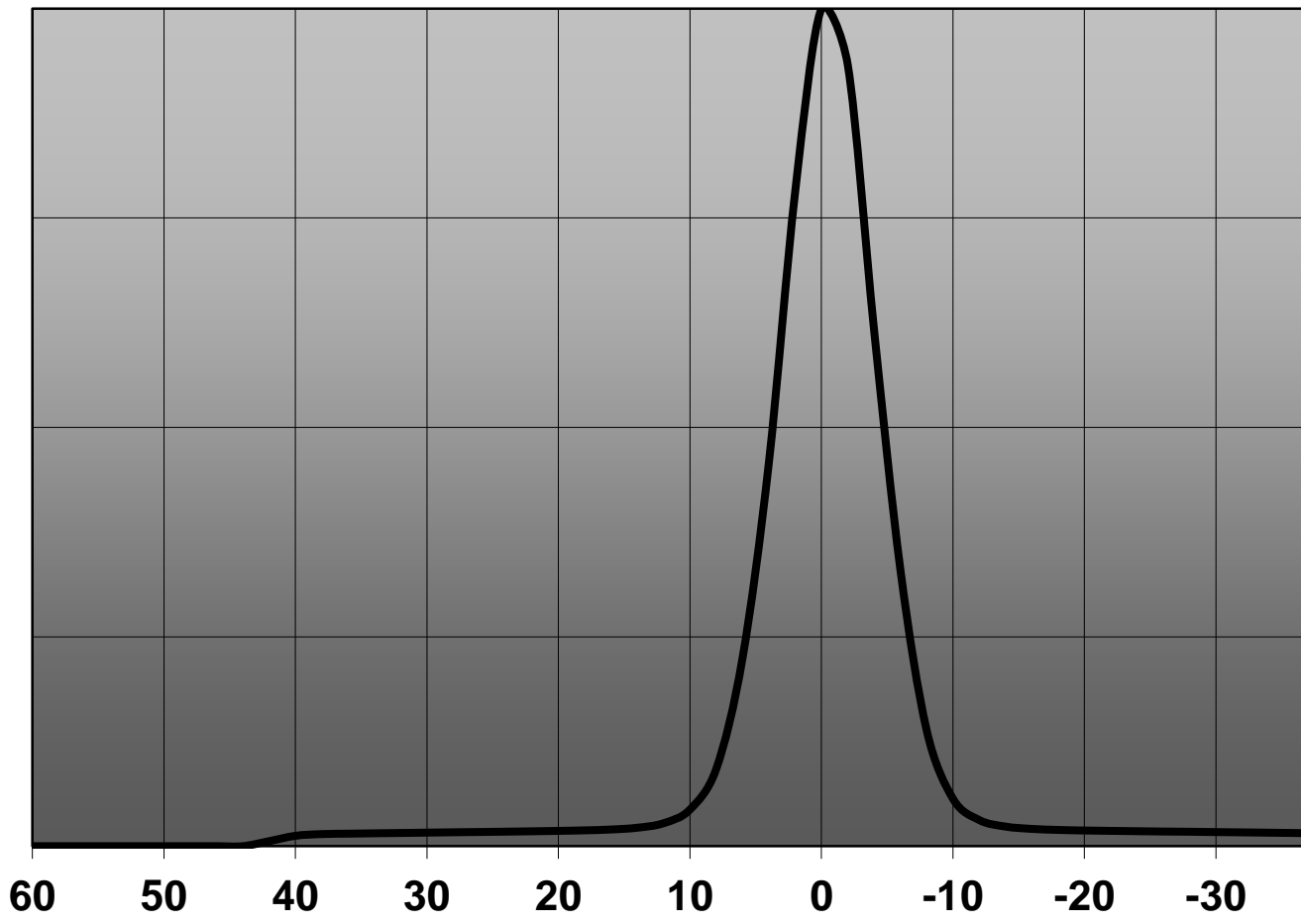
Relative intensity of C12480\_MIRELLA-50-S-PIN\_(Squa



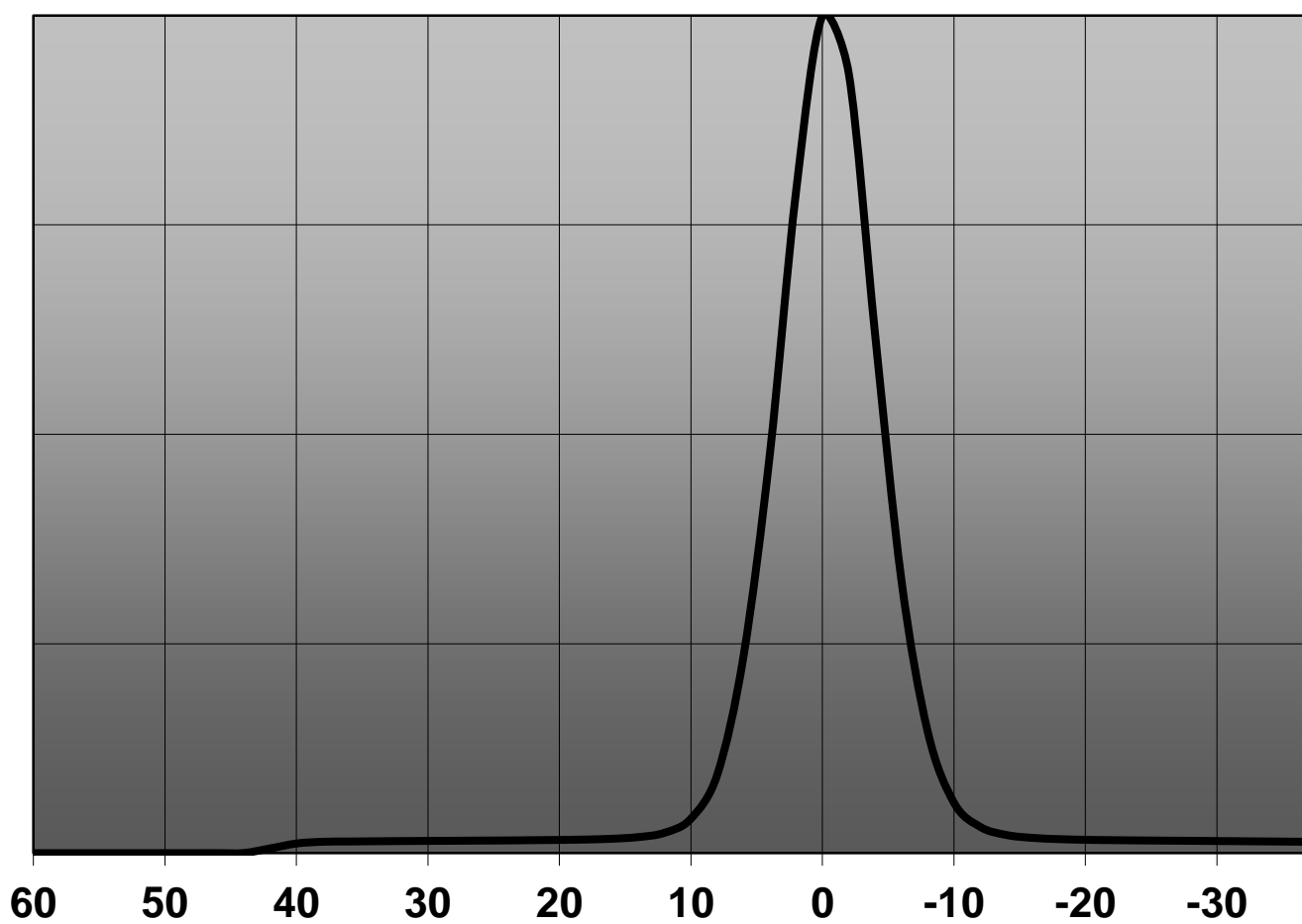
Relative intensity of C12480\_MIRELLA-50-S-PIN\_(XRF)



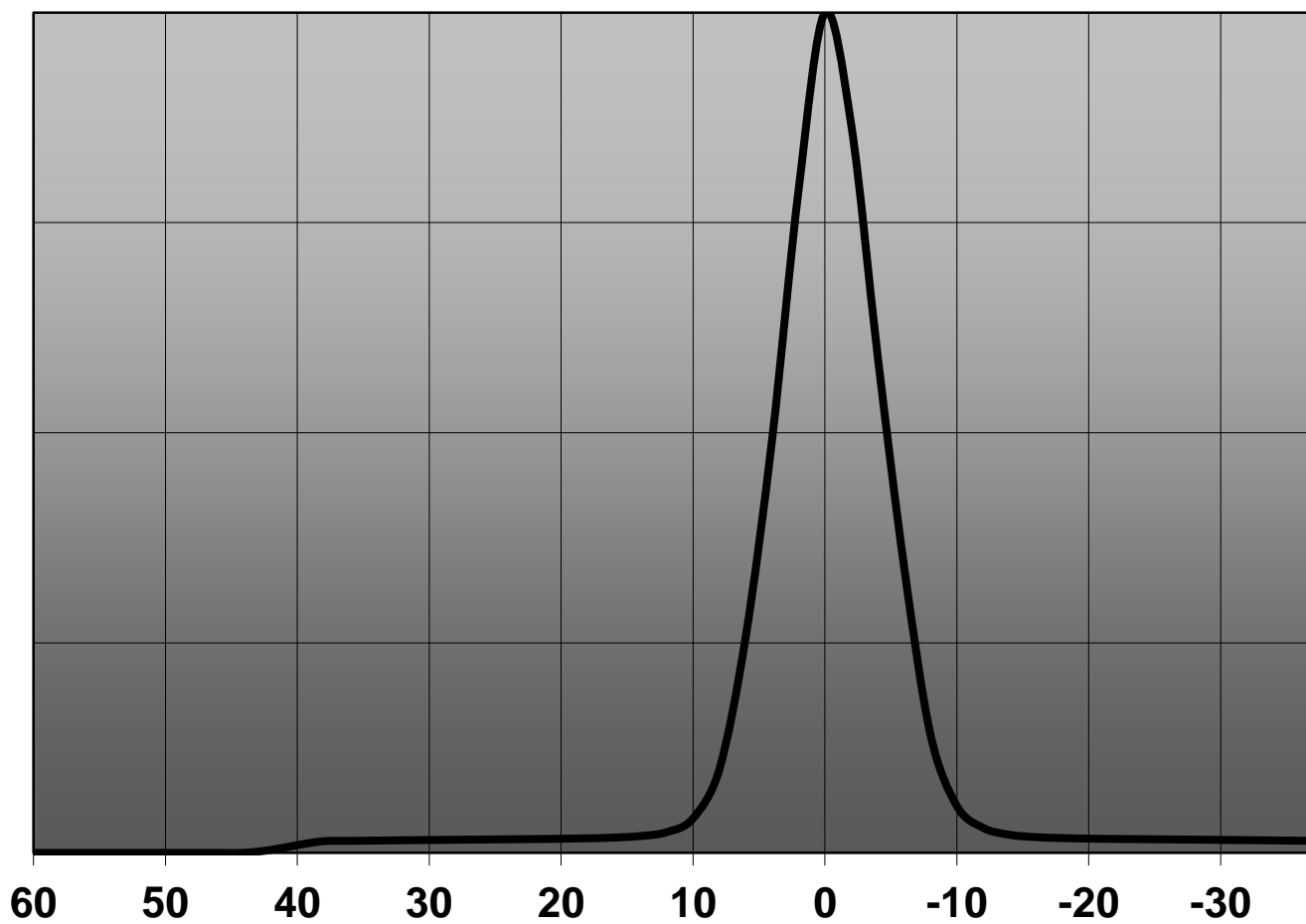
Relative intensity of C12480\_MIRELLA-50-S-PIN\_()



Relative intensity of C12480\_MIRELLA-50-S-PIN\_(XM

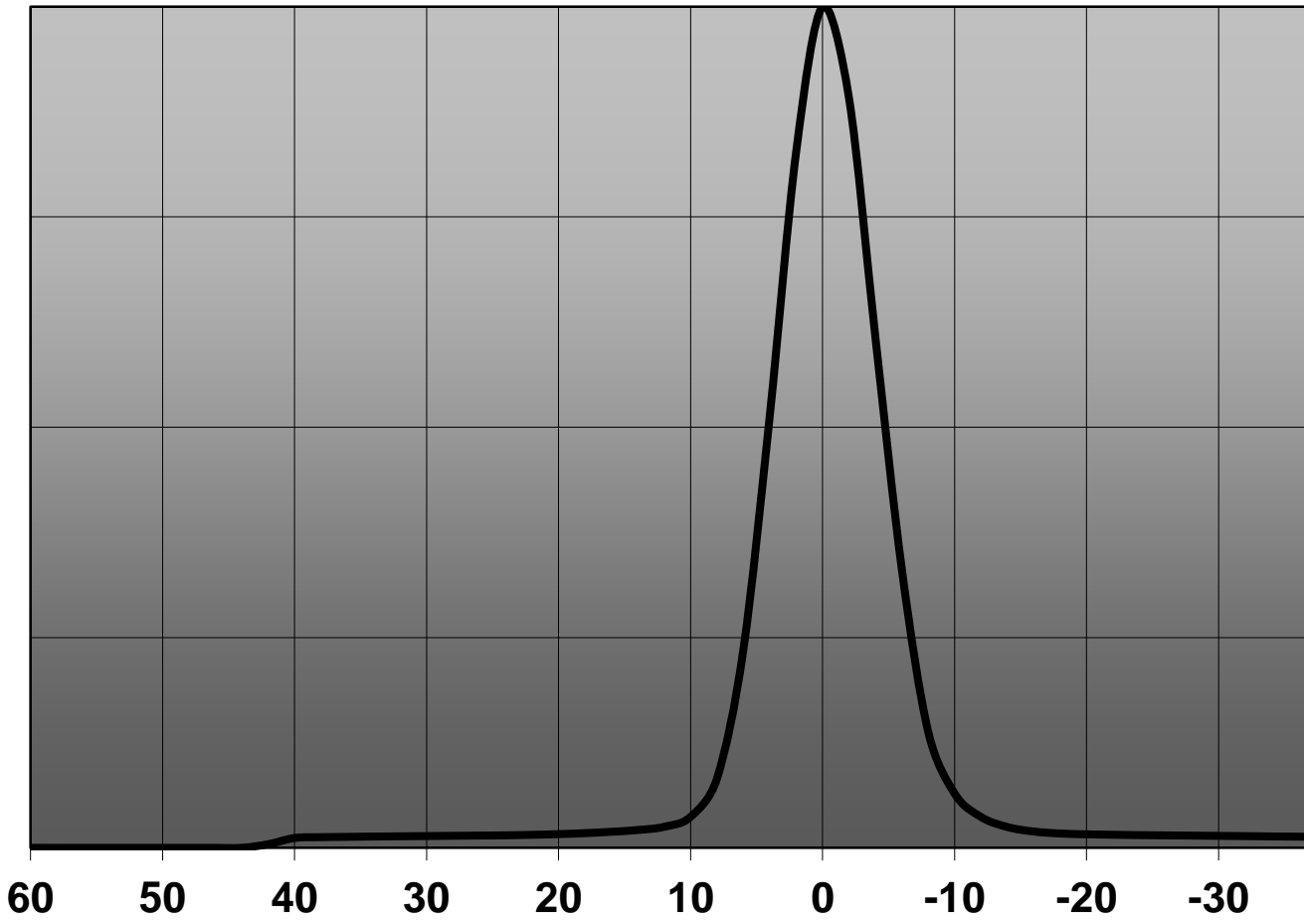


**Relative intensity of C12480\_MIRELLA-50-S-PIN\_(Luxeo**

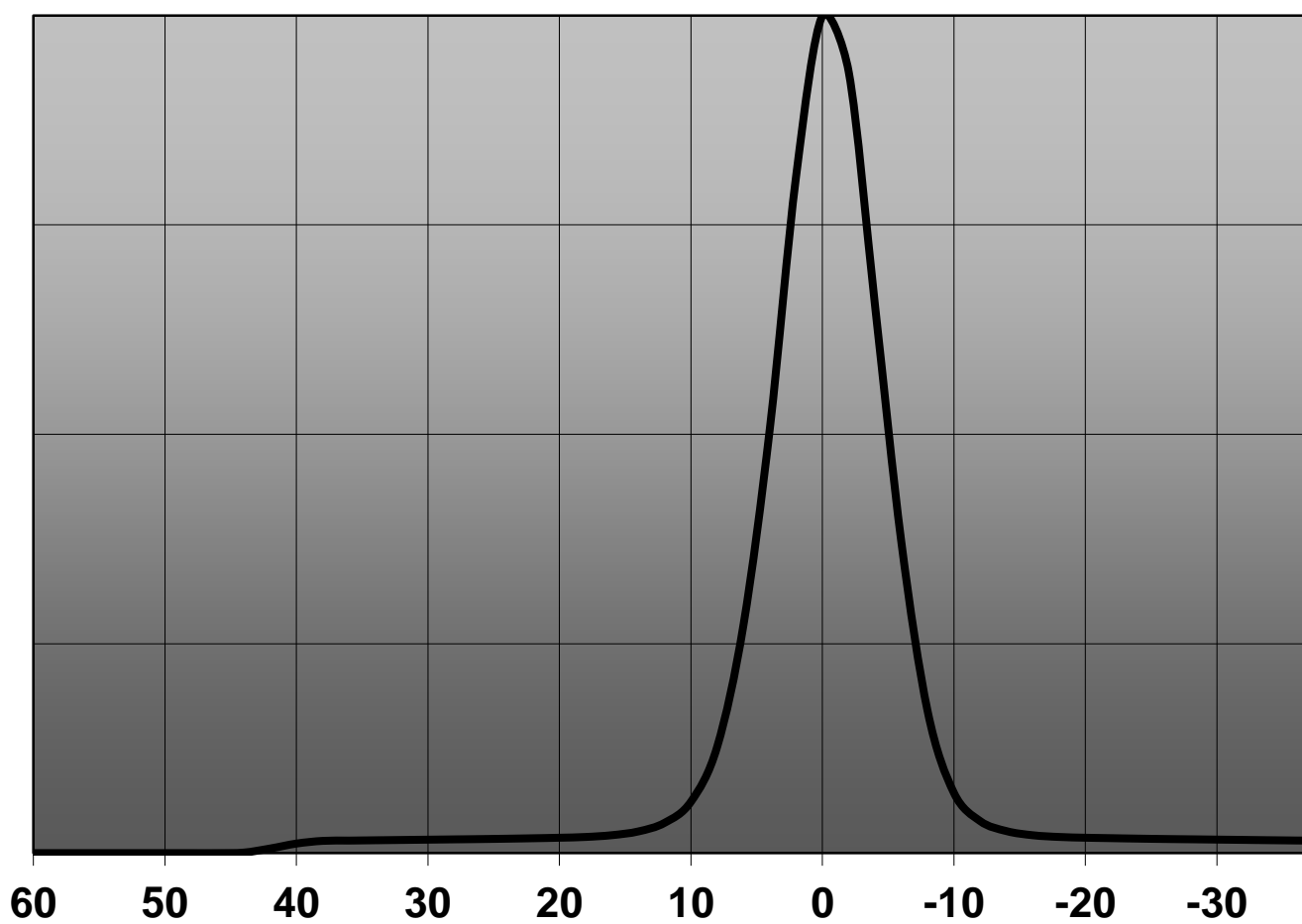




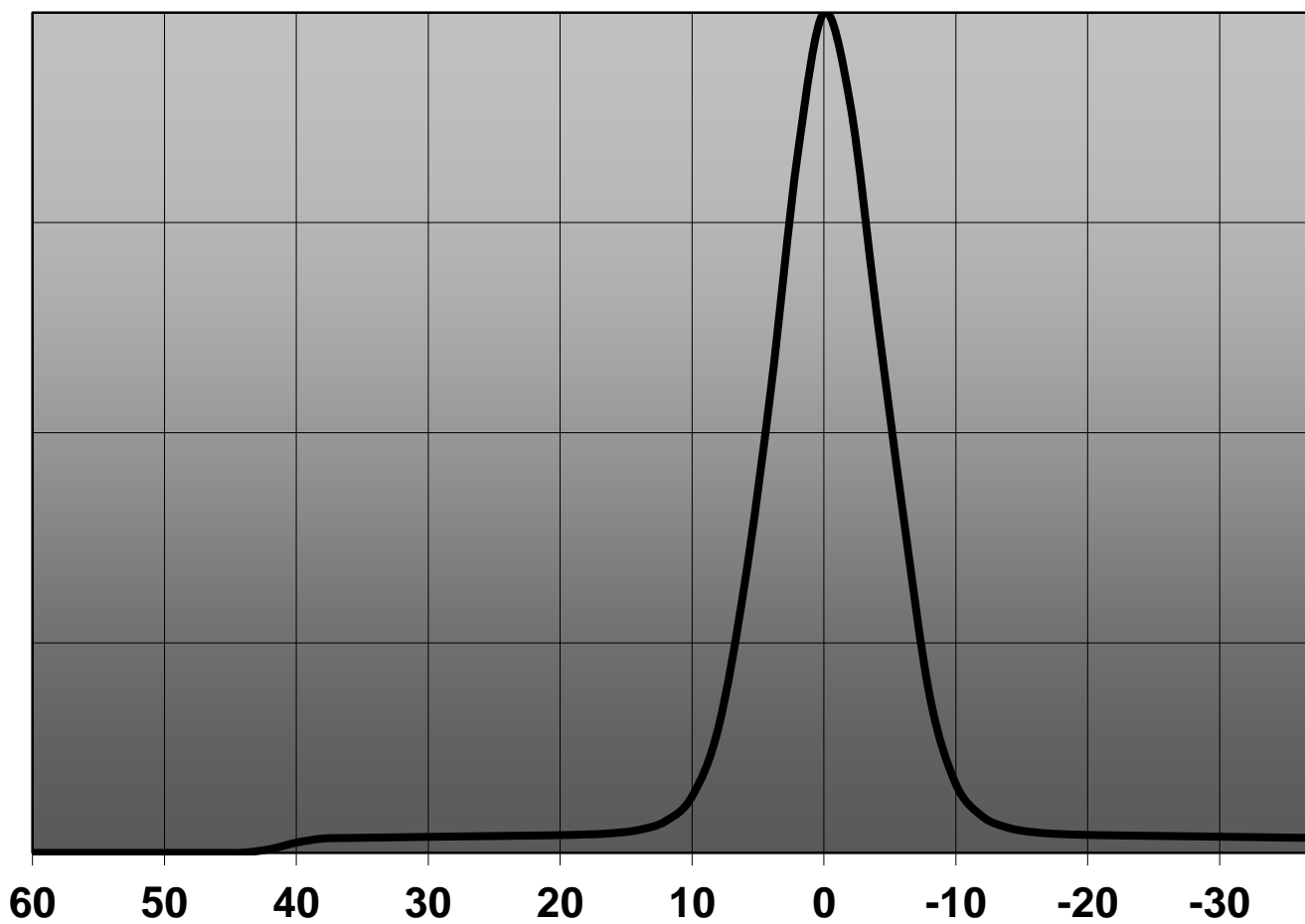
**Relative intensity of C12480\_MIRELLA-50-S-PIN\_(Lux**



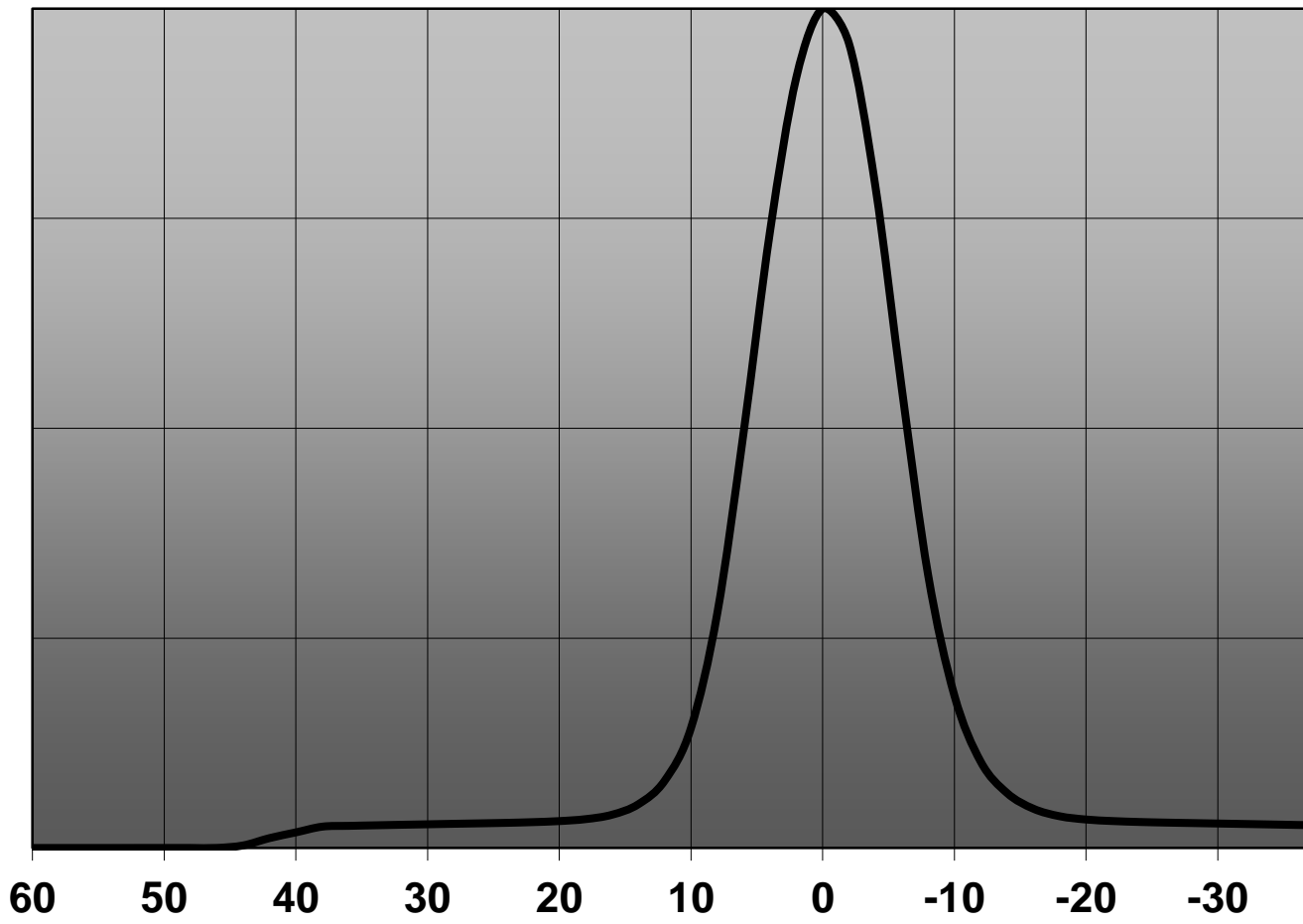
Relative intensity of C12480\_MIRELLA-50-S-PIN\_(NS9



Relative intensity of C12480\_MIRELLA-50-S-PIN\_(Duris



**Relative intensity of C12480\_MIRELLA-50-S-PIN\_(Lux**

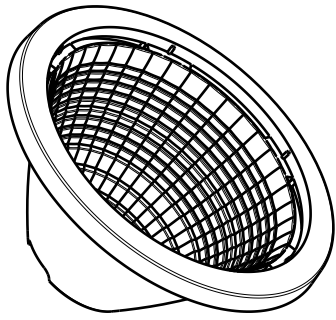


D

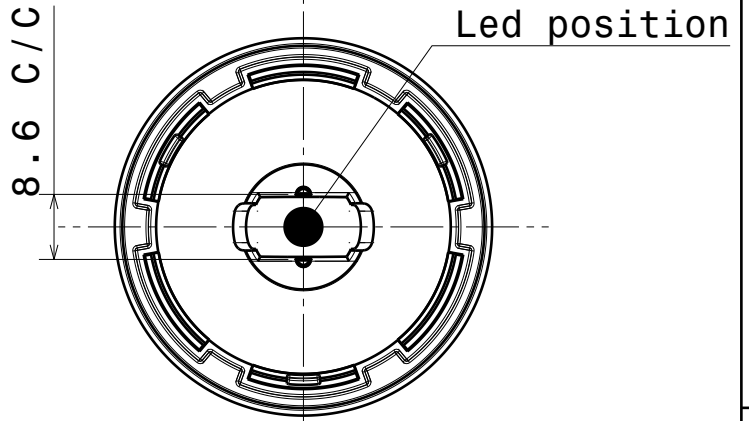
C

B

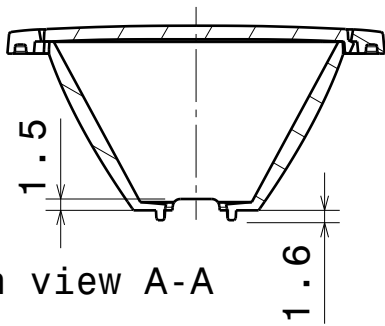
A



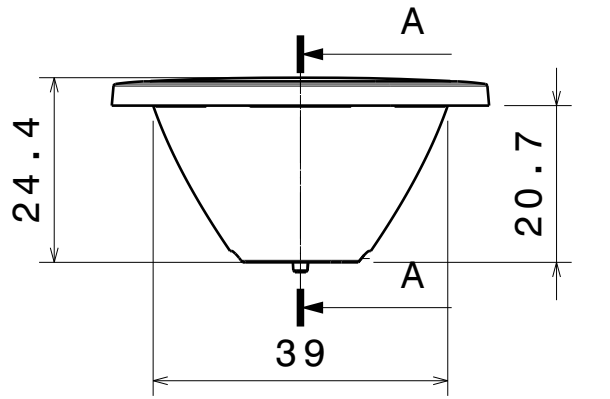
Isometric view



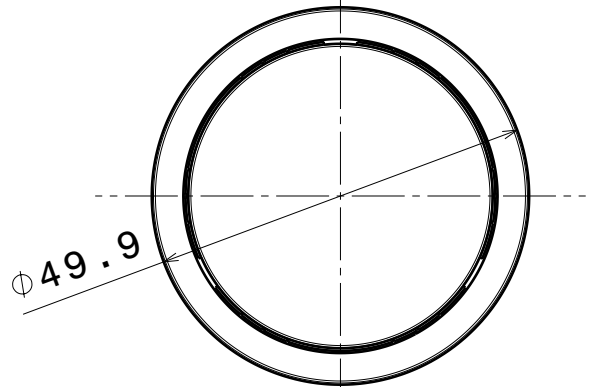
Bottom view



Section view A-A



Front view



Top view

4

4

3

3

2

2

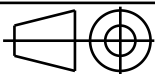
1

1

Tolerances if not otherwise shown  
 According to DIN ISO 2768-1  
 Linear measures:  
 Up to 30mm class F, otherwise class M.  
 According to DIN ISO 2768-2  
 Form and position: class K

**LEDiL** LediL Oy  
 Salorankatu 10  
 FIN 24240 SALO  
 Finland

THIRD ANGLE PROJECTION:



DRAWING TITLE

Datasheet\_Mirella\_pin

This drawing is the property  
 of LEDiL Oy. It may not be  
 reproduced, copied or  
 communicated without a written  
 agreement with LEDiL Oy."

SIZE	PART NUMBER
A4	-

SCALE	1:1	WEIGHT	-	SHEET	1/1
-------	-----	--------	---	-------	-----

D

A

**NOTE: The typical divergence will be changed by different color, chip size and chip position tolerance. The typical total divergence is the full angle measured where the luminous intensity is half of the peak value.**

#### **GENERAL INFORMATION**

- Product series especially designed & optimized for series of LEDs.
- Special care taken to make light distribution as uniform as possible.
- Reflector is made of aluminium coated PC (120 degrees of Celcius / 248 degrees of Fahrenheit) with protective lacquer (short term 100 degrees of Celcius / 212 degrees of Fahrenheit).