

Data Sheet

PT091xxVGBN

Page 1/5

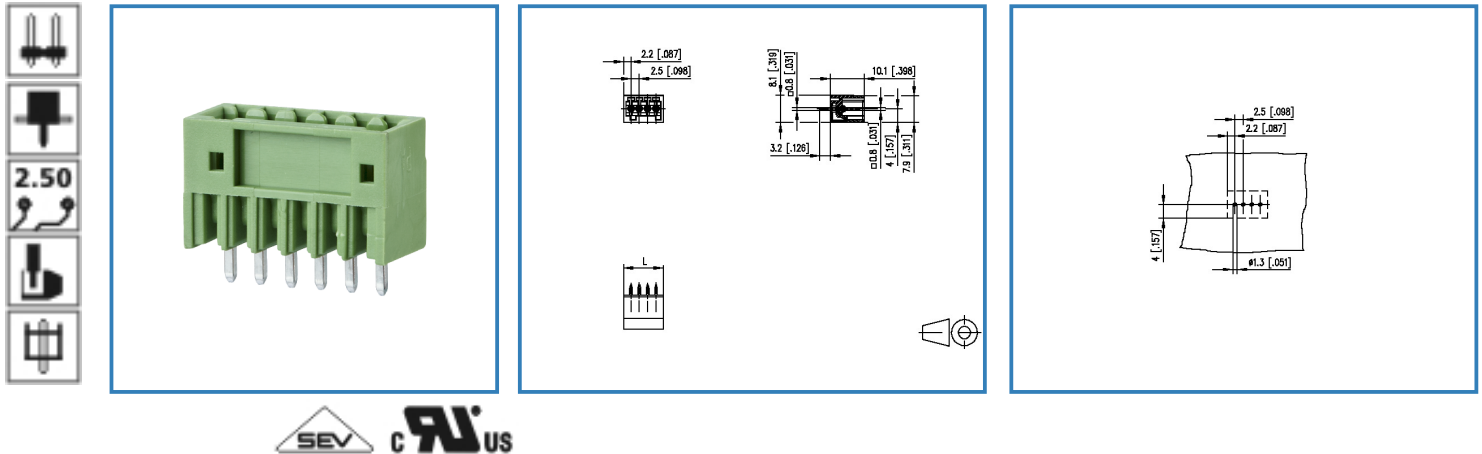
P/N

313731xx

xx=number of poles

2013/12/05

Illustration



see enlarged drawing at the end of the document

Product specification

- pin header, solderable
- centerline 2.50 mm, direction of connection vertical 0°
- closed ends
- color green
- Connection data

CRIUS V / A 150 / 5

SEV 6 A / 80 V / 2.5 kV / 3 / IEC 61984

Data Sheet

PT091xxVGBN

Page 2/5

P/N

313731xx

xx=number of poles



2013/12/05

Technical Data

General Data

Solder pin length	3.2 mm		
min. number of poles	2		
max. number of poles	12		
Insulating material class	CTI 600		
clearance/creepage dist.	1.7 mm		
protection category	IP 00		
Overvoltage category	III	III	II
Pollution degree	3	2	2
Rated voltage	80 V	320 V	320 V
Rated test voltage	2.5 kV	2.5 kV	2.5 kV

Connection data

 V / A	150 / 5
	6 A / 80 V / 2.5 kV / 3 / IEC 61984

Material

insulating material	PA66
flammability class	V0
contact pin material	CuFe
contact pin surface	Ni + Sn

Climatic properties

upper limit temperature	105 °C
lower limit temperature	-40 °C

General

solderability	For THR products acc. to IPC/JEDEC J-STD-020D-MSL 1 For THT products max. 260 °C / 10 s
Tolerance	ISO 2768 -mH

Data Sheet

PT091xxVGBN

Page 3/5

P/N

313731xx

xx=number of poles

2013/12/05

Matching Part to

P/N

Product name

ASP051

SP051xxVGNN ASP051



METZ CONNECT GmbH

Im Tal 2 | 78176 Blumberg | Germany | www.metz-connect.com

Phone +49 7702 533-0 | Fax +49 7702 533-433

Montageanleitung / Mounting instruction siehe / see www.metz-connect.com

Members of METZ CONNECT



Data Sheet

PT091xxVGBN

Page 4/5

P/N

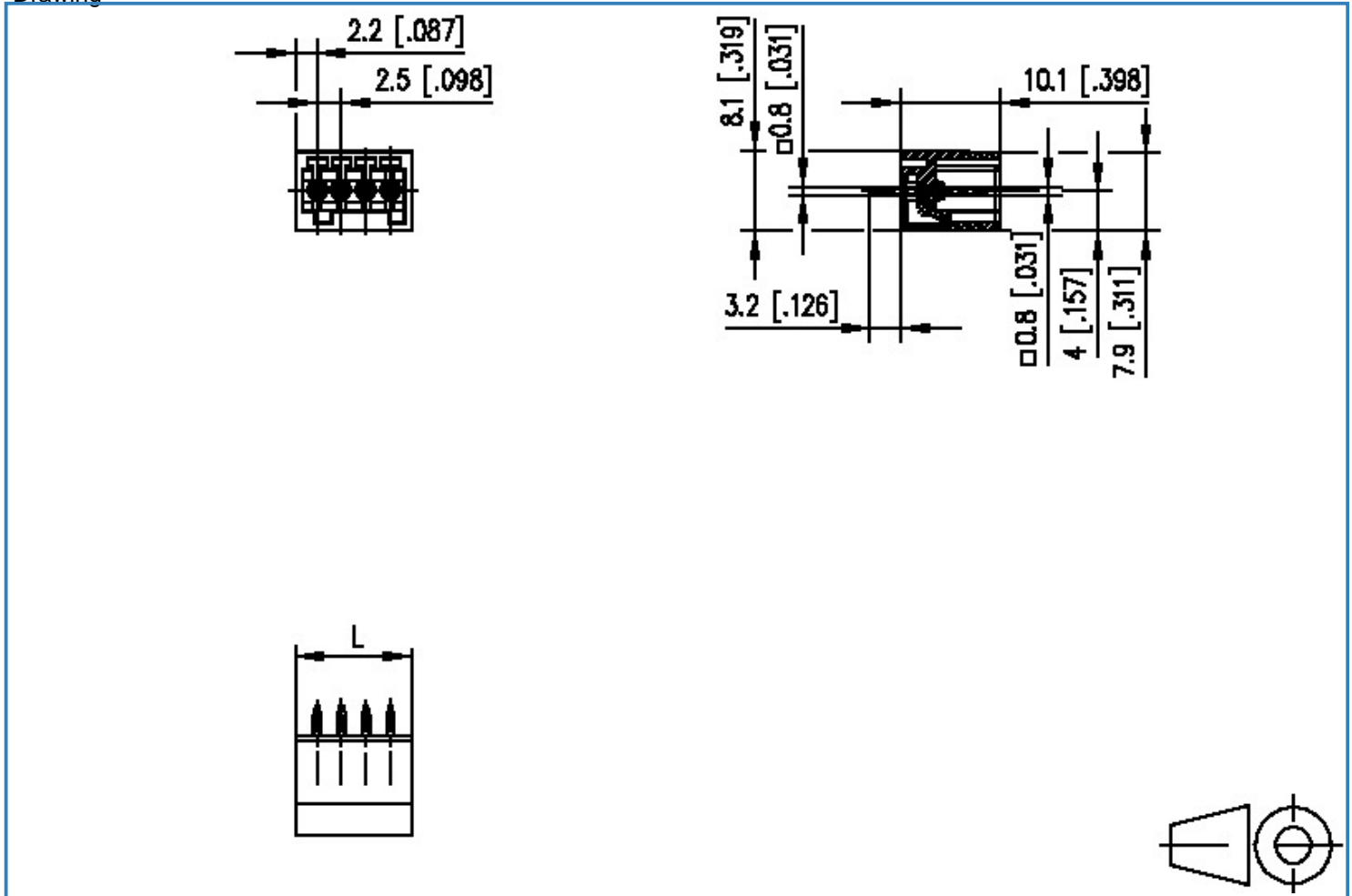
313731xx

xx=number of poles

2013/12/05

Illustration

Drawing



$L = (\text{pole size} - 1) \times \text{centerline} + 4.4 [0.173]$



Data Sheet

PT091xxVGBN

Page 5/5

P/N

313731xx

xx=number of poles

2013/12/05

PCB Layout

