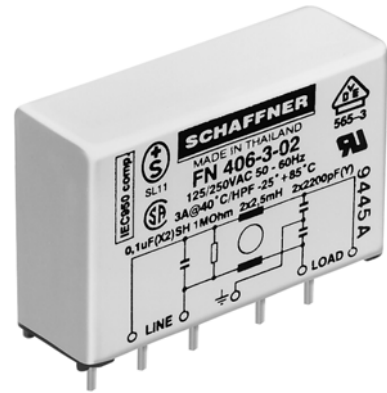


Ultra-compact EMC filter

FN 406

- 0.5-8.4A current ratings
- Aluminium case
- Very compact PCB-mounting design
- Low profile
- Nennströme von 0.5 bis 8.4A
- Aluminiumgehäuse
- Sehr kompaktes Printmontage-Design
- Raumsparender Aufbau
- Courants de service de 0.5 à 8.4A
- Boîtier en aluminium
- Conception très compact pour montage sur circuit imprimé
- Hauteur réduite



Filter selection table

Choose the family **FN xxx** with the required current rating and features, and add **/??** to determine input/output (line/load) connection style. Example: FN 406-6/02 is a 6A filter with pin connections.

Approvals



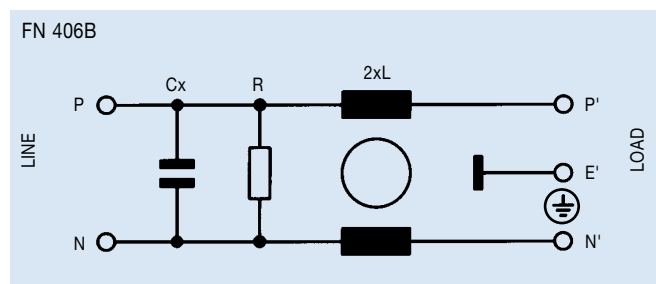
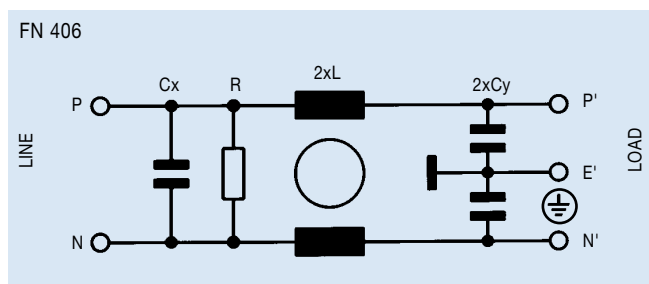
| Family | Connections | Current ratings A at 40°C (25°) | Inductance L mH | Housing | Weight g |
|-----------------|-------------|------------------------------------|-----------------------|---------|-------------|
| FN 406 -0.5 /?? | /02 | 0.5 (0.6) | 24 | A6 | 36 |
| FN 406 -1 /?? | /02 | 1 (1.2) | 12 | A6 | 36 |
| FN 406 -3 /?? | /02 | 3 (3.5) | 2.5 | A6 | 36 |
| FN 406 -6 /?? | /02 | 6 (6.9) | 0.78 | A6 | 36 |
| FN 406 -8.4 /?? | /02 | 8.4 (9.6) | 0.3 | A6 | 36 |

Additional specifications

| Filter type | Capacitance | | Res. R MΩ | Maximum leakage μA/phase | Maximum operating voltage | | Operating frequency Hz | Hipot test voltage | |
|-------------------|-------------|----------|-----------------|-----------------------------|---------------------------|-------|---------------------------|--------------------|------------|
| | Cx nF | Cy nF | | | VAC | Hz | | PN→E VAC | P→N VAC |
| Standard types | 100 | 2.2 | 1 | 190 | 250 | 50/60 | DC to 400 | 2000 | 760 |
| B types (medical) | 100 | | 1 | 2 | 250 | 50/60 | DC to 400 | 2500 | 760 |

MTBF at 40°C, 230V, per Mil-HB-217F: 1,900,000 hours.

Electrical schematics

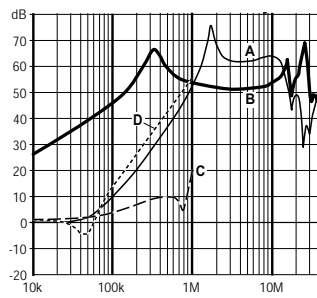


See tables for component values.

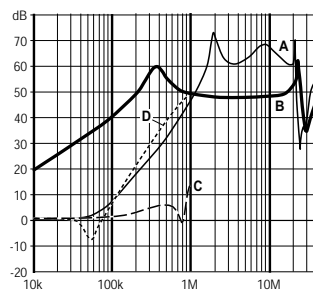
FN 406 insertion loss

Per CISPR 17; A = 50Ω/50Ω sym, B = 50Ω/50Ω asym, C = 0.1Ω/100Ω sym, D = 100Ω/0.1Ω sym

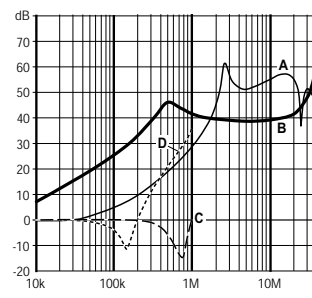
0.5 amp types



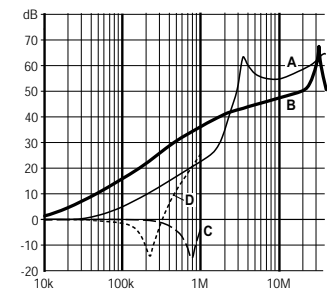
1 amp types



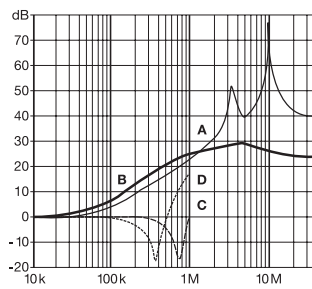
3 amp types



6 amp types



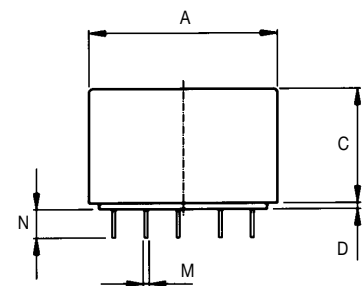
8.4 amp types



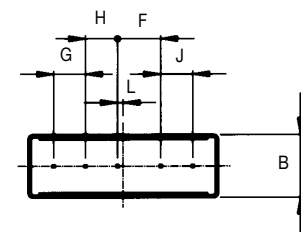
Mechanical data

| | | Tol. mm |
|----------|-------|------------|
| A | 45 | ± 0.2 |
| B | 15 | ± 0.5 |
| C | 28 | ± 0.3 |
| D | 1.5 | ± 0.3 |
| F | 10.16 | ± 0.1 |
| G | 7.62 | ± 0.1 |
| H | 7.62 | ± 0.1 |
| J | 7.62 | ± 0.1 |
| L | 1.27 | - |
| M | ∅0.8 | ± 0.1 |
| N | 7 | - |

Side view



Bottom view



All dimensions in mm; 1 inch = 25.4 mm