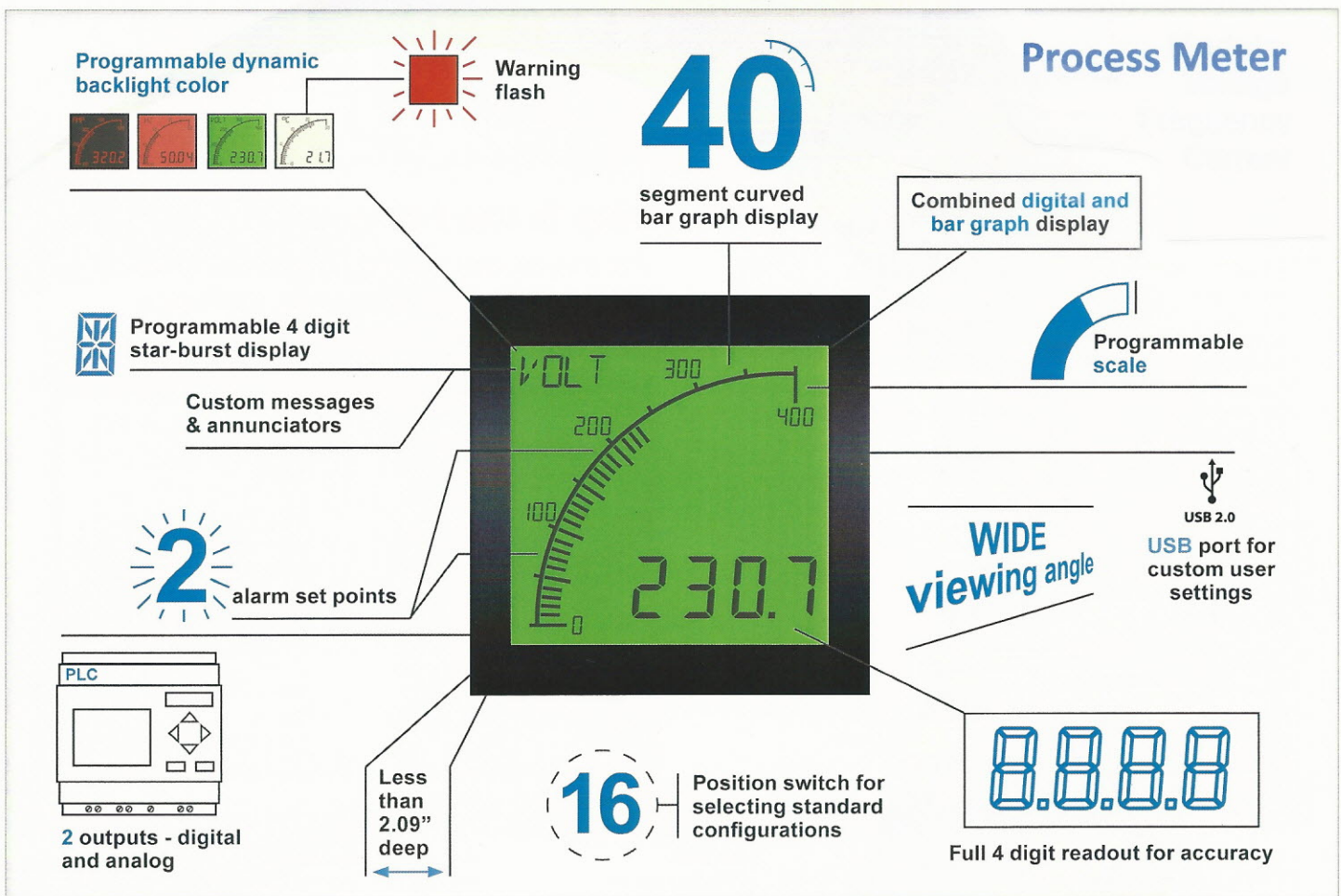


The Next Generation of Panel Meters

Easy to Use. Easy to Read.



Advanced Panel Meter (APM)



The latest innovative Advanced Panel Meter is now available from Trumeter!

The Trumeter APM is the most visible, easy to use, multi-format, programmable panel meter on the market. Providing you with the highest level of accuracy and an immediate visual indication of your critical parameters. The APM has been specifically designed for engineers requiring a more effective way of monitoring and displaying data. The Trumeter APM is a cost-effective alternative to the traditional moving coil and expensive digital panel meters. Trumeter - Revolutionizing the future of panel meters.

Go to www.truAPM.com for further information

Key Features

Large multi-format display that incorporates:

- 40 segment bar graph display
- Large 4 digit display
- Separate Starburst display area for annunciators, custom messages and alarm information
- Dynamic backlight color

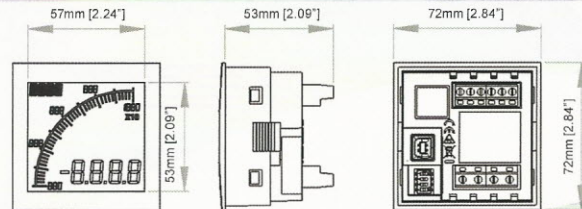
Programmable:

- Scale (offset and gain) and Range (min and max)
- Custom annunciators
- User selectable backlight color and intensity
- Two independent alarm set-points
- Two independent outputs (output models only)
- 4-20mA analog monitor output (output models only)

Visibility:

- User adjustable backlight brightness and color
- Large display
- Wide viewing angle (both horizontal and vertical)
- Custom annunciators

Dimensions:



Panel cutout: 68mm x 68mm [2.68" x 2.68"] as per DIN43700/IEC61554

MEASUREMENT

Voltage input Ranges	0 to 10VDC, 0 to +/-10VDC
Current Input Ranges	4 to 20ma, 10 to 50ma
Accuracy	0.1%

ENVIRONMENTAL

Temperature - operating	-10 to 60C
Temperature - storage	-40 to 70C
IP rating when installed with gasket	IP65

INPUT POWER REQUIREMENT

Nominal Input (AC or DC)	12 to 24
--------------------------	----------

DISPLAY

Number of digits (Process value)	4
Digit height	12mm (0.47")
Number of characters (Message display)	4
Character height	6mm (0.23")
Backlight colors	White, Red & Green
LCD display	Positive or Negative

OUTPUTS

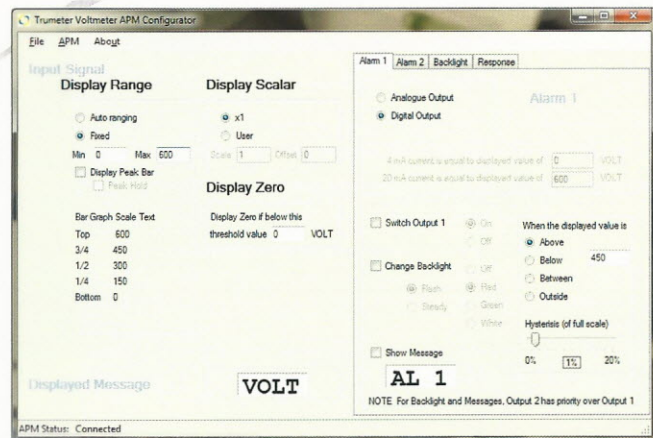
Voltage when set as digital output	24VDC Max
Current when set as digital output	50mA Max
When set as analog output	4 to 20mA

CERTIFICATION

UL and CUL (pending), CE

Easy To Use Software

Just plug into any USB port on your PC, run the freely available APM Configurator application and you're off. No drivers required.



Part Numbers: (POS LCD = Positive LCD; NEG LCD = Negative LCD)

PROCESS

APM-PROC-ANO
APM-PROC-APO

022128-01

DESCRIPTION

APM Process Meter with Negative LCD Display and Dual Outputs
APM Process Meter with Positive LCD Display and Dual Outputs

USB Programming Cable

Full specifications available online www.truAPM.com



Europe
Trumeter Technologies Ltd
Trumeter House
Europa Business Park
Bury, BL9 5BT
Tel: +44 161 705 4317
Email: sales.uk@trumeter.com

North America Office
Trumeter Company Inc. (USA)
702 S. Military Trail
Deerfield Beach, Florida
FL 33442, USA
Tel: +1 954 725 6699
Email: sales.usa@trumeter.com

Asia Pacific Distributor
Innovative Design Technologies Sdn. Bhd
Lot 5881, Lorong Iks Bukit Minyak 1
Taman Perindustrian Iks, 14000 Bukit Tengah
Penang, Malaysia
Web: www.idtworld.com
Tel: + 604 5015700
Email: info@idtworld.com